



Chipsmall Limited consists of a professional team with an average of over 10 year of expertise in the distribution of electronic components. Based in Hongkong, we have already established firm and mutual-benefit business relationships with customers from,Europe,America and south Asia,supplying obsolete and hard-to-find components to meet their specific needs.

With the principle of “Quality Parts,Customers Priority,Honest Operation,and Considerate Service”,our business mainly focus on the distribution of electronic components. Line cards we deal with include Microchip,ALPS,ROHM,Xilinx,Pulse,ON,Everlight and Freescale. Main products comprise IC,Modules,Potentiometer,IC Socket,Relay,Connector.Our parts cover such applications as commercial,industrial, and automotives areas.

We are looking forward to setting up business relationship with you and hope to provide you with the best service and solution. Let us make a better world for our industry!



Contact us

Tel: +86-755-8981 8866 Fax: +86-755-8427 6832

Email & Skype: info@chipsmall.com Web: www.chipsmall.com

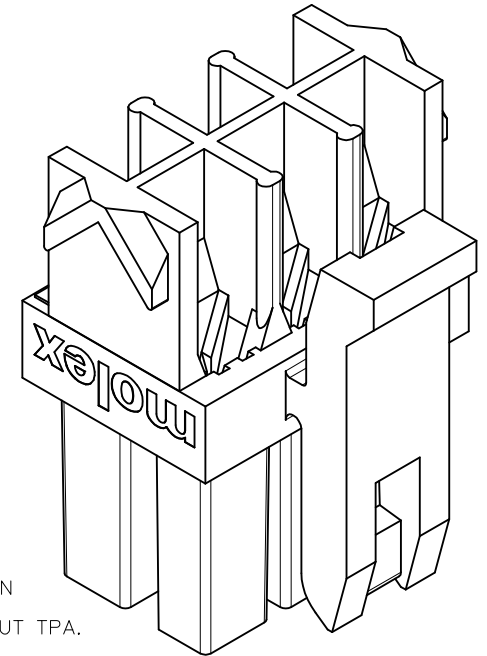
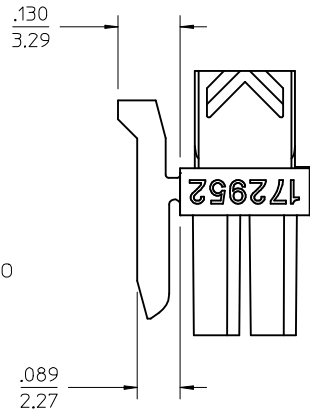
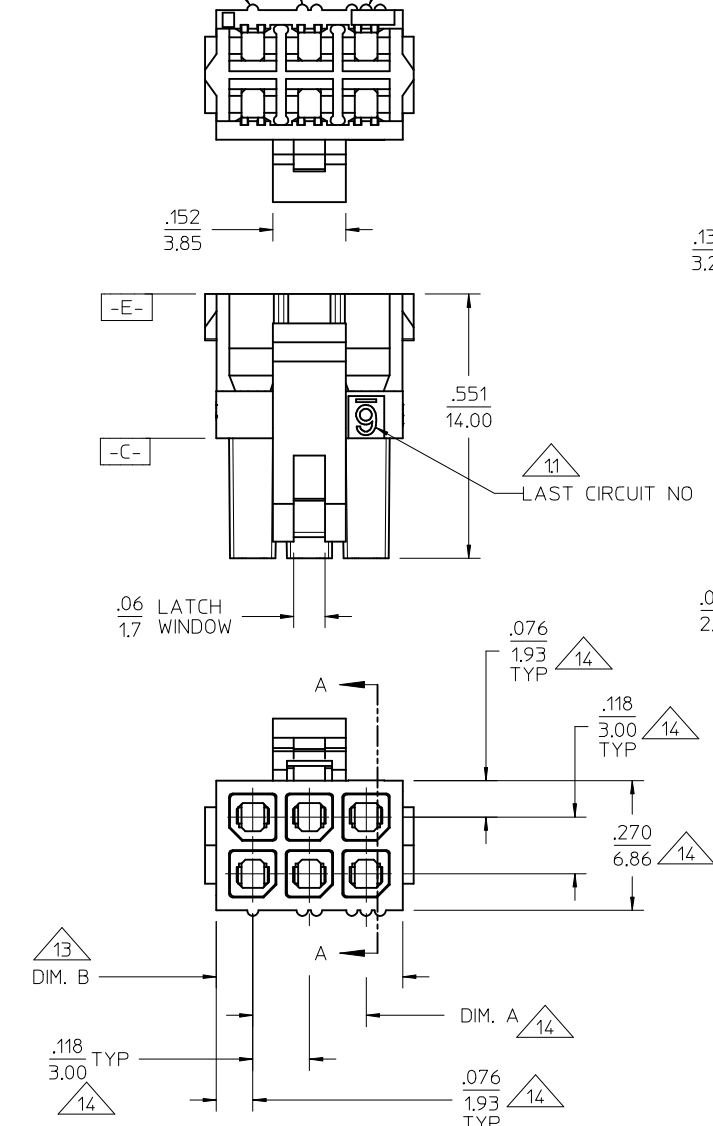
Address: A1208, Overseas Decoration Building, #122 Zhenhua RD., Futian, Shenzhen, China



NOTES:

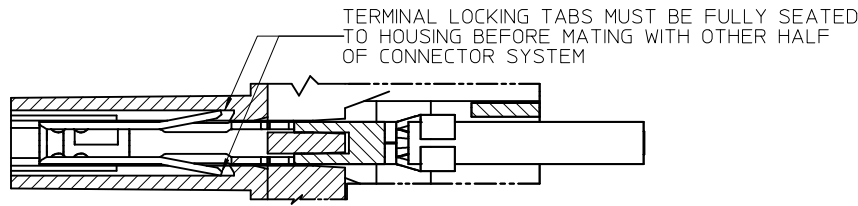
- 1) MATERIAL:
UNFILLED NYLON, RATED UL94V-0, LOW-HALOGEN, COLOR: BLACK
- 2) FINISH: NONE
- 3) PRODUCT SPECIFICATION: PS-43045
- 4) PACKAGING SPECIFICATION: BULK PER 1729520001-PK
- 5) MATES WITH: MOLEX 43020 PLUGS AND 43045 HEADERS
- 6) FOR USE WITH: 43030 AND 46235 (LOW FORCE) MOLEX FEMALE TERMINALS
- 7) HOUSING IS DESIGNED FOR USE WITH 172953-XX01 TPA. NEVER USE WITHOUT TPA.
- 8) THIS PART CONFORMS TO CLASS B REQUIREMENTS OF COSMETIC SPEC PS-45499-002
- 9) PARTS MAY HAVE A BLEMISH NEAR THE GATE THAT DOES NOT AFFECT FUNCTIONALITY
- 10) TERMINALS IN THE LOWER ROW ARE INSERTED 180° FROM THE UPPER ROW
SEE SECTION A-A FOR PROPER ORIENTATION
- 11) LAST CIRCUIT NUMBER OF THE CONNECTOR. NOT APPLICABLE TO 4 CIRCUIT.
- 12) REF SDES-43025-1000 FOR OVERMOLDING PARAMETERS
- 13) TO BE MEASURED APPROXIMATELY .060/1.52 FROM [-E-] SURFACE
- 14) TO BE MEASURED ON [-C-] SURFACE
- 15) MOLEX RECOMMENDS THE USE OF MICRO-FIT TEST PLUG SERIES 44242 FOR ALL TESTING. TEST PLUGS MUST NOT BE MATED OR UNMATED UNDER LOAD. DO NOT USE STANDARD MATING COMPONENTS FOR TEST PURPOSES.
- 16) TEXT ON PART IS FOR REFERENCE ONLY. TEXT AND TEXT LOCATION MAY VARY DEPENDING ON PART NUMBER AND/OR TOOL.

FIRST CIRCUIT INDICATOR RIB (1)
CIRCUIT 2 INDICATOR RIBS (2)
CIRCUIT 3 INDICATOR RIBS (3)

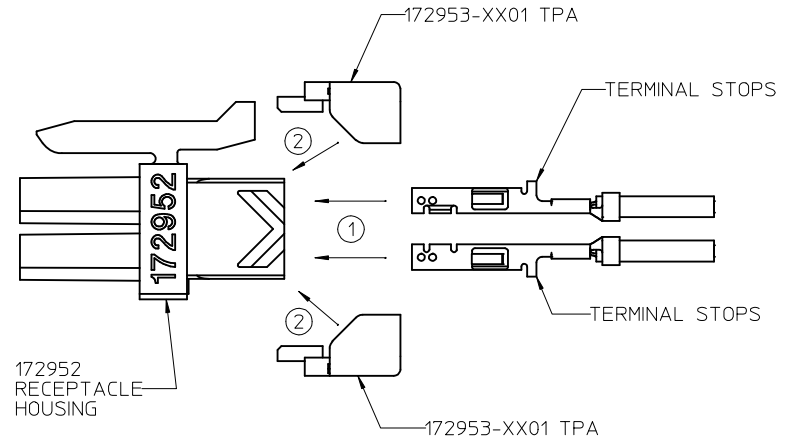
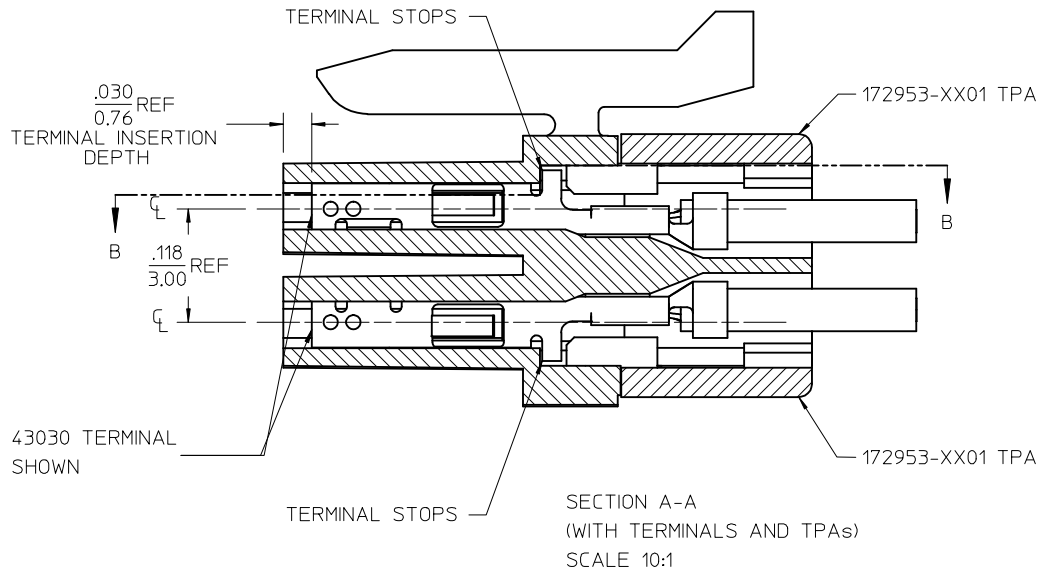


172952-0601 SHOWN
NEVER USE WITHOUT TPA.

ADD TOOLED COLUMN EC NO: UCP2017-1135 DRAWN: MOLE CHKD: APPR: BPI/SZCZOR REV: A3	DESCRIPTION 2016/11/16 2016/12/14	QUALITY SYMBOLS	GENERAL TOLERANCES (UNLESS SPECIFIED)	DIMENSION STYLE IN/MM	SCALE 5:1	DESIGN UNITS METRIC	THIRD ANGLE PROJECTION
		▽=0	mm INCH	DRAWN BY DATE BANDERSON 2014/12/30	TITLE MICRO-FIT TPA DUAL-ROW RECEPTACLE HOUSING		
		▽=0	4 PLACES ± --- ± ---	CHECKED BY DATE SSOUSEK 2014/12/30	molex		
		▽=0	3 PLACES ± .025 ± .010	APPROVED BY DATE BPI/SZCZOR 2016/03/24			
		2 PLACES ± 0.25 ± .015	MATERIAL NO.	DOCUMENT NO.	SHEET NO.		
		1 PLACE ± 0.38 ± ---	SEE CHART	SD-172952-001	1 OF 3		
		0 PLACE ± --- ± ---	ANGULAR ±1/2°	THIS DRAWING CONTAINS INFORMATION THAT IS PROPRIETARY TO MOLEX INCORPORATED AND SHOULD NOT BE USED WITHOUT WRITTEN PERMISSION			
DRAFT WHERE APPLICABLE MUST REMAIN WITHIN DIMENSIONS			SIZE C				



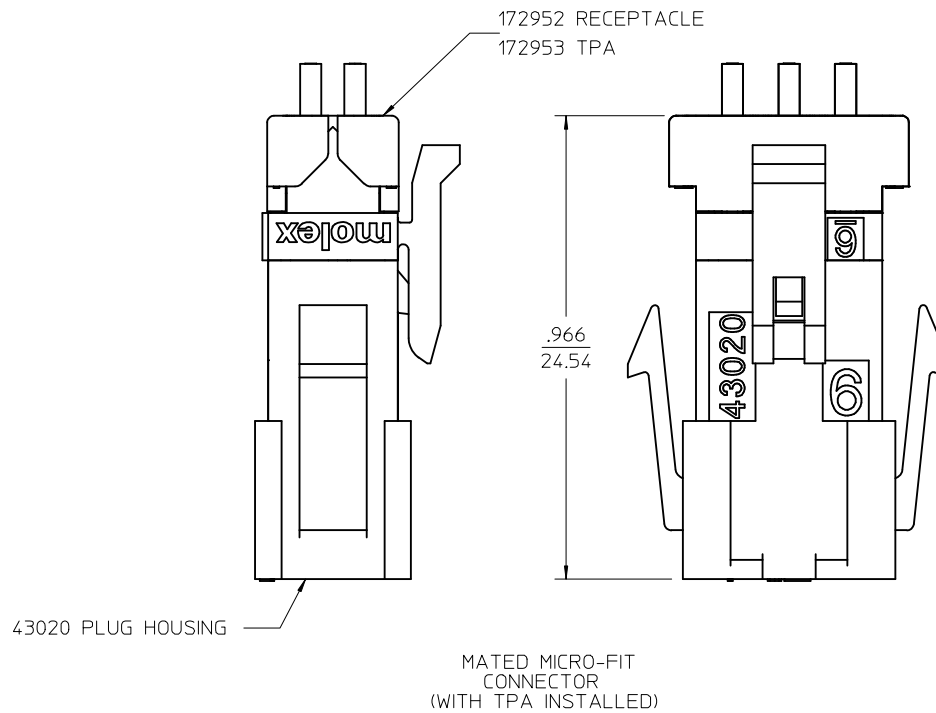
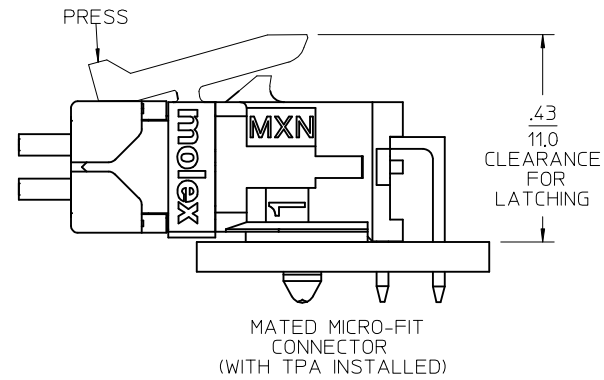
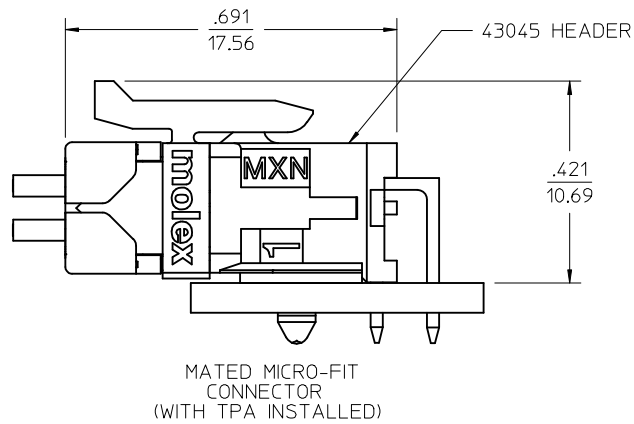
Partial B-B
SCALE 10:1



TERMINAL AND TPA
ORIENTATION
AND ASSEMBLY
NEVER USE WITHOUT TPA.

24	172952-2401	1,299 / 33.00	1,451 / 36.85	NO
22	172952-2201	1,181 / 30.00	1,333 / 33.85	NO
20	172952-2001	1,063 / 27.00	1,215 / 30.85	NO
18	172952-1801	.945 / 24.00	1,096 / 27.85	NO
16	172952-1601	.827 / 21.00	.978 / 24.85	NO
14	172952-1401	.709 / 18.00	.860 / 21.85	YES
12	172952-1201	.591 / 15.00	.742 / 18.85	YES
10	172952-1001	.472 / 12.00	.624 / 15.85	YES
8	172952-0801	.354 / 9.00	.506 / 12.85	YES
6	172952-0601	.236 / 6.00	.388 / 9.85	YES
4	172952-0401	.118 / 3.00	.270 / 6.85	YES
CKT SZ.	PART NUMBER	DIM A	DIM B	TOOLED

SEE SHEET 1 EC NO: UCP2017-1135 DRAWN: COLE CHKD: APPR: BPI/SZCZOR 2016/12/14 A3	QUALITY SYMBOLS ∇=0 ∇=0 ∇=0	GENERAL TOLERANCES (UNLESS SPECIFIED) <table border="1"> <tr> <th></th> <th>mm</th> <th>INCH</th> </tr> <tr> <td>4 PLACES</td> <td>± .10</td> <td>± .004</td> </tr> <tr> <td>3 PLACES</td> <td>± .15</td> <td>± .006</td> </tr> <tr> <td>2 PLACES</td> <td>± 0.25</td> <td>± .010</td> </tr> <tr> <td>1 PLACE</td> <td>± 0.38</td> <td>± .015</td> </tr> <tr> <td>0 PLACE</td> <td>± .50</td> <td>± .020</td> </tr> </table>		mm	INCH	4 PLACES	± .10	± .004	3 PLACES	± .15	± .006	2 PLACES	± 0.25	± .010	1 PLACE	± 0.38	± .015	0 PLACE	± .50	± .020	DIMENSION STYLE IN/MM DRAWN BY: BANDERSON DATE: 2014/12/30 CHECKED BY: SSOUSEK DATE: 2014/12/30 APPROVED BY: BPI/SZCZOR DATE: 2016/03/24	SCALE 5:1 DESIGN UNITS METRIC THIRD ANGLE PROJECTION	TITLE MICRO-FIT TPA DUAL-ROW RECEPTACLE HOUSING molex
		mm	INCH																				
	4 PLACES	± .10	± .004																				
	3 PLACES	± .15	± .006																				
2 PLACES	± 0.25	± .010																					
1 PLACE	± 0.38	± .015																					
0 PLACE	± .50	± .020																					
DRAFT WHERE APPLICABLE MUST REMAIN WITHIN DIMENSIONS		MATERIAL NO. SEE CHART	DOCUMENT NO. SD-172952-001	SHEET NO. 2 OF 3	THIS DRAWING CONTAINS INFORMATION THAT IS PROPRIETARY TO MOLEX INCORPORATED AND SHOULD NOT BE USED WITHOUT WRITTEN PERMISSION																		



SEE SHEET 1 EC NO: UCP2017-135 DRAWN: MCOLE CHKD: APPR: BP1/SZCZOR	2016/11/16 2016/12/14	QUALITY SYMBOLS ▽=0 ▽=0 ▽=0	GENERAL TOLERANCES (UNLESS SPECIFIED)		DIMENSION STYLE IN/MM	SCALE 5:1	DESIGN UNITS METRIC	THIRD ANGLE PROJECTION	
			4 PLACES ± --- ± ---	3 PLACES ± --- ± .010	2 PLACES ± 0.25 ± .015	1 PLACE ± 0.38 ± ---	0 PLACE ± --- ± ---	ANGULAR ±1/2°	DRAFT WHERE APPLICABLE MUST REMAIN WITHIN DIMENSIONS
A3	REV								

TITLE
**MICRO-FIT TPA
 DUAL-ROW RECEPTACLE
 HOUSING**
molex
 SD-172952-001
 3 OF 3
 THIS DRAWING CONTAINS INFORMATION THAT IS PROPRIETARY TO MOLEX
 INCORPORATED AND SHOULD NOT BE USED WITHOUT WRITTEN PERMISSION