



Chipsmall Limited consists of a professional team with an average of over 10 year of expertise in the distribution of electronic components. Based in Hongkong, we have already established firm and mutual-benefit business relationships with customers from,Europe,America and south Asia,supplying obsolete and hard-to-find components to meet their specific needs.

With the principle of “Quality Parts,Customers Priority,Honest Operation,and Considerate Service”,our business mainly focus on the distribution of electronic components. Line cards we deal with include Microchip,ALPS,ROHM,Xilinx,Pulse,ON,Everlight and Freescale. Main products comprise IC,Modules,Potentiometer,IC Socket,Relay,Connector.Our parts cover such applications as commercial,industrial, and automotives areas.

We are looking forward to setting up business relationship with you and hope to provide you with the best service and solution. Let us make a better world for our industry!



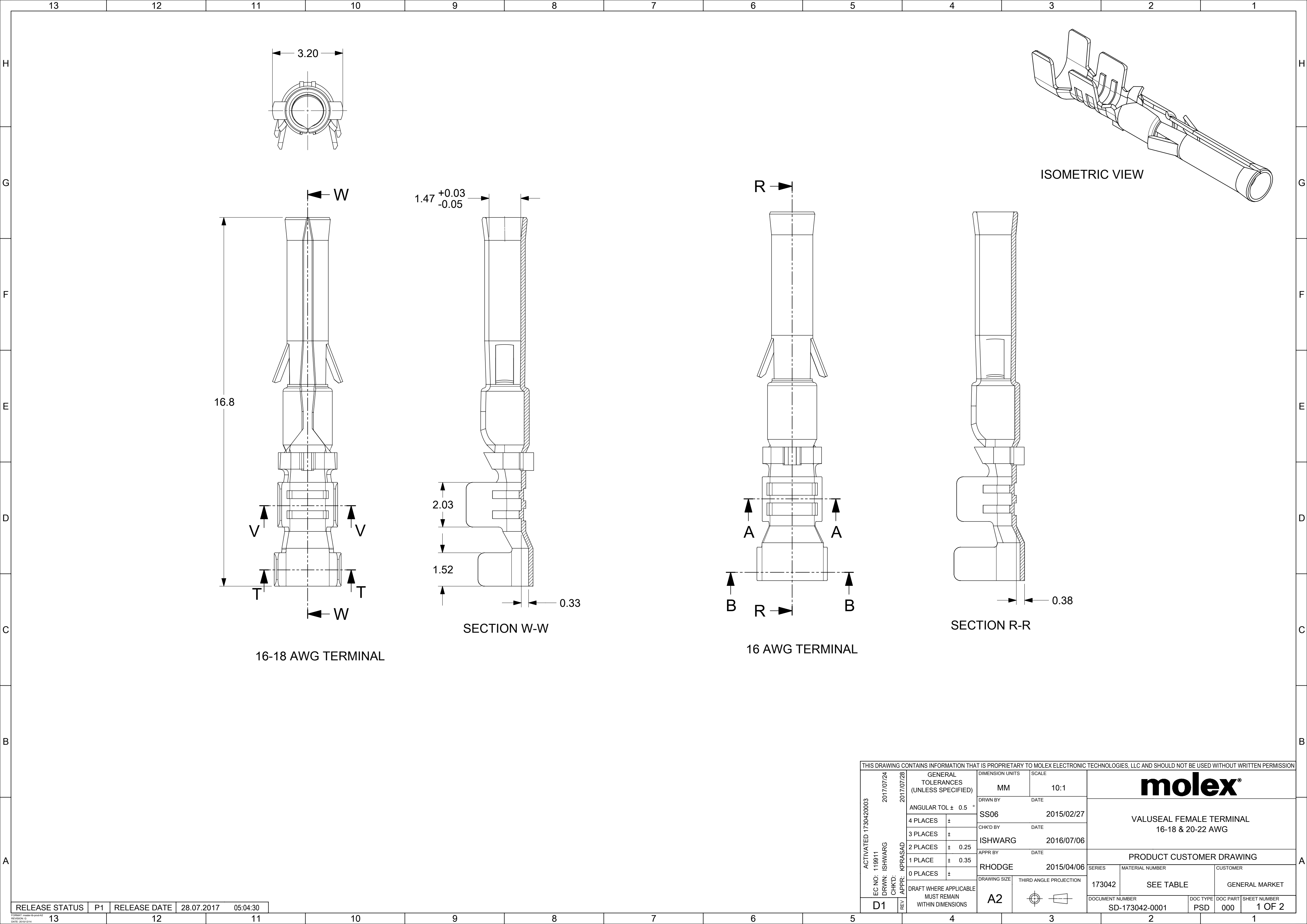
Contact us


Tel: +86-755-8981 8866 Fax: +86-755-8427 6832

Email & Skype: info@chipsmall.com Web: www.chipsmall.com

Address: A1208, Overseas Decoration Building, #122 Zhenhua RD., Futian, Shenzhen, China





THIS DRAWING CONTAINS INFORMATION THAT IS PROPRIETARY TO MOLEX ELECTRONIC TECHNOLOGIES, LLC AND SHOULD NOT BE USED WITHOUT WRITTEN PERMISSION																
ACTIVATED 1730420003 EC NO: 119911 DRWN: ISHWARG CHKD: REV / APPR: KPRASAD	2017/07/24	2017/07/28	GENERAL TOLERANCES (UNLESS SPECIFIED)		DIMENSION UNITS		SCALE		molex®							
			ANGULAR TOL ± 0.5 °		MM		10:1									
			4 PLACES ±		SS06		2015/02/27									
			3 PLACES ±		CHK'D BY		DATE		VALUSEAL FEMALE TERMINAL 16-18 & 20-22 AWG							
			2 PLACES ± 0.25		ISHWARG		2016/07/06									
			1 PLACE ± 0.35		APPR BY		DATE									
			0 PLACES ±		RHODGE		2015/04/06		PRODUCT CUSTOMER DRAWING							
			DRAFT WHERE APPLICABLE MUST REMAIN WITHIN DIMENSIONS				DRAWING SIZE								THIRD ANGLE PROJECTION	
			D1		REV	A2				173042		SEE TABLE		GENERAL MARKET		
											DOCUMENT NUMBER		DOC TYPE		DOC PART	
								SD-173042-0001		PSD		000		1 OF 2		

