



Chipsmall Limited consists of a professional team with an average of over 10 year of expertise in the distribution of electronic components. Based in Hongkong, we have already established firm and mutual-benefit business relationships with customers from,Europe,America and south Asia,supplying obsolete and hard-to-find components to meet their specific needs.

With the principle of “Quality Parts,Customers Priority,Honest Operation,and Considerate Service”,our business mainly focus on the distribution of electronic components. Line cards we deal with include Microchip,ALPS,ROHM,Xilinx,Pulse,ON,Everlight and Freescale. Main products comprise IC,Modules,Potentiometer,IC Socket,Relay,Connector.Our parts cover such applications as commercial,industrial, and automotives areas.

We are looking forward to setting up business relationship with you and hope to provide you with the best service and solution. Let us make a better world for our industry!



Contact us

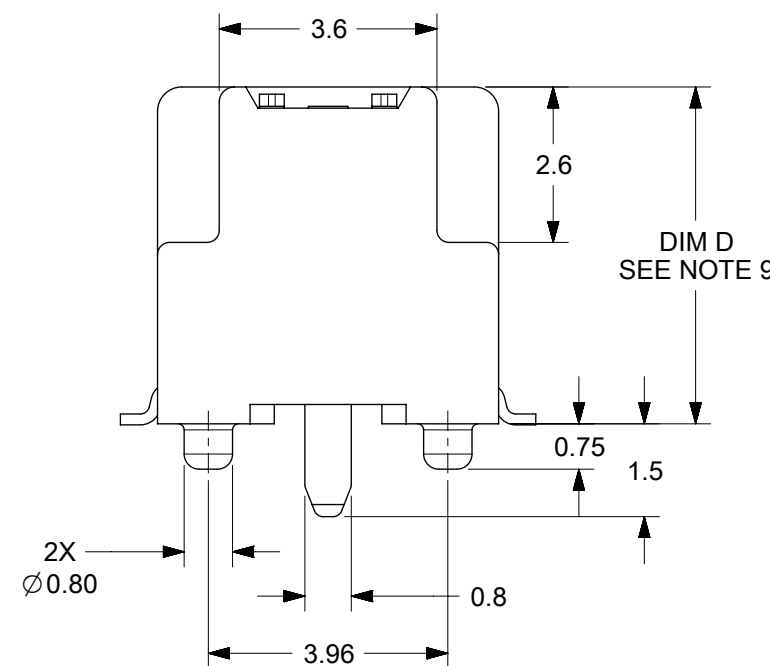
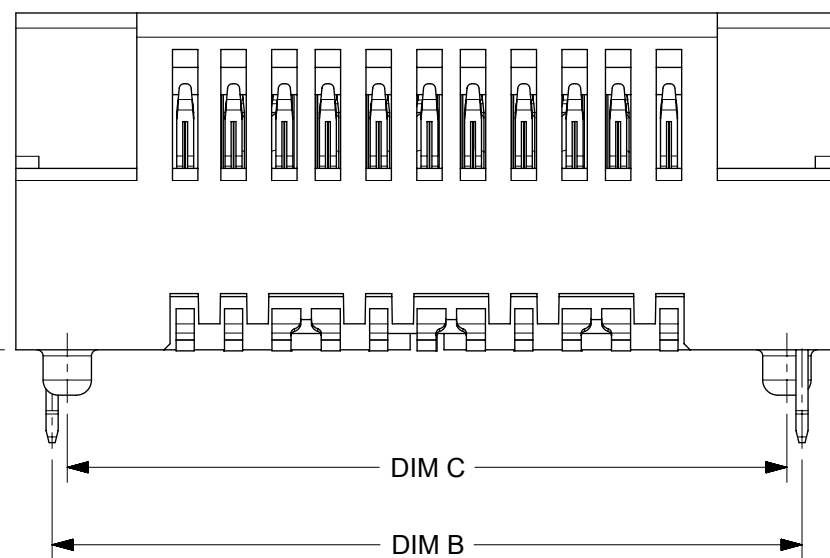
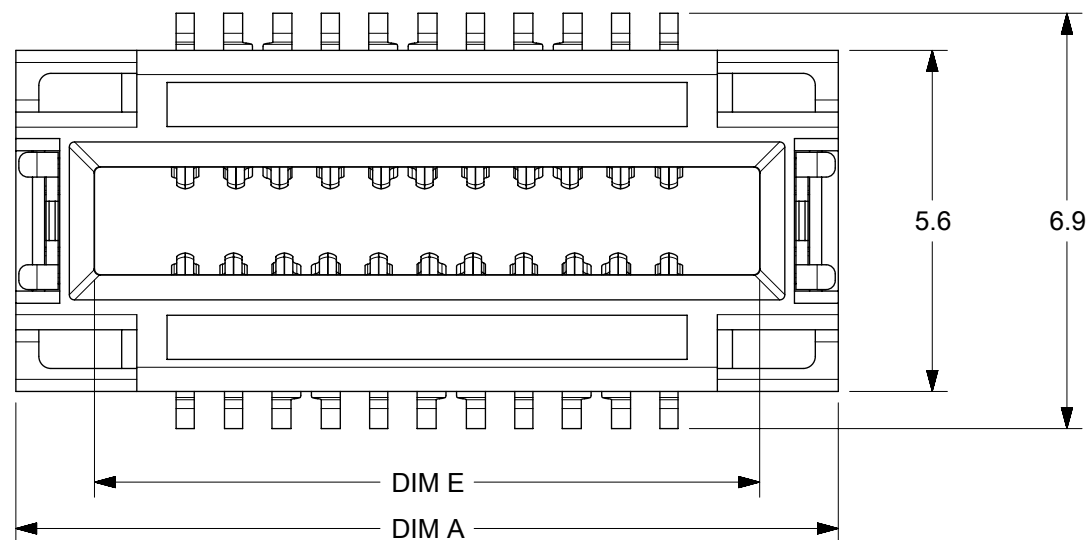
Tel: +86-755-8981 8866 Fax: +86-755-8427 6832

Email & Skype: info@chipsmall.com Web: www.chipsmall.com

Address: A1208, Overseas Decoration Building, #122 Zhenhua RD., Futian, Shenzhen, China



PART NUMBER	CKT SIZE	DIFF PAIRS	SPARE CKTS	DIM A	DIM B	DIM C	DIM E	DIM D
173300-0102	22	6	2	13.6	12.40	11.90	11.0	5.60
173300-0106	60	16	8	28.8	27.60	27.10	26.2	5.60
173300-0114	82	22	10	41.6	40.40	39.90	11.0/26.2	5.60



0.10
TAIL COPLANARITY

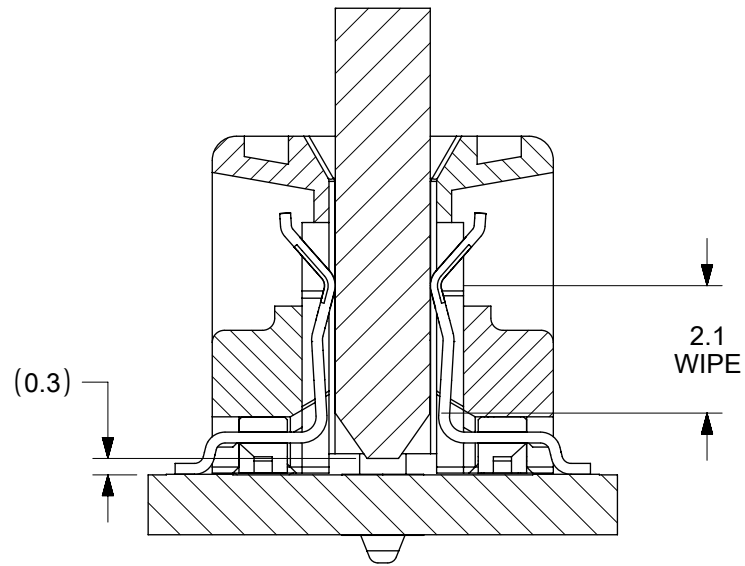
NOTES:

- MATERIAL:
HOUSING: LCP, UL94V-0, BLACK
CONTACTS: HIGH PERFORMANCE COPPER ALLOY
- FINISH: 0.76 μm MIN SELECT GOLD IN CONTACT AREA.
SELECT MATTE TIN IN TAIL AREA, OVERALL NICKEL.
- PRODUCT SPECIFICATION: PS-173300-0001
- PACKAGING SPECIFICATION: PK-70873-6002
- MATES WITH SPEEDSTACK PLUGS: SERIES 173305
- APPLICATION SPECIFICATION: AS-173300-9999
- COSMETIC SPECIFICATION: PS-45499-002 CLASS B
- PART STATUS: CONTACT MOLEX
- 5.6 DIM ON THIS DRAWING PLUS DIM D ON DRAWING #SD-173305-0100
EQUALS THE SYSTEM MATED STACK HEIGHT
- PARTS SHIPPED WITH PICK AND PLACE COVERS.

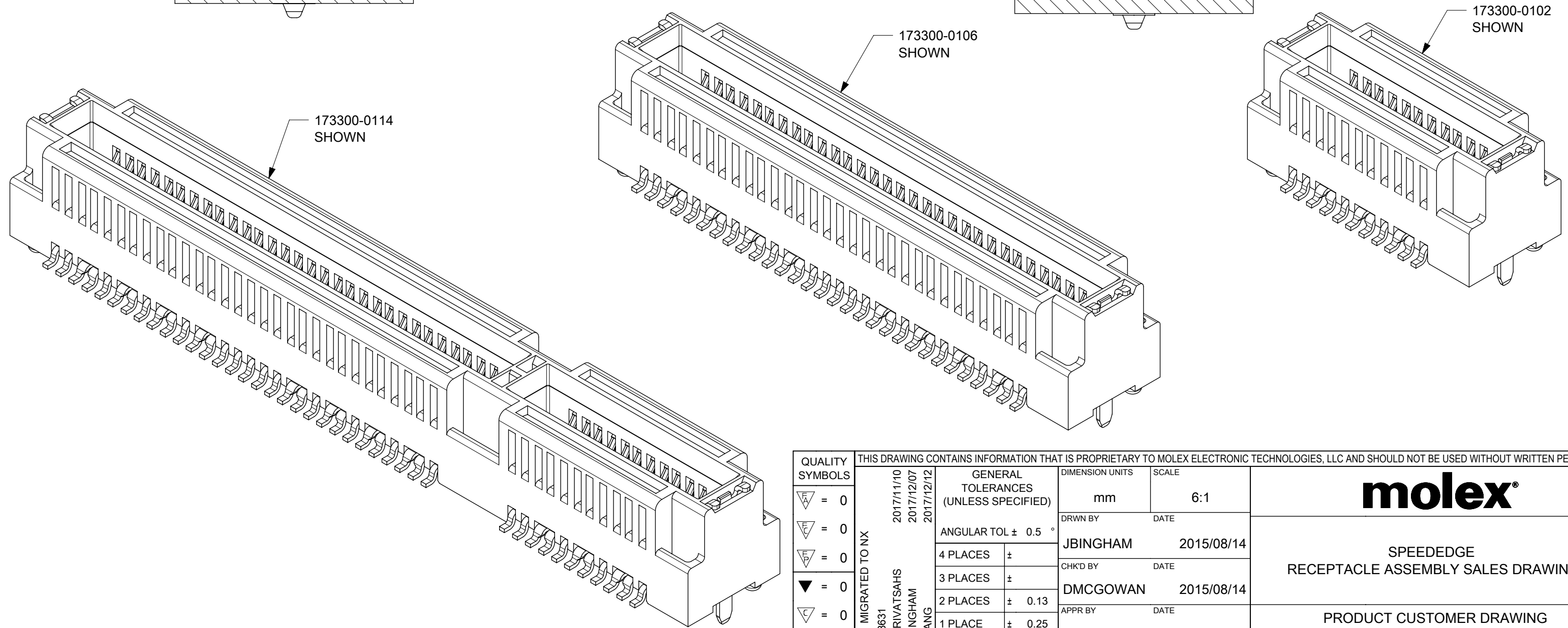
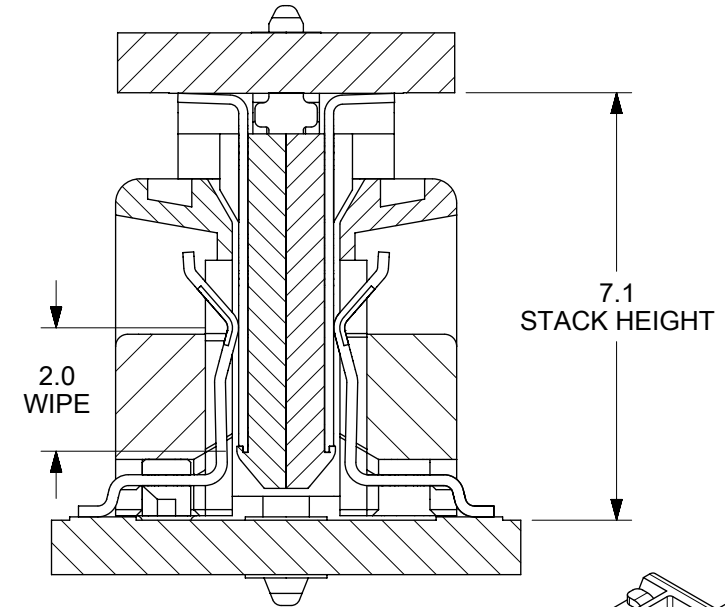
QUALITY SYMBOLS		THIS DRAWING CONTAINS INFORMATION THAT IS PROPRIETARY TO MOLEX ELECTRONIC TECHNOLOGIES, LLC AND SHOULD NOT BE USED WITHOUT WRITTEN PERMISSION																	
∇ = 0	MIGRATED TO NX EC NO: 168631 DRWN: NSRVATSAHS CHKD: JBINGHAM REV APPR: KLANG	GENERAL TOLERANCES (UNLESS SPECIFIED)		DIMENSION UNITS		SCALE													
∇ = 0		ANGULAR TOL $\pm 0.5^\circ$		mm		8:1													
∇ = 0		4 PLACES \pm		DRWN BY		DATE													
\blacktriangledown = 0		3 PLACES \pm		JBINGHAM		2015/08/14		SPEEDEDGE RECEPTACLE ASSEMBLY SALES DRAWING											
∇ = 0		2 PLACES ± 0.13		CHK'D BY		DATE													
∇ = 0		1 PLACE ± 0.25		DMCGOWAN		2015/08/14		PRODUCT CUSTOMER DRAWING											
\boxtimes = 0		0 PLACES \pm		APPR BY		DATE													
\blacksquare = 0		DRAFT WHERE APPLICABLE MUST REMAIN WITHIN DIMENSIONS		DMCGOWAN		2016/07/11		<table border="1"> <tr> <td>SERIES</td> <td>MATERIAL NUMBER</td> <td colspan="2">CUSTOMER</td> </tr> <tr> <td>173300</td> <td>SEE CHART</td> <td colspan="2">GENERAL MARKET</td> </tr> </table>				SERIES	MATERIAL NUMBER	CUSTOMER		173300	SEE CHART	GENERAL MARKET	
SERIES		MATERIAL NUMBER	CUSTOMER																
173300		SEE CHART	GENERAL MARKET																
∇ = 0	A1		DRAWING SIZE		THIRD ANGLE PROJECTION		<table border="1"> <tr> <td>DOCUMENT NUMBER</td> <td>DOC TYPE</td> <td>DOC PART</td> <td>SHEET NUMBER</td> </tr> <tr> <td>SD-173300-0100</td> <td>PSD</td> <td>001</td> <td>1 OF 8</td> </tr> </table>				DOCUMENT NUMBER	DOC TYPE	DOC PART	SHEET NUMBER	SD-173300-0100	PSD	001	1 OF 8	
DOCUMENT NUMBER	DOC TYPE	DOC PART	SHEET NUMBER																
SD-173300-0100	PSD	001	1 OF 8																
	B		B																

RELEASE STATUS	P1	RELEASE DATE	12.12.2017	14:56:12
----------------	----	--------------	------------	----------

EDGE CARD APPLICATION



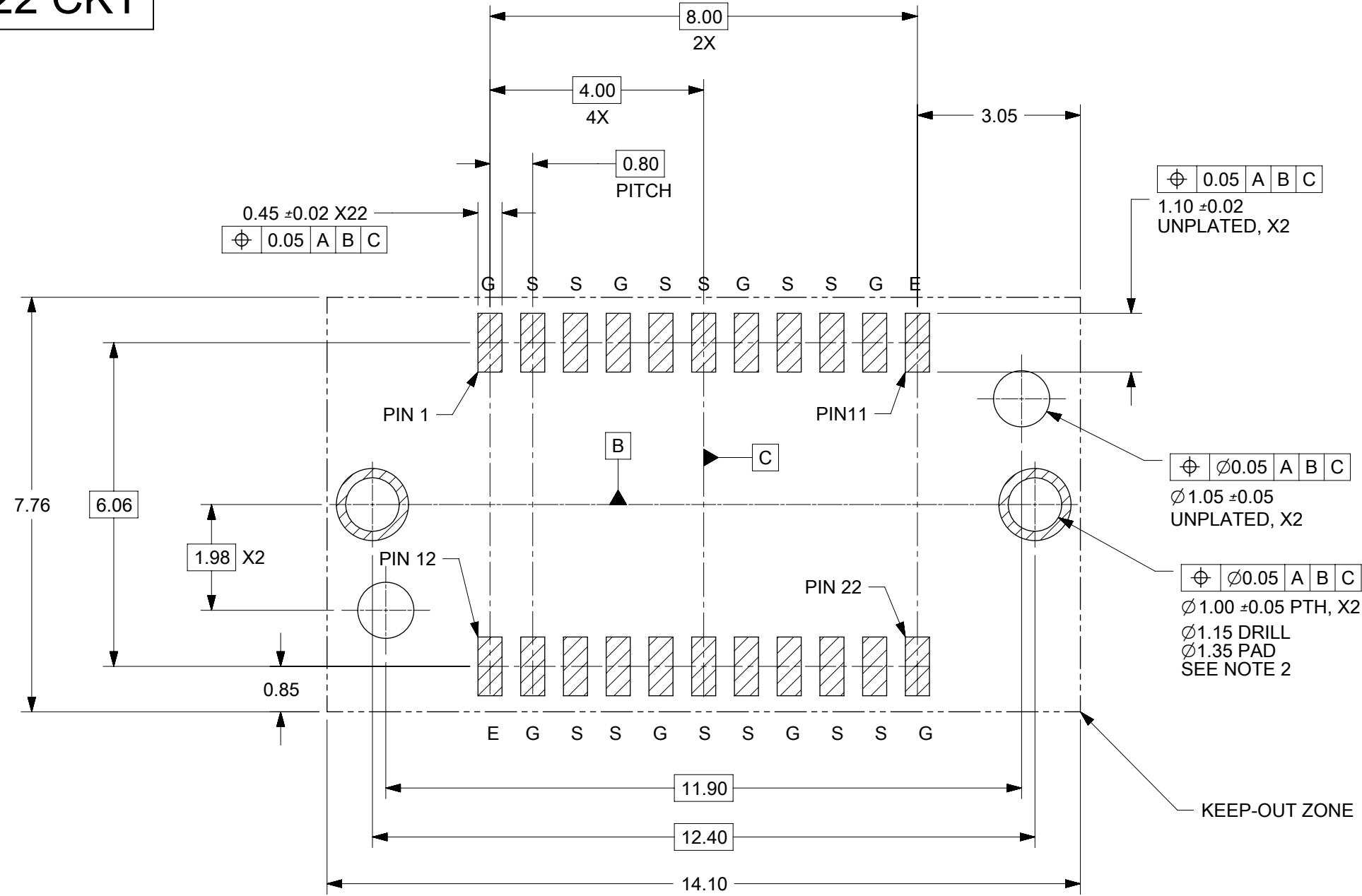
MEZZANINE APPLICATION



THIS DRAWING CONTAINS INFORMATION THAT IS PROPRIETARY TO MOLEX ELECTRONIC TECHNOLOGIES, LLC AND SHOULD NOT BE USED WITHOUT WRITTEN PERMISSION													
QUALITY SYMBOLS ▽ = 0 ▽ = 0 ▽ = 0 ▼ = 0 ▽ = 0 ⊠ = 0 ■ = 0 ▽ = 0	EC NO: 168631 DRWN: NSRIVATSAHS CHKD: JBINGHAM APPR: KLANG MIGRATED TO NX	2017/11/10 2017/12/07 2017/12/12	GENERAL TOLERANCES (UNLESS SPECIFIED)		DIMENSION UNITS	SCALE	<p>SPEEDEDGE RECEPTACLE ASSEMBLY SALES DRAWING</p> <p>PRODUCT CUSTOMER DRAWING</p>						
			ANGULAR TOL ± 0.5 °		mm	6:1							
			4 PLACES ±	3 PLACES ±	DRWN BY	DATE							
			2 PLACES ± 0.13	1 PLACE ± 0.25	JBINGHAM	2015/08/14							
			0 PLACES ±	DRAFT WHERE APPLICABLE MUST REMAIN WITHIN DIMENSIONS	CHK'D BY	DATE	SERIES			MATERIAL NUMBER	CUSTOMER		
					DMCGOWAN	2015/08/14	173300	SEE CHART	GENERAL MARKET				
					DMCGOWAN	2016/07/11	DRAWING SIZE	THIRD ANGLE PROJECTION	DOCUMENT NUMBER		DOC TYPE	DOC PART	SHEET NUMBER
							B		SD-173300-0100		PSD	001	2 OF 8

PCB LAYOUT - 22 CKT

PINOUT LEGEND	
E	= EXTRA
G	= GROUND
S	= SIGNAL



PCB LAYOUT (COMPONENT SIDE)
 SOLDER PASTE THICKNESS: 0.15 MIN
 DATUM **A** IS THE BOTTOM SURFACE OF THE PCB

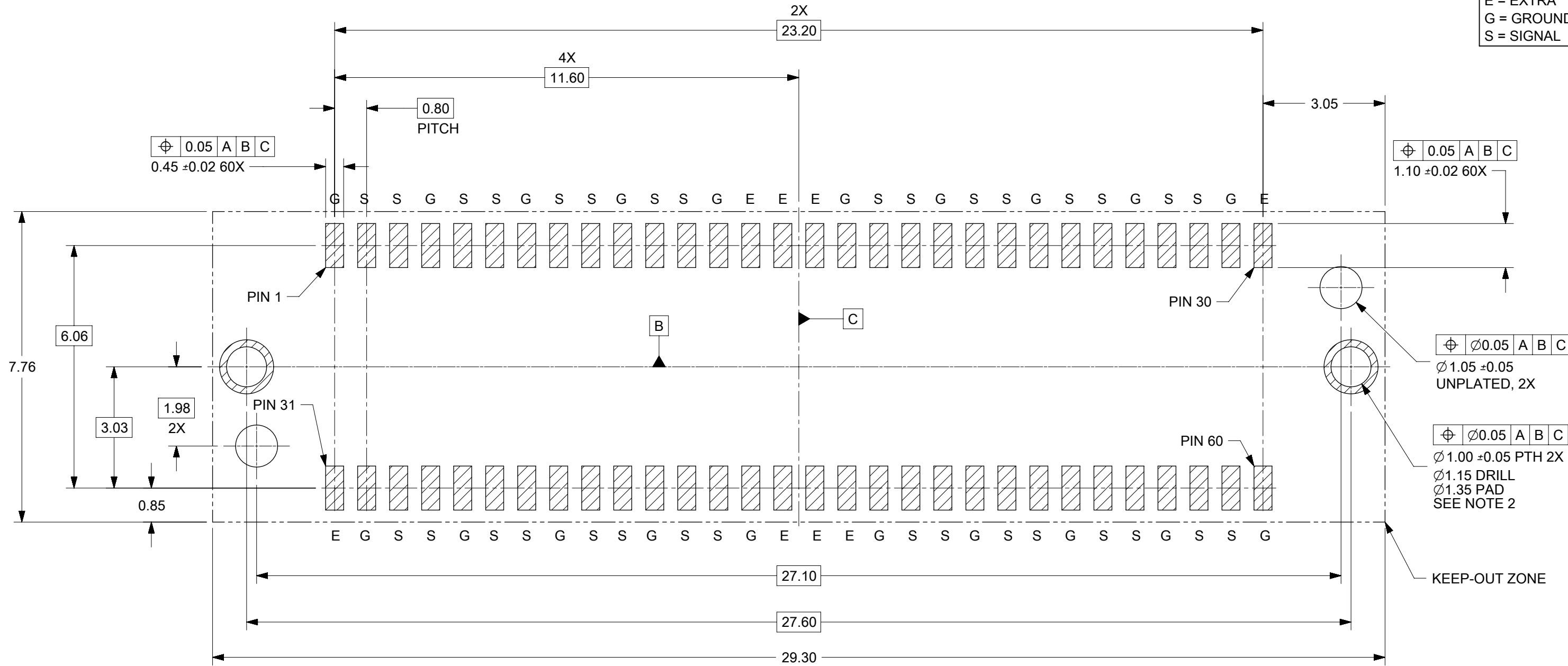
- NOTES:
- PIN NUMBERING IS FOR REFERENCE ONLY. OTHER PIN NUMBERS WILL NOT AFFECT THE OPERATION OF THE CONNECTOR.
 - RETENTION NAIL MUST BE SOLDERED ONTO THE PCB FOR PROPER CONNECTOR FUNCTION.

THIS DRAWING CONTAINS INFORMATION THAT IS PROPRIETARY TO MOLEX ELECTRONIC TECHNOLOGIES, LLC AND SHOULD NOT BE USED WITHOUT WRITTEN PERMISSION									
QUALITY SYMBOLS	EC NO: 168631 DRWN: NSRVATSAHS CHKD: JBINGHAM APPR: KLANG MIGRATED TO NX	GENERAL TOLERANCES (UNLESS SPECIFIED)		DIMENSION UNITS	SCALE				
		ANGULAR TOL ± 0.5 °		mm	10:1				
∇ = 0	EC NO: 168631 DRWN: NSRVATSAHS CHKD: JBINGHAM APPR: KLANG MIGRATED TO NX	4 PLACES ±	DRWN BY	DATE	SPEEDEDGE RECEPTACLE ASSEMBLY SALES DRAWING				
∇ = 0		3 PLACES ±	JBINGHAM	2015/08/14					
∇ = 0		2 PLACES ± 0.13	CHK'D BY	DATE					
\blacktriangledown = 0		1 PLACE ± 0.25	DMCGOWAN	2015/08/14	PRODUCT CUSTOMER DRAWING				
∇ = 0		0 PLACES ±	APP'R BY	DATE					
\boxtimes = 0		EC NO: 168631 DRWN: NSRVATSAHS CHKD: JBINGHAM APPR: KLANG MIGRATED TO NX	DRAFT WHERE APPLICABLE MUST REMAIN WITHIN DIMENSIONS		DRAWING SIZE	THIRD ANGLE PROJECTION	SERIES	MATERIAL NUMBER	CUSTOMER
\blacksquare = 0	A1		B	DMCGOWAN	2016/07/11	173300	SEE CHART	GENERAL MARKET	
∇ = 0						DOCUMENT NUMBER	DOC TYPE	DOC PART	SHEET NUMBER
						SD-173300-0100	PSD	001	3 OF 8

RELEASE STATUS	P1	RELEASE DATE	12.12.2017	14:56:12
----------------	----	--------------	------------	----------

PCB LAYOUT - 60 CKT

PINOOUT LEGEND			
E	=	EXTRA	
G	=	GROUND	
S	=	SIGNAL	



PCB LAYOUT (COMPONENT SIDE)

SOLDER PASTE THICKNESS: 0.15 MIN
 DATUM **A** IS THE BOTTOM SURFACE OF THE PCB

- NOTES:
- PIN NUMBERING IS FOR REFERENCE ONLY. OTHER PIN NUMBERS WILL NOT AFFECT THE OPERATION OF THE CONNECTOR.
 - RETENTION NAIL MUST BE SOLDERED ONTO THE PCB FOR PROPER CONNECTOR FUNCTION.

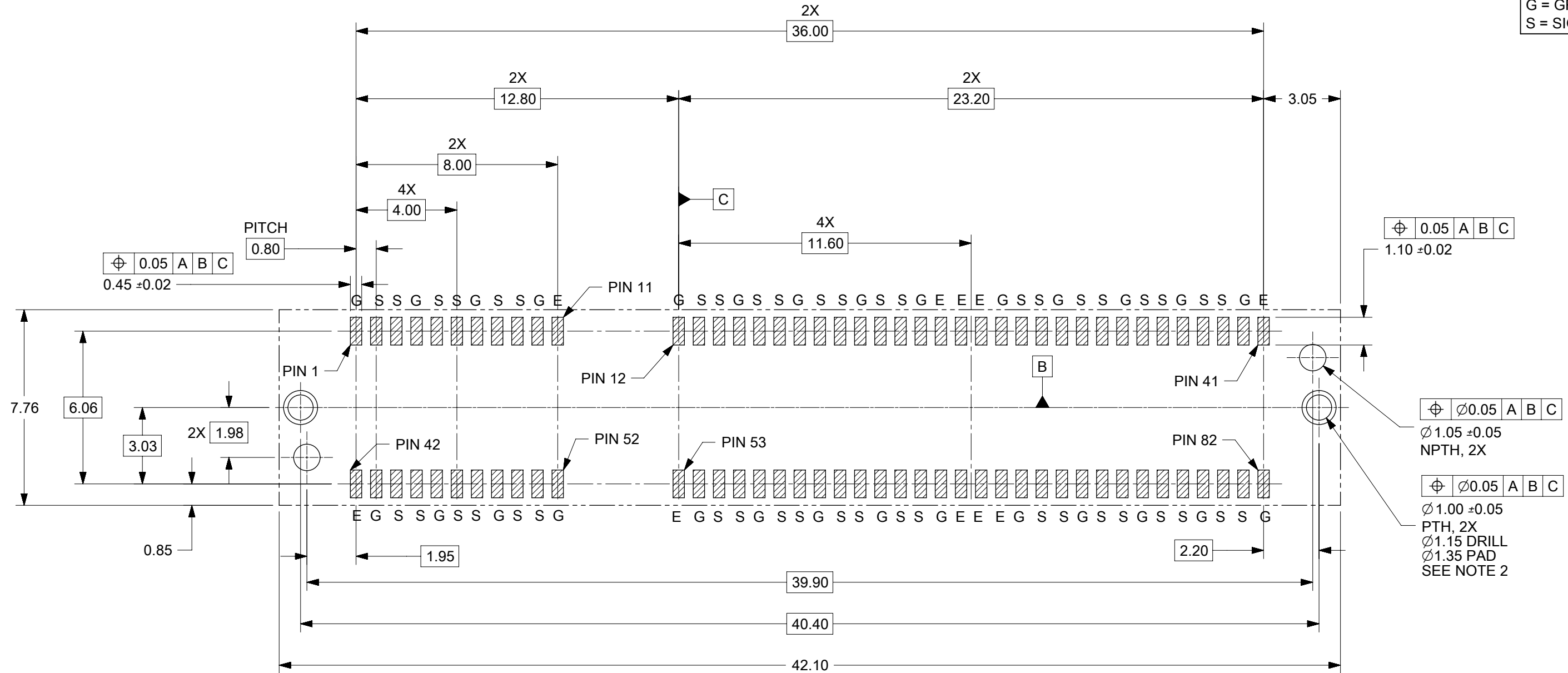
RELEASE STATUS	P1	RELEASE DATE	12.12.2017	14:56:12
----------------	----	--------------	------------	----------

THIS DRAWING CONTAINS INFORMATION THAT IS PROPRIETARY TO MOLEX ELECTRONIC TECHNOLOGIES, LLC AND SHOULD NOT BE USED WITHOUT WRITTEN PERMISSION									
QUALITY SYMBOLS	EC NO: 168631 DRWN: NSRVATSAHS CHKD: JBINGHAM APPR: KLANG MIGRATED TO NX	GENERAL TOLERANCES (UNLESS SPECIFIED)		DIMENSION UNITS	SCALE	 SPEEDEDGE RECEPTACLE ASSEMBLY SALES DRAWING PRODUCT CUSTOMER DRAWING SERIES: 173300 MATERIAL NUMBER: SEE CHART CUSTOMER: GENERAL MARKET DOCUMENT NUMBER: SD-173300-0100 DOC TYPE: PSD DOC PART: 001 SHEET NUMBER: 4 OF 8			
		ANGULAR TOL ± 0.5 °		mm	10:1				
▽ = 0	4 PLACES ±	DRWN BY	DATE						
▽ = 0	3 PLACES ±	JBINGHAM	2015/08/14						
▽ = 0	2 PLACES ± 0.13	CHK'D BY	DATE						
▽ = 0	1 PLACE ± 0.25	DMCGOWAN	2015/08/14						
▽ = 0	0 PLACES ±	APPR BY	DATE						
▽ = 0	DRAFT WHERE APPLICABLE MUST REMAIN WITHIN DIMENSIONS	DMCGOWAN	2016/07/11						
▽ = 0		DRAWING SIZE	THIRD ANGLE PROJECTION						
		B							

PCB LAYOUT - 82 CKT

PINOUT LEGEND

E = EXTRA
G = GROUND
S = SIGNAL



PCB LAYOUT (COMPONENT SIDE)

SOLDER PASTE THICKNESS: 0.15 MIN

DATUM **A** IS THE BOTTOM SURFACE OF THE PCB

NOTES:

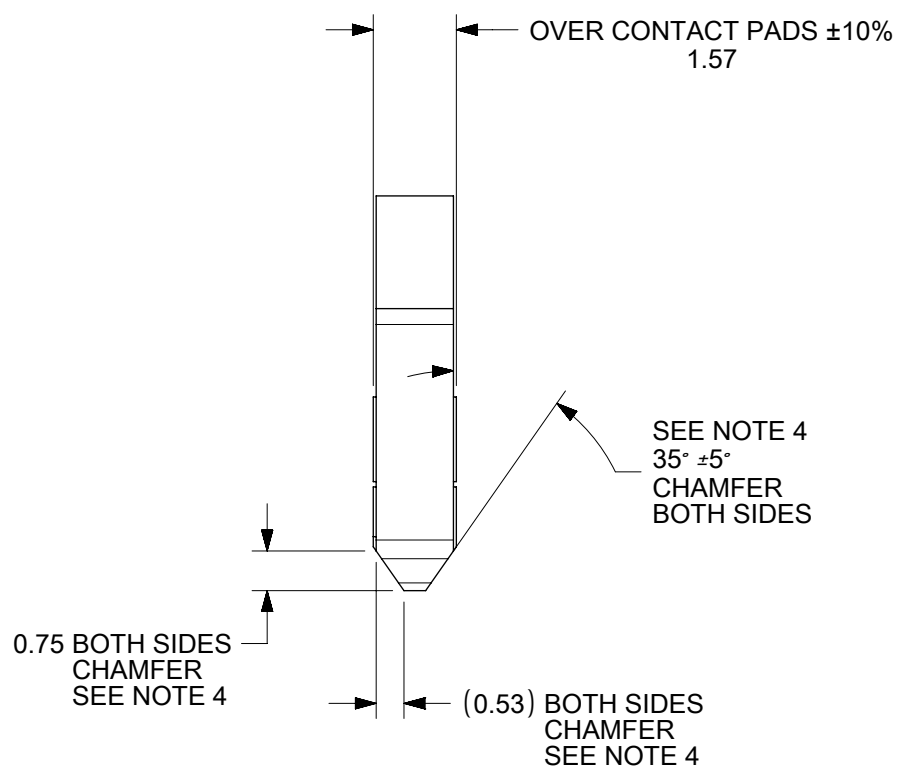
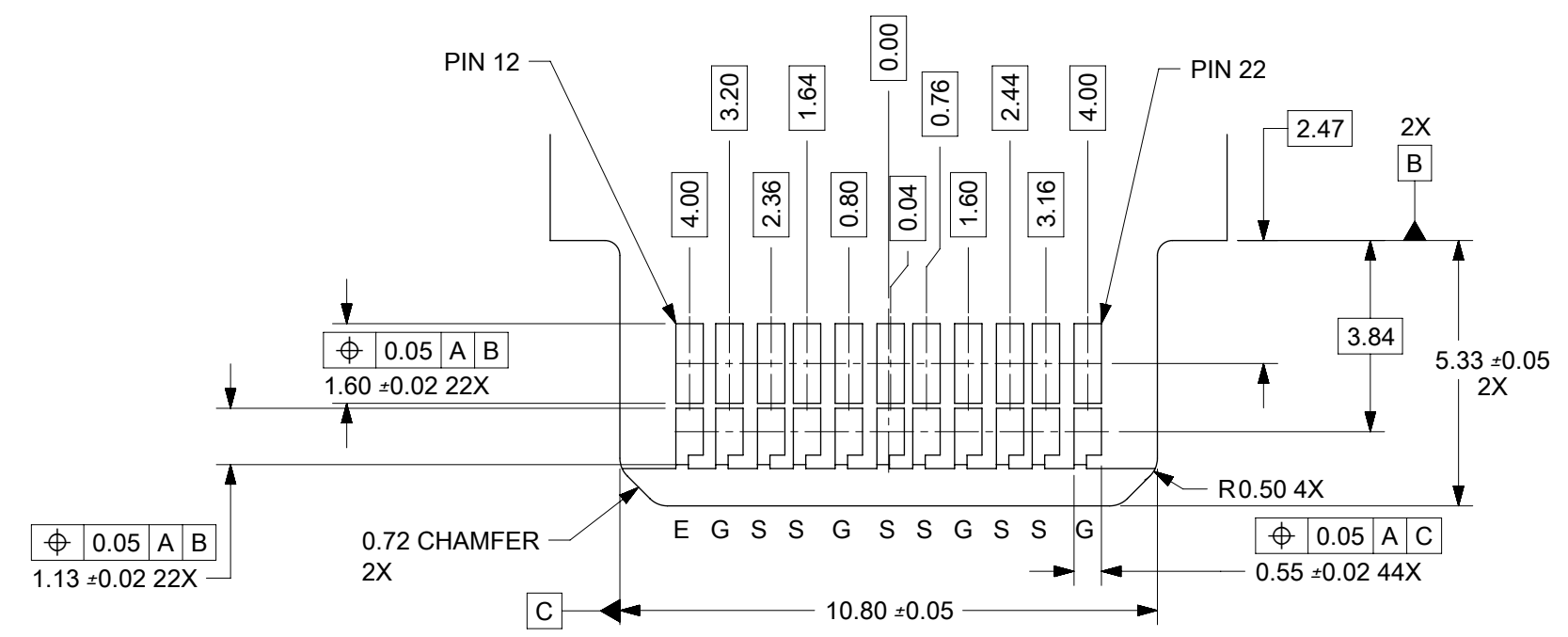
- PIN NUMBERING IS FOR REFERENCE ONLY. OTHER PIN NUMBERS WILL NOT AFFECT THE OPERATION OF THE CONNECTOR.
- RETENTION NAIL MUST BE SOLDERED ONTO THE PCB FOR PROPER CONNECTOR FUNCTION.

QUALITY SYMBOLS	THIS DRAWING CONTAINS INFORMATION THAT IS PROPRIETARY TO MOLEX ELECTRONIC TECHNOLOGIES, LLC AND SHOULD NOT BE USED WITHOUT WRITTEN PERMISSION										
∇ = 0	EC NO: 168631 DRWN: NSRVATSAHS CHK'D: JBINGHAM APPR: KLANG MIGRATED TO NX 2017/11/10 2017/12/07 2017/12/12	GENERAL TOLERANCES (UNLESS SPECIFIED)		DIMENSION UNITS	SCALE						
∇ = 0		ANGULAR TOL \pm 0.5 °		mm	6:1						
∇ = 0		4 PLACES \pm	DRWN BY	DATE	JBINGHAM					2015/08/14	
\blacktriangledown = 0		EC NO: 168631 DRWN: NSRVATSAHS CHK'D: JBINGHAM APPR: KLANG MIGRATED TO NX 2017/11/10 2017/12/07 2017/12/12	3 PLACES \pm	CHK'D BY	DATE	DMCGOWAN	2015/08/14	SPEEDEDGE RECEPTACLE ASSEMBLY SALES DRAWING			
∇ = 0			2 PLACES \pm 0.13	APPR BY	DATE	DMCGOWAN	2016/07/11				
∇ = 0			1 PLACE \pm 0.25	DRAWING SIZE		THIRD ANGLE PROJECTION	PRODUCT CUSTOMER DRAWING				
\boxtimes = 0			0 PLACES \pm	B							
\blacksquare = 0		DRAFT WHERE APPLICABLE MUST REMAIN WITHIN DIMENSIONS				SERIES		MATERIAL NUMBER		CUSTOMER	
∇ = 0						173300		SEE CHART		GENERAL MARKET	
						DOCUMENT NUMBER		DOC TYPE		DOC PART	SHEET NUMBER
					SD-173300-0100		PSD		001	5 OF 8	

EDGE CARD LAYOUT - 22 CKT

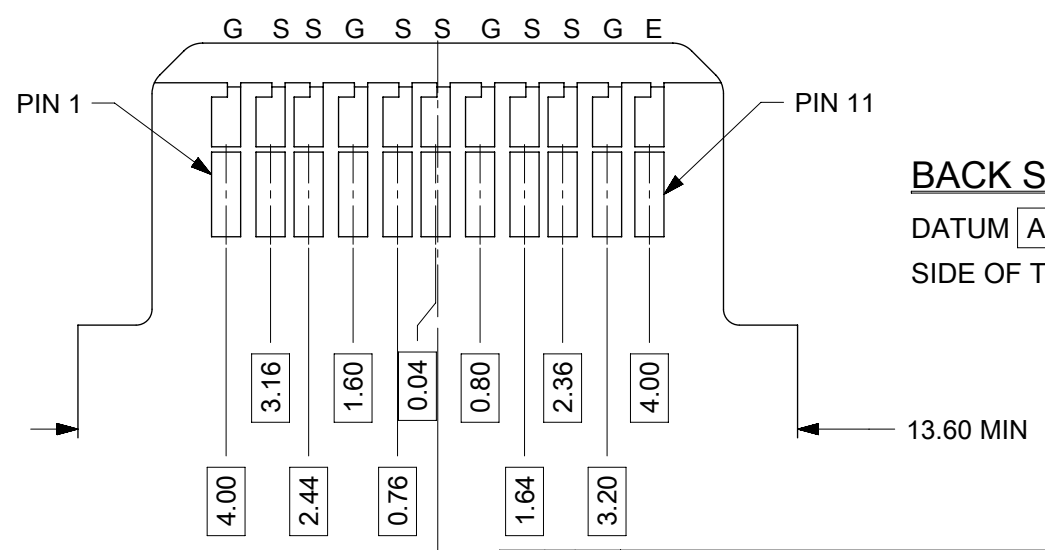
FRONT SIDE

DATUM **A** IS THE OPPOSITE SIDE OF THE PCB



BACK SIDE

DATUM **A** IS THE OPPOSITE SIDE OF THE PCB



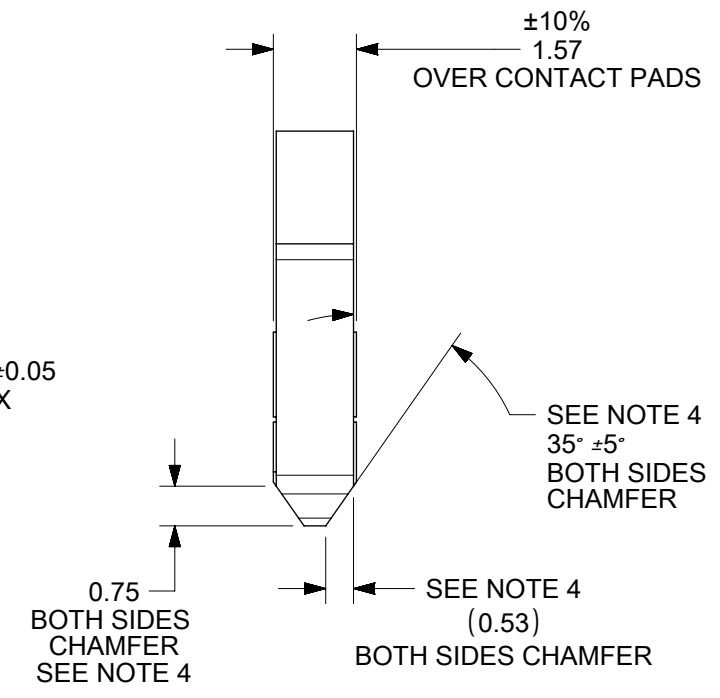
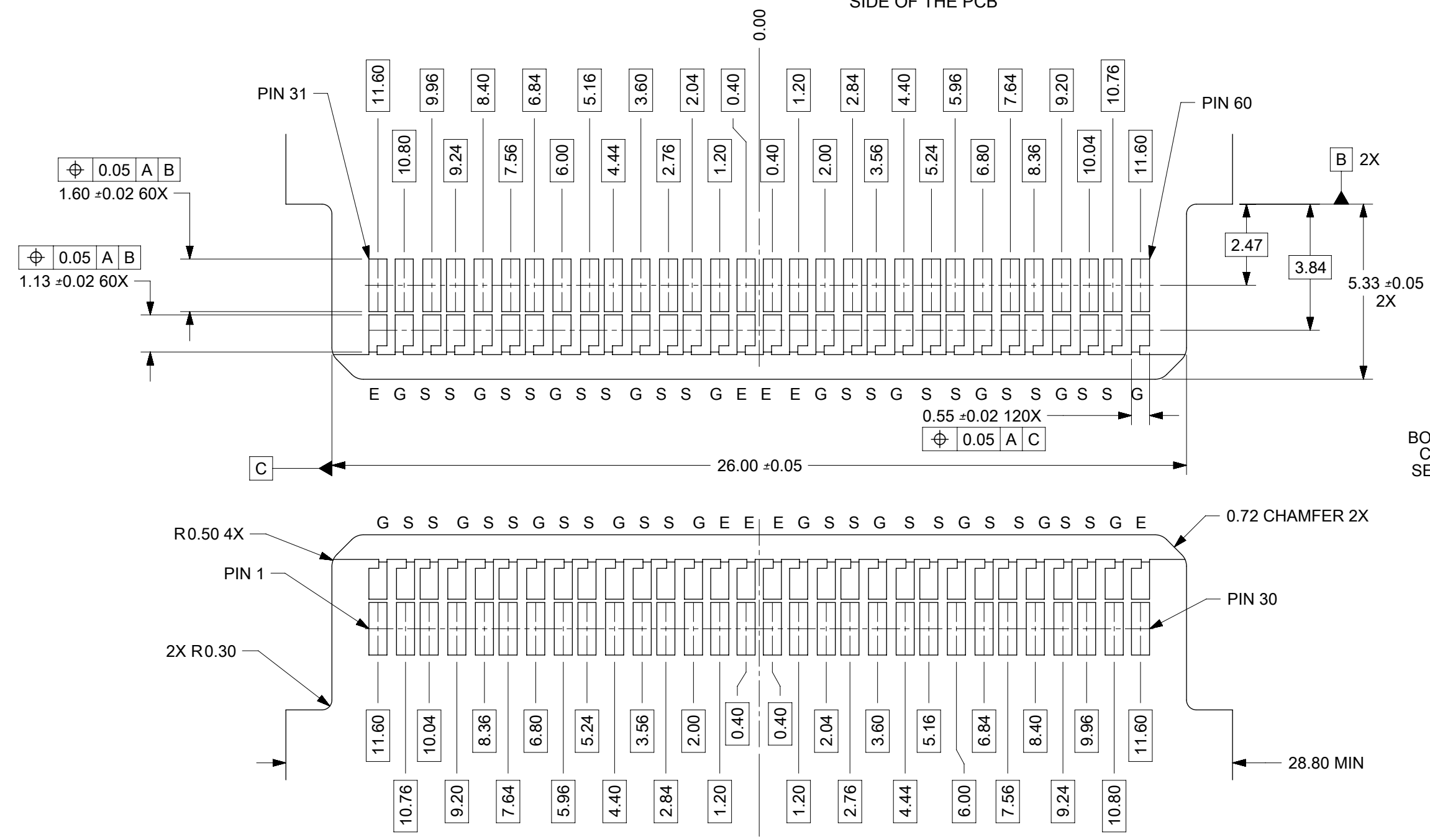
- PIN NUMBERING FOR REFERENCE ONLY. OTHER PIN NUMBERS WILL NOT AFFECT THE OPERATION OF THE CONNECTOR.
- EDGE CARD SHOULDERS STOP ON RECEPTACLE SHOULDERS. EDGE CARD BOTTOM DOES NOT CONTACT RECEPTACLE PCB.
- PAD SET BACK FROM CHAMFER ENOUGH TO ACCOMODATE LARGEST CHAMFER WITHOUT DAMAGE TO PAD EDGE.
- CHAMFER DEPTH SHOULD BE AS LARGE AS PRACTICAL TO ENSURE CORRECT MATING TO THE RECEPTACLE.
- ALL CHAMFERED EDGES SHOULD BE ROUNDED WHERE POSSIBLE.
- INTERNAL PLATING BRIDGES ARE PREFERRED TO ELIMINATE PAD STUB.

THIS DRAWING CONTAINS INFORMATION THAT IS PROPRIETARY TO MOLEX ELECTRONIC TECHNOLOGIES, LLC AND SHOULD NOT BE USED WITHOUT WRITTEN PERMISSION															
QUALITY SYMBOLS	MIGRATED TO NX	EC NO: 168631	DRWN: NSRVATSAHS	CHKD: JBINGHAM	APPR: KLANG	2017/11/10	2017/12/07	2017/12/12	GENERAL TOLERANCES (UNLESS SPECIFIED)		DIMENSION UNITS	SCALE			
									ANGULAR TOL ± 0.5 °		mm	7:1			
▽ = 0	▽ = 0	▽ = 0	▽ = 0	▽ = 0	▽ = 0	▽ = 0	▽ = 0	▽ = 0	▽ = 0	▽ = 0	▽ = 0	SPEEDEDGE RECEPTACLE ASSEMBLY SALES DRAWING			
4 PLACES ±	3 PLACES ±	2 PLACES ± 0.13	1 PLACE ± 0.25	0 PLACES ±	DRAFT WHERE APPLICABLE MUST REMAIN WITHIN DIMENSIONS		DRAFT WHERE APPLICABLE MUST REMAIN WITHIN DIMENSIONS		DRAFT WHERE APPLICABLE MUST REMAIN WITHIN DIMENSIONS		PRODUCT CUSTOMER DRAWING				
DRWN BY	DATE	CHK'D BY	DATE	APPR BY	DATE	DRAWING SIZE		THIRD ANGLE PROJECTION		SERIES		MATERIAL NUMBER		CUSTOMER	
JBINGHAM	2015/08/14	DMCGOWAN	2015/08/14	DMCGOWAN	2016/07/11	B				173300		SEE CHART		GENERAL MARKET	
DOCUMENT NUMBER			DOC TYPE			DOC PART			SHEET NUMBER			SD-173300-0100 PSD 001 6 OF 8			

EDGECARD LAYOUT - 60 CKT

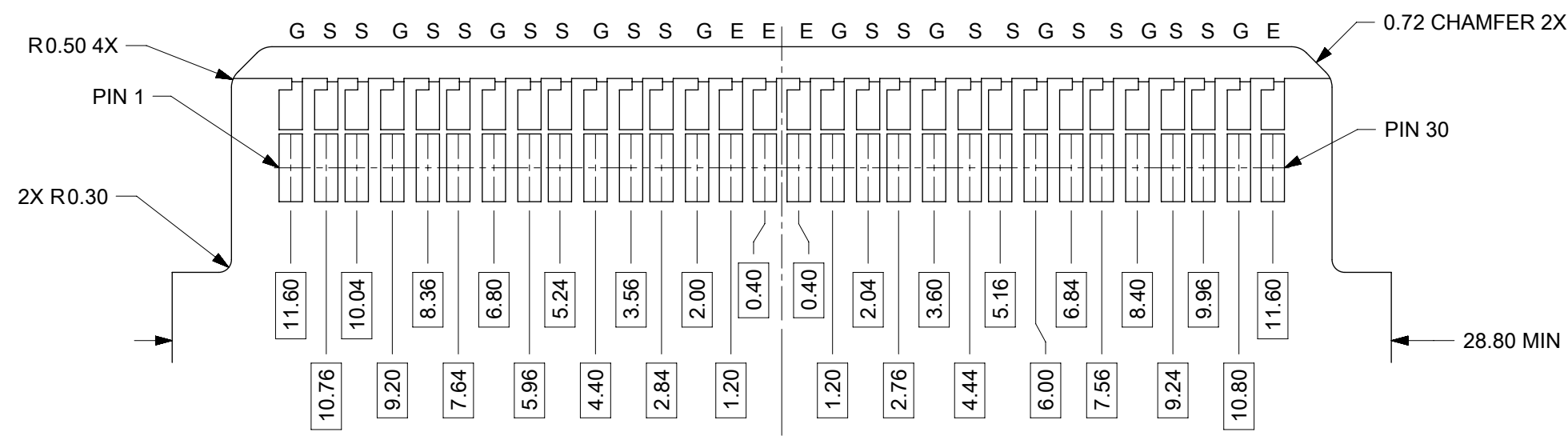
FRONT SIDE

DATUM **A** IS THE OPPOSITE SIDE OF THE PCB



BACK SIDE

DATUM **A** IS THE OPPOSITE SIDE OF THE PCB



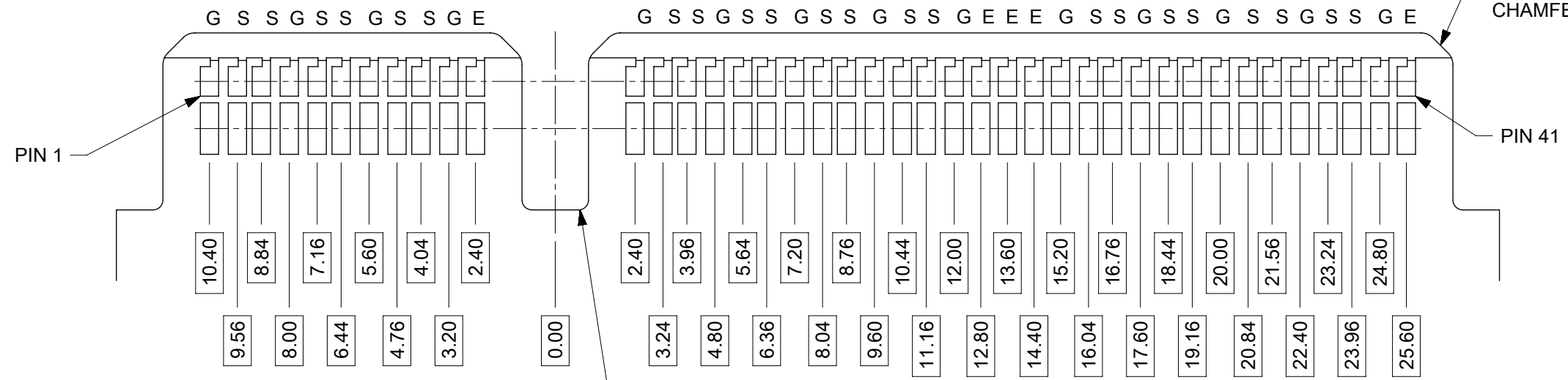
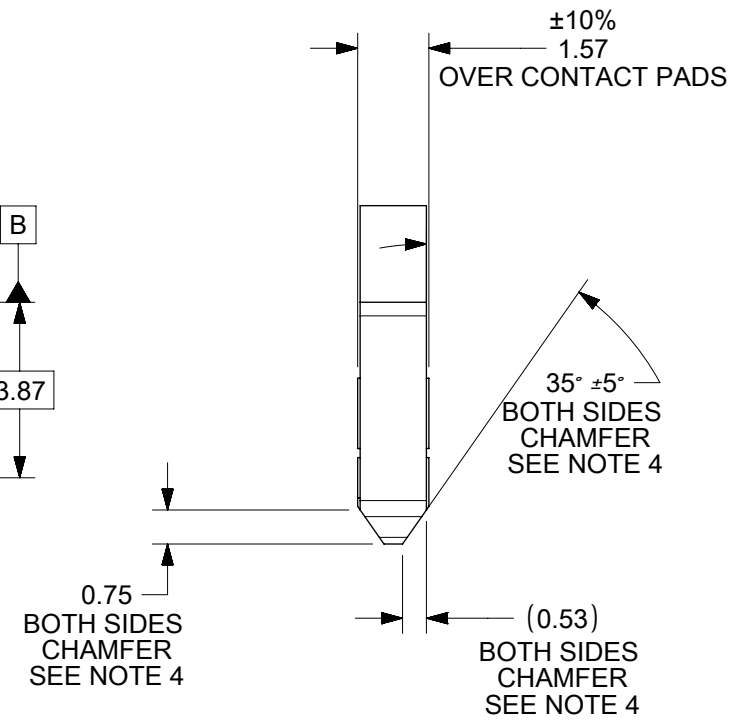
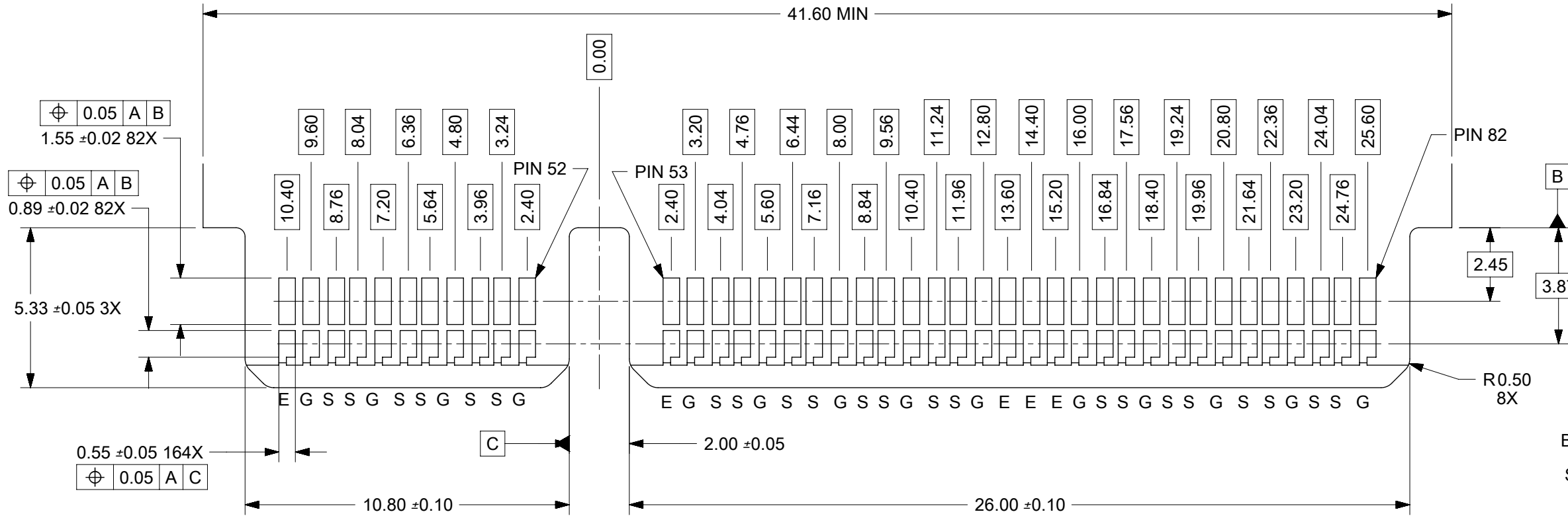
- PIN NUMBERING FOR REFERENCE ONLY. OTHER PIN NUMBERS WILL NOT AFFECT THE OPERATION OF THE CONNECTOR.
- EDGE CARD SHOULDERS STOP ON RECEPTACLE SHOULDERS. EDGE CARD BOTTOM DOES NOT CONTACT RECEPTACLE PCB.
- PAD SET BACK FROM CHAMFER ENOUGH TO ACCOMMODATE LARGEST CHAMFER WITHOUT DAMAGE TO PAD EDGE.
- CHAMFER DEPTH SHOULD BE AS LARGE AS PRACTICAL TO ENSURE CORRECT MATING TO THE RECEPTACLE.
- ALL CHAMFERED EDGES SHOULD BE ROUNDED WHERE POSSIBLE.
- INTERNAL PLATING BRIDGES ARE PREFERRED TO ELIMINATE PAD STUB.

THIS DRAWING CONTAINS INFORMATION THAT IS PROPRIETARY TO MOLEX ELECTRONIC TECHNOLOGIES, LLC AND SHOULD NOT BE USED WITHOUT WRITTEN PERMISSION												
QUALITY SYMBOLS ▽ = 0 ▽ = 0 ▽ = 0 ▼ = 0 ▽ = 0 ⊠ = 0 ■ = 0 ▽ = 0	EC NO: 168631 DRWN: NSRIVATSAHS CHKD: JBINGHAM APPR: KLANG	2017/11/10 2017/12/07 2017/12/12	GENERAL TOLERANCES (UNLESS SPECIFIED)		DIMENSION UNITS	SCALE						
			ANGULAR TOL ± 0.5 °		mm	7:1						
			4 PLACES ±	3 PLACES ±	DRWN BY	DATE						
			2 PLACES ± 0.13	1 PLACE ± 0.25	JBINGHAM	2015/08/14						
0 PLACES ±		3 PLACES ±	2 PLACES ±	1 PLACE ±	0 PLACES ±	CHK'D BY	DATE	SPEEDEDGE RECEPTACLE ASSEMBLY SALES DRAWING				
DRAFT WHERE APPLICABLE MUST REMAIN WITHIN DIMENSIONS		DMCGOWAN	2015/08/14	DMCGOWAN	2016/07/11	PRODUCT CUSTOMER DRAWING						
DRAWING SIZE: B		THIRD ANGLE PROJECTION		SERIES: 173300		MATERIAL NUMBER: SEE CHART		CUSTOMER: GENERAL MARKET				
RELEASE STATUS: P1		RELEASE DATE: 12.12.2017 14:56:12		DOCUMENT NUMBER: SD-173300-0100		DOC TYPE: PSD		DOC PART: 001		SHEET NUMBER: 7 OF 8		

EDGE CARD LAYOUT - 82 CKT

FRONT SIDE

DATUM **A** IS THE OPPOSITE SIDE OF THE PCB



BACK SIDE

DATUM **A** IS THE OPPOSITE SIDE OF THE PCB

- PIN NUMBERING FOR REFERENCE ONLY. OTHER PIN NUMBERS WILL NOT AFFECT THE OPERATION OF THE CONNECTOR.
- EDGE CARD SHOULDERS STOP ON RECEPTACLE SHOULDERS. EDGE CARD BOTTOM DOES NOT CONTACT RECEPTACLE PCB.
- PAD SET BACK FROM CHAMFER ENOUGH TO ACCOMODATE LARGEST CHAMFER WITHOUT DAMAGE TO PAD EDGE.
- CHAMFER DEPTH SHOULD BE AS LARGE AS PRACTICAL TO ENSURE CORRECT MATING TO THE RECEPTACLE.
- ALL CHAMFERED EDGES SHOULD BE ROUNDED WHERE POSSIBLE.
- INTERNAL PLATING BRIDGES ARE PREFERRED TO ELIMINATE PAD STUB.

THIS DRAWING CONTAINS INFORMATION THAT IS PROPRIETARY TO MOLEX ELECTRONIC TECHNOLOGIES, LLC AND SHOULD NOT BE USED WITHOUT WRITTEN PERMISSION

QUALITY SYMBOLS	MIGRATED TO NX	EC NO: 168631	GENERAL TOLERANCES (UNLESS SPECIFIED)	DIMENSION UNITS	SCALE	
		DRWN: NSRVATSAHS	4 PLACES ±	mm	6:1	
		CHKD: JBINGHAM	3 PLACES ±	DRWN BY	DATE	
		APPR: KLANG	2 PLACES ± 0.13	JBINGHAM	2015/08/14	
			1 PLACE ± 0.25	CHK'D BY	DATE	
			0 PLACES ±	DMCGOWAN	2015/08/14	
			DRAFT WHERE APPLICABLE MUST REMAIN WITHIN DIMENSIONS	APPR BY	DATE	
				DMCGOWAN	2016/07/11	
				DRAWING SIZE	THIRD ANGLE PROJECTION	
				B		

molex			
SPEEDEDGE RECEPTACLE ASSEMBLY SALES DRAWING			
PRODUCT CUSTOMER DRAWING			
SERIES	MATERIAL NUMBER	CUSTOMER	
173300	SEE CHART	GENERAL MARKET	
DOCUMENT NUMBER		DOC TYPE	DOC PART SHEET NUMBER
SD-173300-0100		PSD	001 8 OF 8