



Chipsmall Limited consists of a professional team with an average of over 10 year of expertise in the distribution of electronic components. Based in Hongkong, we have already established firm and mutual-benefit business relationships with customers from,Europe,America and south Asia,supplying obsolete and hard-to-find components to meet their specific needs.

With the principle of “Quality Parts,Customers Priority,Honest Operation,and Considerate Service”,our business mainly focus on the distribution of electronic components. Line cards we deal with include Microchip,ALPS,ROHM,Xilinx,Pulse,ON,Everlight and Freescale. Main products comprise IC,Modules,Potentiometer,IC Socket,Relay,Connector.Our parts cover such applications as commercial,industrial, and automotives areas.

We are looking forward to setting up business relationship with you and hope to provide you with the best service and solution. Let us make a better world for our industry!



## Contact us

Tel: +86-755-8981 8866 Fax: +86-755-8427 6832

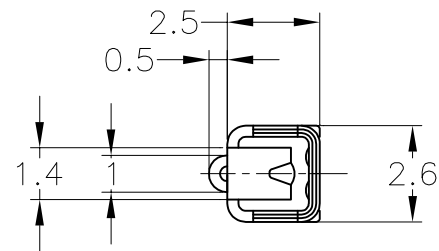
Email & Skype: [info@chipsmall.com](mailto:info@chipsmall.com) Web: [www.chipsmall.com](http://www.chipsmall.com)

Address: A1208, Overseas Decoration Building, #122 Zhenhua RD., Futian, Shenzhen, China

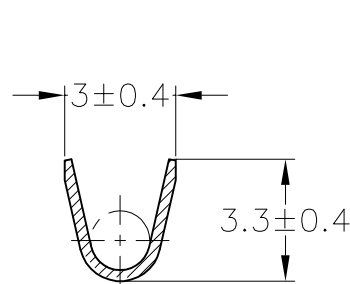
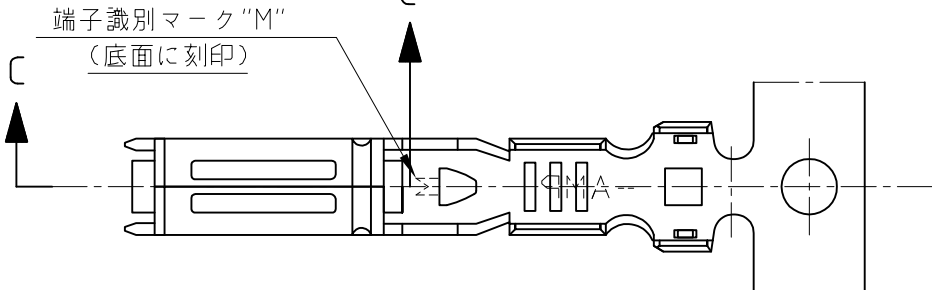


LOC	DIST	REVISIONS					
		P	LTR	DESCRIPTION	DATE	DWN	APVD
J	—		F	REVISED	ECR-14-018500	18DEC2014	TS YF

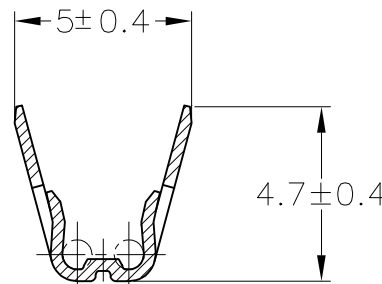
D



WIRE RANGE ID MARK  
("M" SIZE MARK)  
(STAMPED ON BOTTOM)

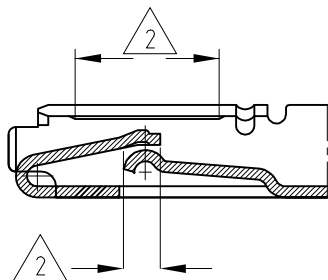


断面 A-A  
SECT A-A

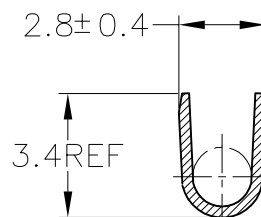
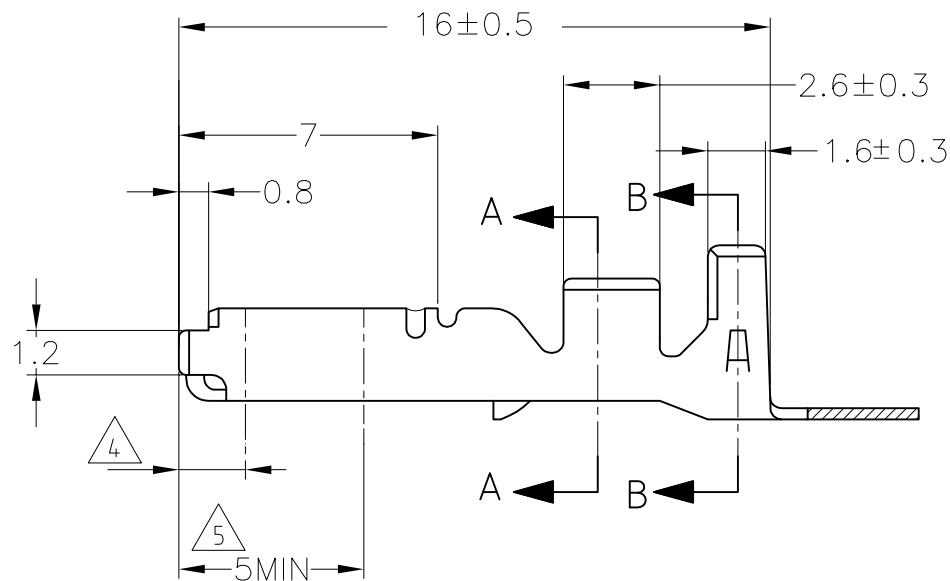


断面 B-B  
SECT B-B

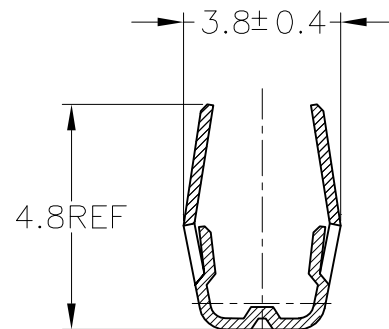
C



断面 C-C  
SECT C-C



断面 A-A  
SECT A-A  
(175027のみ適用)  
(ONLY 175027)



断面 B-B  
SECT B-B  
(175027のみ適用)  
(ONLY 175027)

B

- 製品規格 ; 108-5216, 108-5231, 108-5264, 108-3371
- 部分金めっき
- 取付適用規格 ; 114-5091
- 識別用金めっき (全周)
- 部分金めっき (両側のみ)

- SPEC; 108-5216, 108-5231, 108-5264, 108-3371
- SELECTIVE GOLD PLATING
- APPLICATION SPEC; 114-5091
- GOLD PLATING FOR DISCERNMENT (ALL AROUND)
- SELECTIVE GOLD PLATING (ONLY BOTH SIDES OF THE BOX)

A

TOLERANCE UNLESS OTHERWISE SPECIFIED: 一般公差	
0<x≤ 10	±0.2
10<x≤ 30	±0.25
30<x≤ 100	±0.3
ANGLE	±3°

WIRE RANGE 0.5~1.25mm <sup>2</sup> (AWG#20-#16)		INSULATION DIA. 2~2.6mmφ		DWN M.SUGAWARA CHK T.SHINOHARA APVD K.BETSUI		12MAY06		TE Connectivity	
DIMENSIONS: 単位: 耗 mm		TOLERANCES UNLESS OTHERWISE SPECIFIED: 一般公差		PRODUCT SPEC 製品規格		APPLICATION SPEC 取付適用規格		NAME 名称	
MATERIAL 材料		FINISH 仕上		WEIGHT —		CUSTOMER DRAWING		070 SERIES RECEPTACLE CONTACT	
SEE TABLE		SEE TABLE		—		A300779		C-173631	
SCALE 尺度		SHEET 1 of 1		REV F		RESTRICTED TO		—	