



Chipsmall Limited consists of a professional team with an average of over 10 year of expertise in the distribution of electronic components. Based in Hongkong, we have already established firm and mutual-benefit business relationships with customers from,Europe,America and south Asia,supplying obsolete and hard-to-find components to meet their specific needs.

With the principle of “Quality Parts,Customers Priority,Honest Operation,and Considerate Service”,our business mainly focus on the distribution of electronic components. Line cards we deal with include Microchip,ALPS,ROHM,Xilinx,Pulse,ON,Everlight and Freescale. Main products comprise IC,Modules,Potentiometer,IC Socket,Relay,Connector.Our parts cover such applications as commercial,industrial, and automotives areas.

We are looking forward to setting up business relationship with you and hope to provide you with the best service and solution. Let us make a better world for our industry!



## Contact us

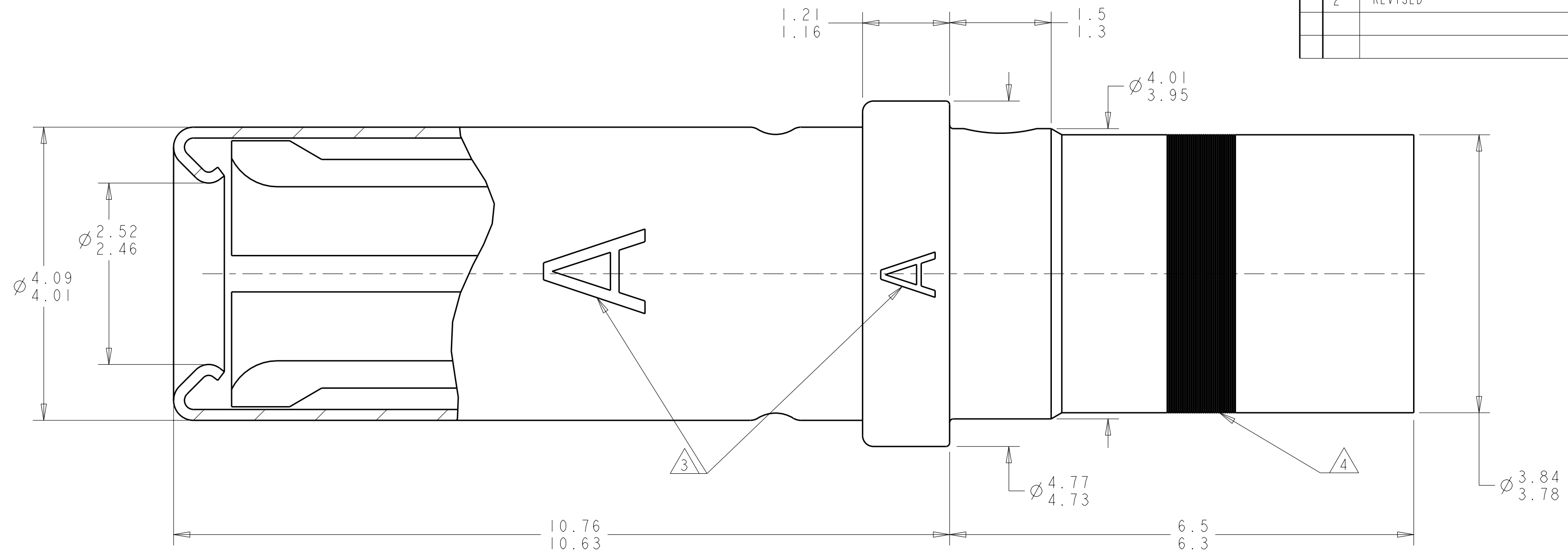
Tel: +86-755-8981 8866 Fax: +86-755-8427 6832

Email & Skype: [info@chipsmall.com](mailto:info@chipsmall.com) Web: [www.chipsmall.com](http://www.chipsmall.com)

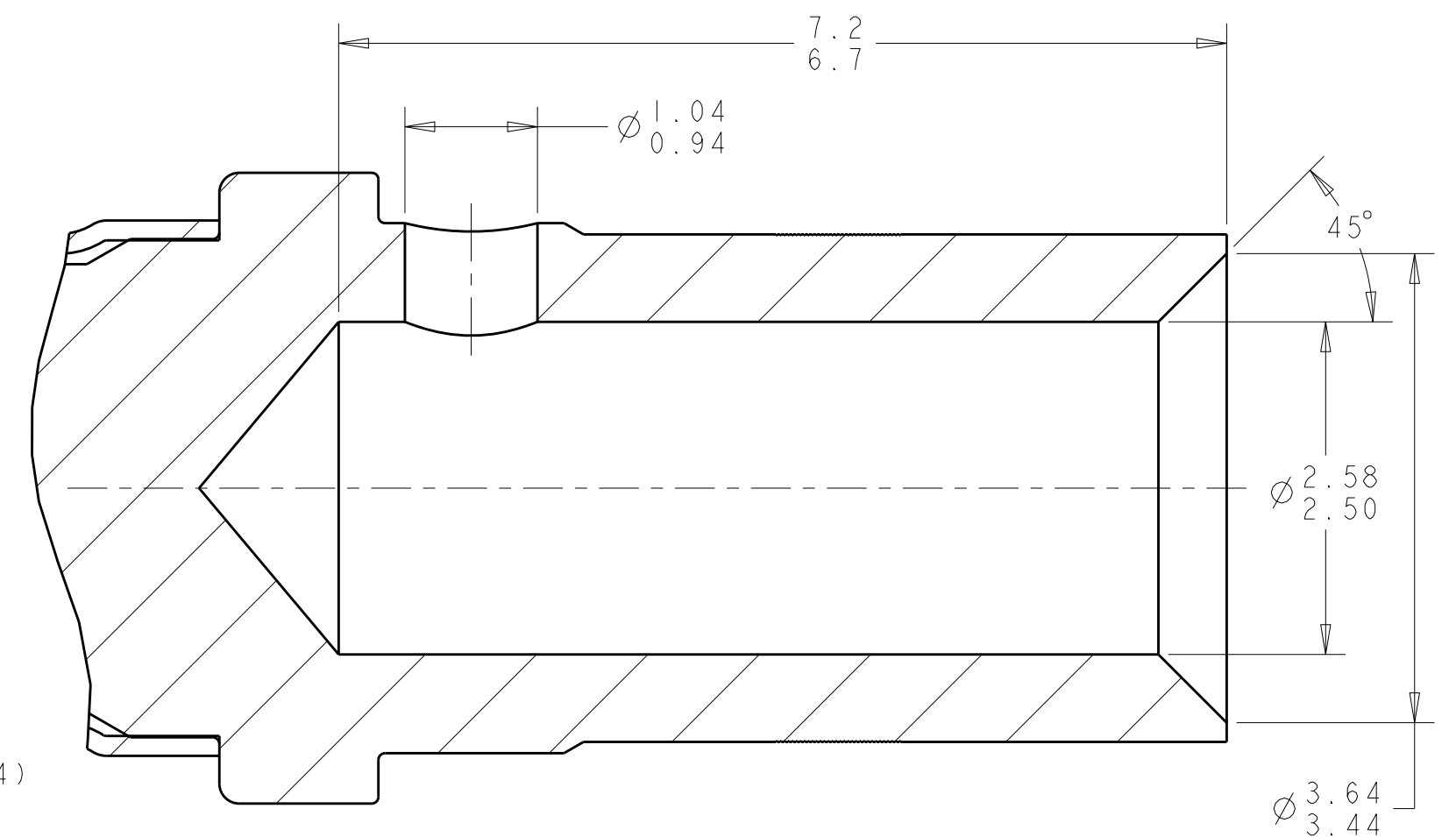
Address: A1208, Overseas Decoration Building, #122 Zhenhua RD., Futian, Shenzhen, China



LOC	DIST	REVISIONS					
DF	A5	P	LTR	DESCRIPTION	DATE	DWN	APVD
			1	PROPOSED	28FEB2005	BW	JPM
			2	REVISED	05AUG2010	BW	JM




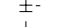


- ① CONTACT: COPPER ALLOY PER ASTM B196.  
SLEEVE: STAINLESS STEEL PER AISI 305.
  - ② CONTACT: 1.27μm MIN GOLD PER ASTM B488 OVER OVER 2.54μm  
MIN NICKEL PER QQ-N-290 ON ENTIRE STOCK.  
SLEEVE: PASSIVATED.
  - ③ TWO POSSIBLE LOCATIONS FOR THE LETTER "A" MARKING.  
OPTIONAL ALTERNATE MARKING: LETTER "S"
  - ④ YELLOW COLOR BAND.
5. APPLICABLE WIRE SIZE: 12-16 AWG  
WIRE INSULATION DIAMETER: 3.4mm MAX  
INSULATION STRIP LENGTH: 5.75mm-6.25mm
  6. APPLICATION TOOLING:  
CRIMPING TOOL: TYCO PART NUMBER 601967-1 (M22520/1-01)  
POSITIONER: TYCO PART NUMBER 601967-2 (M22520/-02)  
SELECTION POSITION: AWG 12 : 8  
AWG 14 : 7  
AWG 16 : 6  
CONTACT INSERTION/EXTRACTION TOOL: 1738327-1 (M81969/28-02) OR 1-1192028-1 (M81969/14-04)
  7. THIS PRODUCT IS SOLD BY TYCO ELECTRONICS UNDER A LICENSE FROM RADIALL SA.



1738018-1
PART NUMBER

THIS PRINT IS  
**PRELIMINARY**  
UNQUALIFIED PRODUCT  
CONTACT PRODUCT ENGINEERING  
BEFORE USING THIS PRINT

THIS DRAWING IS A CONTROLLED DOCUMENT FOR TYCO ELECTRONICS CORPORATION IT IS SUBJECT TO CHANGE AND THE CONTROLLING ENGINEERING ORGANIZATION SHOULD BE CONTACTED FOR THE LATEST REVISION.		DWN BW 28FEB2005		 Tyco Electronics Harrisburg, PA 17105-3608	
DIMENSIONS: mm		TOLERANCES UNLESS OTHERWISE SPECIFIED:		CHG JPM 28FEB2005	
		0 PLC ±.1 1 PLC ±.1 2 PLC ±.1 3 PLC ±.1 4 PLC ±.1 ANGLES ±30'		APVD JPM 28FEB2005	
MATERIAL		FINISH		NAME SOCKET CONTACT ASSEMBLY, SIZE 12, GPR	
				PRODUCT SPEC -	
				APPLICATION SPEC -	
				SIZE A2	
				CAGE CODE 00779	
				DRAWING NO C-1738018	
				RESTRICTED TO -	
CUSTOMER DRAWING				SCALE 20:1	
				SHEET 1 OF 1	
				REV 2	