



Chipsmall Limited consists of a professional team with an average of over 10 year of expertise in the distribution of electronic components. Based in Hongkong, we have already established firm and mutual-benefit business relationships with customers from,Europe,America and south Asia,supplying obsolete and hard-to-find components to meet their specific needs.

With the principle of “Quality Parts,Customers Priority,Honest Operation,and Considerate Service”,our business mainly focus on the distribution of electronic components. Line cards we deal with include Microchip,ALPS,ROHM,Xilinx,Pulse,ON,Everlight and Freescale. Main products comprise IC,Modules,Potentiometer,IC Socket,Relay,Connector.Our parts cover such applications as commercial,industrial, and automotives areas.

We are looking forward to setting up business relationship with you and hope to provide you with the best service and solution. Let us make a better world for our industry!



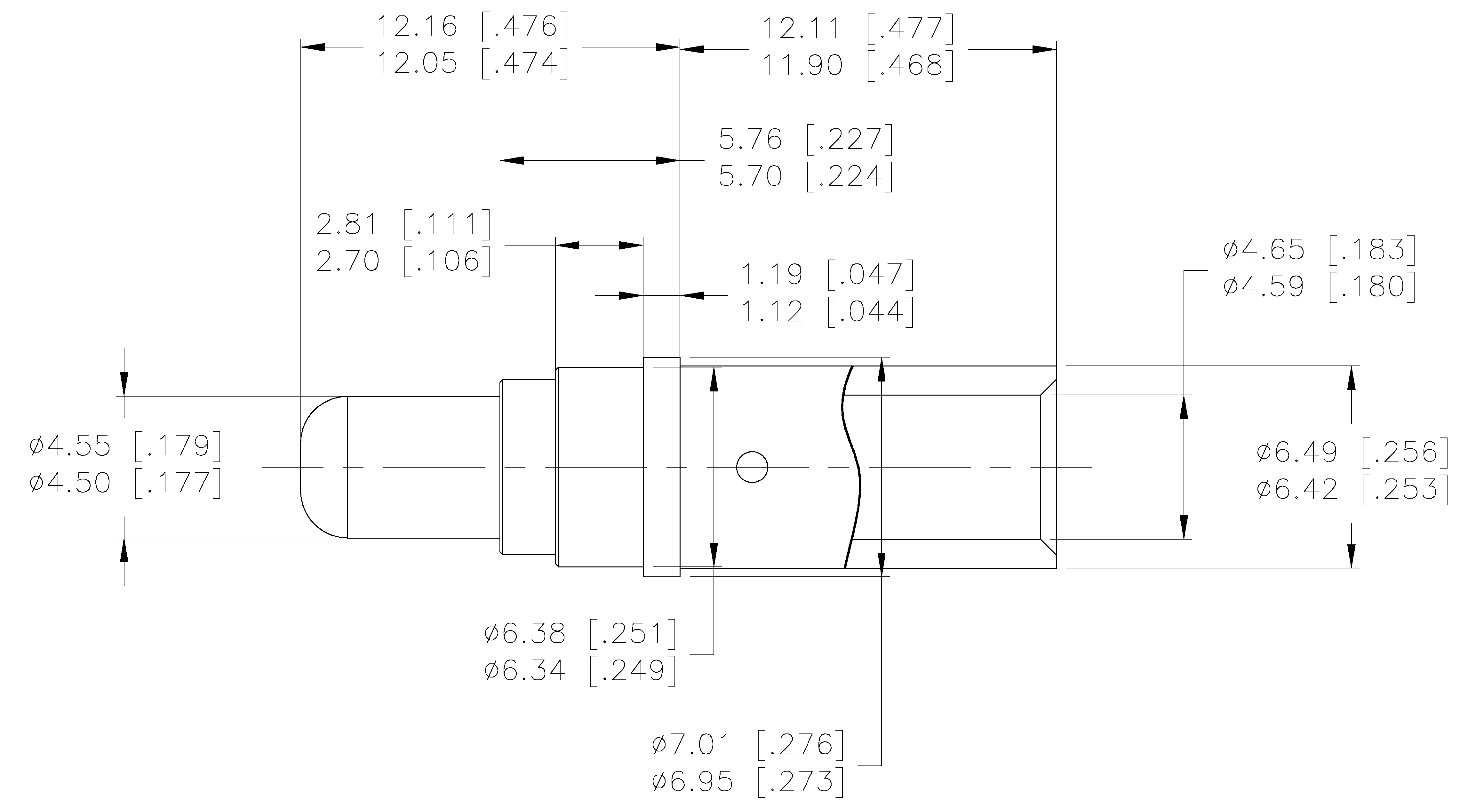
Contact us

Tel: +86-755-8981 8866 Fax: +86-755-8427 6832

Email & Skype: info@chipsmall.com Web: www.chipsmall.com

Address: A1208, Overseas Decoration Building, #122 Zhenhua RD., Futian, Shenzhen, China





- 1 COPPER ALLOY PER ASTM B301
- 2 1.27 μm [50 μin] MIN GOLD PER ASTM B488
 OVER 2.54 μm [100 μin] MIN NICKEL PER
 QQ-N-290 ON ENTIRE STOCK.
- 3. APPLICATION TOOLING:
 CRIMPING TOOL: M22520/23-01
 DIE SET: M22520/23-02
 LOCATOR: TYCO P/N 1738331-1
 EXTRACTION TOOL: M81969/28-01
- 4. WIRE ACCOMMODATED: 8 AWG
 STRIP LENGTH: 9.60 [.378] - 10.10 [.398]
- 5. THIS PRODUCT IS SOLD BY TYCO ELECTRONICS
 UNDER A LICENSE FROM RADIAL SA

PRELIMINARY
 NOT RELEASED FOR
 PRODUCTION

Tyco PN - 1738019-1

DIMENSIONS : mm [inch]

THIS DRAWING IS A CONTROLLED DOCUMENT.		DATE	22MAR2004	REV	0
DRAWN BY		CHK		Tyco Electronics Corporation Harrisburg, Pa 17105-3608	
DIMENSIONS:		APPROVED		POWER CONTACT, PIN, CRIMP TERMINATION SIZE 5 GPR	
mm [INCHES]		PRODUCT SPEC		APPLICATION SPEC	
TOLERANCES UNLESS OTHERWISE SPECIFIED:		WEIGHT		SCALE	
0 P.L.C.	± .005 [0.002]	CUSTOMER DRAWING		1:1	
1 P.L.C.	± .005 [0.002]				
2 P.L.C.	± .005 [0.002]				
3 P.L.C.	± .005 [0.002]				
4 P.L.C.	± .005 [0.002]				
ANGLES	± .005 [0.002]				
MATERIAL		FINISH			
CUSTOMER DRAWING					
SIZE		DATE CODE	DRAWING NO	RESTRICTED TO	
A0		00779	1738019	1 OF 1	
SHEET		1	1	REV 0	