



Chipsmall Limited consists of a professional team with an average of over 10 year of expertise in the distribution of electronic components. Based in Hongkong, we have already established firm and mutual-benefit business relationships with customers from,Europe,America and south Asia,supplying obsolete and hard-to-find components to meet their specific needs.

With the principle of “Quality Parts,Customers Priority,Honest Operation,and Considerate Service”,our business mainly focus on the distribution of electronic components. Line cards we deal with include Microchip,ALPS,ROHM,Xilinx,Pulse,ON,Everlight and Freescale. Main products comprise IC,Modules,Potentiometer,IC Socket,Relay,Connector.Our parts cover such applications as commercial,industrial, and automotives areas.

We are looking forward to setting up business relationship with you and hope to provide you with the best service and solution. Let us make a better world for our industry!



## Contact us

Tel: +86-755-8981 8866 Fax: +86-755-8427 6832

Email & Skype: info@chipsmall.com Web: www.chipsmall.com

Address: A1208, Overseas Decoration Building, #122 Zhenhua RD., Futian, Shenzhen, China



THIS DRAWING IS UNPUBLISHED.

RELEASED FOR PUBLICATION

2005

© COPYRIGHT 2005 BY -

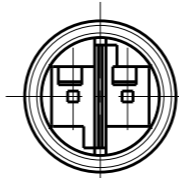
ALL RIGHTS RESERVED.

REVISIONS

P	LTR	DESCRIPTION	DATE	DWN	APVD
G		REVISED PER ECR-16-002347	22FEB2016	RS	JL
H		ECR-16-003641	11MAY2016	RS	JL
J		ECR-16-017348	24FEB2017	RK	JL
M		REVISED PER ECO-17-008502	17JUL2017	SK	JL

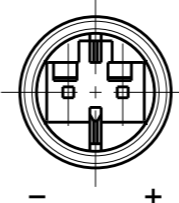
### HIGH-VOLTAGE

Keying HV-1



### LOW-VOLTAGE

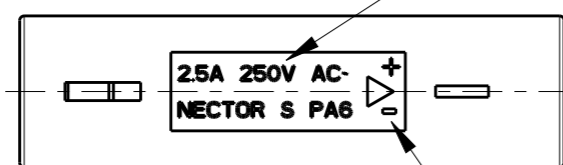
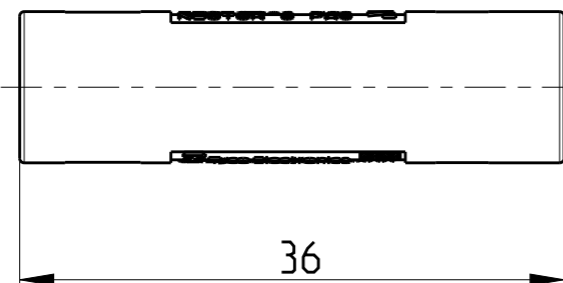
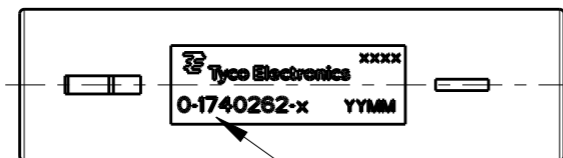
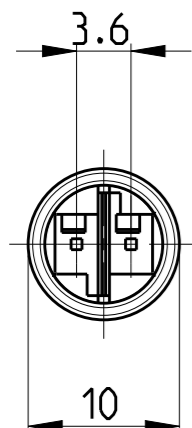
Keying LV-2



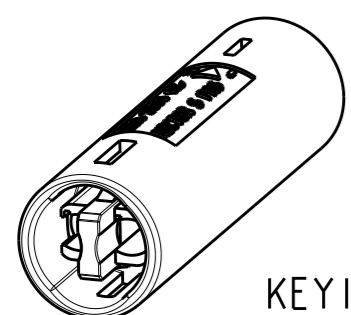
#### Notes:

1. cavities designed for MQS Pin contact PN 1740335-x
2. Counterpart is Plug PN 1740259-x and corresponding products of the NECTOR S family

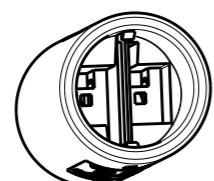
- △3 Polarity marking +/- only for DC version (Keying LV-2)
- △4 PN specific marking
- △5 OBSOLETED.



LV-2	LOW-VOLTAGE 125VAC/VDC	7A/125VAC/VDC	BLACK	0-1740451-3
LV-2	LOW-VOLTAGE 125VAC/VDC	7A/125VAC/VDC	YELLOW	0-1740451-2
LV-1	LOW-VOLTAGE 125VAC/VDC	7A/125VAC/VDC	LIGHT GREY	0-1740451-1
HV-3	HIGH-VOLTAGE 125V AC	6A/125V AC ~	BLUE	0-1740262-6
HV-1	HIGH-VOLTAGE 250V AC	2.5A/250V AC ~	BLACK (ANTHRACITE)	0-1740262-2
HV-1	HIGH-VOLTAGE 250V AC	2.5A/250V AC ~	NATURAL (WHITE)	0-1740262-1
Keying	REMARKS	Marking	COLOR	PN



KEYING HV-1 AS SHOWN



1:1

THIS DRAWING IS A CONTROLLED DOCUMENT.

<b>DIMENSIONS:</b> mm 	<b>TOLERANCES UNLESS OTHERWISE SPECIFIED:</b> 0 PLC ±0.2 1 PLC ±0.2 2 PLC ±0.2 3 PLC ± 4 PLC ± ANGLES ±1° <b>FINISH</b> -	DWN H.ATZMANN 07FEB2005 CHK M.OFENLOCH 07FEB2005 APVD T.GERLACH 07FEB2005			
		PRODUCT SPEC 108-94018 APPLICATION SPEC 114-18751 WEIGHT 2.2 g	NAME NECTOR S Connector System Outlet -		SIZE A3
MATERIAL PA 6	FINISH -	CUSTOMER DRAWING	SCALE 2:1	SHEET 1 OF 1	REV M