



Chipsmall Limited consists of a professional team with an average of over 10 year of expertise in the distribution of electronic components. Based in Hongkong, we have already established firm and mutual-benefit business relationships with customers from,Europe,America and south Asia,supplying obsolete and hard-to-find components to meet their specific needs.

With the principle of “Quality Parts,Customers Priority,Honest Operation,and Considerate Service”,our business mainly focus on the distribution of electronic components. Line cards we deal with include Microchip,ALPS,ROHM,Xilinx,Pulse,ON,Everlight and Freescale. Main products comprise IC,Modules,Potentiometer,IC Socket,Relay,Connector.Our parts cover such applications as commercial,industrial, and automotives areas.

We are looking forward to setting up business relationship with you and hope to provide you with the best service and solution. Let us make a better world for our industry!



## Contact us

Tel: +86-755-8981 8866 Fax: +86-755-8427 6832

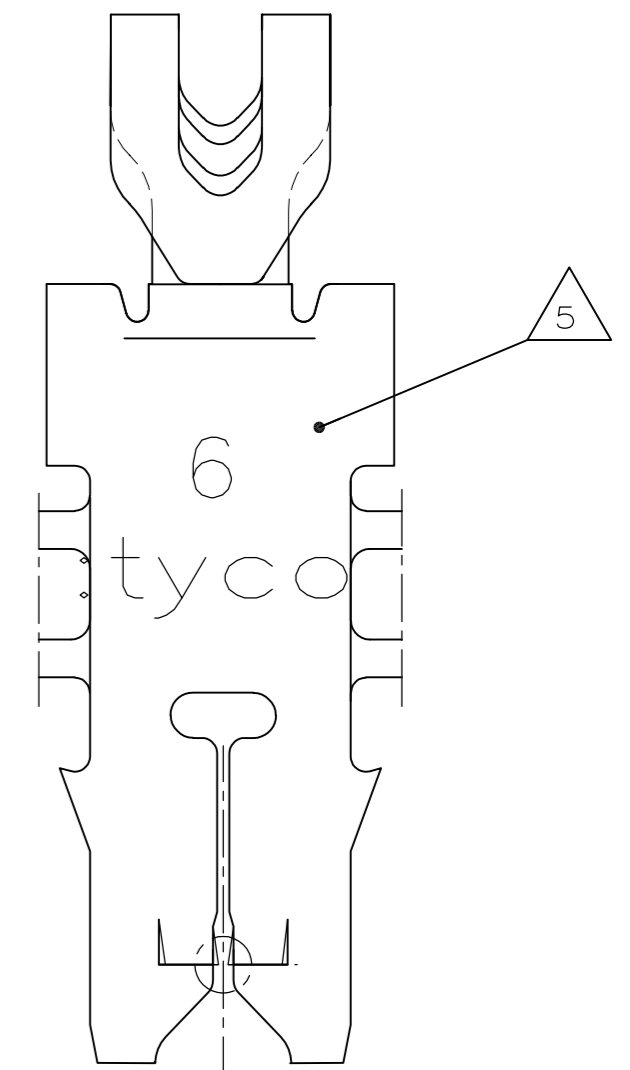
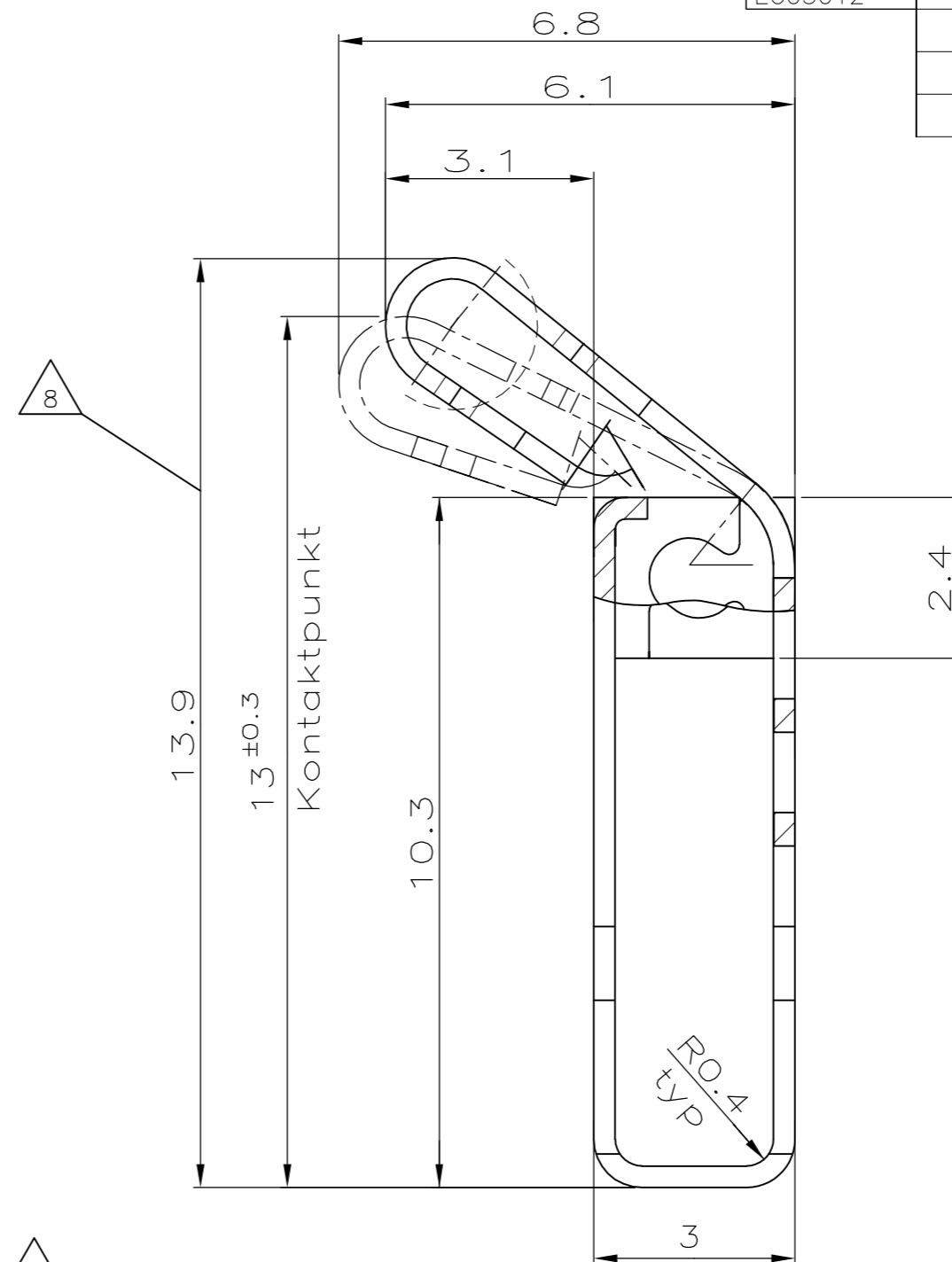
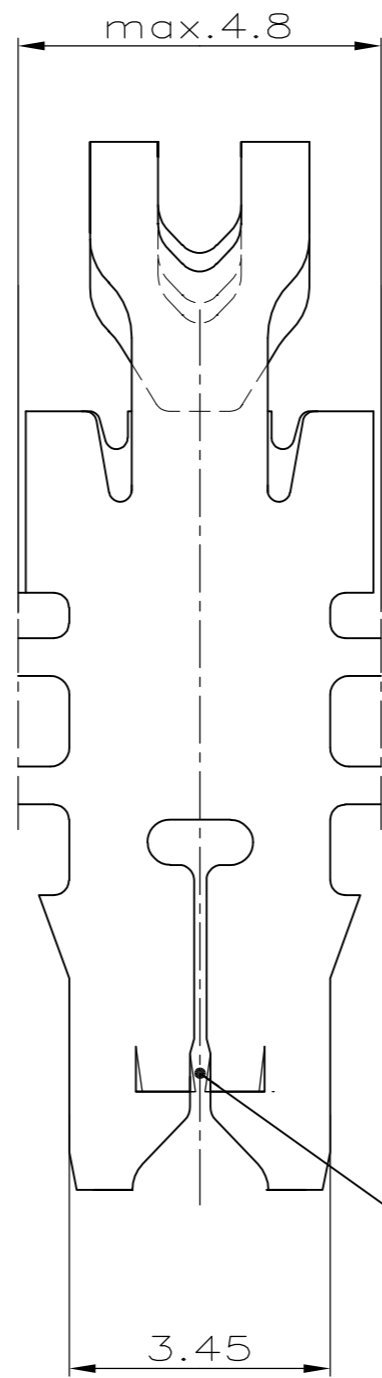
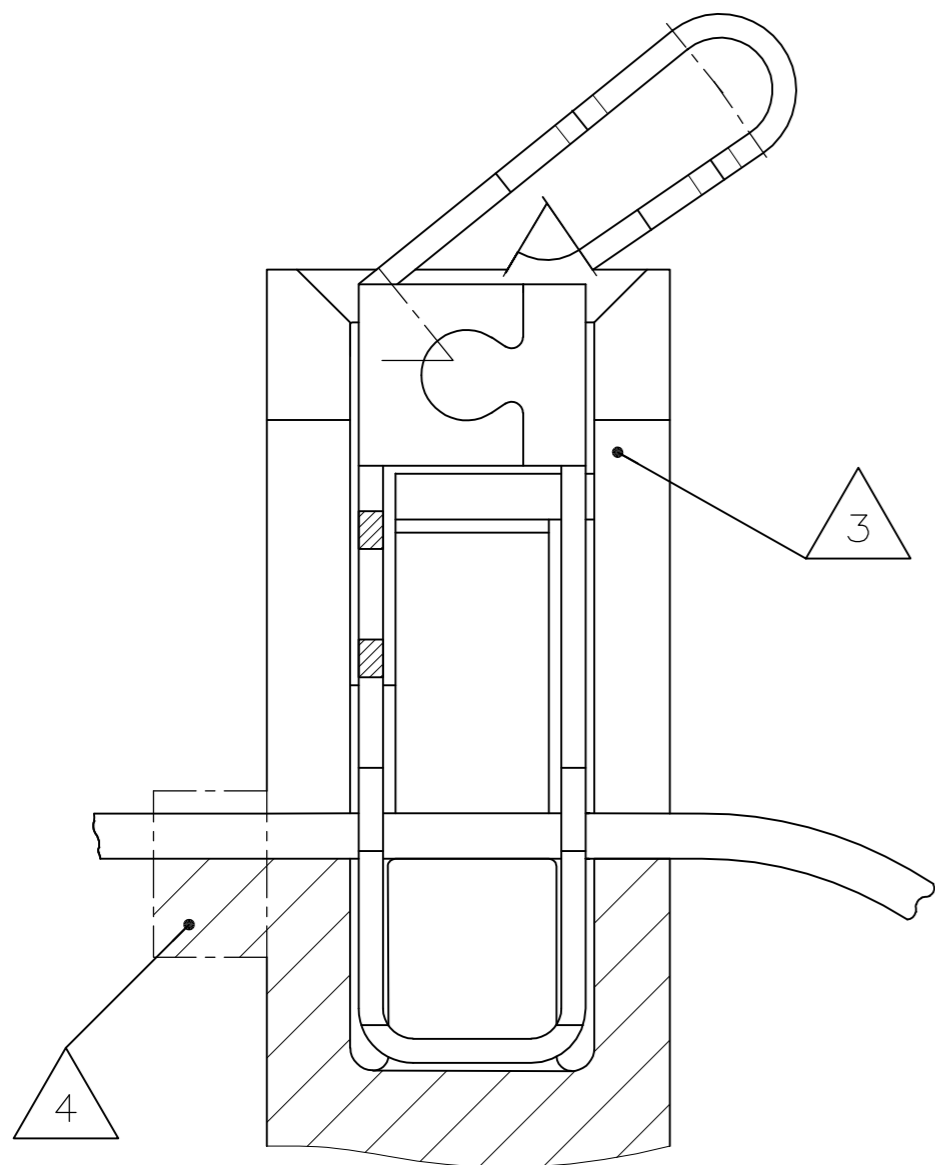
Email & Skype: info@chipsmall.com Web: www.chipsmall.com

Address: A1208, Overseas Decoration Building, #122 Zhenhua RD., Futian, Shenzhen, China

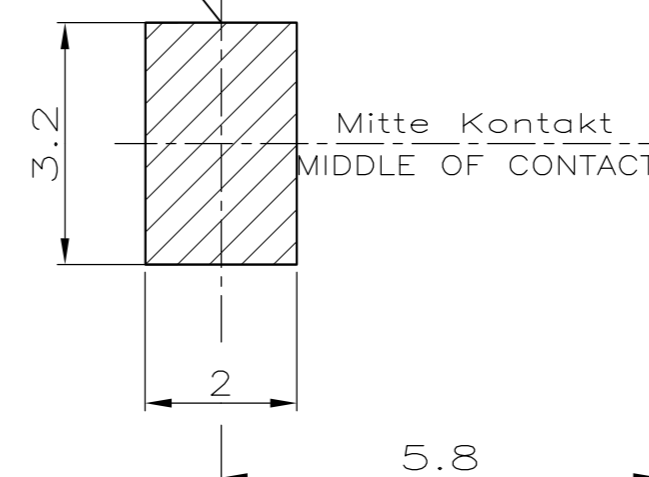
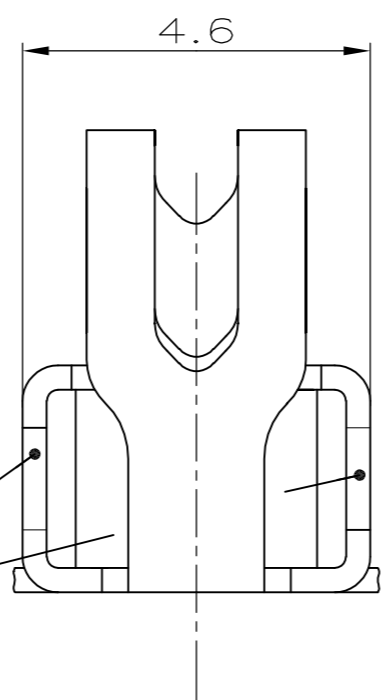


LOC	DIST	P	LTR	REVISIONS ÄNDERUNGEN DESCRIPTION BESCHREIBUNG	DATE	DWN	APVD
AI	-						
PROJEKT NR.: EG03012				-3 VERSION ADDED	27NOV2012	PKS	RRP

Kontakt im eingebauten Zustand  
 CONTACT IN ASSEMBLED CONDITION



Kontaktierungsflaeche  
 fuer aussenliegende Feder  
 CONNECTING AREA FOR THE  
 EXTENDED LEAF-SPRING



8

Federkennlinie SPRING CHARACTERISTIC			
Auslenkung Elongation von From	auf To	Rückstellung Spring return	Federkraft Spring force
13.9	13.4	-	Ca. 4N
13.9	12.7	13.8	Ca. 6,7N
13.9	12.4	13.6	Ca. 7,5N

- 7 max. Auflagefläche für Stromübertragung zum Verbacken 2.4mm<sup>2</sup>  
max. CONTACT AREA FOR POWERTRANSMISSION TO CONNECT 2.4mm<sup>2</sup>
- 6. Material 0.32mm dick  
STOCK THICKNESS 0.32mm
- 5 Kennziffer für Drahtgrößenbereich (6)  
IDENTIFICATION NO. FOR MAGNET WIRE RANGE (6)
- 4 Bereich wird beim Kontaktieren abgetrennt.  
AREA WILL BE CUTTED BY TERMINATION.
- 3 Kammer nach Zchnng. 96-52884-70 Rev. 1  
CAVITY ACCORDING DWG. 96-52884-70 Rev.1
- 2. Einsatz Temperatur inkl. Stromerwärmung 120°C  
Kurzzeitig (max. 10 min.) 140°C  
WORKING TEMPERATURE INCL. POWER HEATING 120°C  
SHORT TIME (max. 10min.) 140°C
- 1 Kontakt geeignet für:  
Lackdraht, Einzeldraht oder zwei Draehre mit gleichem Durchmesser ø0.265...0.4mm  
SLOT ACCEPTS:  
SINGLE OR DOUBLE MAGNET WIRE  
SAME DIAMETERS 0.265...0.4mm DIA

9 PRELIMINARY PART NOT RELEASED FOR PRODUCTION

CUSTOMER PART NO	AMP PART NO	REV.	PCS.	MATERIAL	SURFACE COLOR	DESCRIPTION	ITEM NO
-	-	-	-	-	-	-	-
-	1740698-3	1	-	CuNiSi	TIN PLATED	MAG-MATE TERMINAL	-
-	1740698-2	A	-	CuNiSi	PRETINNED	MAG-MATE TERMINAL	-

THIS DRAWING IS A CONTROLLED DOCUMENT FOR TE INCORPORATED.  
 IT IS SUBJECT TO CHANGE AND THE CONTROLLING ENGINEERING ORGANIZATION SHOULD BE CONTACTED FOR THE LATEST REVISION.  
 DIESES ZEICHNUNGSDOKUMENT WIRD DURCH TE INCORPORATED KONTROLLIERT.  
 ÄNDERUNGEN, DIE DEM TECHNISCHEN FORTSCHRITT DIENEN, SIND VORBEHALTEN.  
 DEN JEWELNS LETZTUEBLIGEN ÄNDERUNGSSTAND ERFAHREN SIE AUF ANFRAGE.

DIMENSIONS: mm  
 TOLERANCES UNLESS OTHERWISE SPECIFIED:  
 ALLGEMEINTOLERANZEN  
 n. ISO 2768 - mH - E  
 n. DIN 16901 - 140

0 PLC ±0.2  
 1 PLC ±0.1  
 2 PLC ±0.1  
 3 PLC ±0.1

ANGLES / WINKEL ±  
 FINISH / OBERFLAECHE / FARBE

DWN H.Ballmert 30.05.06  
 CHK S.Skade 30.05.06

APVD -  
 NAME -

PRODUCT SPEC  
 PRODUKTSPEZ.

APPLICATION SPEC  
 VERARBEITUNGSSPEZ.

WEIGHT  
 GEWICHT -

CUSTOMER DRAWING / KUNDENZEICHNUNG

MASSSTAB 10:1  
 BLATT 1 VON 1  
 REV AI

**STE** TE Connectivity

MAG-MATE TERMINAL  
 MIT AUßENLIEGENDER KONTAKTFEDER

SIZE A2  
 CAGE CODE 00779  
 DRAWING NO. ZEICHNUNGS-NR. C=1740698  
 RESTRICTED TO NUR FUER