



Chipsmall Limited consists of a professional team with an average of over 10 year of expertise in the distribution of electronic components. Based in Hongkong, we have already established firm and mutual-benefit business relationships with customers from,Europe,America and south Asia,supplying obsolete and hard-to-find components to meet their specific needs.

With the principle of "Quality Parts,Customers Priority,Honest Operation,and Considerate Service",our business mainly focus on the distribution of electronic components. Line cards we deal with include Microchip,ALPS,ROHM,Xilinx,Pulse,ON,Everlight and Freescale. Main products comprise IC,Modules,Potentiometer,IC Socket,Relay,Connector.Our parts cover such applications as commercial,industrial, and automotives areas.

We are looking forward to setting up business relationship with you and hope to provide you with the best service and solution. Let us make a better world for our industry!



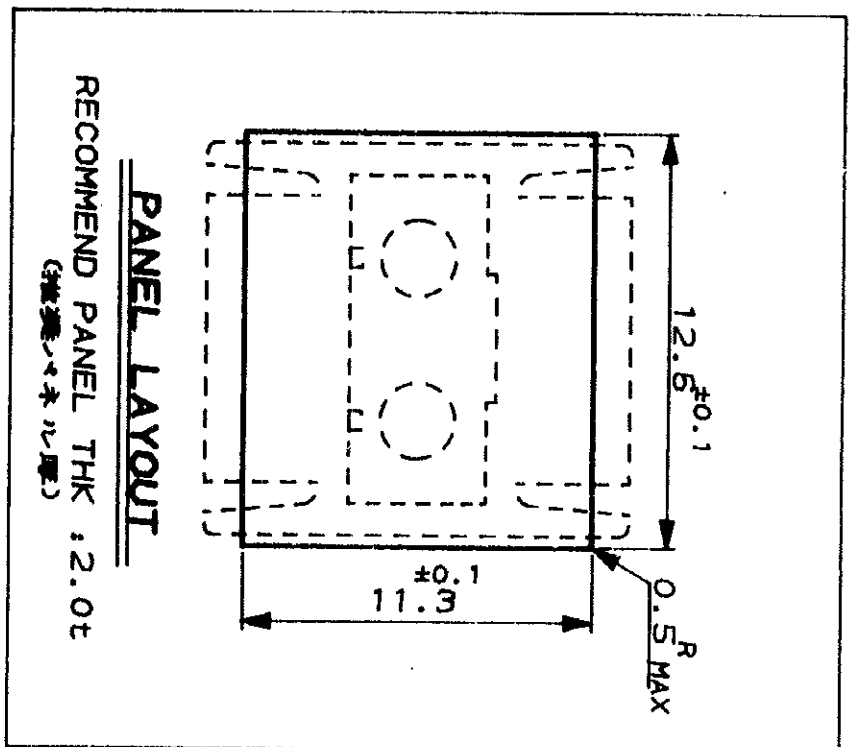
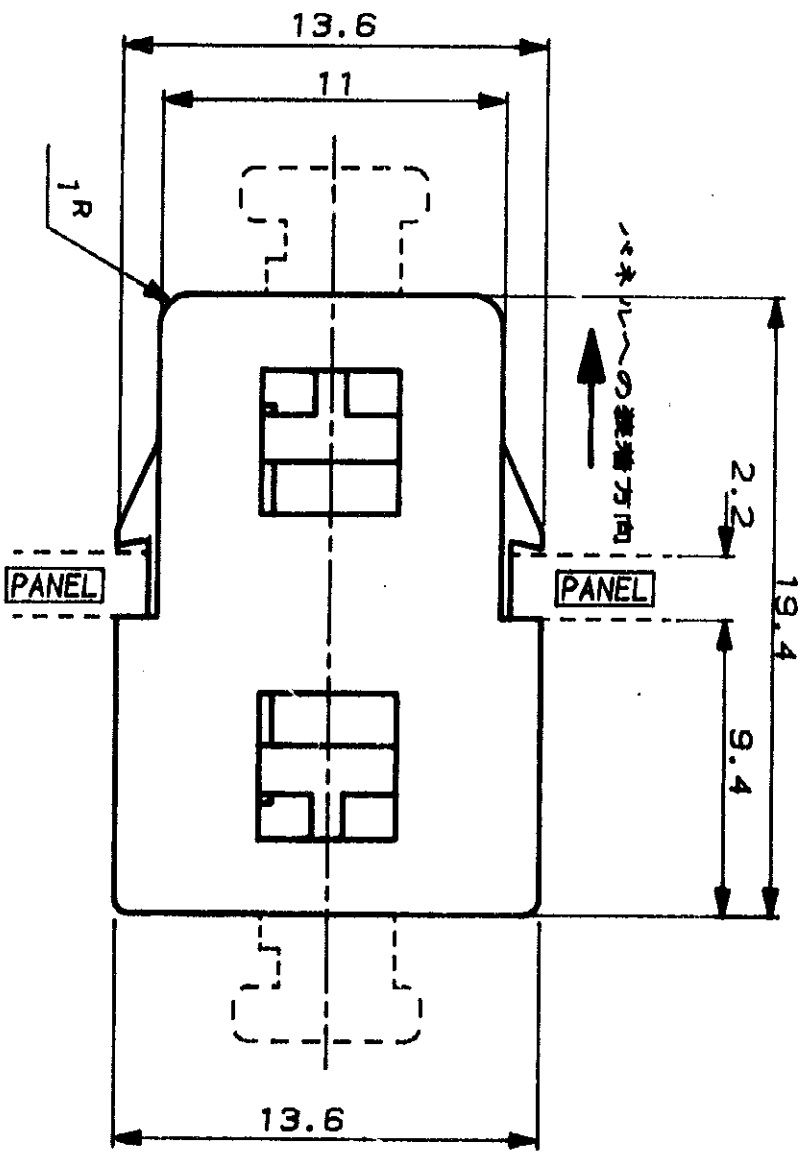
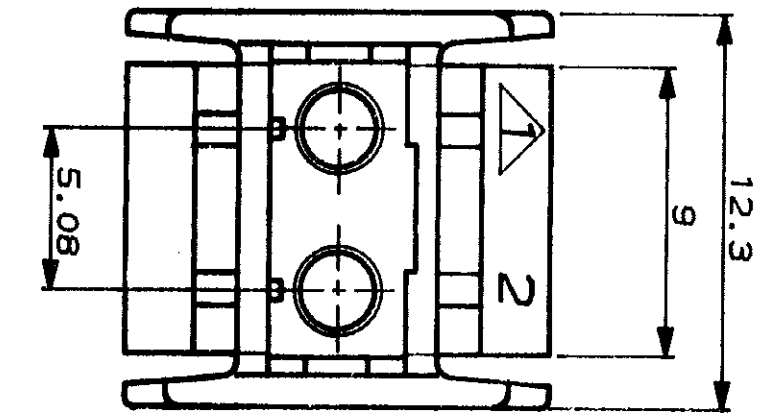
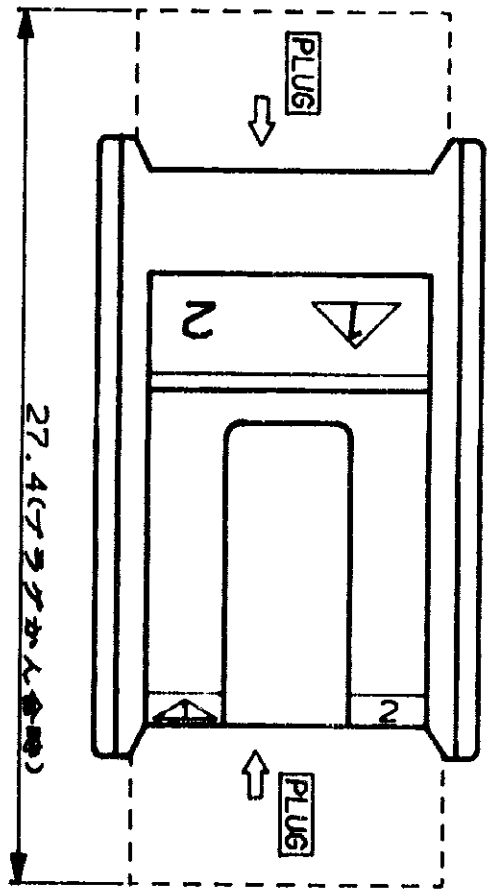
## Contact us

Tel: +86-755-8981 8866 Fax: +86-755-8427 6832

Email & Skype: info@chipsmall.com Web: www.chipsmall.com

Address: A1208, Overseas Decoration Building, #122 Zhenhua RD., Futian, Shenzhen, China





NOTE, 1. MATING PLUG ASS'Y. 174132

-1:AS SHOWN

LTR	0	RELEASED	1989	DR	ST	CHK	DATE
		REVISION RECORD					

WIRE RANGE	AMP (AWG - )	INSULATION DIA	NAME
MATERIAL	UL 94V-0 THERMOPLASTIC	COLOR	BLACK
DR.	Z. YASHIDA 1986	APP.	Z. YASHIDA 1986
CHK.	Shirayama	CHK.	Shirayama

GENERAL TOLERANCE	0-6K : 10	10-6K : 20	6-10K : 30	10-6K : 40	6-10K : 50	ANGLES : 25	
SIZE	A3	LOC	J	NUMBER	174137	SCALE	4-1
REV.	0	SHEET	1	OF	1		

© 1985 BY AMP (JAPAN) LTD.  
ALL RIGHTS RESERVED.  
AMP PRODUCTS COVERED BY PATENTS  
AND OR PATENTS PENDING

**AMP** AMP (JAPAN), LTD.  
Tokyo, Japan

**DUPLEX SPLICE BUSHING**  
AMP OPTIMATE MINI-DNP CONN.

CUSTOMER DRAWING