



Chipsmall Limited consists of a professional team with an average of over 10 year of expertise in the distribution of electronic components. Based in Hongkong, we have already established firm and mutual-benefit business relationships with customers from,Europe,America and south Asia,supplying obsolete and hard-to-find components to meet their specific needs.

With the principle of “Quality Parts,Customers Priority,Honest Operation,and Considerate Service”,our business mainly focus on the distribution of electronic components. Line cards we deal with include Microchip,ALPS,ROHM,Xilinx,Pulse,ON,Everlight and Freescale. Main products comprise IC,Modules,Potentiometer,IC Socket,Relay,Connector.Our parts cover such applications as commercial,industrial, and automotives areas.

We are looking forward to setting up business relationship with you and hope to provide you with the best service and solution. Let us make a better world for our industry!



Contact us

Tel: +86-755-8981 8866 Fax: +86-755-8427 6832

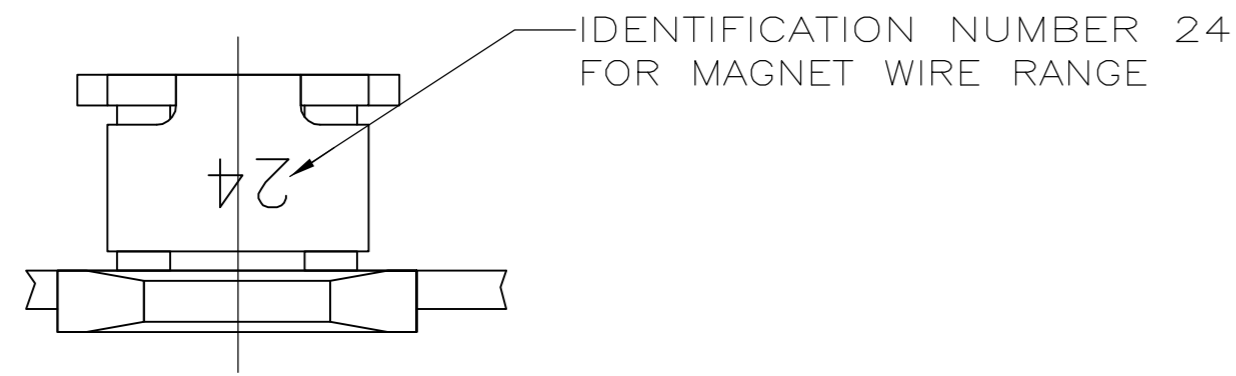
Email & Skype: info@chipsmall.com Web: www.chipsmall.com

Address: A1208, Overseas Decoration Building, #122 Zhenhua RD., Futian, Shenzhen, China

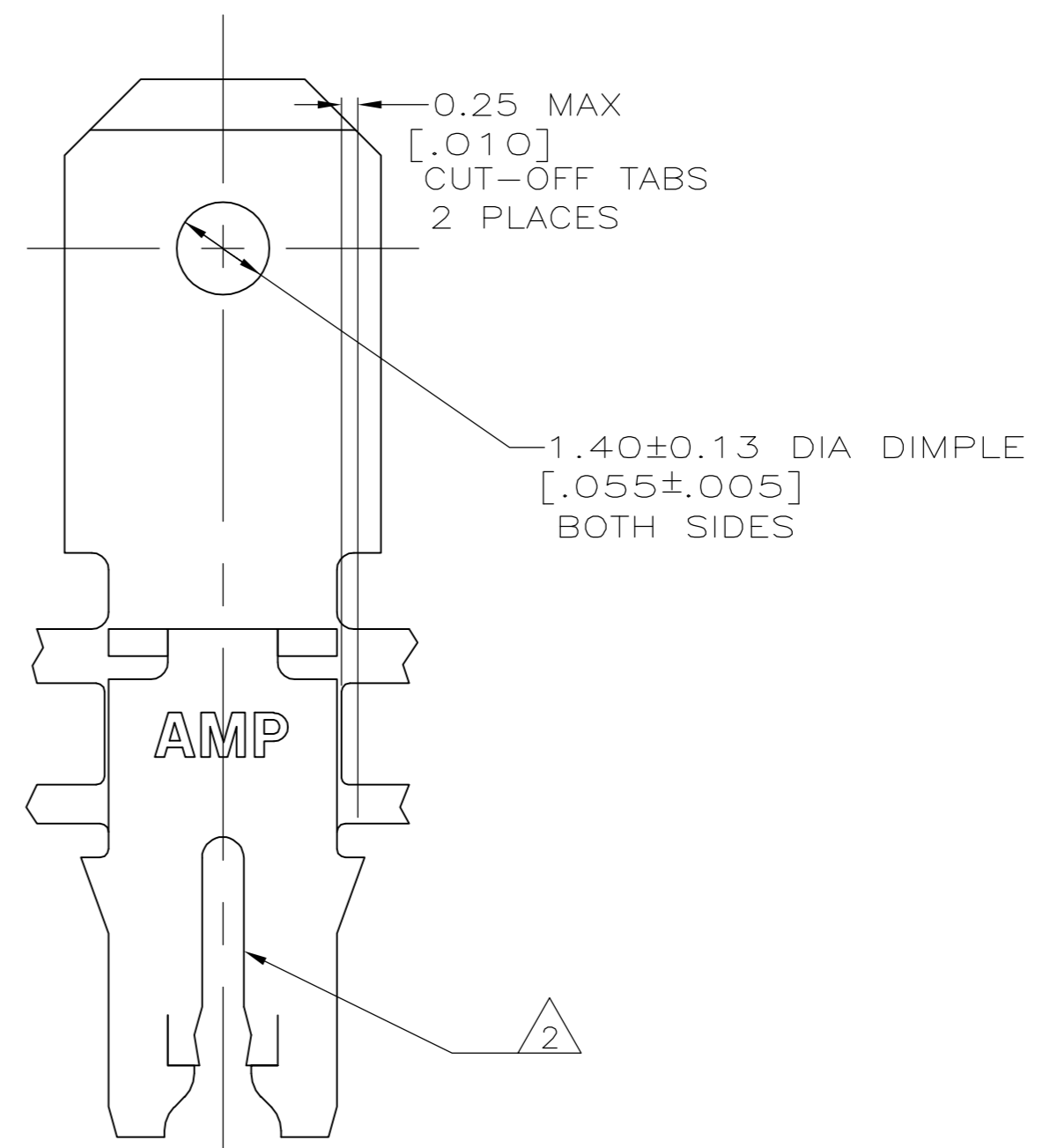
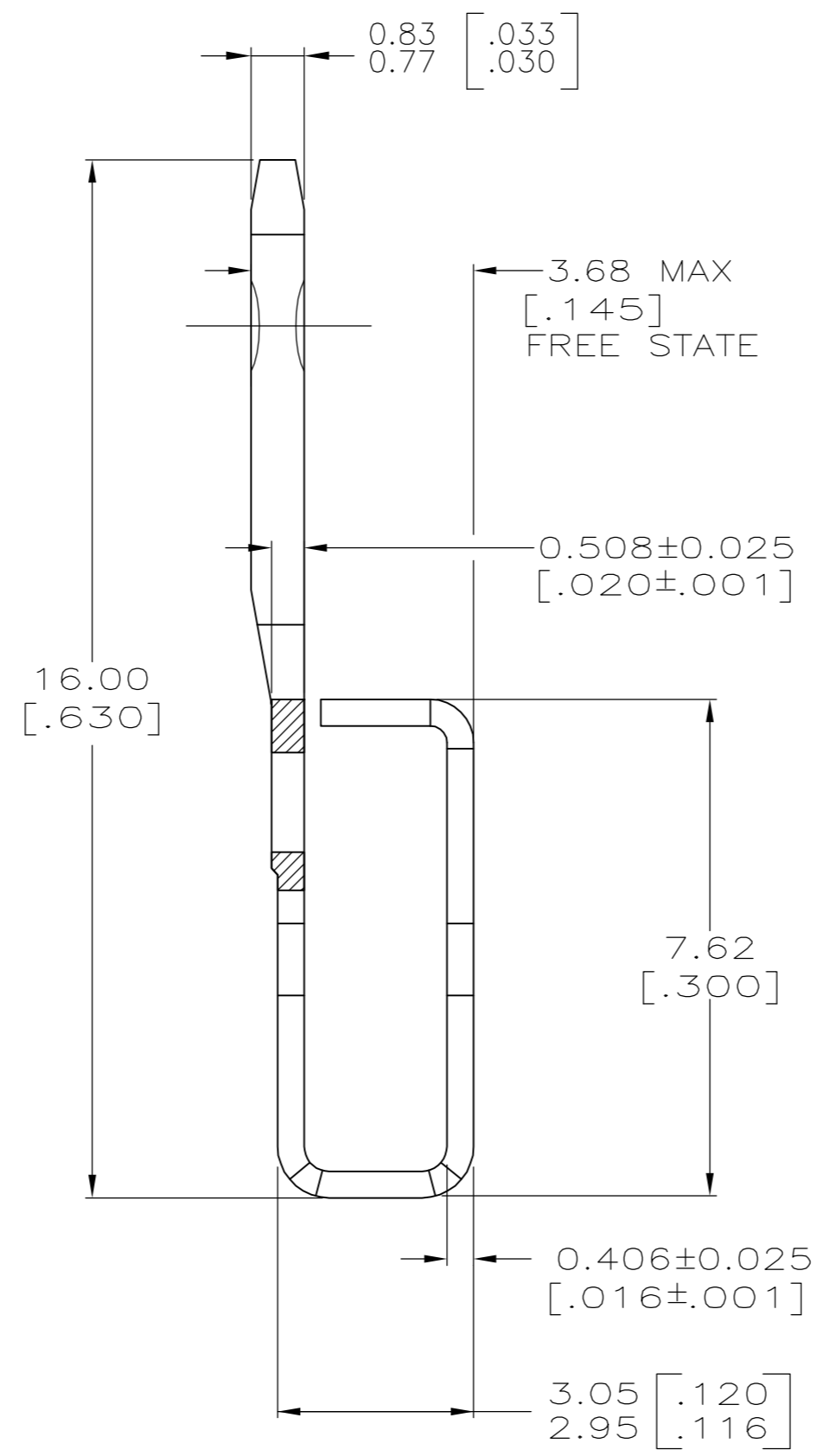
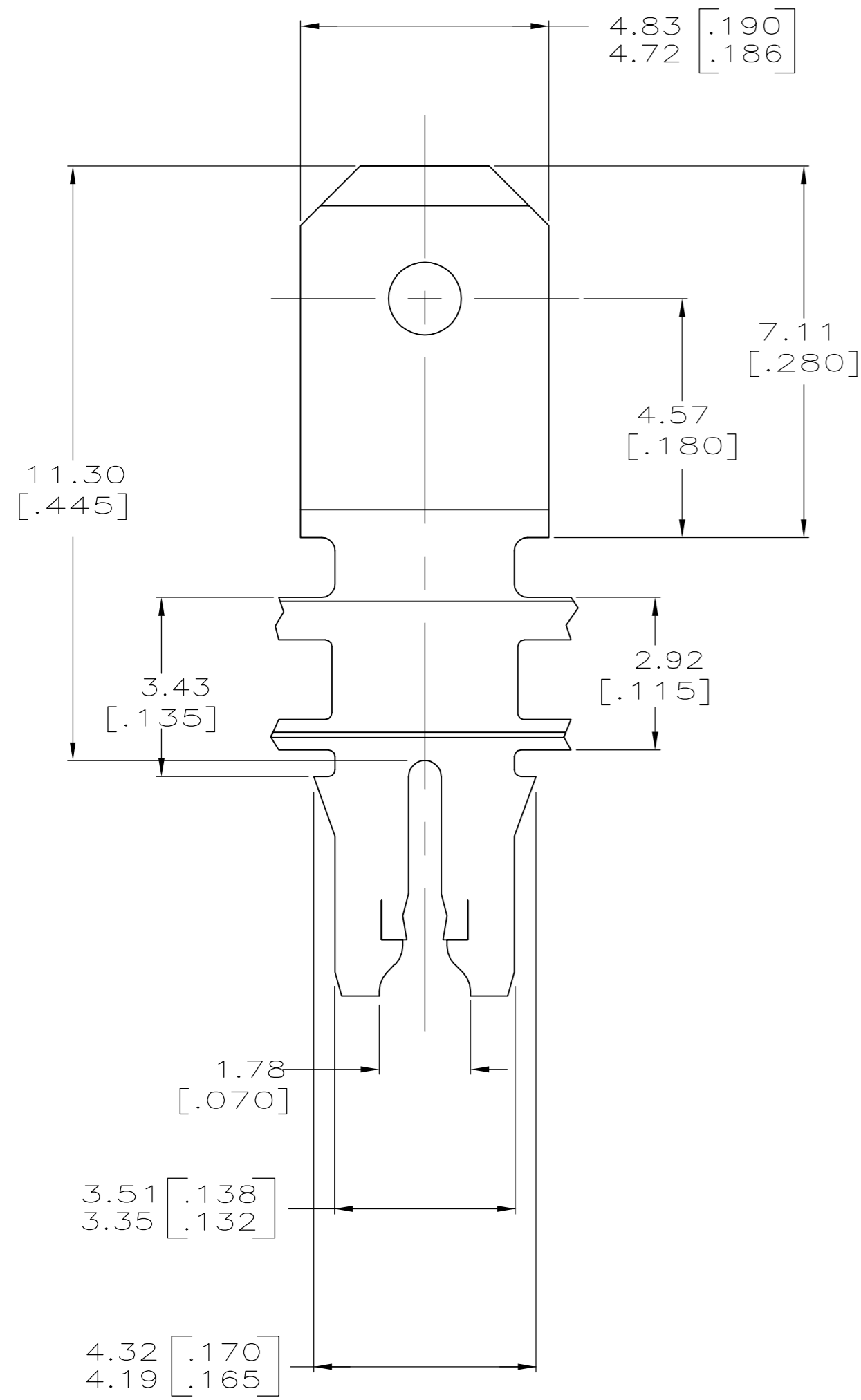


THIS DRAWING IS UNPUBLISHED. RELEASED FOR PUBLICATION
 © COPYRIGHT BY TYCO ELECTRONICS CORPORATION. ALL RIGHTS RESERVED.

LOC		DIST		REVISIONS			
P	LTR	DESCRIPTION		DATE	DWN	APVD	
	B	REVISED PER ECR-06-010412		02NOV06	HMR	KR	



- 1 CONTINUOUS STRIP ON REELS WITH TERMINALS LOCATED ON 5.59±0.08 [.220±.003] CENTERS.
- 2 SLOT TERMINATES A SINGLE MAGNET WIRE ONLY. COPPER REANGE: 0.91-1.15mm [#19-#17] AWG.
- 3 AFTER INSERTION INTO PLASTIC HOLDER TAB PORTION MUST BE BENT OVER 45° TO 90° OR POTTED-IN TO PREVENT PULL-OUT WHEN MATING RECEPTACLE IS DISCONNECTED.
- 4 PREPRODUCTION - FASR REQUIRED



1742035-1
PART NUMBER

THIS DRAWING IS A CONTROLLED DOCUMENT.		DWN 09DEC2003 MICHAEL S. FEHER	tyco Tyco Electronics Corporation	
DIMENSIONS: mm [INCHES]		CHK 09DEC2003 KURT A. RANDOLPH	Harrisburg, PA 17105-3608	
TOLERANCES UNLESS OTHERWISE SPECIFIED:		APVD 09DEC2003 KURT A. RANDOLPH	NAME	
0 PLC ± -		PRODUCT SPEC	TERMINAL, TAB,	
1 PLC ± -		APPLICATION SPEC	4.75[.187] FASTON,™	
2 PLC ± 0.25[.010]		114-2046	300 SERIES MAG-MATE™	
3 PLC ± -		WEIGHT	SIZE	CAGE CODE
4 PLC ± -		FINISH	A2	00779
ANGLES ± -		0.002032[.000080]	DRAWING NO	
MIN TIN PLATE		MIN TIN PLATE	C=1742035	
MATERIAL		CUSTOMER DRAWING		RESTRICTED TO
O82 PRE-MILLED BRASS		SCALE 10:1		REV B