



Chipsmall Limited consists of a professional team with an average of over 10 year of expertise in the distribution of electronic components. Based in Hongkong, we have already established firm and mutual-benefit business relationships with customers from,Europe,America and south Asia,supplying obsolete and hard-to-find components to meet their specific needs.

With the principle of “Quality Parts,Customers Priority,Honest Operation,and Considerate Service”,our business mainly focus on the distribution of electronic components. Line cards we deal with include Microchip,ALPS,ROHM,Xilinx,Pulse,ON,Everlight and Freescale. Main products comprise IC,Modules,Potentiometer,IC Socket,Relay,Connector.Our parts cover such applications as commercial,industrial, and automotives areas.

We are looking forward to setting up business relationship with you and hope to provide you with the best service and solution. Let us make a better world for our industry!



Contact us

Tel: +86-755-8981 8866 Fax: +86-755-8427 6832

Email & Skype: info@chipsmall.com Web: www.chipsmall.com

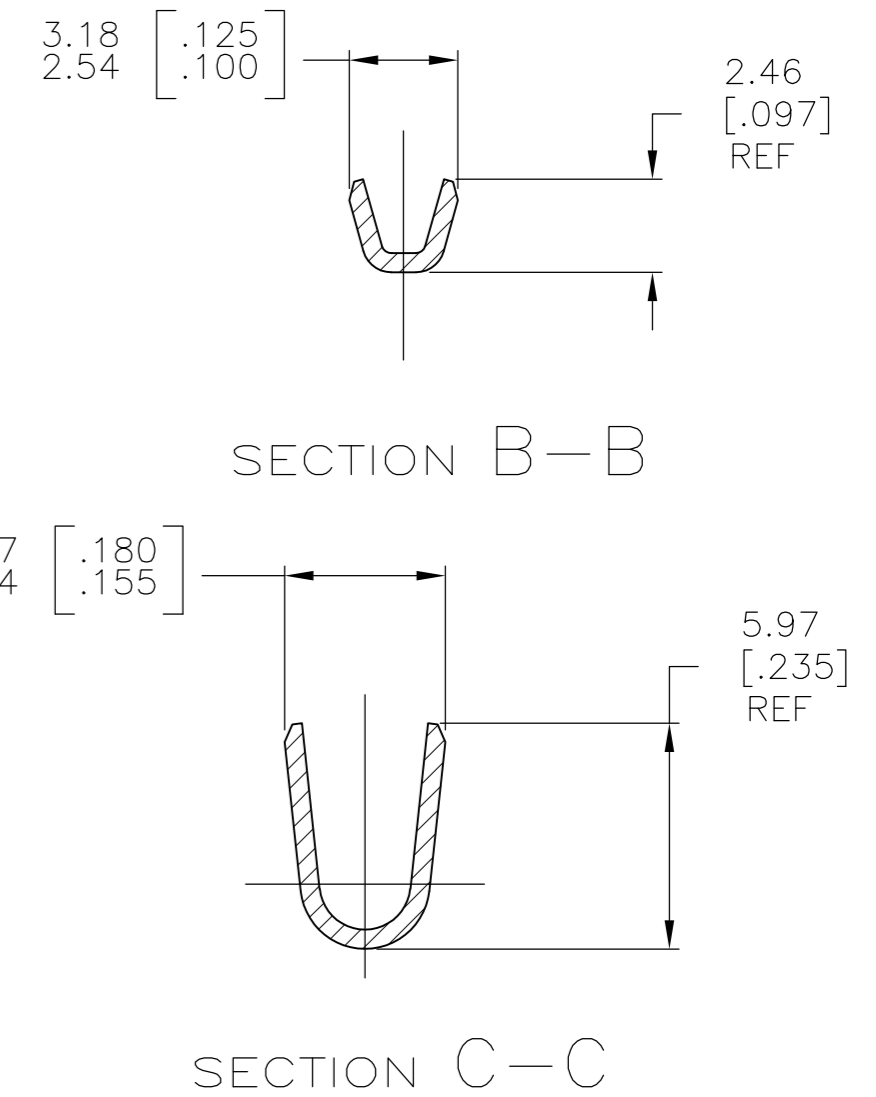
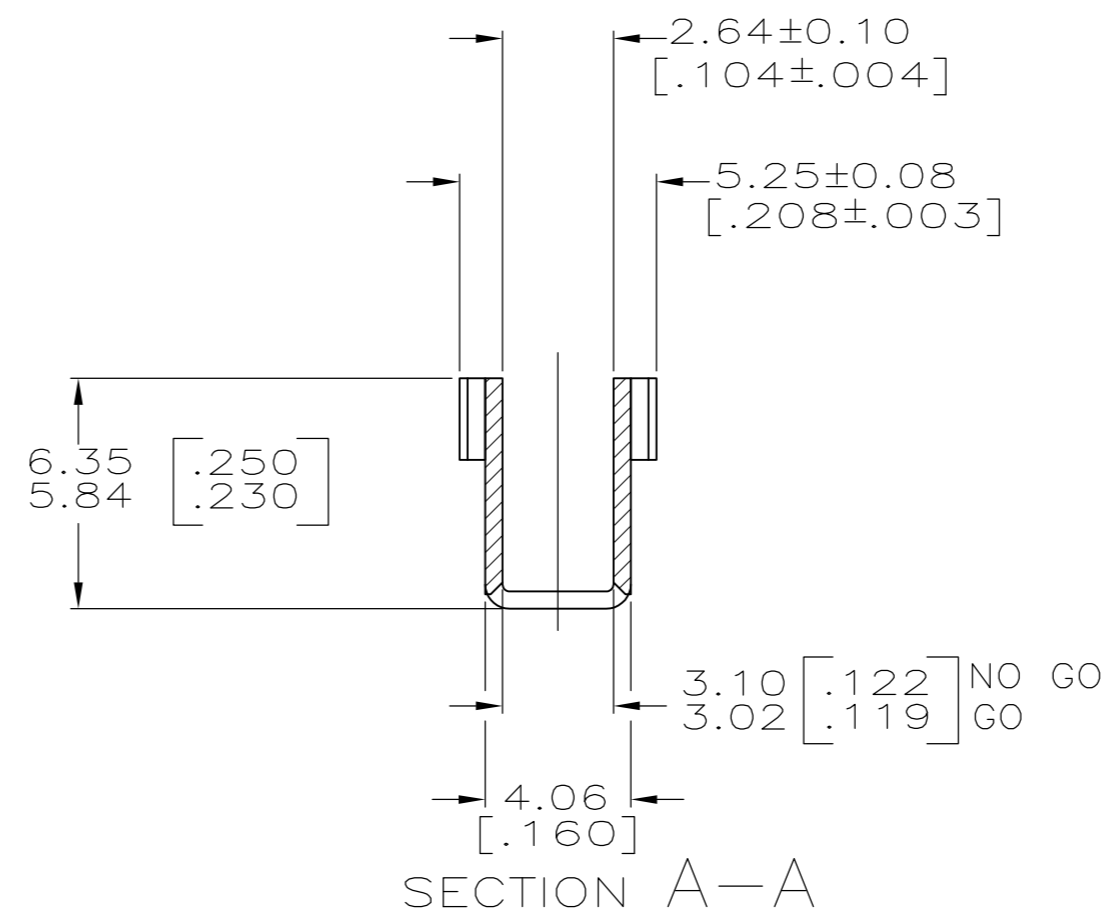
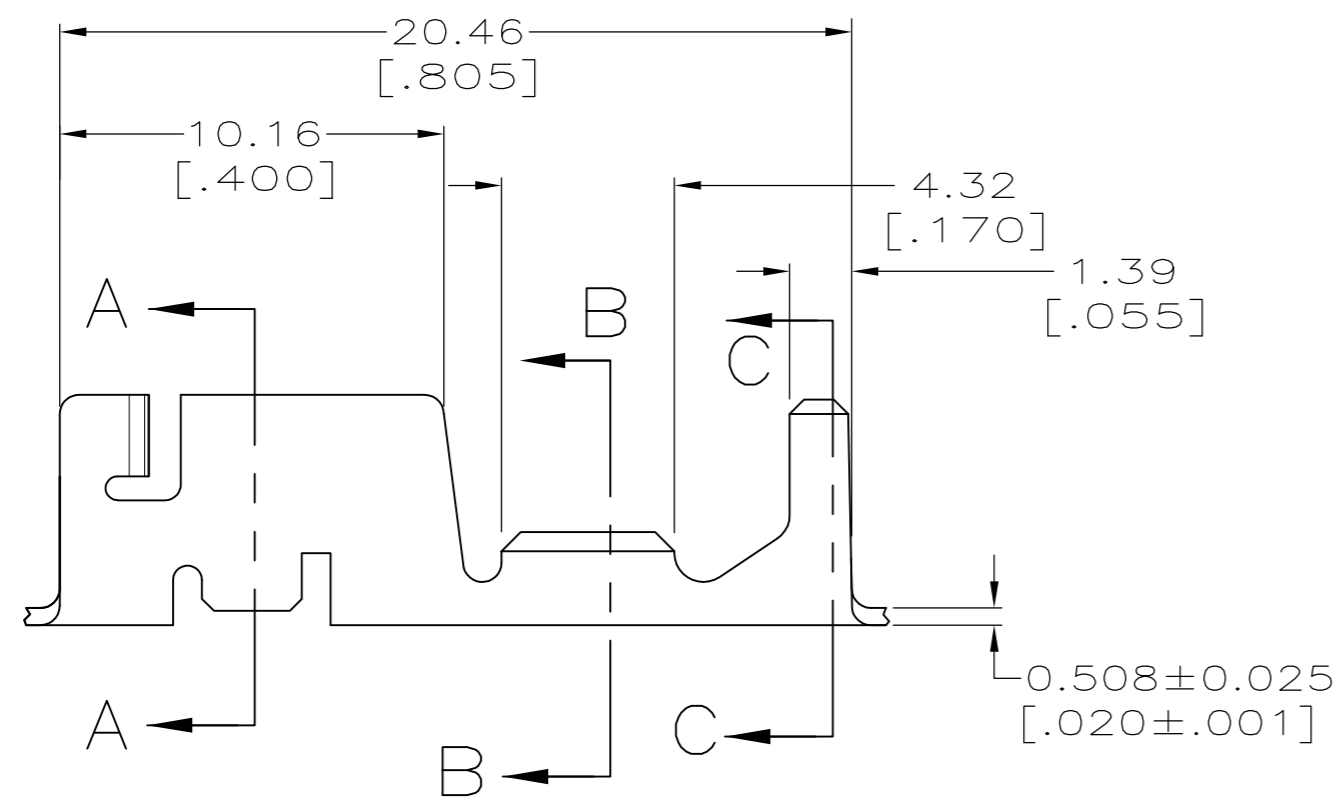
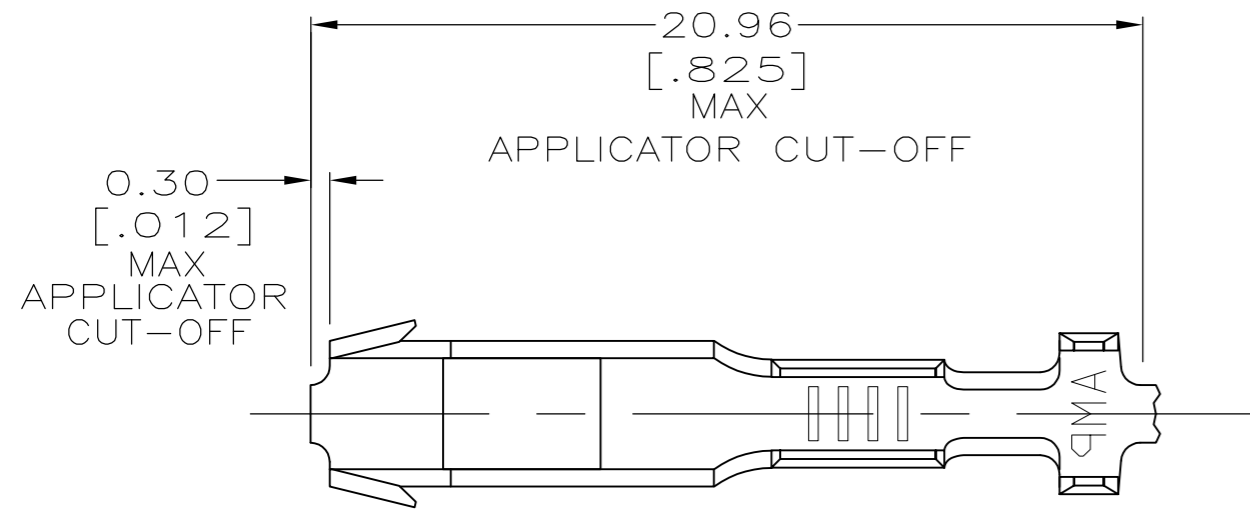
Address: A1208, Overseas Decoration Building, #122 Zhenhua RD., Futian, Shenzhen, China



THIS DRAWING IS UNPUBLISHED. RELEASED FOR PUBLICATION
 © COPYRIGHT - By - ALL RIGHTS RESERVED.

LOC	DIST	REVISIONS					
		P	LTR	DESCRIPTION	DATE	DWN	APVD
AF	50	B		REVISED PER ECR-12-016352	16NOV12	KH	GJ

- 1 CONTINUOUS STRIP ON REELS WITH TERMINALS LOCATED ON 22.61 [.890] CENTERS.
- 2 WIRE RANGE: 0.32-0.82mm² [#22-#18] AWG, OR (2) 0.32mm² [#22] AWG.
- 3 INSULATION RANGE: 2.79 [.110] MAX DIA OR (2) 2.29 [.090] MAX DIA.
- 4 CONNECTING 2 X 0.32mm² [#22 AWG] REQUIRES THE WIRES TO BE PLACED VERTICALLY IN THE CRIMP BARRELS.



WIRE SIZE	HEIGHT ±0.051 [±.002]	WIDTH	TYPE	STRIP LENGTH ±0.38 [±.015]	WIDTH	TYPE
0.75mm ² [#18 AWG]	1.52 [.060]	2.29 [.090]	F	6.22 [.245]	3.56 [.140]	F OR O
2 X 0.32mm ² [2X#22 AWG]	1.47 [.058]					
0.50mm ² [#20 AWG]	1.42 [.056]					
0.32mm ² [#22 AWG]	1.35 [.053]					
		WIRE BARREL CRIMP			INSULATION BARREL CRIMP	

FINISH	MATERIAL	PART NUMBER
POST TIN	H03 TIN-BRASS	1742657-1

THIS DRAWING IS A CONTROLLED DOCUMENT.		DWN M.S. FEHER 16NOV2007		TE Connectivity		
DIMENSIONS: mm [INCHES]		CHK G.D. PORTA 16NOV2007		NAME RECEPTACLE, CLUSTER PIN, 3.18 [.125] DIA		
TOLERANCES UNLESS OTHERWISE SPECIFIED:		APVD G.D. PORTA 16NOV2007		PRODUCT SPEC 108-2008		
0 PLC ± -		APPLICATION SPEC 114-2019		SIZE A2 CAGE CODE 00779 DRAWING NO C=1742657		
1 PLC ± -		WEIGHT -	SCALE 5:1		SHEET 1 of 1	
2 PLC ± 0.25 [.010]		CUSTOMER DRAWING	REV B			
3 PLC ± -						
4 PLC ± -						
ANGLES ± -						
FINISH SEE TABLE						