



Chipsmall Limited consists of a professional team with an average of over 10 year of expertise in the distribution of electronic components. Based in Hongkong, we have already established firm and mutual-benefit business relationships with customers from,Europe,America and south Asia,supplying obsolete and hard-to-find components to meet their specific needs.

With the principle of “Quality Parts,Customers Priority,Honest Operation,and Considerate Service”,our business mainly focus on the distribution of electronic components. Line cards we deal with include Microchip,ALPS,ROHM,Xilinx,Pulse,ON,Everlight and Freescale. Main products comprise IC,Modules,Potentiometer,IC Socket,Relay,Connector.Our parts cover such applications as commercial,industrial, and automotives areas.

We are looking forward to setting up business relationship with you and hope to provide you with the best service and solution. Let us make a better world for our industry!



Contact us

Tel: +86-755-8981 8866 Fax: +86-755-8427 6832

Email & Skype: info@chipsmall.com Web: www.chipsmall.com

Address: A1208, Overseas Decoration Building, #122 Zhenhua RD., Futian, Shenzhen, China

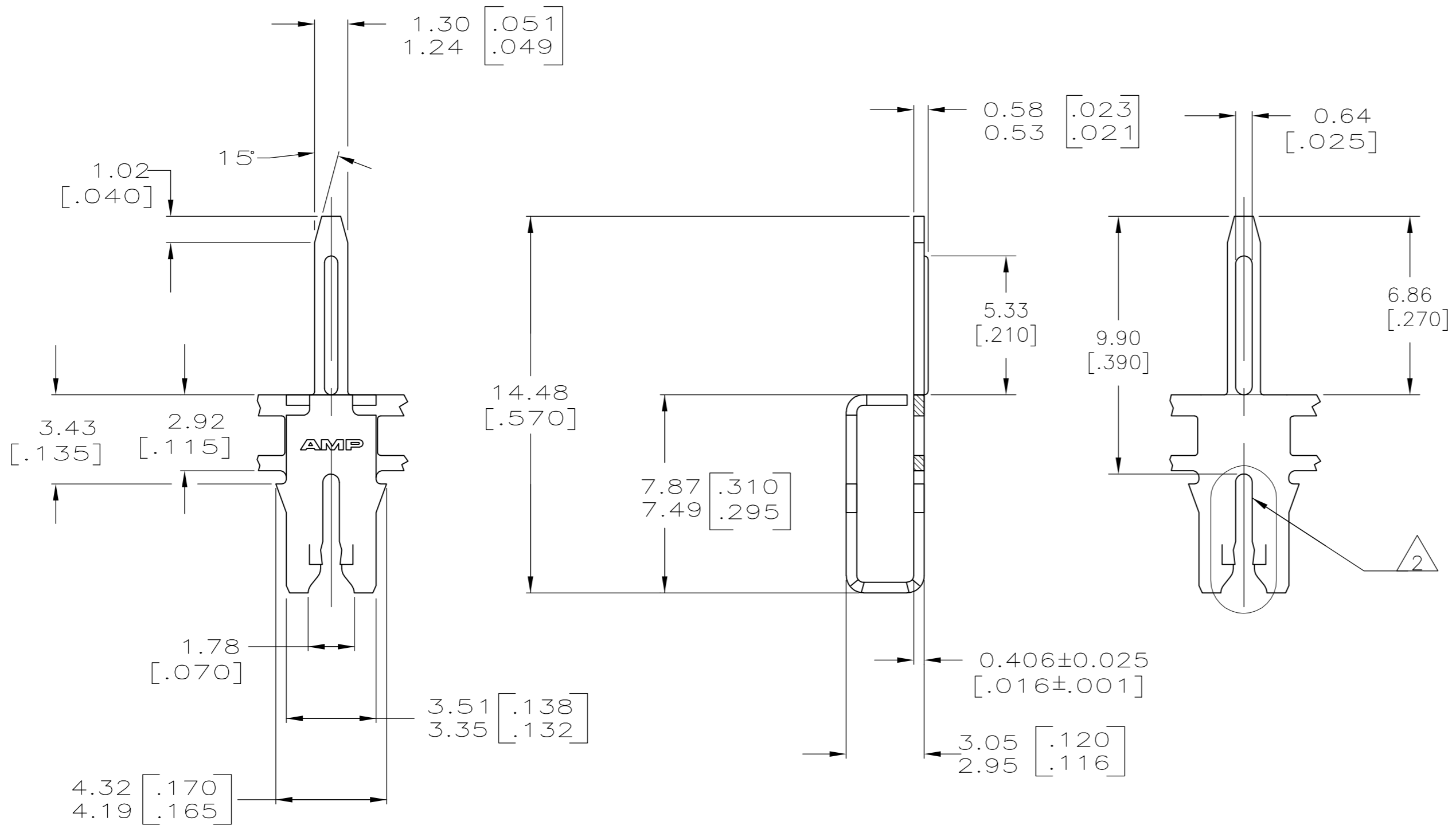
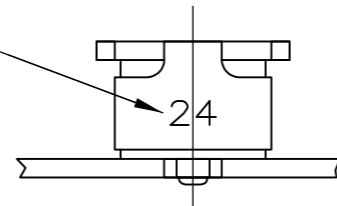


THIS DRAWING IS UNPUBLISHED. RELEASED FOR PUBLICATION
 © COPYRIGHT - By - ALL RIGHTS RESERVED.

LOC	DIST	REVISIONS			
P	LTR	DESCRIPTION	DATE	DWN	APVD
AF	50	B1	ECR-15-005665	10AUG2015	BDA/PKS

- 1 CONTINUOUS STRIP ON REELS WITH TERMINALS LOCATED ON 5.59 [.220] CENTERS.
- 2 SLOT TERMINATES A SINGLE COPPER MAGNET WIRE ONLY. COPPER RANGE: 0.91-1.15mm [#19-#17] AWG. ALUMINUM RANGE: 0.95-1.15mm [#18.5-#17] AWG. ALUMINUM WIRE RANGE APPLIES FOR POST-TIN PLATED VERSIONS ONLY.
- 3 TIN OVER NICKEL UNDERPLATE

IDENTIFICATION NUMBER 24 FOR MAGNET WIRE RANGE



1742708-1
PART NUMBER

THIS DRAWING IS A CONTROLLED DOCUMENT.		DWN	JR RUTH	24NOV08	TE TE Connectivity	
DIMENSIONS: mm [INCHES]		CHK	KURT RANDOLPH	24NOV08		
TOLERANCES UNLESS OTHERWISE SPECIFIED:		APVD	KURT RANDOLPH	24NOV08	NAME	
0 PLC ± -		PRODUCT SPEC		POST, SOLDER, MAG-MATE		
1 PLC ± -		108-2012		-		
2 PLC ± 0.25 [.010]		APPLICATION SPEC		SIZE		
3 PLC ± -		114-2046		CAGE CODE		
4 PLC ± -		WEIGHT		DRAWING NO		
ANGLES ± 1°		CUSTOMER DRAWING		A2 00779 C=1742708		
MATERIAL 4M BRASS		FINISH		RESTRICTED TO		
3		SCALE 6:1		SHEET 1 OF 1		
		REV B1				