



Chipsmall Limited consists of a professional team with an average of over 10 year of expertise in the distribution of electronic components. Based in Hongkong, we have already established firm and mutual-benefit business relationships with customers from,Europe,America and south Asia,supplying obsolete and hard-to-find components to meet their specific needs.

With the principle of “Quality Parts,Customers Priority,Honest Operation,and Considerate Service”,our business mainly focus on the distribution of electronic components. Line cards we deal with include Microchip,ALPS,ROHM,Xilinx,Pulse,ON,Everlight and Freescale. Main products comprise IC,Modules,Potentiometer,IC Socket,Relay,Connector.Our parts cover such applications as commercial,industrial, and automotives areas.

We are looking forward to setting up business relationship with you and hope to provide you with the best service and solution. Let us make a better world for our industry!



## Contact us

Tel: +86-755-8981 8866 Fax: +86-755-8427 6832

Email & Skype: info@chipsmall.com Web: www.chipsmall.com

Address: A1208, Overseas Decoration Building, #122 Zhenhua RD., Futian, Shenzhen, China



THIS DRAWING IS UNPUBLISHED.

RELEASED FOR PUBLICATION

ALL RIGHTS RESERVED.

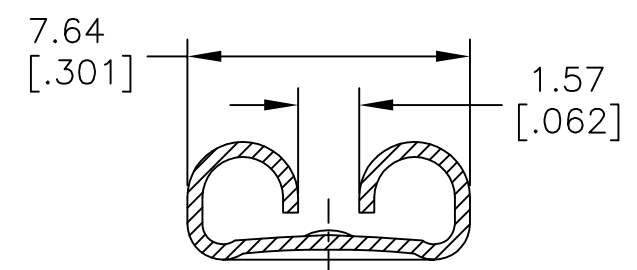
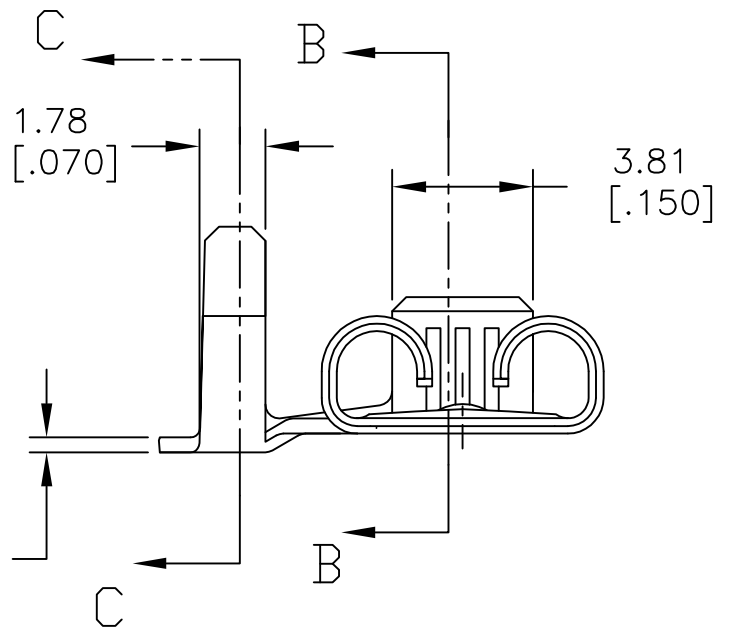
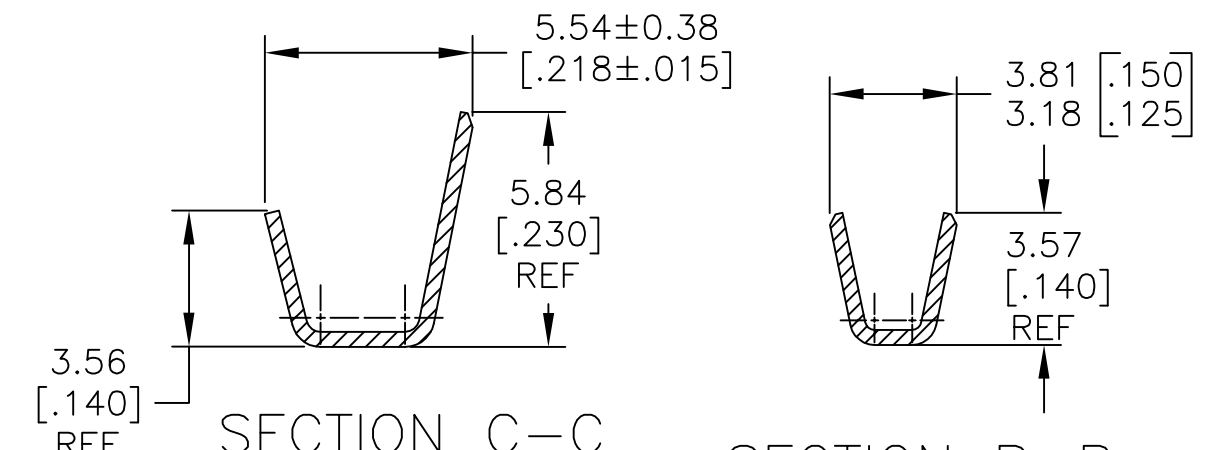
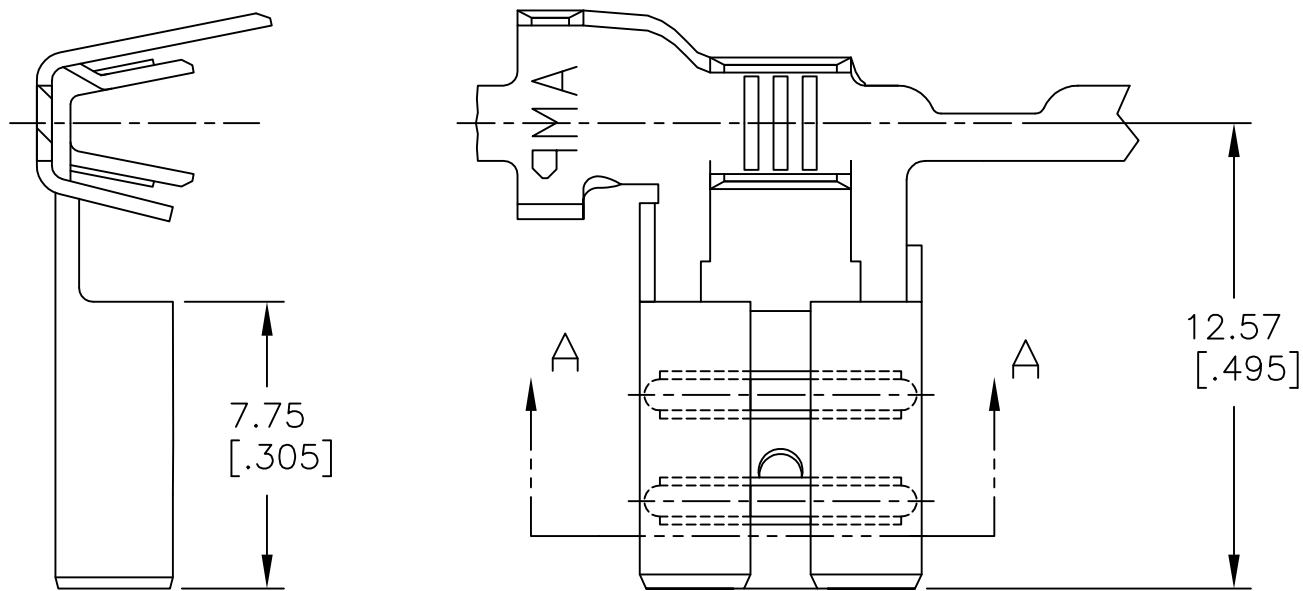
© COPYRIGHT - By -

REVISIONS

P	LTR	DESCRIPTION	DATE	DWN	APVD
	A3	REVISED PER ECR-16-012674	11SEP2016	BW	RS

- CONTINUOUS STRIP ON REELS.
- WIRE SIZE #18-#14 AWG.
- INSULATION DIA 2.79-4.06 [.110-.160].
- MATING TAB THK IS  $0.81 \pm 0.025$  [.032±.001]
- RECEPTACLE IS DESIGNED TO OPTIMIZE MATING AND UNMATING FORCES ON A TAB WITH A RETENTION HOLE. VALUES MAY VARY ON A TAB WITH A DETENT.

△ WITH STRESS RELIEF PROCESS.



TIN PLATE	△ 1742999-3
TIN PLATE	1742999-2
-----	1742999-1
FINISH	PART NO.

$0.41 \pm 0.025$  [.016±.001]

THIS DRAWING IS A CONTROLLED DOCUMENT.		DWN	JR RUTH	30NOV2012	<b>STE</b> TE Connectivity	
		CHK	PETE DESANTIS	30NOV12		
DIMENSIONS: mm[INCHES]		TOLERANCES UNLESS OTHERWISE SPECIFIED:		NAME		
0 PLC ± -		1 PLC ± -		RECEPTACLE, FLAG FASTON, .250 SERIES		
2 PLC ± 0.25[.010]		3 PLC ± -		PRODUCT SPEC		
3 PLC ± -		4 PLC ± -		APPLICATION SPEC		
4 PLC ± -		ANGLES ± -		SIZE		
MATERIAL		FINISH		CAGE CODE		
BRASS		SEE TABLE		DRAWING NO		
				RESTRICTED TO		
				A3 00779 C=1742999		
				SCALE 5:1 SHEET 1 OF 1 REV A3		
				CUSTOMER DRAWING		