



Chipsmall Limited consists of a professional team with an average of over 10 year of expertise in the distribution of electronic components. Based in Hongkong, we have already established firm and mutual-benefit business relationships with customers from,Europe,America and south Asia,supplying obsolete and hard-to-find components to meet their specific needs.

With the principle of “Quality Parts,Customers Priority,Honest Operation,and Considerate Service”,our business mainly focus on the distribution of electronic components. Line cards we deal with include Microchip,ALPS,ROHM,Xilinx,Pulse,ON,Everlight and Freescale. Main products comprise IC,Modules,Potentiometer,IC Socket,Relay,Connector.Our parts cover such applications as commercial,industrial, and automotives areas.

We are looking forward to setting up business relationship with you and hope to provide you with the best service and solution. Let us make a better world for our industry!



## Contact us

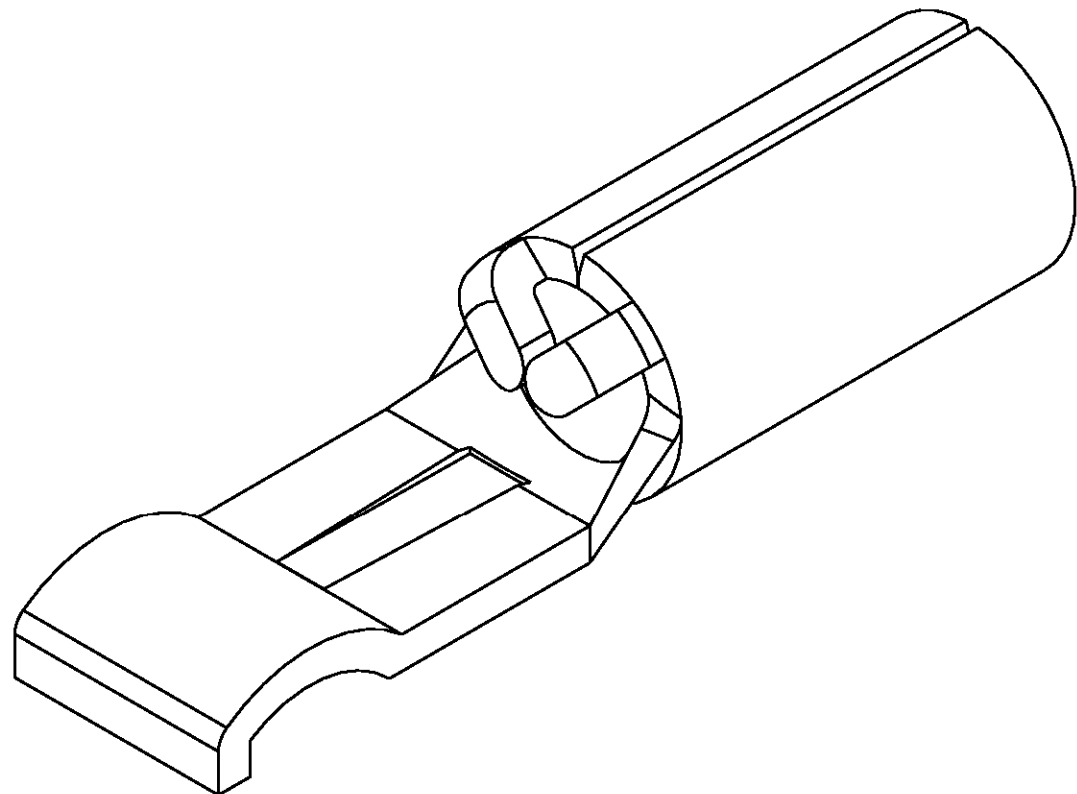
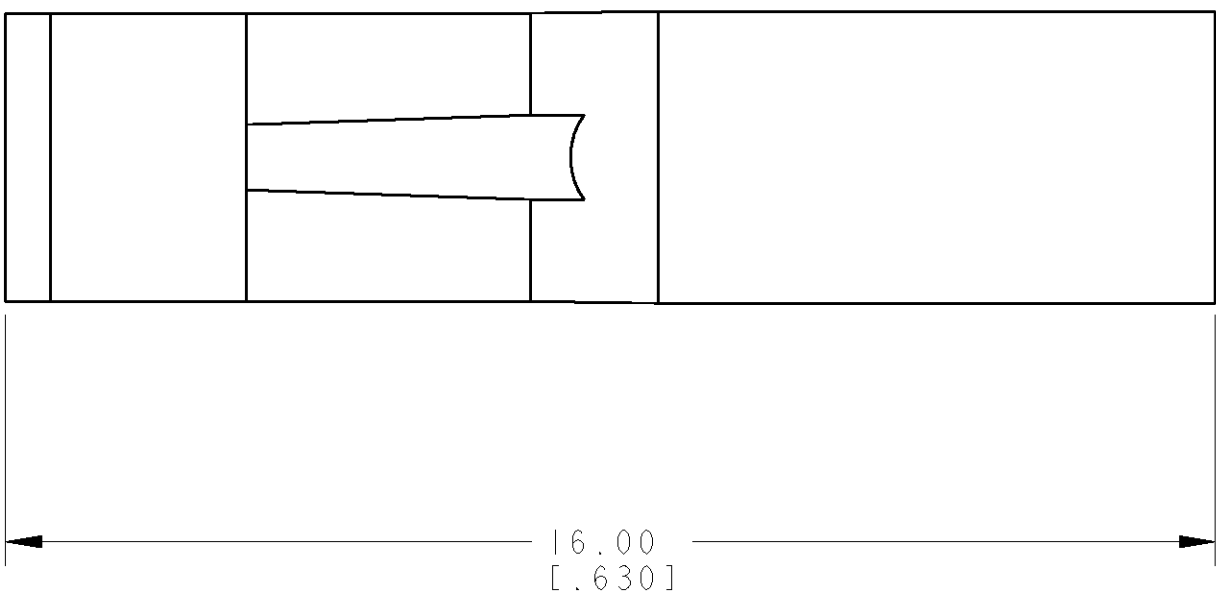
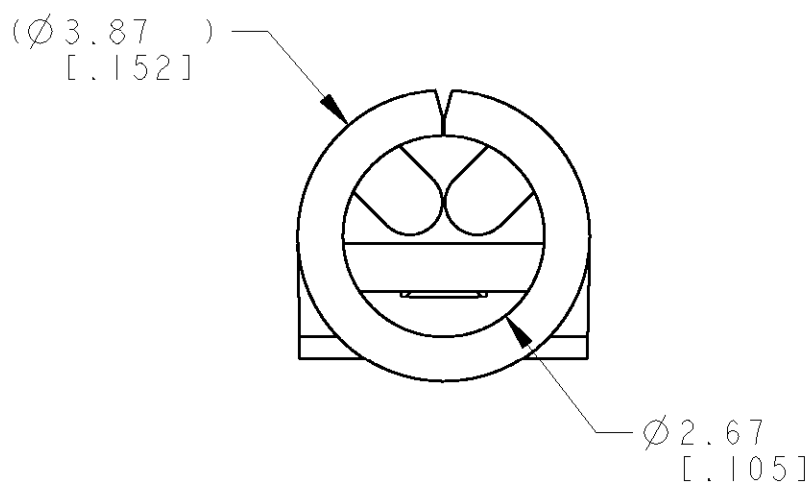
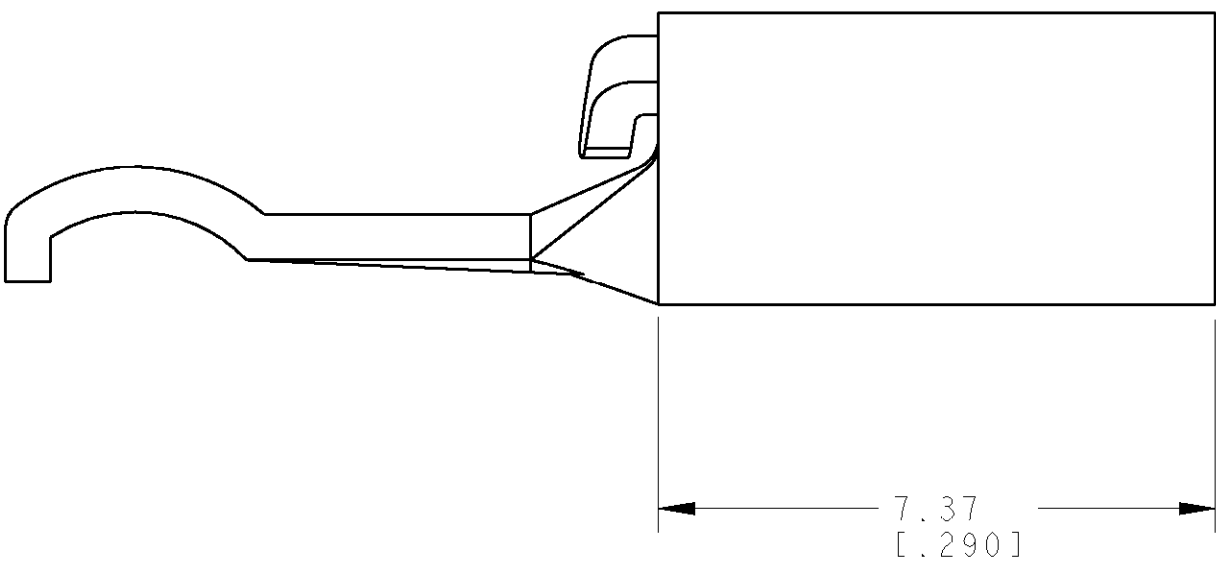
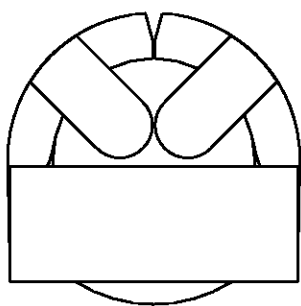
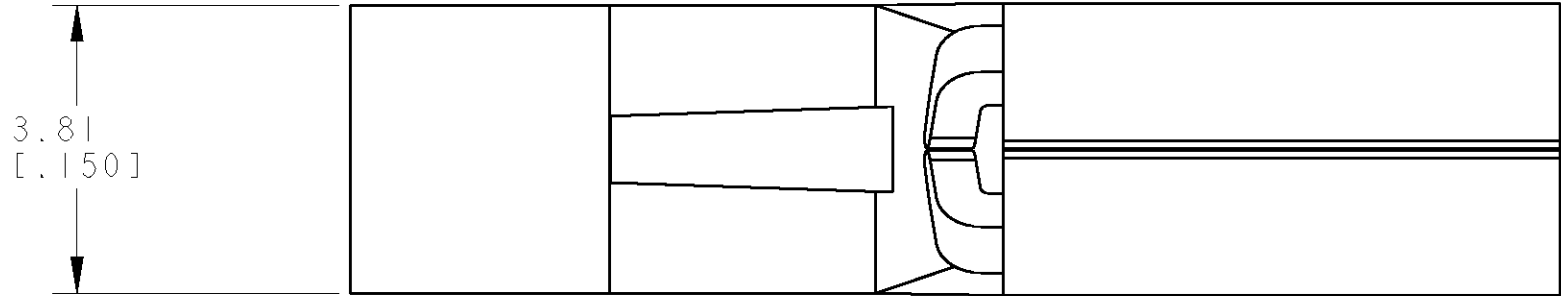
Tel: +86-755-8981 8866 Fax: +86-755-8427 6832

Email & Skype: [info@chipsmall.com](mailto:info@chipsmall.com) Web: [www.chipsmall.com](http://www.chipsmall.com)

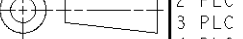
Address: A1208, Overseas Decoration Building, #122 Zhenhua RD., Futian, Shenzhen, China



LOC		DIST		REVISONS			
CM	00	P.	LTR	DESCRIPTION	DATE	DWN	APVD
		0		REVISED PER 0638-1032-04	10NOV04	KW	JE



METRIC

THIS DRAWING IS UNPUBLISHED. IT IS THE PROPERTY OF TYCO ELECTRONICS CORPORATION. IT IS TO BE KEPT IN CONFIDENTIALITY AND NOT TO BE REPRODUCED OR DISTRIBUTED WITHOUT THE WRITTEN PERMISSION OF TYCO ELECTRONICS CORPORATION. IT IS TO BE KEPT IN CONFIDENTIALITY AND NOT TO BE REPRODUCED OR DISTRIBUTED WITHOUT THE WRITTEN PERMISSION OF TYCO ELECTRONICS CORPORATION.				DWN R. WHITAKER	10NOV2004	<b>tyco</b> <b>Electronics</b> Tyco Electronics Harrisburg, PA 17105-3608	
				CHK J. ELLIS	10NOV2004		
				APVD J. ELLIS	10NOV2004	NAME	
DIMENSIONS:  mm [INCHES]				TOLERANCES, UNLESS OTHERWISE SPECIFIED:		LOOSE PIECE CONTACT, 12 - 16 AWG, AMP POWER SERIES 30	
				0 PLC ±.0 1 PLC ±.5 (.02) 2 PLC ±0.13 (.005) 3 PLC ±. 4 PLC ±. ANGLES ±0° 30'		PRODUCT SPEC - APPLICATION SPEC -	
MATERIAL				FINISH		SIZE	CAGE CODE
COPPER				SILVER		A	00779
				CUSTOMER DRAWING		SCALE	DRAWING NO
						10:1	1744041
						SHEET	OF
						1	REV
						0	