



Chipsmall Limited consists of a professional team with an average of over 10 year of expertise in the distribution of electronic components. Based in Hongkong, we have already established firm and mutual-benefit business relationships with customers from,Europe,America and south Asia,supplying obsolete and hard-to-find components to meet their specific needs.

With the principle of “Quality Parts,Customers Priority,Honest Operation,and Considerate Service”,our business mainly focus on the distribution of electronic components. Line cards we deal with include Microchip,ALPS,ROHM,Xilinx,Pulse,ON,Everlight and Freescale. Main products comprise IC,Modules,Potentiometer,IC Socket,Relay,Connector.Our parts cover such applications as commercial,industrial, and automotives areas.

We are looking forward to setting up business relationship with you and hope to provide you with the best service and solution. Let us make a better world for our industry!



Contact us

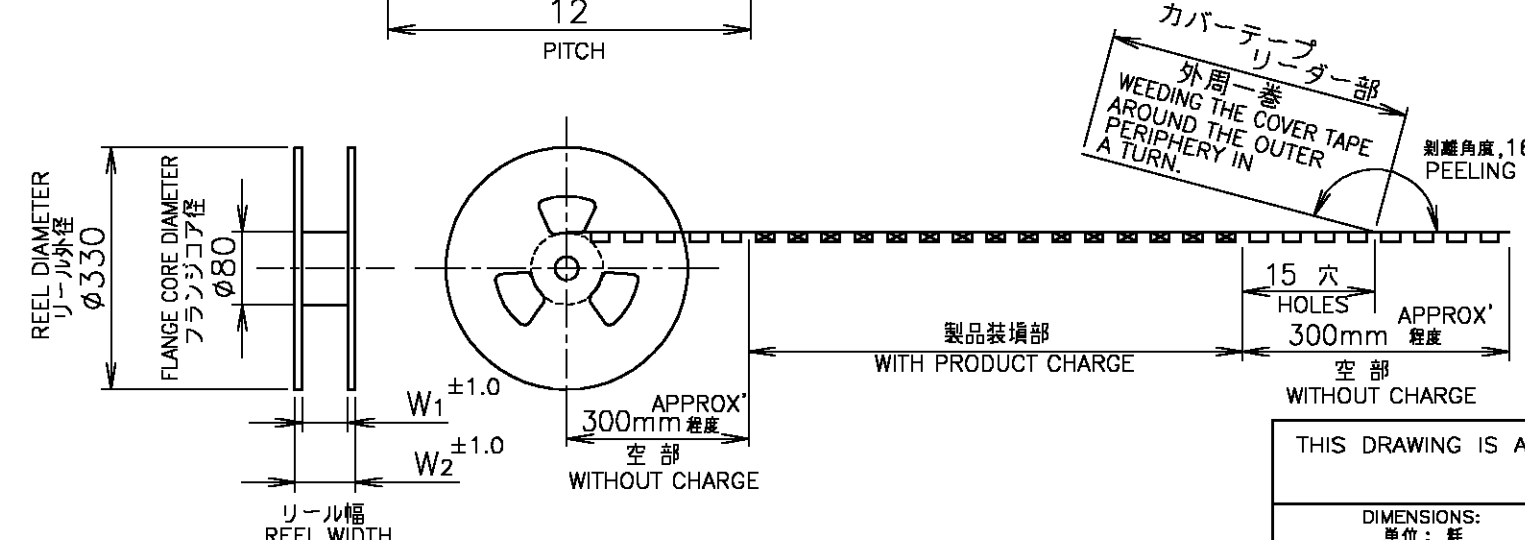
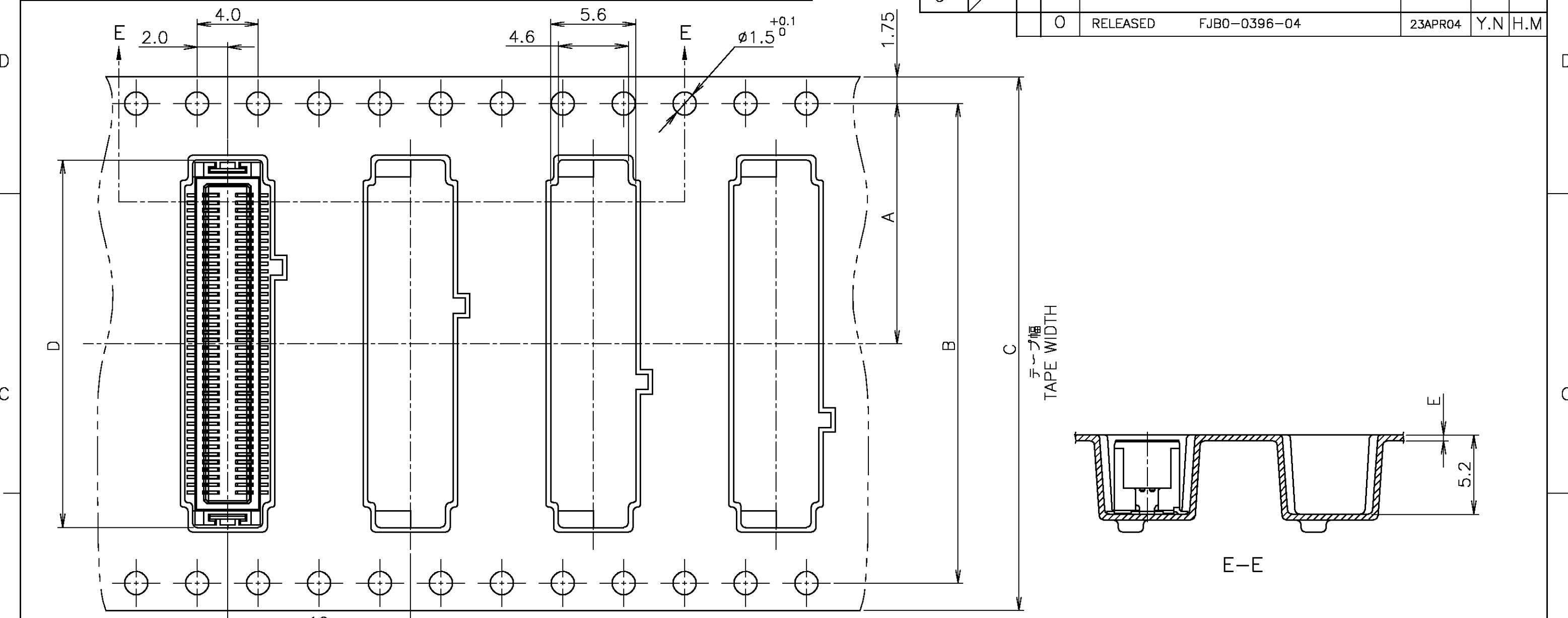
Tel: +86-755-8981 8866 Fax: +86-755-8427 6832

Email & Skype: info@chipsmall.com Web: www.chipsmall.com

Address: A1208, Overseas Decoration Building, #122 Zhenhua RD., Futian, Shenzhen, China



| LOC | DIST | REVISIONS | | | | | |
|-----|------|-----------|----------|--------------|---------|-----|------|
| J | | P | LTR | DESCRIPTION | DATE | DWN | APVD |
| | | 0 | RELEASED | FJB0-0396-04 | 23APR04 | Y.N | H.M |



引出し方向
TOP OF REEL →

鉛フリー
LEAD FREE

| | | |
|--|--|----------------------------|
| INSTRUCTION SHEET 取扱説明書 411-5808 | WIRE RANGE 抱合電線断面積 | INSULATION DIA 被覆外径 |
| DWN Y.NAKAZAWA 23APR04 | Tyco Electronics AMP K.K. Kawasaki, Japan | |
| CHK T.KUSUHARA 23APR04 | NAME 名称 ON TAPING (EMBOSS) 0.5mm PITCH FINE MATE CONN. TAB ASSEMBLY (V-TYPE) (H=6.0) | |
| APVD H.MURAMATSU 23APR04 | PRODUCT SPEC 製品規格 108-5496 | APPLICATION SPEC 取付適用規格 |
| WEIGHT | SIZE A3 | CAGE CODE 00779 |
| CUSTOMER DRAWING | DRAWING NO 番号 C-1747035 | RESTRICTED TO |
| SCALE 尺度 4:1 | SHEET 1 OF 2 | REV 0 |

THIS DRAWING IS A CONTROLLED DOCUMENT.

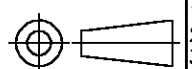
| DIMENSIONS: 単位: 純 MM | TOLERANCES UNLESS OTHERWISE SPECIFIED: 一般公差 |
|----------------------------|---|
| 0 PLC | ± 0.3 |
| 1 PLC | ± 0.3 |
| 2 PLC | ± 0.3 |
| 3 PLC | ± 0.3 |
| 4 PLC | ± 0.3 |
| ANGLES | ± 3' |
| MATERIAL 材料 | FINISH 仕上 |

| | | | | | | | | | | | | | | | | | | |
|--------------|------|------|-----|------|----|------|------|----------|-----|---------------|------------|--|--|--|--|--|--|--|
| WITH BOSS | | | | | | | | | | | | | | | | | | |
| | | | | | | | | | | | | | | | | | | |
| WITHOUT BOSS | | | | | | | | | | | | | | | | | | |
| | 28.7 | 25.5 | 0.4 | 16.6 | 24 | — — | 11.5 | 1000 | 50 | 1747036-6 | 1747035-6 | | | | | | | |
| | 50.5 | 45.5 | 0.4 | 24.1 | 44 | 40.4 | 20.2 | 1000 | 80 | 1747036-3 | 1747035-3 | | | | | | | |
| BOSS | W2 | W1 | E | D | C | B | A | QTY/REEL | POS | CONNECTOR P/N | TAPING P/N | | | | | | | |

| | | | | | |
|--|----------------------------------|----------------------------|--|--|-------------------------------|
| INSTRUCTION SHEET 取扱説明書 411-5808 | WIRE RANGE 包含電線断面積 | INSULATION DIA 被覆外径 | DWN | tyco Tyco Electronics AMP K.K. Kawasaki,japan | |
| THIS DRAWING IS A CONTROLLED DOCUMENT. | | APVD | NAME 名称 ON TAPING (EMBOSS) 0.5mm PITCH FINE MATE CONN. TAB ASSEMBLY (V-TYPE) (H=6.0) | | |
| | PRODUCT SPEC 製品規格 108-5496 | APPLICATION SPEC 取付適用規格 | SIZE A3 | CAGE CODE 00779 | DRAWING NO 番号 C=1747035 |
| MATERIAL 材料 | FINISH 仕上 | WEIGHT | RESTRICTED TO | | |
| CUSTOMER DRAWING | | SCALE 尺度 4:1 | SHEET 2 | OF 2 | REV 0 |

| | |
|----------------------------|--|
| DIMENSIONS: 単位: 髡 MM | TOLERANCES UNLESS OTHERWISE SPECIFIED: 一般公差 |
| | 0 PLC ± 0.3 1 PLC ± 0.3 2 PLC ± 0.3 3 PLC ± 0.3 4 PLC ± 0.3 ANGLES ± 3' |

鉛フリー
LEAD FREE



D

C

B

A

D

C

B

A