



Chipsmall Limited consists of a professional team with an average of over 10 year of expertise in the distribution of electronic components. Based in Hongkong, we have already established firm and mutual-benefit business relationships with customers from,Europe,America and south Asia,supplying obsolete and hard-to-find components to meet their specific needs.

With the principle of “Quality Parts,Customers Priority,Honest Operation,and Considerate Service”,our business mainly focus on the distribution of electronic components. Line cards we deal with include Microchip,ALPS,ROHM,Xilinx,Pulse,ON,Everlight and Freescale. Main products comprise IC,Modules,Potentiometer,IC Socket,Relay,Connector.Our parts cover such applications as commercial,industrial, and automotives areas.

We are looking forward to setting up business relationship with you and hope to provide you with the best service and solution. Let us make a better world for our industry!



Contact us

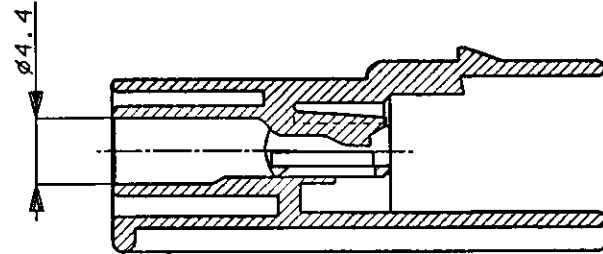
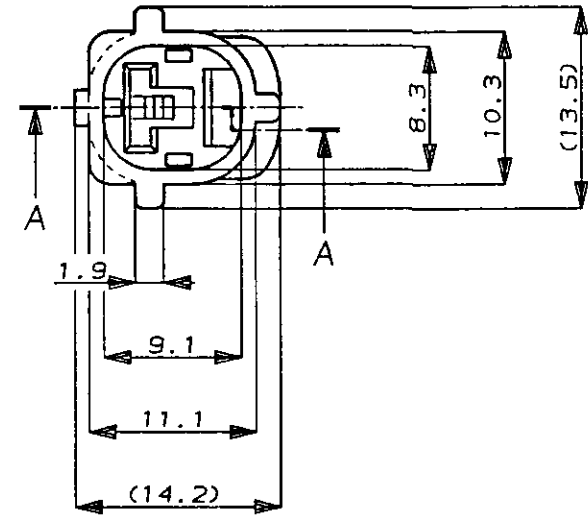
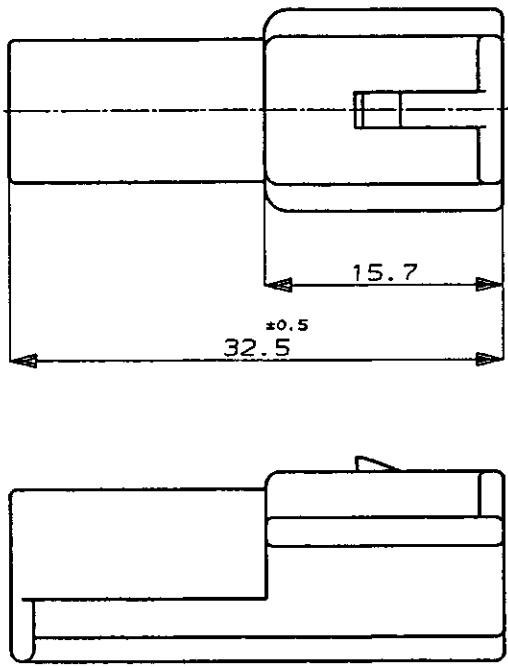
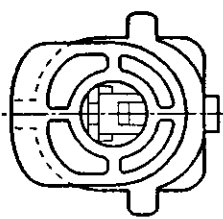
Tel: +86-755-8981 8866 Fax: +86-755-8427 6832

Email & Skype: info@chipsmall.com Web: www.chipsmall.com

Address: A1208, Overseas Decoration Building, #122 Zhenhua RD., Futian, Shenzhen, China



NUMBER C-174879
 METRIC
 3rd ANGLE PROJECTION



SECTION 断面 A-A

注 :

- 1 かん合相手型番 : 174877
- 2 本品はダブルロックプレート P/N 174880を装着して使用する

NOTE :

- 1 FOR PLUG HOUSING (P/N174877)
- 2 THIS PART MUST BE USED WITH DOUBLE LOCK PLATE (P/N174880)

DIMENSIONS IN MILLIMETERS. DO NOT SCALE PRINT

PRINT DIST

AMP-J REV. 10/83

灰 (GRAY)	.174879-6
黒 (BRACK)	174879-2
色 (COLOR)	型番 P/N

AMP AMP (JAPAN), LTD.
Tokyo, Japan

© 19 BY AMP (Japan) LTD.
ALL RIGHTS RESERVED.
AMP PRODUCTS COVERED BY PATENTS
AND OR PATENTS PENDING

WIRE RANGE		INSULATION DIA		NAME	
mm ² (AWG)		mm		1P. ECONOSEAL J-MARK II ⁺ CONNECTOR 1極 エコノシール J マーク II ⁺ CAP HOUSING キャップハウジング	
MATERIAL		COLOR		GENERAL TOLERANCE	
PBT		SEE TABLE 表参照		0≤ 10 : ± 0.2 10≤ 30 : ± 0.25 30≤ 100 : ± 0.3 ANGLES : $\pm 3^\circ$	
DR. K. Oda 10/19/87		DE. K. Oda 10/19/87		SIZE	LOC
CHK. M. Matsushita 10/20/87		APP. M. Nosuchi 10/20/87		A3	J
LTR REVISION RECORD		DR CHK DATE		NUMBER	
				C-174879	
				SCALE	REV.
				2:1	B
				SHEET	
				1 OF 1	

CUSTOMER DRAWING