



Chipsmall Limited consists of a professional team with an average of over 10 year of expertise in the distribution of electronic components. Based in Hongkong, we have already established firm and mutual-benefit business relationships with customers from,Europe,America and south Asia,supplying obsolete and hard-to-find components to meet their specific needs.

With the principle of “Quality Parts,Customers Priority,Honest Operation,and Considerate Service”,our business mainly focus on the distribution of electronic components. Line cards we deal with include Microchip,ALPS,ROHM,Xilinx,Pulse,ON,Everlight and Freescale. Main products comprise IC,Modules,Potentiometer,IC Socket,Relay,Connector.Our parts cover such applications as commercial,industrial, and automotives areas.

We are looking forward to setting up business relationship with you and hope to provide you with the best service and solution. Let us make a better world for our industry!



## Contact us

Tel: +86-755-8981 8866 Fax: +86-755-8427 6832

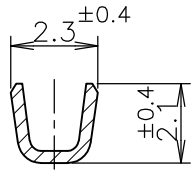
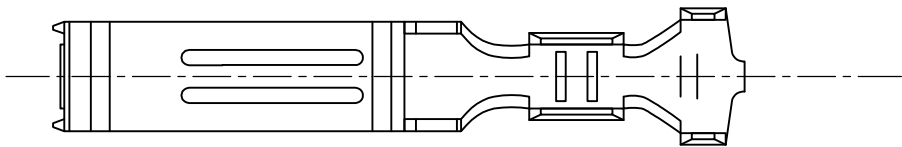
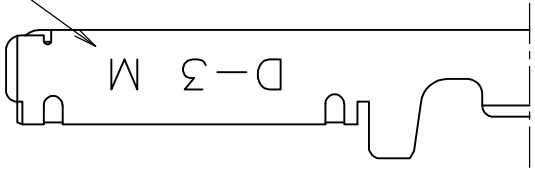
Email & Skype: [info@chipsmall.com](mailto:info@chipsmall.com) Web: [www.chipsmall.com](http://www.chipsmall.com)

Address: A1208, Overseas Decoration Building, #122 Zhenhua RD., Futian, Shenzhen, China

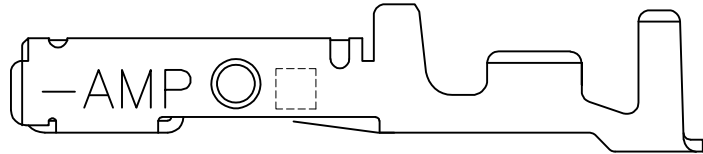
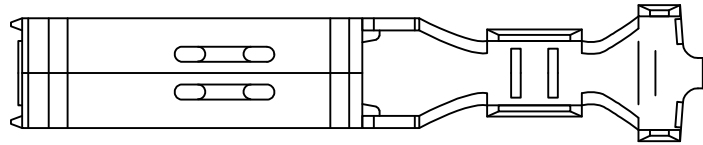


LOC	DIST	REVISIONS			
		P	LTR	DESCRIPTION	DATE
J			C	REVISED PER ECR-11-007143	07JUL2011

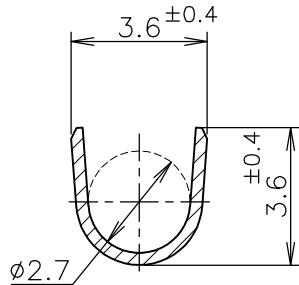
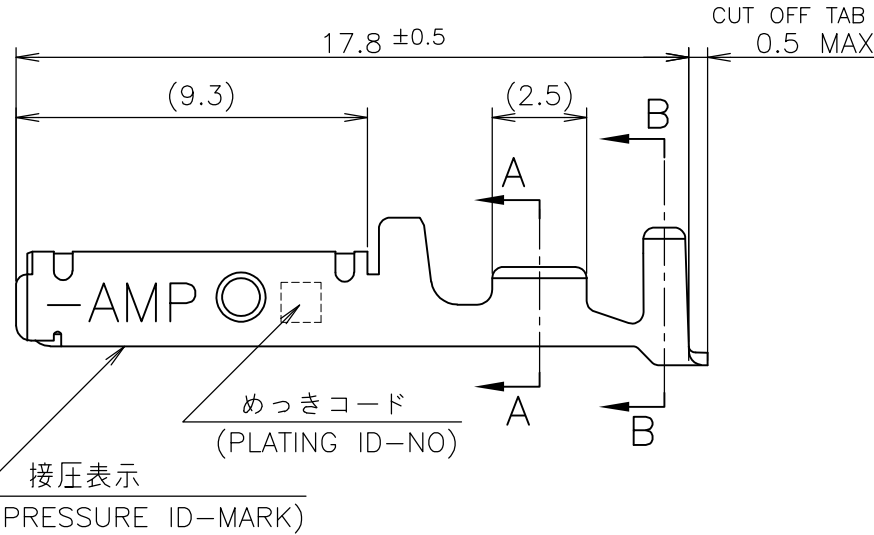
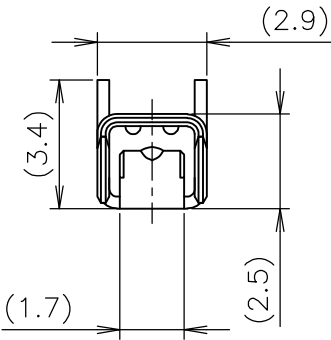
ワイヤーレンジ  
WIRE RANGE  
ID MARK



A-A



2-5 ONLY



B-B

- ① 標準接圧型コンタクト：一般向け及び多極用
- ② 高接圧型コンタクト：高電流用及び強振動用
- ③ 金めっきは接統部のみとする
- 4 製品規格：108-5349
- 5 取付け適用規格：114-5148


- ① CONTACT TYPE; LOW PRESSURE TYPE (FOR GENERAL)
- ② CONTACT TYPE; HIGH PRESSURE TYPE (FOR HIGH CURRENT OR ANTI-VIBRATION)
- ③ GOLD-PL. CONTACT AREA ONLY
- 4 PRODUCT SPEC: 108-5349
- 5 APPLICATION SPEC: 114-5148

OBSOLETE	②	H	5	光沢錫めっき (BRIGHT TIN-PL.)	2-175217-5		
			5	光沢錫めっき (BRIGHT TIN-PL.)	1-175217-5		
			3	0.76μm 最小金めっき (0.76μm MIN. Au-PL.)	1-175217-3		
			2	0.38μm 最小金めっき (0.38μm MIN. Au-PL.)	1-175217-2		
	①	INACTIVE	5	光沢錫めっき (BRIGHT TIN-PL.)	175217-5		
			3	0.76μm 最小金めっき (0.76μm MIN. Au-PL.)	175217-3		
			2	0.38μm 最小金めっき (0.38μm MIN. Au-PL.)	175217-2		
	備考 (REMARK)		接圧表示 (ID-MARK)	めっきコード (PL. ID NO)	仕 上 (FINISH)	③	型 番 (P/N)
	接点タイプ (CONT. TYPE)						

GENERAL TOLERANCE 一般公差
10 ≥ : ±0.2
30 ≥ > 10: ±0.25
100 ≥ > 30: ±0.3
ANGLES: ±3°

THIS DRAWING IS A CONTROLLED DOCUMENT.	
DIMENSIONS: 単位: 耗 mm	TOLERANCES UNLESS OTHERWISE SPECIFIED: 一般公差
	0 PLC ± 1 PLC ± 2 PLC ± 3 PLC ± 4 PLC ± ANGLES ±
MATERIAL 材料 (COPPER ALLOY) 銅合金	FINISH 仕上 (SEE TABLE) 表参照

DWN	27JUN1990
CHK	T-YONEBAYASHI
APVD	14FEB1991
H.OBATA	
S.MANABE	
PRODUCT SPEC	
製品規格	
APPLICATION SPEC	
取付適用規格	
WEIGHT	
CUSTOMER DRAWING	

WIRE RANGE 抱合電線断面積		AWG 24-20-20 (0.2-0.5mmSQ) mm²		INSULATION DIA 被覆外径		1.2-2.6 mmφ			
				TE Connectivity					
NAME 名称									
M SIZE DYNAMIC SERIES REC. CONTACT L/P ダイナミックシリーズリセブタクルコンタクト L/P									
SIZE	CAGE CODE	DRAWING NO 番号				RESTRICTED TO			
A3	00779	C-175217				—			
		SCALE 尺度		5:1		SHEET	1 OF 1	REV	C