



Chipsmall Limited consists of a professional team with an average of over 10 year of expertise in the distribution of electronic components. Based in Hongkong, we have already established firm and mutual-benefit business relationships with customers from,Europe,America and south Asia,supplying obsolete and hard-to-find components to meet their specific needs.

With the principle of "Quality Parts,Customers Priority,Honest Operation,and Considerate Service",our business mainly focus on the distribution of electronic components. Line cards we deal with include Microchip,ALPS,ROHM,Xilinx,Pulse,ON,Everlight and Freescale. Main products comprise IC,Modules,Potentiometer,IC Socket,Relay,Connector.Our parts cover such applications as commercial,industrial, and automotives areas.

We are looking forward to setting up business relationship with you and hope to provide you with the best service and solution. Let us make a better world for our industry!



Contact us

Tel: +86-755-8981 8866 Fax: +86-755-8427 6832

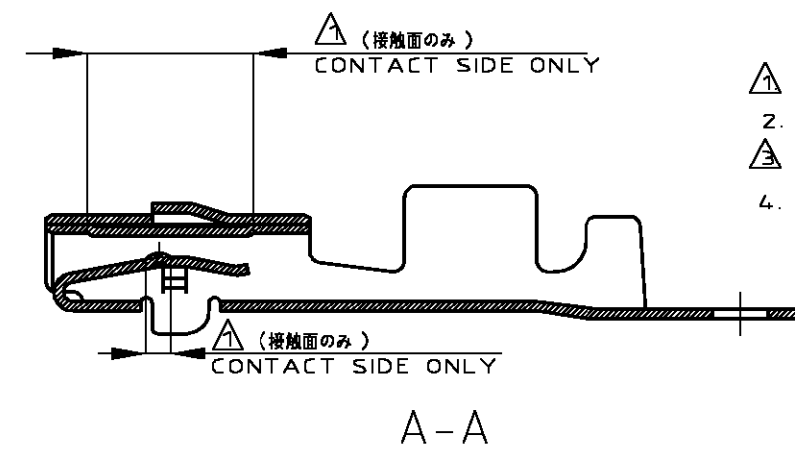
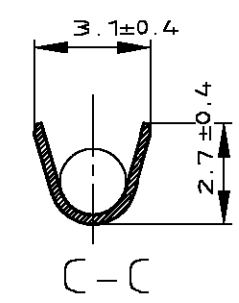
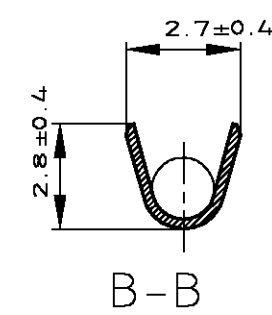
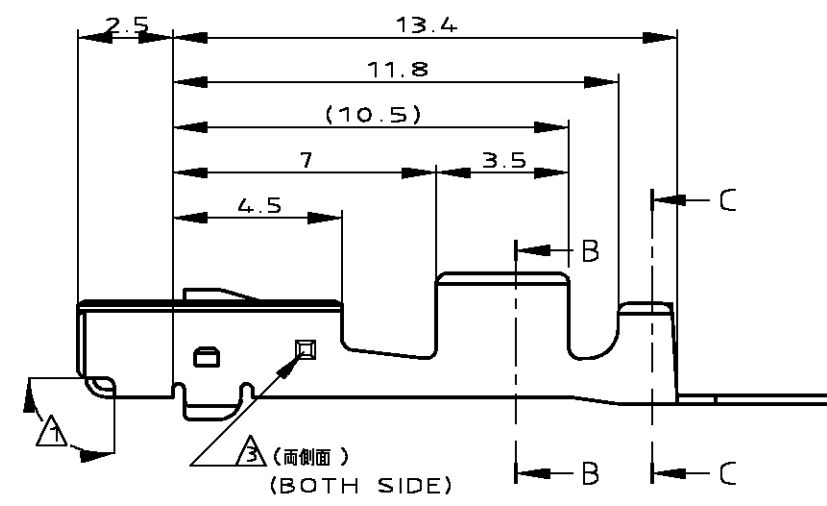
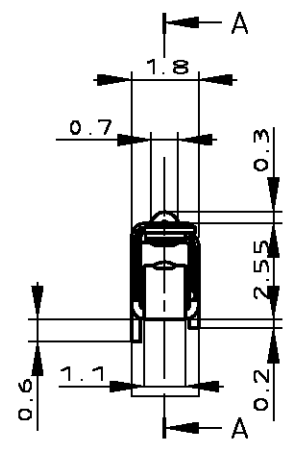
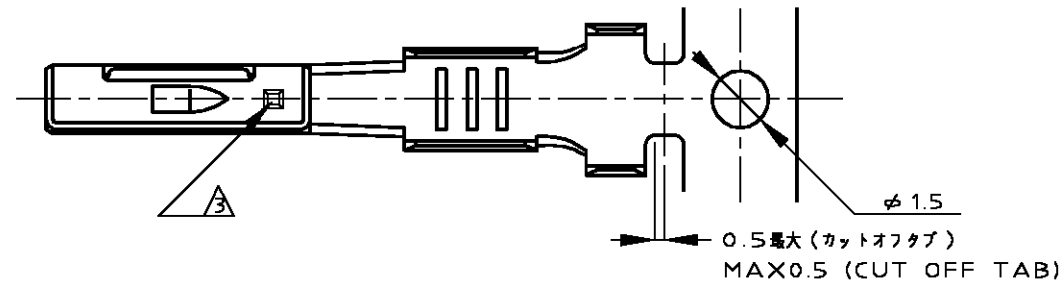
Email & Skype: info@chipsmall.com Web: www.chipsmall.com

Address: A1208, Overseas Decoration Building, #122 Zhenhua RD., Futian, Shenzhen, China



THIS DRAWING IS UNPUBLISHED. RELEASED FOR PUBLICATION
 © COPYRIGHT 01 BY TYCO ELECTRONICS CORPORATION. ALL RIGHTS RESERVED.

LOC	DIST	REVISIONS					
J	—	P	LTR	DESCRIPTION	DATE	DWN	APVD
		G1		REDRAWN WITH CHANGE fj00-0824-00	17JAN01	KF	NS



- △ SELECTIVE GOLD
- 2. APPLICATION SPEC NO. 114-5159
- △ GOLD PLATING DISCERNMENT STAMP
- 4. APPLICABLE PRODUCT SPEC NO.108-5359
- △ 部分金めっき
- 2. 取付適用規格番号 114-5159
- △ 金めっき識別用刻印
- 4. 適用製品規格番号 108-5359

179420-2	部分金めっき (SELECTIVE GOLD)	175267-2
バフ端子型番 (LOOSE PIECE CONTACT P/N)	仕上げ (FINISH)	AMP型番 (PART NUMBER)

THIS DRAWING IS A CONTROLLED DOCUMENT.		DWN K.FURUYAMA 17JAN01	Tyco Electronics AMP K.K. Kawasaki, Japan	
		CHK N.SAI 17JAN01		
DIMENSIONS: MM		APVD N.SAI 17JAN01	NAME 040 II SERIES "M" RECEPTACLE CONTACT	
TOLERANCES UNLESS OTHERWISE SPECIFIED:		PRODUCT SPEC SEE TABLE	SIZE A3	
0 PLC ± 1 PLC ±- 2 PLC ±- 3 PLC ±- 4 PLC ±- ANGLES ±3		APPLICATION SPEC SEE TABLE	CAGE CODE 00779	DRAWING NO C-175267
MATERIAL Cu ALLOY		FINISH SEE TABLE	WEIGHT 0.3g	RESTRICTED TO
TOLERANCES UNLESS OTHERWISE SPECIFIED: 10 ≤ ±0.2 30 ≤ ±0.25 30 ≤ ±0.3		CUSTOMER DRAWING		SCALE 5:1 SHEET 1 OF 1 REV G1