



Chipsmall Limited consists of a professional team with an average of over 10 year of expertise in the distribution of electronic components. Based in Hongkong, we have already established firm and mutual-benefit business relationships with customers from,Europe,America and south Asia,supplying obsolete and hard-to-find components to meet their specific needs.

With the principle of "Quality Parts,Customers Priority,Honest Operation,and Considerate Service",our business mainly focus on the distribution of electronic components. Line cards we deal with include Microchip,ALPS,ROHM,Xilinx,Pulse,ON,Everlight and Freescale. Main products comprise IC,Modules,Potentiometer,IC Socket,Relay,Connector.Our parts cover such applications as commercial,industrial, and automotives areas.

We are looking forward to setting up business relationship with you and hope to provide you with the best service and solution. Let us make a better world for our industry!



Contact us

Tel: +86-755-8981 8866 Fax: +86-755-8427 6832

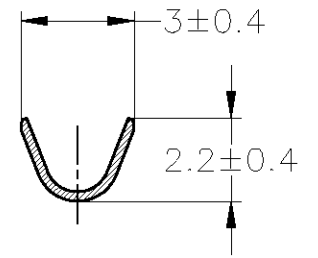
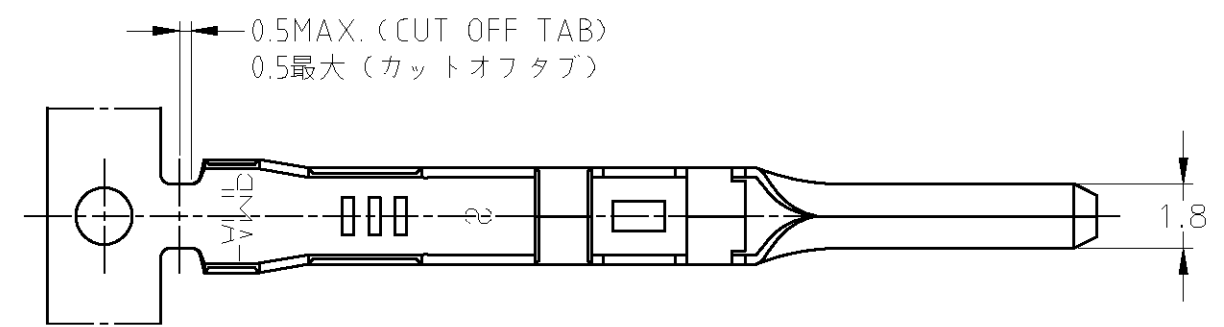
Email & Skype: info@chipsmall.com Web: www.chipsmall.com

Address: A1208, Overseas Decoration Building, #122 Zhenhua RD., Futian, Shenzhen, China

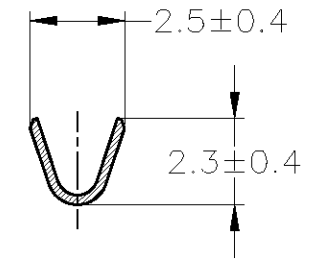
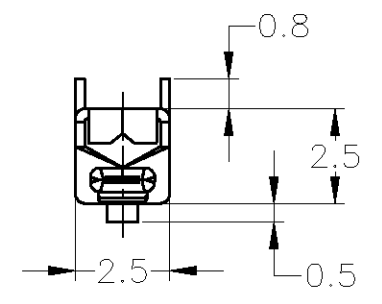
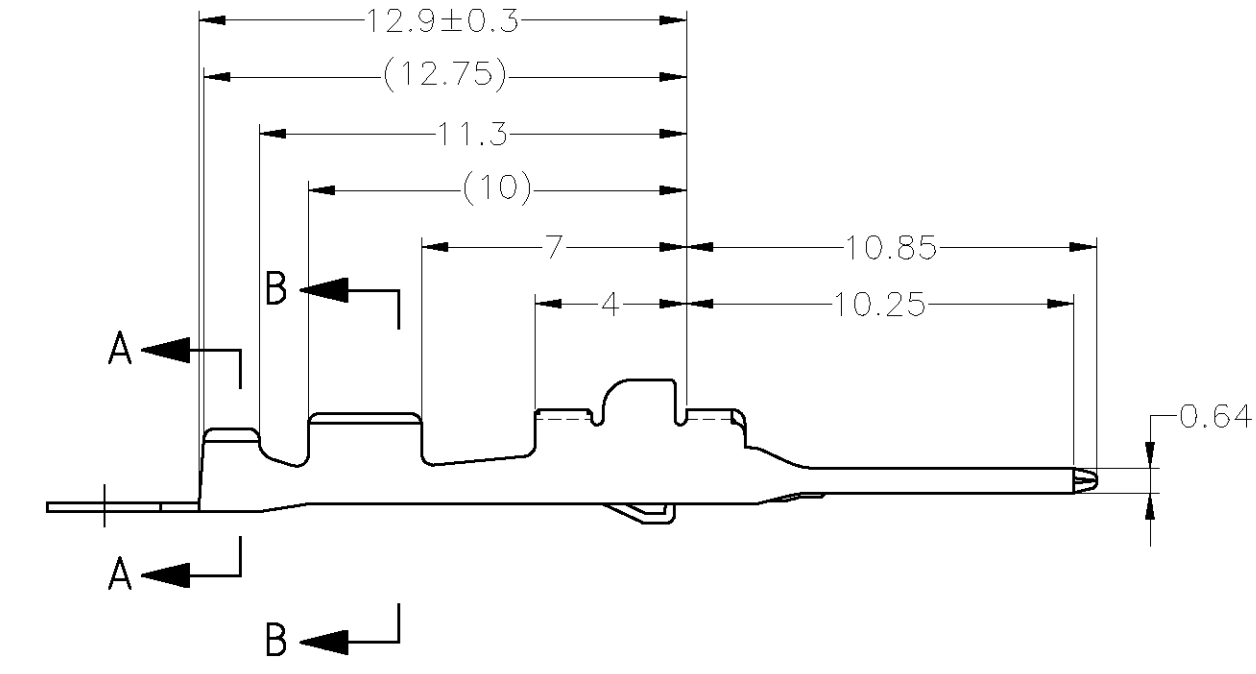


THIS DRAWING IS UNPUBLISHED. RELEASED FOR PUBLICATION
 © COPYRIGHT - By Tyco Electronics JAPAN G.K. ALL RIGHTS RESERVED.

LOC	DIST	REVISIONS			
P	LTR	DESCRIPTION	DATE	DWN	APVD
J	-	E2	REDRAWN W/CHANGE	ECR-12-012125	05JUL2012 TS KB



A-A



B-B

- 1. APPLICATION SPEC NO. 114-5160
- 2. APPLICABLE PRODUCT SPEC NO. 108-5374

- 1. 取付適用規格番号 114-5160
- 2. 適用製品規格番号 108-5374

179428-1	PRE-TIN	175272-1
LOOSE PIECE CONTACT PN	FINISH	PART NUMBER

THIS DRAWING IS A CONTROLLED DOCUMENT.		DWN T.SHINOHARA 05JUL2012	TE Connectivity	
DIMENSIONS: mm		CHK K.BETSUI 05JUL2012		
TOLERANCES UNLESS OTHERWISE SPECIFIED:		APVD K.BETSUI 05JUL2012		
0 PLC ± - 1 PLC ± - 2 PLC ± - 3 PLC ± - 4 PLC ± - ANGLES ± -		NAME		
MATERIAL BRASS		FINISH SEE TABLE	070II SERIES S TAB CONTACT	
TOLERANCES UNLESS OTHERWISE SPECIFIED:		APPLICATION SPEC SEE NOTE		RESTRICTED TO
10 ≥ ± 0.2 30 ≥ > 10 ± 0.25 100 ≥ > 30 ± 0.3 ANGLE : ± 3°		WEIGHT 0.29 g	SIZE A3	CAGE CODE 00779
		DRAWING NO C-175272		SCALE 5:1
		CUSTOMER DRAWING		SHEET 1 OF 1
				REV E2