



Chipsmall Limited consists of a professional team with an average of over 10 year of expertise in the distribution of electronic components. Based in Hongkong, we have already established firm and mutual-benefit business relationships with customers from,Europe,America and south Asia,supplying obsolete and hard-to-find components to meet their specific needs.

With the principle of “Quality Parts,Customers Priority,Honest Operation,and Considerate Service”,our business mainly focus on the distribution of electronic components. Line cards we deal with include Microchip,ALPS,ROHM,Xilinx,Pulse,ON,Everlight and Freescale. Main products comprise IC,Modules,Potentiometer,IC Socket,Relay,Connector.Our parts cover such applications as commercial,industrial, and automotives areas.

We are looking forward to setting up business relationship with you and hope to provide you with the best service and solution. Let us make a better world for our industry!



Contact us

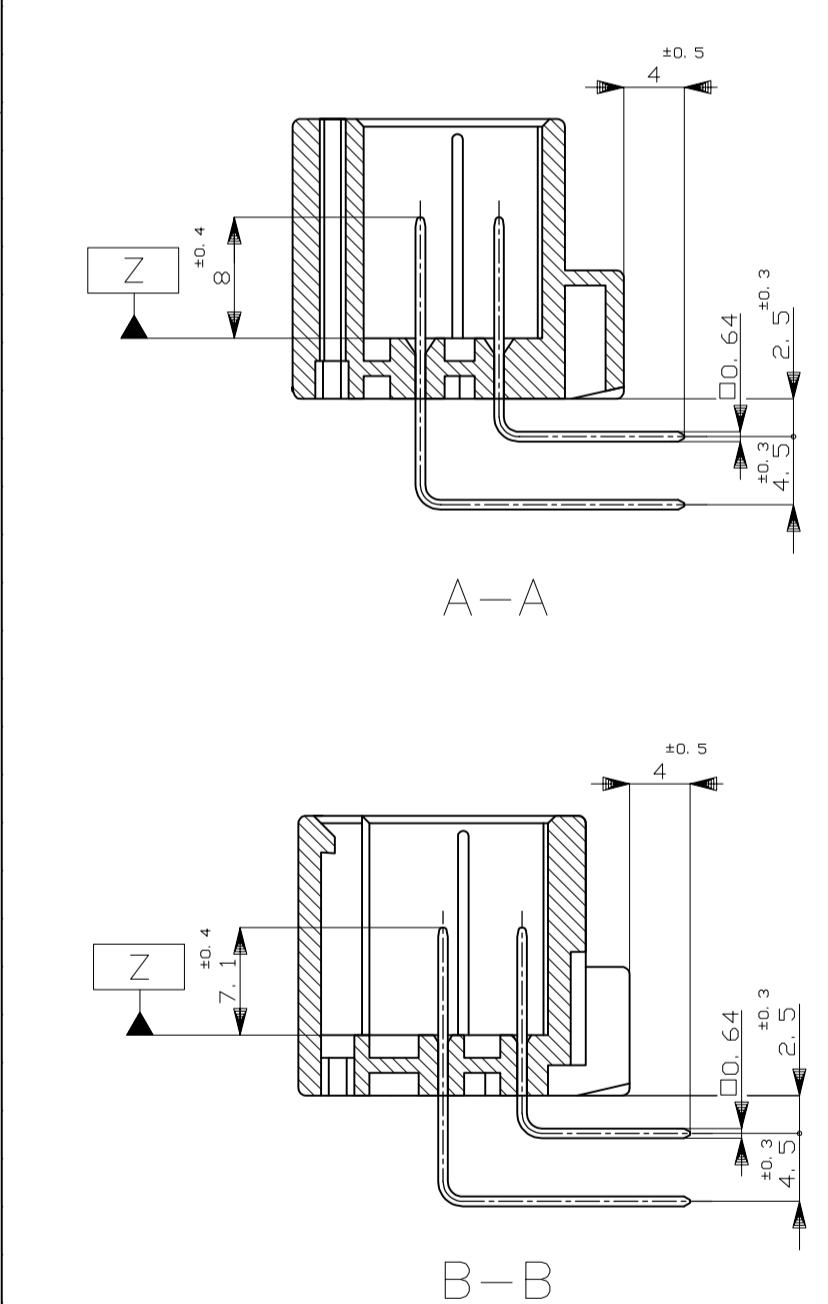
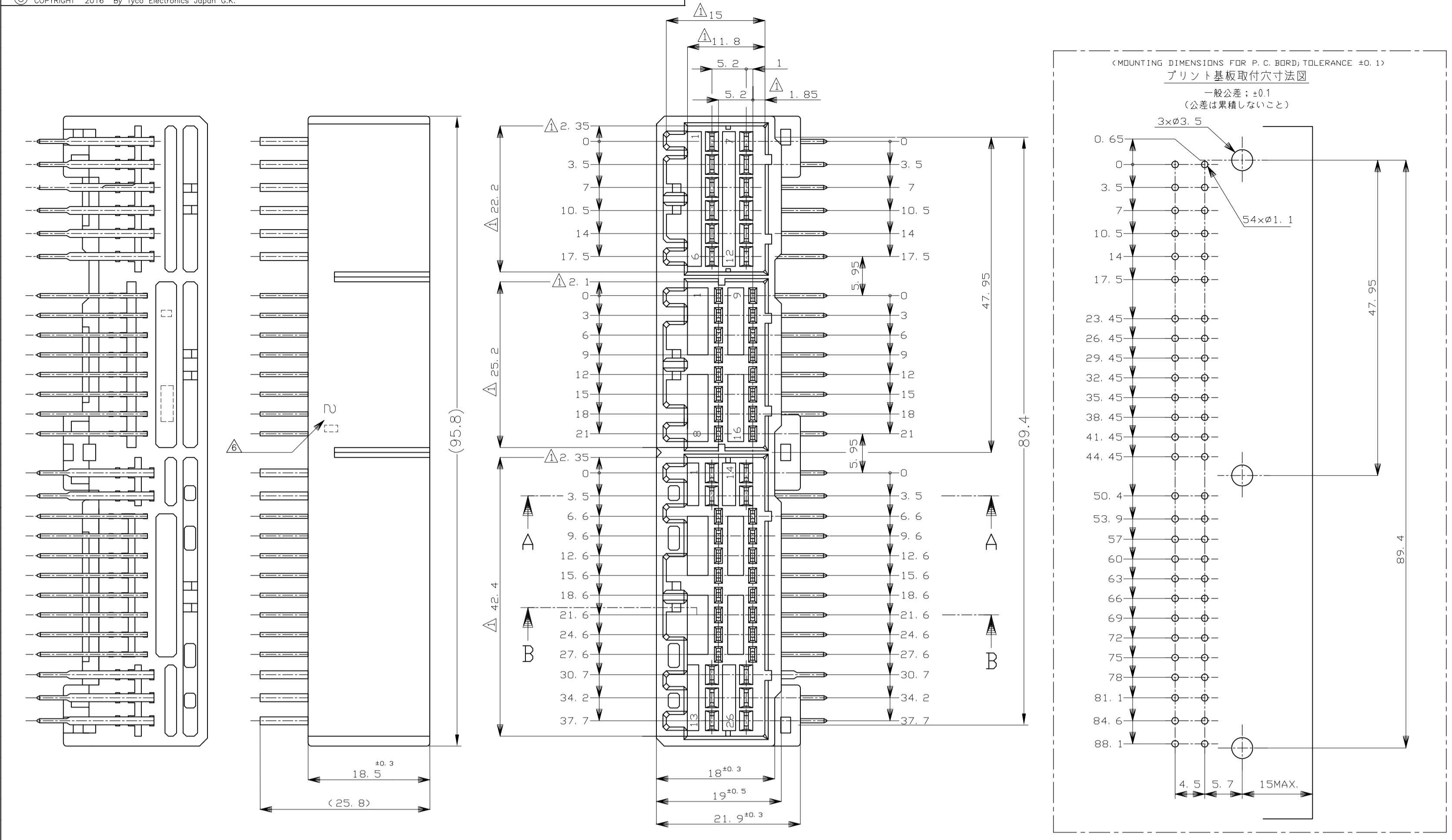
Tel: +86-755-8981 8866 Fax: +86-755-8427 6832

Email & Skype: info@chipsmall.com Web: www.chipsmall.com

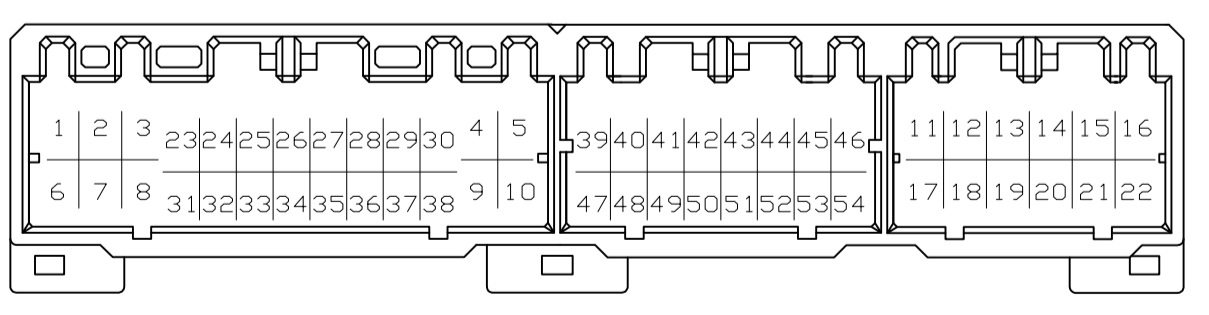
Address: A1208, Overseas Decoration Building, #122 Zhenhua RD., Futian, Shenzhen, China



REVISIONS					
REV	DATE	DESCRIPTION	BY	CHK	APPV
N9	05SEP2016	ECR-16-003280	KF	HY	



- MUST BE KEPT BETWEEN [Z] AND 2
 - THE MATING PLUG HOUSING PART NUMBER:
174514, 174516, 175442, 917981, 917992, 917978
 - RECOMMENDED MOUNTING SCREW: 3mm DIA, 6mm LENGTH (MAX.)
PAN HEAD, CLASS 2 TAPPING SCREW SPECIFIED IN JIS
B1115, B1122 (TIGHTENING TORQUE: 0.39N·m MAX)
 - APPLICABLE PRODUCT SPECIFICATION NUMBER: 108-5280, 108-5342
CIRCUIT NUMBER: SEE FIG.1
 - MARKING FOR DISCERNMENT OF THE CONTACT FINISH
- 面から2mmの範囲で測定
 - 嵌合相手ハウジング型番: 174514, 174516, 175442, 917981, 917992, 917978
 - 推奨取付ねじ: JIS B1115, B1122 タッピングねじ, なべ2種
呼び径3, 長さ6mm以下 (締付けトルク: 0.39N·m以下)
 - 適用製品規格番号: 108-5280, 108-5342
 - 回路番号: FIG.1参照
 - コネクタ仕上識別マーク



POWER CIRCUIT NUMBER: ① ~ ②②
パワー回路:
SIGNAL CIRCUIT NUMBER: ②③ ~ ⑤④
シグナル回路:

Fig.1

Part No.	Material	Finish	Color	Part No.	Material	Finish	Color	Part No.	Material	Finish	Color	Part No.
FJPI-9-5175448-1	PAPER BOX	PLASTIC TUBE	SELECTIVE-TIN (MATTE)	SELECTIVE GOLD × 8	-	28,29,36,37,45,46,53,54	NATURAL	9-5175448-1				
	ダンボール箱	プラスチックチューブ	PRE-TIN × 46									
FJPI-7-5175448-6	PAPER BOX	PLASTIC TUBE	SELECTIVE-TIN (MATTE)	SELECTIVE GOLD × 8	12~16,19,22	38	GRAY	7-5175448-6				
	ダンボール箱	プラスチックチューブ	PRE-TIN × 46									
FJPI-6-5175448-6	PAPER BOX	PLASTIC TUBE	SELECTIVE-TIN (MATTE)	SELECTIVE GOLD × 6	-	37,41,42,45,49,52	GRAY	6-5175448-6				
	ダンボール箱	プラスチックチューブ	PRE-TIN × 48									
FJPI-4-5175448-6	PAPER BOX	PLASTIC TUBE	SELECTIVE-TIN (MATTE)	SELECTIVE GOLD × 24	-	27~38,41~46,49~54	GRAY	4-5175448-6				
	ダンボール箱	プラスチックチューブ	PRE-TIN × 30									
FJPI-4-5175448-1	PAPER BOX	PLASTIC TUBE	SELECTIVE-TIN (MATTE)	SELECTIVE GOLD × 24	-	27~38,41~46,49~54	NATURAL	4-5175448-1				
	ダンボール箱	プラスチックチューブ	PRE-TIN × 30									
FJPI-3-5175448-6	PAPER BOX	PLASTIC TUBE	SELECTIVE-TIN (MATTE)	SELECTIVE GOLD × 12	11~22	-	GRAY	3-5175448-6				
	ダンボール箱	プラスチックチューブ	PRE-TIN × 42									
FJPI-3-5175448-1	PAPER BOX	PLASTIC TUBE	SELECTIVE-TIN (MATTE)	SELECTIVE GOLD × 4	-	44,45,52,53	NATURAL	3-5175448-1				
	ダンボール箱	プラスチックチューブ	PRE-TIN × 50									
FJPI-2-5175448-1	PAPER BOX	PLASTIC TUBE	SELECTIVE-TIN (MATTE)	SELECTIVE GOLD × 32	-	23~54	NATURAL	2-5175448-1				
	ダンボール箱	プラスチックチューブ	PRE-TIN × 22									
FJPI-5175448-1	PAPER BOX	PLASTIC TUBE	SELECTIVE-TIN (MATTE)	SELECTIVE GOLD × 40	1~4,6~9 12~15,18~21	23~28,41~44,49~52	NATURAL	5175448-1				
	ダンボール箱	プラスチックチューブ	PRE-TIN × 14									
FJPI-2-5175448-6	PLASTIC BOX	PLASTIC TUBE	SELECTIVE-TIN (MATTE)	SELECTIVE GOLD × 32	-	23~54	GRAY	2-5175448-6				
	通い箱	プラスチックチューブ	SELECTIVE-TIN × 22 (BRIGHT)									
FJPI-9-175448-1	PAPER BOX	PLASTIC TUBE	TIN-LEAD	SELECTIVE GOLD × 8	-	28,29,36,37,45,46,53,54	NATURAL	9-175448-1				
	ダンボール箱	プラスチックチューブ	PRE-TIN × 46									
FJPI-8-175448-1	PAPER BOX	PLASTIC TUBE	TIN-LEAD	SELECTIVE GOLD × 16	-	39~54	NATURAL	8-175448-1				
	ダンボール箱	プラスチックチューブ	PRE-TIN × 38									
FJPI-5-175448-6	PAPER BOX	PLASTIC TUBE	TIN-LEAD	SELECTIVE GOLD × 13	-	29,30,37,41,42,44,45 47,49,50,52~54	GRAY	5-175448-6				
	ダンボール箱	プラスチックチューブ	PRE-TIN × 41									
FJPI-4-175448-6	PAPER BOX	PLASTIC TUBE	TIN-LEAD	SELECTIVE GOLD × 24	-	27~38,41~46,49~54	GRAY	4-175448-6				
	ダンボール箱	プラスチックチューブ	PRE-TIN × 30									
FJPI-4-175448-2	PAPER BOX	PLASTIC TUBE	TIN-LEAD	SELECTIVE GOLD × 24	-	27~38,41~46,49~54	BLACK	4-175448-2				
	ダンボール箱	プラスチックチューブ	PRE-TIN × 30									
FJPI-4-175448-1	PAPER BOX	PLASTIC TUBE	TIN-LEAD	SELECTIVE GOLD × 24	-	27~38,41~46,49~54	NATURAL	4-175448-1				
	ダンボール箱	プラスチックチューブ	PRE-TIN × 30									
FJPI-3-175448-6	PAPER BOX	PLASTIC TUBE	TIN-LEAD	SELECTIVE GOLD × 12	11~22	-	GRAY	3-175448-6				
	ダンボール箱	プラスチックチューブ	PRE-TIN × 42									
FJPI-3-175448-1	PAPER BOX	PLASTIC TUBE	TIN-LEAD	SELECTIVE GOLD × 4	-	44,45,52,53	NATURAL	3-175448-1				
	ダンボール箱	プラスチックチューブ	PRE-TIN × 50									
FJPI-2-175448-6	PAPER BOX	PLASTIC TUBE	TIN-LEAD	SELECTIVE GOLD × 32	-	23~54	GRAY	2-175448-6				
	ダンボール箱	プラスチックチューブ	PRE-TIN × 22									
FJPI-2-175448-1	PAPER BOX	PLASTIC TUBE	TIN-LEAD	SELECTIVE GOLD × 32	-	23~54	NATURAL	2-175448-1				
	ダンボール箱	プラスチックチューブ	PRE-TIN × 22									
FJPI-1-175448-0	PAPER BOX	PLASTIC TUBE	PRE-TIN × 54	-	-	-	GRAY	1-175448-0				
	ダンボール箱	プラスチックチューブ										
FJPI-175448-9	PAPER BOX	PLASTIC TUBE	SELECTIVE-TIN (MATTE)	SELECTIVE GOLD × 32	-	23~54	GRAY	175448-9				
	ダンボール箱	プラスチックチューブ	SELECTIVE-TIN × 22 (BRIGHT)									
FJPI-175448-8	PAPER BOX	PLASTIC TUBE	PRE-TIN × 54	-	-	-	ORANGE	175448-8				
	ダンボール箱	プラスチックチューブ										
FJPI-175448-6	PAPER BOX	PLASTIC TUBE	PRE-TIN × 54	-	-	-	GRAY	175448-6				
	ダンボール箱	プラスチックチューブ										
FJPI-175448-1	PAPER BOX	PLASTIC TUBE	TIN-LEAD	SELECTIVE GOLD × 40	1~4,6~9 12~15,18~21	23~28,41~44,49~52	NATURAL	175448-1				
	ダンボール箱	プラスチックチューブ	PRE-TIN × 14									

THIS DRAWING IS A CONTROLLED DOCUMENT.

DIMENSIONS: 単位: 寸法 (mm)

TOLERANCES UNLESS OTHERWISE SPECIFIED: 一般公差

0 PLC ± 0.2
1 PLC ± 0.25
2 PLC ± 0.3
3 PLC ± 0.3
4 PLC ± 0.3

MATERIAL: HOUSING: PBT CONTACT: BRASS

FINISH: 仕上

SEE TABLE

DIN: T. SHINOHARA 25JAN06
CHK: K. BETSUJI 25JAN06
APVD: K. BETSUJI 25JAN06

NAME: 氏名

PRODUCT SPEC: 製品仕様

APPLICATION SPEC: 取付適用規格

SIZE: A1

SCALE: 2:1

SHEET: 1 of 1

REV: N9

040/070 SERIES HYBRID CONNECTOR
54 POSITION CAP HOUSING ASSEMBLY

00779 175448

CUSTOMER DRAWING