



Chipsmall Limited consists of a professional team with an average of over 10 year of expertise in the distribution of electronic components. Based in Hongkong, we have already established firm and mutual-benefit business relationships with customers from,Europe,America and south Asia,supplying obsolete and hard-to-find components to meet their specific needs.

With the principle of “Quality Parts,Customers Priority,Honest Operation,and Considerate Service”,our business mainly focus on the distribution of electronic components. Line cards we deal with include Microchip,ALPS,ROHM,Xilinx,Pulse,ON,Everlight and Freescale. Main products comprise IC,Modules,Potentiometer,IC Socket,Relay,Connector.Our parts cover such applications as commercial,industrial, and automotives areas.

We are looking forward to setting up business relationship with you and hope to provide you with the best service and solution. Let us make a better world for our industry!



Contact us

Tel: +86-755-8981 8866 Fax: +86-755-8427 6832

Email & Skype: info@chipsmall.com Web: www.chipsmall.com

Address: A1208, Overseas Decoration Building, #122 Zhenhua RD., Futian, Shenzhen, China



Order No.: 1754627

Type: MSTB 2,5/11-ST

Plug component, Screw connection with tension sleeve



The figure shows a 10-position version of the product

1 Main features



- | | | | |
|---------------------------|--------------------------------------|------------------------|---------------------|
| • No. of pos. | 11 | • Nominal current | 12 A |
| • Conductor cross section | 2.5 mm ² | • Nominal voltage | 320 V |
| • Color | green | • Connection direction | 0 ° |
| • Pitch | 5 mm | • Type of packaging | packed in cardboard |
| • Connection method | Screw connection with tension sleeve | | |

2 Your advantages

- ✓ Well-known connection principle allows worldwide use
- ✓ Low temperature rise, thanks to maximum contact force
- ✓ Allows connection of two conductors



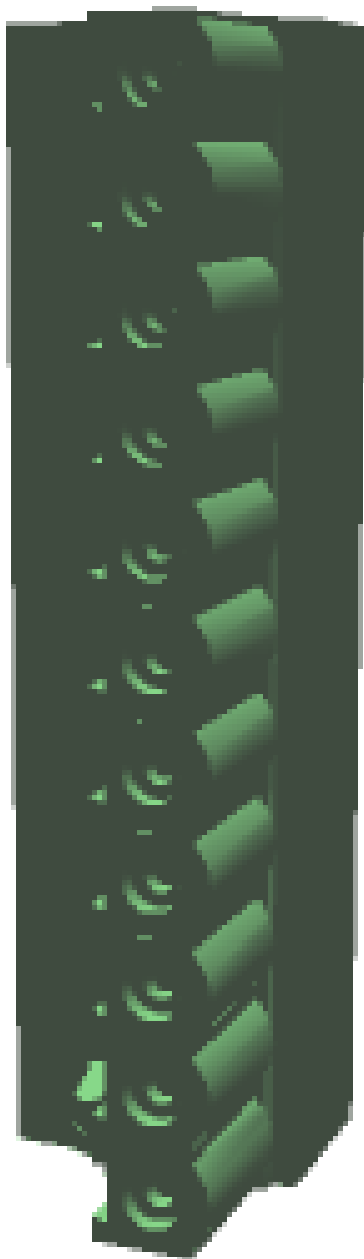
Make sure you always use the latest documentation.
It can be downloaded at: phoenixcontact.net/product/1754627

3 Table of contents

1	Main features.....	1
2	Your advantages	1
3	Table of contents	2
4	3D model in PDF can be activated (Acrobat Reader only).....	3
5	item properties.....	4
	5.1 Connection capacity	4
	5.2 Material data	4
6	Dimensions.....	4
	6.1 Dimensions for the product	5
7	Series drawing.....	6
8	Packaging information	7
9	Application.....	7
	9.1 Temperature limit values	7
10	Mechanical tests.....	8
	10.1 Termination and connection method.....	8
	10.2 Pull-out test	8
11	Electrical tests	9
	11.1 Electrical data	9
	11.2 Air and creepage distances	9
12	Current carrying capacity/derating curves	10
13	Environmental and durability tests	13
	13.1 Vibration test	13
14	Classification for connectors.....	13
15	Approvals	13
16	Commercial Data.....	15
17	corresponding headers.....	15
18	Accessories.....	15
19	Combination tests.....	16

1754627 MSTB 2,5/11-ST

4 3D model in PDF can be activated (Acrobat Reader only)



1754627 MSTB 2,5/11-ST**5 item properties**

Order No.	1754627
Type	MSTB 2,5/11-ST
Type of contact	Female connector
Range of articles	MSTB 2,5/...-ST
Pitch	5 mm
Number of positions	11
Connection method	Screw connection with tension sleeve
Drive form screw head	Slotted
Screw thread	M3
Tightening torque	0.5 Nm ... 0.6 Nm
Locking	without

5.1 Connection capacity

Conductor cross section, solid	0.2 mm ² to 2.5 mm ²
Conductor cross section, flexible	0.2 mm ² to 2.5 mm ²
Conductor cross section AWG/kcmil	24 to 12
2 conductors with same cross section, solid	0.2 mm ² to 1 mm ²
2 conductors with same cross section, stranded	0.2 mm ² to 1.5 mm ²
Conductor cross section flexible, with ferrule without plastic sleeve	0.25 mm ² to 2.5 mm ²
Conductor cross section flexible, with ferrule with plastic sleeve	0.25 mm ² to 2.5 mm ²
2 conductors with same cross section, stranded, with ferrule without plastic sleeve	0.25 mm ² to 1 mm ²
2 conductors with same cross section, stranded, with TWIN ferrules with plastic sleeve	0.5 mm ² to 1.5 mm ²
Cylindrical gauge a x b / diameter	2.8 mm x 2.4 mm / 2.5 mm
Stripping length	7 mm

5.2 Material data

Material of metal parts	
Note	WEEE/RoHS-compliant, whisker-free acc. to IEC 60068-2-82/JEDEC JESD 201
Contact material	Cu alloy
Terminal point surface	Sn 5 µm ... 7 µm
Surface contact area	Sn 5 µm ... 7 µm
Surface characteristics	hot-dip tin-plated
Insulating material data	
Insulating material	PA
CTI according to IEC 60112	600
Flammability rating according to UL 94	V0
Color	green (6021)
Glow wire flammability index GWFI according to EN 60695-2-12	850
Glow wire ignition temperature GWIT according to EN 60695-2-13	775
Temperature for the ball pressure test according to EN 60695-10-2	125 °C

6 Dimensions

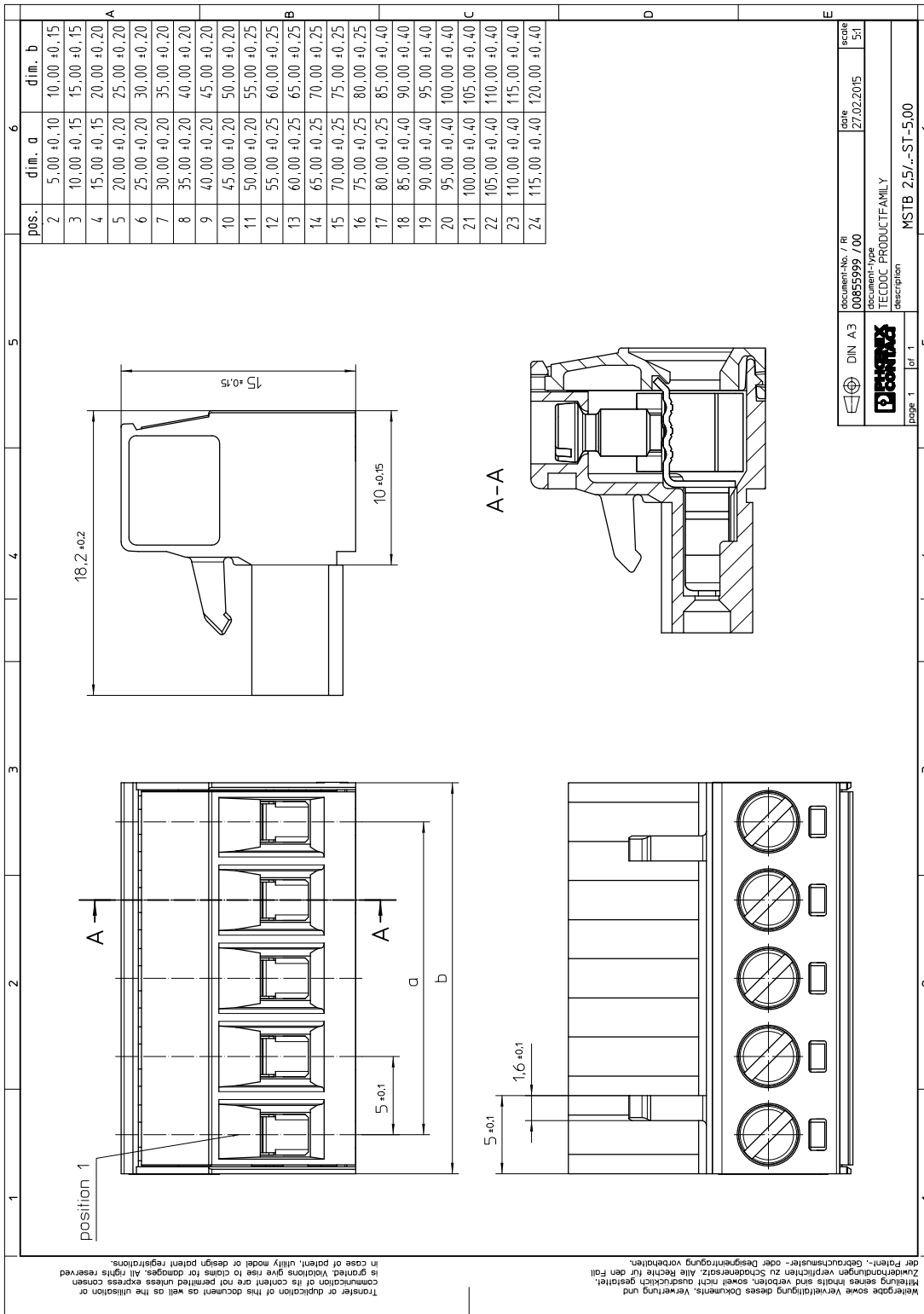
1754627 MSTB 2,5/11-ST

6.1 Dimensions for the product

Length	
Length	18.2 mm
Width	55 mm
Total height	15 mm
Dimension a	50 mm

1754627 MSTB 2,5/11-ST

7 Series drawing



1754627 MSTB 2,5/11-ST**8 Packaging information**

Type of packaging	packed in cardboard
Pieces per package	50

9 Application**9.1 Temperature limit values**

Ambient temperature (storage/transport)	-40 °C ... 70 °C
Ambient temperature (assembly)	-5 °C ... 100 °C
Ambient temperature (operation)	-40 °C (dependent on the derating curve)

1754627 MSTB 2,5/11-ST**10 Mechanical tests**

Mechanical test group A	
Specification	IEC 61984:2008-10
Visual test	Test passed
Specification	IEC 60512-1-1:2002-02
Dimensional test	Test passed
Specification	IEC 60512-1-2:2002-02
Resistance of marking	Test passed
Specification	IEC 60068-2-70:1995-12
Insertion and withdrawal force	Test passed
Specification	IEC 60512-13-2:2006-02
No. of cycles	25
Insertion strength per pos. approx.	8 N
Withdraw strength per pos. approx.	7 N
Polarization and coding	Test passed
Specification	IEC 60512-13-5:2006-02
Test force	20 N
Contact retention in insert	Test passed
Specification	IEC 60512-15-1:2008-05
Test force per pos.	27 N

10.1 Termination and connection method

Specification	IEC 60999-1:1999-11
Check for damage to conductor or loosening	Test passed

10.2 Pull-out test

Termination and connection method: pull-out test	
Specification	IEC 60999-1:1999-11
Result	Test passed
Conductor cross section/conductor type/tractive force actual value	0.2 mm ² / solid / > 10 N
Conductor cross section/conductor type/tractive force actual value	0.2 mm ² / stranded / > 10 N
Conductor cross section/conductor type/tractive force actual value	2.5 mm ² / solid / > 50 N
Conductor cross section/conductor type/tractive force actual value	2.5 mm ² / stranded / > 50 N

1754627 MSTB 2,5/11-ST**11 Electrical tests****11.1 Electrical data**

Rated current / conductor cross section	12 A / 2.5 mm ²
Rated insulation voltage (III/2)	320 V
Rated surge voltage (III/2)	4 kV
Contact resistance	1.4 mΩ
Degree of pollution	2

11.2 Air and creepage distances

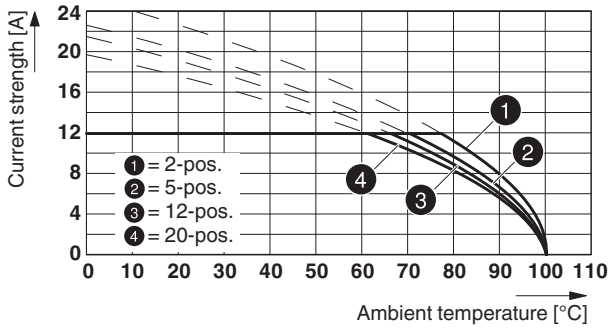
Component	Plug component		
Specification	IEC 60664-1:2007-04		
Mains type	unearthed mains		
Insulating material group	I		
Comparative tracking index (IEC 60112:2003-01)	CTI 600		
Rated insulation voltage	250 V	320 V	630 V
Rated surge voltage	4 kV	4 kV	4 kV
Degree of pollution	3	2	2
Overvoltage category	III	III	II
Minimum clearance case A (inhomogeneous field)	3 mm	3 mm	3 mm
Minimum value of the creepage path requirement in acc. with table	3.2 mm	3 mm	3.2 mm

1754627 MSTB 2,5/11-ST

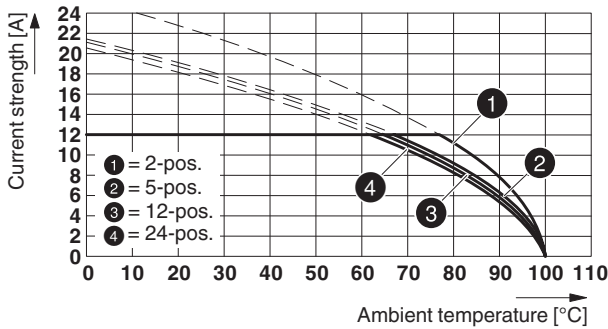
12 Current carrying capacity/derating curves

Specification	IEC 61984:2008-10
Note	Representation based on IEC 60512-5-2:2002-02
Reduction factor	0.8
Number of positions	See diagram
Conductor cross section	2.5 mm ²

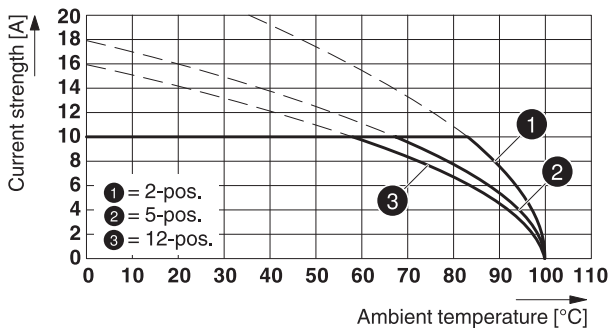
Type: MSTB 2,5/...-ST with MSTBW 2,5/...-G

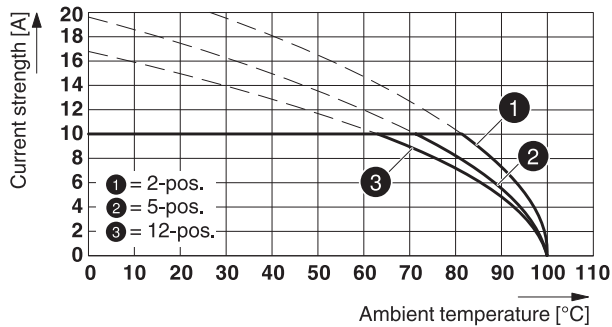
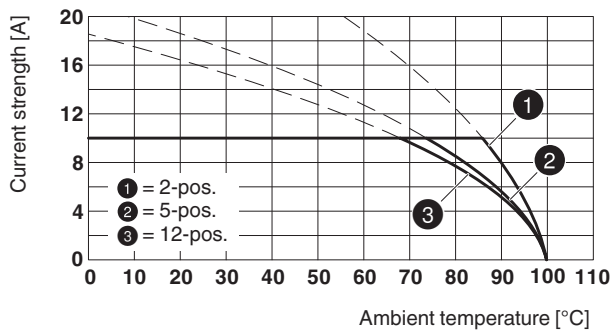


Type: MSTB 2,5/...-ST with MSTBA 2,5/...-G



Type: MSTB 2,5/...-ST with MDSTB 2,5/...-G



1754627 MSTB 2,5/11-ST**Type: MSTB 2,5/...-ST with MDSTBW 2,5/...-G****Type: MSTB 2,5/...-ST with MDSTBV 2,5/...-G****Type: MSTB 2,5/...-ST with MSTBVA 2,5/...-G**

86480_2000_en

Type: MSTB 2,5/...-ST with MSTBO 2,5/...-G1R

86551_2000_en

Type: MSTB 2,5/...-ST with SMSTBA 2,5/...-G

86580_2000_en

Type: MSTB 2,5/...-ST with MSTBO 2,5/...-G1L

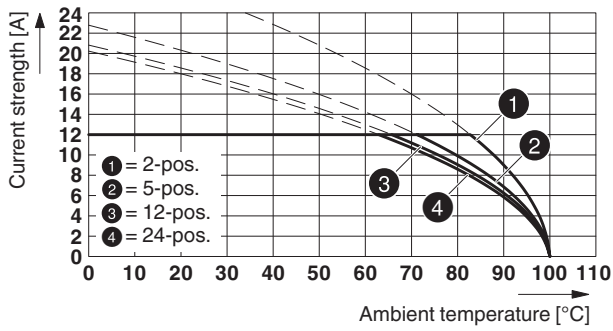
86639_2000_en

Type: MSTB 2,5/...-ST(-5,08) with EMSTBVA 2,5/...-G(-5,08)

86981_1000_en

1754627 MSTB 2,5/11-ST

Type: MSTB 2,5/...-STF with CCV 2,5/...-GF-LR P20 THR



1754627 MSTB 2,5/11-ST

13 Environmental and durability tests


13.1 Vibration test


Specification	IEC 60068-2-6:2007-12
Result	Test passed
Frequency	10 - 150 - 10 Hz
Sweep speed	1 octave/min
Amplitude	0.35 mm (10 - 60.1 Hz)
Acceleration	5 g (60.1 - 150 Hz)
Test duration per axis	2.5 h
Test directions	X-, Y- and Z-axis


14 Classification for connectors


Specification	IEC 61984:2008-10
Main features	Connectors without switching capacity (COC)
Construction form	Fixed connectors
Strain relief elements	without strain relief
Connection method	Can be reconnected
Protection against electric shock	Not encapsulated - touch-proof when inserted
Protective conductor	without PE
Lock	no
Connection method	Screw terminal points

15 Approvals

CSA 				
Use group	B	D		
mm ² /AWG/kcmil	28-12	28-12		
Voltage	300 V	300 V		
Current	10 A	10 A		

VDE Gutachten mit Fertigungsüberwachung 				
mm ² /AWG/kcmil	0.2-2.5			
Voltage	250 V			
Current	12 A			

IECEE CB Scheme 				
mm ² /AWG/kcmil	0.2-2.5			
Voltage	250 V			
Current	12 A			

cULus Recognized 				
Use group	B	D		
mm ² /AWG/kcmil	30-12	30-12		
Voltage	300 V	150 V		
Current	15 A	15 A		

1754627 MSTB 2,5/11-ST

EAC ENE

1754627 MSTB 2,5/11-ST**16 Commercial Data**

Order No.	1754627
Type	MSTB 2,5/11-ST
Pieces per package	50
Net weight	18.142 g
GTIN	4017918028794
	Information that applies locally, see link on page 1
Country of origin	Information that applies locally, see link on page 1

17 corresponding headers


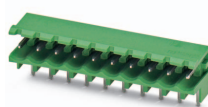
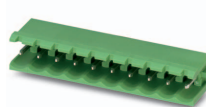
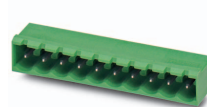

Order No.	Type
1736027	MSTBW 2,5/11-G
1753615	MSTBV 2,5/11-G
1754614	MSTB 2,5/11-G
1755590	MSTBVA 2,5/11-G
1757556	MSTBA 2,5/11-G
1762787	MDSTB 2,5/11-G1
1762936	MDSTBV 2,5/11-G1
1768273	MSTB 2,5/11-G-LA
1769324	SMSTB 2,5/11-G
1769890	SMSTBA 2,5/11-G
1770575	MSTBA 2,5/11-G-LA
1845879	MDSTBVA 2,5/11-G
1846027	MDSTBV 2,5/11-G
1846454	MDSTB 2,5/11-G
1846603	MDSTBA 2,5/11-G
1846904	MDSTBW 2,5/11-G
1899935	EMSTBA 2,5/11-G
1914946	EMSTBVA 2,5/11-G

18 Accessories

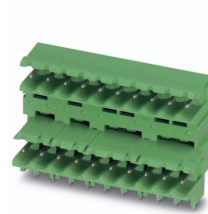
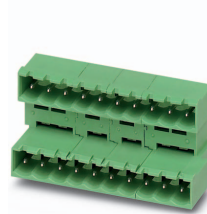
Description	Order No.	Type
Actuation tool, for ST terminal blocks, insulated, also suitable for use as a bladed screwdriver, size: 0.6 x 3.5 x 100 mm, 2-component grip, with non-slip grip	1205053	SZS 0,6X3,5
	0804183	SK 5/3,8:FORTL.ZAHLEN
	1783805	KGS-MSTB 2,5/11
Coding profile, is inserted into the slot on the plug or inverted header, red insulating material	1734634	CP-MSTB
Insertion bridge, fully insulated, for connectors with 5.0 or 5.08 mm pitch, no. of positions: 2	1733169	EBP 2- 5

1754627 MSTB 2,5/11-ST

19 Combination tests

					
	MSTB 2,5/..-ST	MSTBW 2,5/..-G	MSTB 2,5/..-G	MSTBA 2,5/..-G	SMSTB 2,5/..-G
Specification		IEC 61984	IEC 61984	IEC 61984	IEC 61984
Mechanical tests (A)					
Insertion/withdrawal force per position		approx. 8 N / 7 N		approx. 8 N / 6 N	
Polarization when inserted Requirement >20 N		Test passed		Test passed	
Contact holder in insert Requirements >20 N		Test passed		Test passed	
Durability tests (B)					
Contact resistance R ₁		1.4 mΩ		1.4 mΩ	
Insertion/withdrawal cycles		25		25	
Contact resistance R ₂		1.5 mΩ		1.5 mΩ	
Rated impulse voltage at sea level Voltage waveform ≥ (1.2/50 μs)		4.8 kV		4.8 kV	
Power-frequency withstand voltage Voltage waveform ≥ (50/60 Hz)		2.21 kV		2.21 kV	
Insulation resistance Requirements > 5 MΩ		11 TΩ		> 1 TΩ	
Thermal tests (C)					
Tested number of positions		20		24	
Tested conductor cross section		2.5 mm ²		2.5 mm ²	
Test current		12 A DC		12 A	
Upper limiting temperature Requirements < 100°C		Test passed		Test passed	
Climatic tests (D)					
Test sequence 1: low temperature storage		-40 °C/2 h		-40 °C/2 h	
Test sequence 2: heat storage		100 °C/168 h		100 °C/168 h	
Test sequence 3: noxious gas storage (ISO 6988)		0.2 dm ³ SO ₂ on 300 dm ³ / 40 °C/1 cycle		0.2 dm ³ SO ₂ on 300 dm ³ / 40 °C/1 cycle	
Rated impulse voltage at sea level Voltage waveform ≥ (1.2/50 μs)		4.8 kV		4.8 kV	
Power-frequency withstand voltage Voltage waveform ≥ (50/60 Hz)		2.21 kV		2.21 kV	
Environmental and endurance tests (E)					
Specification		IEC 61984:2008-10		IEC 61984:2008-10	
Degree of protection		Finger safety with IP20 test finger		Finger safety with IP20 test finger	

1754627 MSTB 2,5/11-ST

**MSTB 2,5/11-ST****MDSTB 2,5/11-G****MDSTBA 2,5/11-G****MDSTBW 2,5/11-G****MDSTB 2,5/11-G1**

Specification

IEC 61984

IEC 61984

IEC 61984

IEC 61984

Mechanical tests (A)

Insertion/withdrawal force per position

approx. 8 N / 6 N

approx. 8 N / 6 N

Polarization when inserted
Requirement >20 N

Test passed

Test passed

Contact holder in insert
Requirements >20 N

Test passed

Test passed

Durability tests (B)Contact resistance R_1 1.8 m Ω 1.7 m Ω

Insertion/withdrawal cycles

25

25

Contact resistance R_2 1.8 m Ω 1.8 m Ω Rated impulse voltage at sea level
Voltage waveform $\geq (1.2/50 \mu\text{s})$

4.8 kV

4.8 kV

Power-frequency withstand voltage
Voltage waveform $\geq (50/60 \text{ Hz})$

2.21 kV

2.21 kV

Insulation resistance
Requirements > 5 M Ω > 80 G Ω > 50 G Ω **Thermal tests (C)**

Tested number of positions

12

12

Tested conductor cross section

2.5 mm²2.5 mm²

Test current

10 A

10 A

Upper limiting temperature
Requirements < 100°C

Test passed

Test passed

Climatic tests (D)

Test sequence 1: low temperature storage

-40 °C/2 h

-40 °C/2 h

Test sequence 2: heat storage

100 °C/168 h

100 °C/168 h

Test sequence 3: noxious gas storage
(ISO 6988)0.2 dm³ SO₂ on 300 dm³/
40 °C/1 cycle0.2 dm³ SO₂ on 300 dm³/
40 °C/1 cycleRated impulse voltage at sea level
Voltage waveform $\geq (1.2/50 \mu\text{s})$

4.8 kV

4.8 kV

Power-frequency withstand voltage
Voltage waveform $\geq (50/60 \text{ Hz})$

2.21 kV

2.21 kV

Environmental and endurance tests (E)

Specification

IEC 61984:2008-10

IEC 61984:2008-10

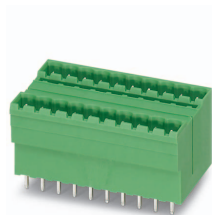
Degree of protection

Finger safety with IP20
test fingerFinger safety with IP20
test finger

1754627 MSTB 2,5/11-ST



MSTB 2,5/...-ST



MDSTBV 2,5/...-G1



MDSTBV 2,5/...-G



MDSTBVA 2,5/...-G



DFK-MSTB 2,5/...-G

Specification	IEC 61984	IEC 61984	IEC 61984	IEC 61984
Mechanical tests (A)				
Insertion/withdrawal force per position		approx. 8 N / 6 N		
Polarization when inserted Requirement >20 N		Test passed		
Contact holder in insert Requirements >20 N		Test passed		
Durability tests (B)				
Insertion/withdrawal cycles		25		
Rated impulse voltage at sea level Voltage waveform $\geq (1.2/50 \mu\text{s})$		4.8 kV		
Power-frequency withstand voltage Voltage waveform $\geq (50/60 \text{ Hz})$		2.21 kV		
Insulation resistance Requirements > 5 M Ω		> 0.2 T Ω		
Thermal tests (C)				
Tested number of positions		12		
Tested conductor cross section		2.5 mm ²		
Test current		10 A		
Upper limiting temperature Requirements < 100°C		Test passed		
Climatic tests (D)				
Test sequence 1: low temperature storage		-40 °C/2 h		
Test sequence 2: heat storage		100 °C/168 h		
Test sequence 3: noxious gas storage (ISO 6988)		0.2 dm ³ SO ₂ on 300 dm ³ / 40 °C/1 cycle		
Rated impulse voltage at sea level Voltage waveform $\geq (1.2/50 \mu\text{s})$		4.8 kV		
Power-frequency withstand voltage Voltage waveform $\geq (50/60 \text{ Hz})$		2.21 kV		
Environmental and endurance tests (E)				
Specification		IEC 61984:2008-10		
Degree of protection		Finger safety with IP20 test finger		

1754627 MSTB 2,5/11-ST

**MSTB 2,5/11-ST****MSTBVA 2,5/11-G****MSTBO 2,5/11-G1R****SMSTBA 2,5/11-G****MSTBO 2,5/11-G1L**

Specification

IEC 61984

IEC 61984

IEC 61984

IEC 61984

Mechanical tests (A)

Insertion/withdrawal force per position

approx. 8 N / 6 N

approx. 8 N / 6 N

approx. 8 N / 6 N

approx. 8 N / 6 N

Polarization when inserted
Requirement >20 N

Test passed

Test passed

Test passed

Test passed

Contact holder in insert
Requirements >20 N

Test passed

Test passed

Test passed

Test passed

Durability tests (B)Contact resistance R_1 2.5 m Ω 1.6 m Ω 1.3 m Ω 1.5 m Ω

Insertion/withdrawal cycles

25

25

25

25

Contact resistance R_2 2.5 m Ω 1.6 m Ω 1.4 m Ω 1.5 m Ω Rated impulse voltage at sea level
Voltage waveform \geq (1.2/50 μ s)

4.8 kV

4.8 kV

4.8 kV

4.8 kV

Power-frequency withstand voltage
Voltage waveform \geq (50/60 Hz)

2.21 kV

2.21 kV

2.21 kV

2.21 kV

Insulation resistance
Requirements > 5 M Ω > 0.4 T Ω > 0.3 T Ω > 0.1 T Ω > 0.3 T Ω **Thermal tests (C)**

Tested number of positions

24

4

24

4

Tested conductor cross section

2.5 mm²2.5 mm²2.5 mm²2.5 mm²

Test current

Upper limiting temperature
Requirements < 100°C

Test passed

Test passed

Test passed

Test passed

Climatic tests (D)

Test sequence 1: low temperature storage

-40 °C/2 h

-40 °C/2 h

-40 °C/2 h

-40 °C/2 h

Test sequence 2: heat storage

100 °C/168 h

100 °C/168 h

100 °C/168 h

100 °C/168 h

Test sequence 3: noxious gas storage
(ISO 6988)0.2 dm³ SO₂ on 300 dm³/
40 °C/1 cycle0.2 dm³ SO₂ on 300 dm³/
40 °C/1 cycle0.2 dm³ SO₂ on 300 dm³/
40 °C/1 cycle0.2 dm³ SO₂ on 300 dm³/
40 °C/1 cycleRated impulse voltage at sea level
Voltage waveform \geq (1.2/50 μ s)

4.8 kV

4.8 kV

4.8 kV

4.8 kV

Power-frequency withstand voltage
Voltage waveform \geq (50/60 Hz)

2.21 kV

2.21 kV

2.21 kV

2.21 kV

Environmental and endurance tests (E)

Specification

IEC 61984:2008-10

IEC 61984:2008-10

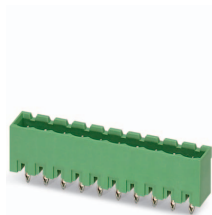
IEC 61984:2008-10

IEC 61984:2008-10

Degree of protection

Finger safety with IP20
test fingerFinger safety with IP20
test fingerFinger safety with IP20
test fingerFinger safety with IP20
test finger

1754627 MSTB 2,5/11-ST

**MSTB 2,5/11-ST****EMSTBVA 2,5/11-G****CCVA 2,5/11-G**

Specification

DIN VDE 0627 (in parts)

IEC 61984

Mechanical tests (A)

Insertion/withdrawal force per position

approx. 5 N / 4 N

approx. 8 N / 6 N

Polarization when inserted
Requirement >20 N

Test passed

Contact holder in insert
Requirements >20 N

Test passed

Durability tests (B)Contact resistance R_1 1.1 m Ω 1.2 m Ω

Insertion/withdrawal cycles

100

25

Contact resistance R_2 1.5 m Ω 1.2 m Ω Rated impulse voltage at sea level
Voltage waveform \geq (1.2/50 μ s)

4.8 kV

4.8 kV

Power-frequency withstand voltage
Voltage waveform \geq (50/60 Hz)

2.21 kV

2.21 kV

Insulation resistance
Requirements > 5 M Ω > 8 T Ω > 1 T Ω **Thermal tests (C)**

Tested number of positions

6

24

Tested conductor cross section

2.5 mm²2.5 mm²

Test current

12 A

12 A

Upper limiting temperature
Requirements < 100°C

Test passed

Climatic tests (D)

Test sequence 1: low temperature storage

-40 °C/2 h

-40 °C/2 h

Test sequence 2: heat storage

100 °C/168 h

100 °C/168 h

Test sequence 3: noxious gas storage
(ISO 6988)0.2 dm³ SO₂ on 300 dm³/
40 °C/1 cycle0.2 dm³ SO₂ on 300 dm³/
40 °C/1 cycleRated impulse voltage at sea level
Voltage waveform \geq (1.2/50 μ s)

4.8 kV

4.8 kV

Power-frequency withstand voltage
Voltage waveform \geq (50/60 Hz)

2.21 kV

2.21 kV

Environmental and endurance tests (E)

Specification

IEC 61984:2008-10

IEC 61984:2008-10

Degree of protection

Finger safety with IP20
test fingerFinger safety with IP20
test finger