



Chipsmall Limited consists of a professional team with an average of over 10 year of expertise in the distribution of electronic components. Based in Hongkong, we have already established firm and mutual-benefit business relationships with customers from,Europe,America and south Asia,supplying obsolete and hard-to-find components to meet their specific needs.

With the principle of “Quality Parts,Customers Priority,Honest Operation,and Considerate Service”,our business mainly focus on the distribution of electronic components. Line cards we deal with include Microchip,ALPS,ROHM,Xilinx,Pulse,ON,Everlight and Freescale. Main products comprise IC,Modules,Potentiometer,IC Socket,Relay,Connector.Our parts cover such applications as commercial,industrial, and automotives areas.

We are looking forward to setting up business relationship with you and hope to provide you with the best service and solution. Let us make a better world for our industry!



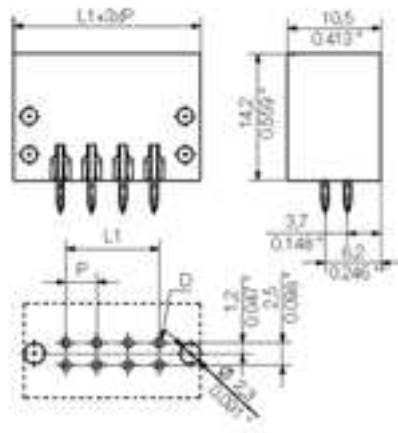
Contact us

Tel: +86-755-8981 8866 Fax: +86-755-8427 6832

Email & Skype: info@chipsmall.com Web: www.chipsmall.com

Address: A1208, Overseas Decoration Building, #122 Zhenhua RD., Futian, Shenzhen, China





General ordering data

Order No.	1757080000
Part designation	S2L 3.5/30/180F3.5AU OR
Version	PCB plug-in connector, Male connectors, Soldered connection, Pitch: 3.50 mm, No. of poles: 30, 180°, Box
EAN	4032248042876
Qty.	20 pc(s).

System parameters

Fitted to PCB	Soldered connection
Outgoing elbow	180°
Pitch	3.5 mm
Pitch in inch	0.138 inch
No. of poles	30
Solder pin length	3.5 mm
Can be coded	Yes
No. of rows	2
No. of solder pins per pole	1
Dia. of fitting hole	1.3 mm
Fitting hole tolerance	+ 0.1 mm
L1 in mm	49 mm
L1 in inch	1.929 inch
Electric shock protection to DIN VDE 0470	IP 10
Electric shock protection to DIN VDE 0470	Safe from back-of-hand touch

Material data

Insulating material	PBT
Colour	orange
colour chart	Similar to RAL 2000
Insulating material group	IIIa
Flammability class UL 94	V-0
CTI	≥ 200
Contact base material	Copper alloy
Contact surface	gold-plated

Material data

Constant operating temp., min.	-25 °C
Constant operating temp., max.	100
Storage temperature, min.	-25 °C
Storage temperature, max.	55 °C
Max. relative humidity during storage	93 %

DIN IEC rating data

Rated current, min. No. pins (Tu=20°C)	10 A
Rated current, max. No. pins (Tu=20°C)	10 A
Rated current, min. No. pins (Tu=40°C)	9 A
Rated current, max. No. pins (Tu=40°C)	8.5 A
Rated voltage for overvoltage class/pollution severity III/3	80 V
Rated impulse withstand voltage for overvoltage class/pollution severity III/3	2.5 kV
Rated voltage for overvoltage class/pollution severity III/2	125 V
Rated impulse withstand voltage for overvoltage class/pollution severity III/2	2.5 kV
Rated voltage for overvoltage class/pollution severity II/2	250 V
Rated impulse withstand voltage for overvoltage class/pollution severity II/2	2.5 kV
Short-time withstand current resistance	3 x 1s with 77 A

CSA rating data

Rated voltage (Use group D)	50 V
Rated current (Use group D)	5 A

UL 1059 rating data

Rated voltage (Use group D)	150 V
Rated current (Use group D)	7 A

Approvals

Approvals institutes



Downloads

CAD Library (P-CAD Format - Standard)	S2L-SMT.LIB
---------------------------------------	-------------

Classifications

ETIM 2.0	NK
ETIM 3.0	EC001284
eClass 4.1	27-26-07-01
eClass 5.0	27-26-07-01
eClass 5.1	27-26-07-01

Similar products

Order No.	Part designation	Version
1729430000	S2L 3.5/6/180F3.5SN OR	PCB plug-in connector, Male connectors, Soldered connection, Pitch: 3.50 mm, No. of poles: 6, 180°, Box
1729590000	S2L 3.5/6/180F3.5SN SW	PCB plug-in connector, Male connectors, Soldered connection, Pitch: 3.50 mm, No. of poles: 6, 180°, Box
1756960000	S2L 3.5/6/180F3.5AU OR	PCB plug-in connector, Male connectors, Soldered connection, Pitch: 3.50 mm, No. of poles: 6, 180°, Box
1729440000	S2L 3.5/8/180F3.5SN OR	PCB plug-in connector, Male connectors, Soldered connection, Pitch: 3.50 mm, No. of poles: 8, 180°, Box
1729600000	S2L 3.5/8/180F3.5SN SW	PCB plug-in connector, Male connectors, Soldered connection, Pitch: 3.50 mm, No. of poles: 8, 180°, Box
1756970000	S2L 3.5/8/180F3.5AU OR	PCB plug-in connector, Male connectors, Soldered connection, Pitch: 3.50 mm, No. of poles: 8, 180°, Box
1729450000	S2L 3.5/10/180F3.5SN OR	PCB plug-in connector, Male connectors, Soldered connection, Pitch: 3.50 mm, No. of poles: 10, 180°, Box
1756980000	S2L 3.5/10/180F3.5AU OR	PCB plug-in connector, Male connectors, Soldered connection, Pitch: 3.50 mm, No. of poles: 10, 180°, Box
1757140000	S2L 3.5/10/180F3.5AU SW	PCB plug-in connector, Male connectors, Soldered connection, Pitch: 3.50 mm, No. of poles: 10, 180°, Box
1729460000	S2L 3.5/12/180F3.5SN OR	PCB plug-in connector, Male connectors, Soldered connection, Pitch: 3.50 mm, No. of poles: 12, 180°, Box
1729620000	S2L 3.5/12/180F3.5SN SW	PCB plug-in connector, Male connectors, Soldered connection, Pitch: 3.50 mm, No. of poles: 12, 180°, Box
1756990000	S2L 3.5/12/180F3.5AU OR	PCB plug-in connector, Male connectors, Soldered connection, Pitch: 3.50 mm, No. of poles: 12, 180°, Box
1729470000	S2L 3.5/14/180F3.5SN OR	PCB plug-in connector, Male connectors, Soldered connection, Pitch: 3.50 mm, No. of poles: 14, 180°, Box
1729630000	S2L 3.5/14/180F3.5SN SW	PCB plug-in connector, Male connectors, Soldered connection, Pitch: 3.50 mm, No. of poles: 14, 180°, Box
1729480000	S2L 3.5/16/180F3.5SN OR	PCB plug-in connector, Male connectors, Soldered connection, Pitch: 3.50 mm, No. of poles: 16, 180°, Box
1729640000	S2L 3.5/16/180F3.5SN SW	PCB plug-in connector, Male connectors, Soldered connection, Pitch: 3.50 mm, No. of poles: 16, 180°, Box
1757170000	S2L 3.5/16/180F3.5AU SW	PCB plug-in connector, Male connectors, Soldered connection, Pitch: 3.50 mm, No. of poles: 16, 180°, Box
1729490000	S2L 3.5/18/180F3.5SN OR	PCB plug-in connector, Male connectors, Soldered connection, Pitch: 3.50 mm, No. of poles: 18, 180°, Box
1757020000	S2L 3.5/18/180F3.5AU OR	PCB plug-in connector, Male connectors, Soldered connection, Pitch: 3.50 mm, No. of poles: 18, 180°, Box
1729500000	S2L 3.5/20/180F3.5SN OR	PCB plug-in connector, Male connectors, Soldered connection, Pitch: 3.50 mm, No. of poles: 20, 180°, Box
1729660000	S2L 3.5/20/180F3.5SN SW	PCB plug-in connector, Male connectors, Soldered connection, Pitch: 3.50 mm, No. of poles: 20, 180°, Box
1757030000	S2L 3.5/20/180F3.5AU OR	PCB plug-in connector, Male connectors, Soldered connection, Pitch: 3.50 mm, No. of poles: 20, 180°, Box
1729510000	S2L 3.5/22/180F3.5SN OR	PCB plug-in connector, Male connectors, Soldered connection, Pitch: 3.50 mm, No. of poles: 22, 180°, Box
1757200000	S2L 3.5/22/180F3.5AU SW	PCB plug-in connector, Male connectors, Soldered connection, Pitch: 3.50 mm, No. of poles: 22, 180°, Box

1729520000	S2L 3.5/24/180F3.5SN OR	PCB plug-in connector, Male connectors, Soldered connection, Pitch: 3.50 mm, No. of poles: 24, 180°, Box
1729680000	S2L 3.5/24/180F3.5SN SW	PCB plug-in connector, Male connectors, Soldered connection, Pitch: 3.50 mm, No. of poles: 24, 180°, Box
1757050000	S2L 3.5/24/180F3.5AU OR	PCB plug-in connector, Male connectors, Soldered connection, Pitch: 3.50 mm, No. of poles: 24, 180°, Box
1729530000	S2L 3.5/26/180F3.5SN OR	PCB plug-in connector, Male connectors, Soldered connection, Pitch: 3.50 mm, No. of poles: 26, 180°, Box
1729690000	S2L 3.5/26/180F3.5SN SW	PCB plug-in connector, Male connectors, Soldered connection, Pitch: 3.50 mm, No. of poles: 26, 180°, Box
1729540000	S2L 3.5/28/180F3.5SN OR	PCB plug-in connector, Male connectors, Soldered connection, Pitch: 3.50 mm, No. of poles: 28, 180°, Box
1729700000	S2L 3.5/28/180F3.5SN SW	PCB plug-in connector, Male connectors, Soldered connection, Pitch: 3.50 mm, No. of poles: 28, 180°, Box
1757070000	S2L 3.5/28/180F3.5AU OR	PCB plug-in connector, Male connectors, Soldered connection, Pitch: 3.50 mm, No. of poles: 28, 180°, Box
1729550000	S2L 3.5/30/180F3.5SN OR	PCB plug-in connector, Male connectors, Soldered connection, Pitch: 3.50 mm, No. of poles: 30, 180°, Box
1729560000	S2L 3.5/32/180F3.5SN OR	PCB plug-in connector, Male connectors, Soldered connection, Pitch: 3.50 mm, No. of poles: 32, 180°, Box
1729720000	S2L 3.5/32/180F3.5SN SW	PCB plug-in connector, Male connectors, Soldered connection, Pitch: 3.50 mm, No. of poles: 32, 180°, Box
1757250000	S2L 3.5/32/180F3.5AU SW	PCB plug-in connector, Male connectors, Soldered connection, Pitch: 3.50 mm, No. of poles: 32, 180°, Box
1729570000	S2L 3.5/34/180F3.5SN OR	PCB plug-in connector, Male connectors, Soldered connection, Pitch: 3.50 mm, No. of poles: 34, 180°, Box
1757260000	S2L 3.5/34/180F3.5AU SW	PCB plug-in connector, Male connectors, Soldered connection, Pitch: 3.50 mm, No. of poles: 34, 180°, Box
1729580000	S2L 3.5/36/180F3.5SN OR	PCB plug-in connector, Male connectors, Soldered connection, Pitch: 3.50 mm, No. of poles: 36, 180°, Box
1729740000	S2L 3.5/36/180F3.5SN SW	PCB plug-in connector, Male connectors, Soldered connection, Pitch: 3.50 mm, No. of poles: 36, 180°, Box