



Chipsmall Limited consists of a professional team with an average of over 10 year of expertise in the distribution of electronic components. Based in Hongkong, we have already established firm and mutual-benefit business relationships with customers from,Europe,America and south Asia,supplying obsolete and hard-to-find components to meet their specific needs.

With the principle of “Quality Parts,Customers Priority,Honest Operation,and Considerate Service”,our business mainly focus on the distribution of electronic components. Line cards we deal with include Microchip,ALPS,ROHM,Xilinx,Pulse,ON,Everlight and Freescale. Main products comprise IC,Modules,Potentiometer,IC Socket,Relay,Connector.Our parts cover such applications as commercial,industrial, and automotives areas.

We are looking forward to setting up business relationship with you and hope to provide you with the best service and solution. Let us make a better world for our industry!



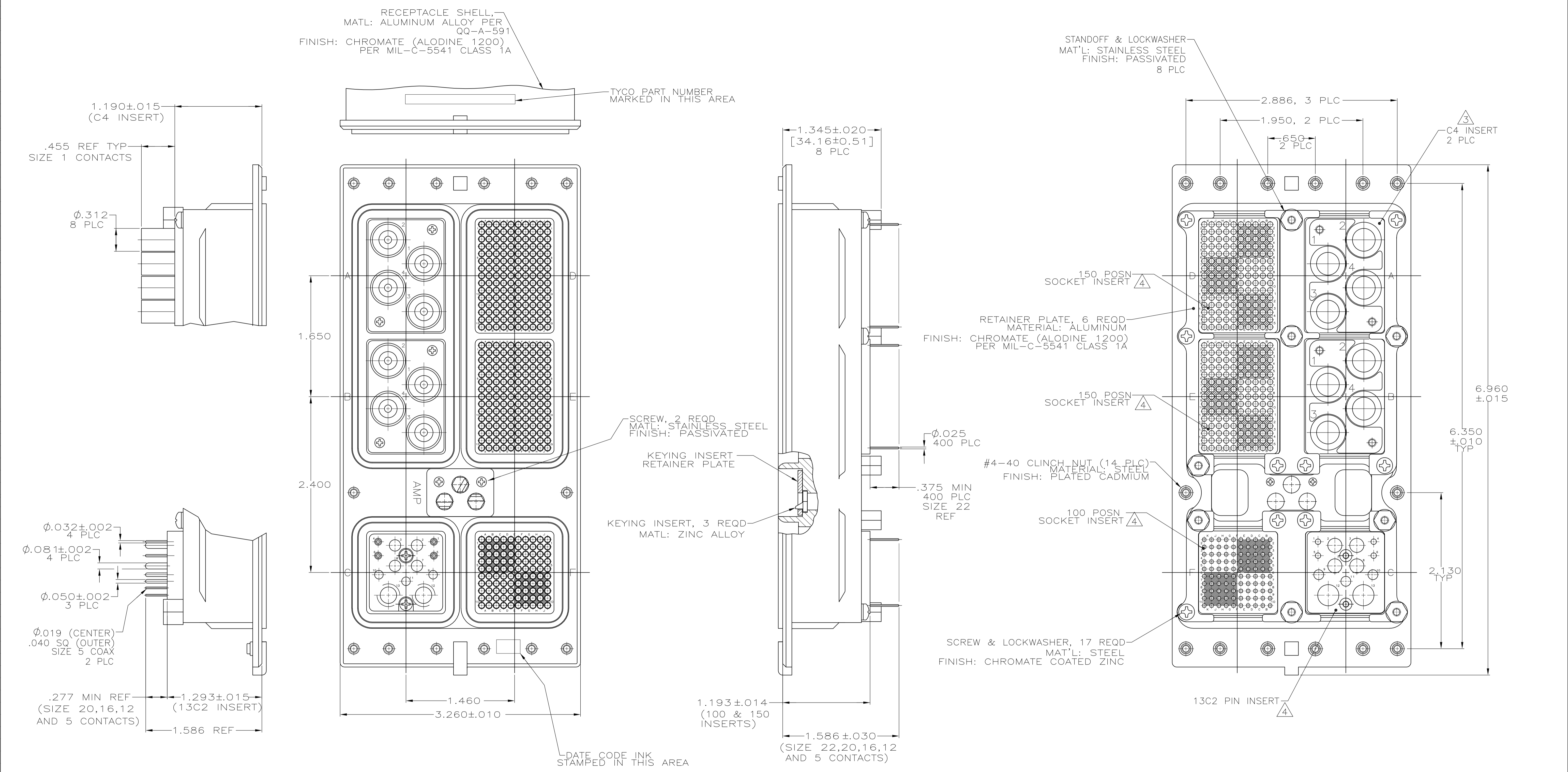
Contact us

Tel: +86-755-8981 8866 Fax: +86-755-8427 6832

Email & Skype: info@chipsmall.com Web: www.chipsmall.com

Address: A1208, Overseas Decoration Building, #122 Zhenhua RD., Futian, Shenzhen, China





- FOLLOWING CONTACTS ARE INCLUDED AND LOADED:
 SIZE 22: AMP P/N 211431-6; QTY=400
 SIZE 20: AMP P/N 446546-3; QTY=4
 SIZE 16: AMP P/N 446547-3; QTY=3
 SIZE 12: AMP P/N 446548-3; QTY=4
 SIZE 5 COAX: 447335-2; QTY=2
 SIZE 1 COAX WITH OSP ADAPTER: 1218713-1; QTY=8
 - POLARIZING KEYS ARE INSTALLED IN POSITION 40.
- △ INSERT MATERIAL: DIE CAST ALUMINUM PER ASTM-B-85.
 INSERT FINISH: CHROMATE PER MIL-C-5541
- △ INSERT MATERIAL: GLASS EPOXY OR POLYPHENYLENE SULFIDE
 PER MIL-M-24519.

1757225-1
 PART NUMBER

THIS DRAWING IS A CONTROLLED DOCUMENT.		DMN C.C.THOMAS 7-9-04	Tyco Electronics Corporation Harrisburg, PA 17105-3608																		
DIMENSIONS: INCHES		CHK K.HOGAN 7-9-04	NAME S.GLATFELTER																		
TOLERANCES UNLESS OTHERWISE SPECIFIED:		APVD S.GLATFELTER 7-9-04	PRODUCT SPEC																		
<table border="1"> <tr><td>0 PLC</td><td>±</td><td>-</td></tr> <tr><td>1 PLC</td><td>±</td><td>-</td></tr> <tr><td>2 PLC</td><td>±</td><td>-</td></tr> <tr><td>3 PLC</td><td>±</td><td>-</td></tr> <tr><td>4 PLC</td><td>±</td><td>-</td></tr> <tr><td>ANGLES</td><td>±</td><td>-</td></tr> </table>		0 PLC	±	-	1 PLC	±	-	2 PLC	±	-	3 PLC	±	-	4 PLC	±	-	ANGLES	±	-	APPLICATION SPEC	
0 PLC	±	-																			
1 PLC	±	-																			
2 PLC	±	-																			
3 PLC	±	-																			
4 PLC	±	-																			
ANGLES	±	-																			
MATERIAL SEE CALLOUTS		WEIGHT	SIZE A1	CAGE CODE 00779																	
FINISH SEE CALLOUTS		RESTRICTED TO	DRAWING NO 1757225																		
		CUSTOMER DRAWING	SCALE 1:1	SHEET 1 of 1																	