



Chipsmall Limited consists of a professional team with an average of over 10 year of expertise in the distribution of electronic components. Based in Hongkong, we have already established firm and mutual-benefit business relationships with customers from,Europe,America and south Asia,supplying obsolete and hard-to-find components to meet their specific needs.

With the principle of “Quality Parts,Customers Priority,Honest Operation,and Considerate Service”,our business mainly focus on the distribution of electronic components. Line cards we deal with include Microchip,ALPS,ROHM,Xilinx,Pulse,ON,Everlight and Freescale. Main products comprise IC,Modules,Potentiometer,IC Socket,Relay,Connector.Our parts cover such applications as commercial,industrial, and automotives areas.

We are looking forward to setting up business relationship with you and hope to provide you with the best service and solution. Let us make a better world for our industry!



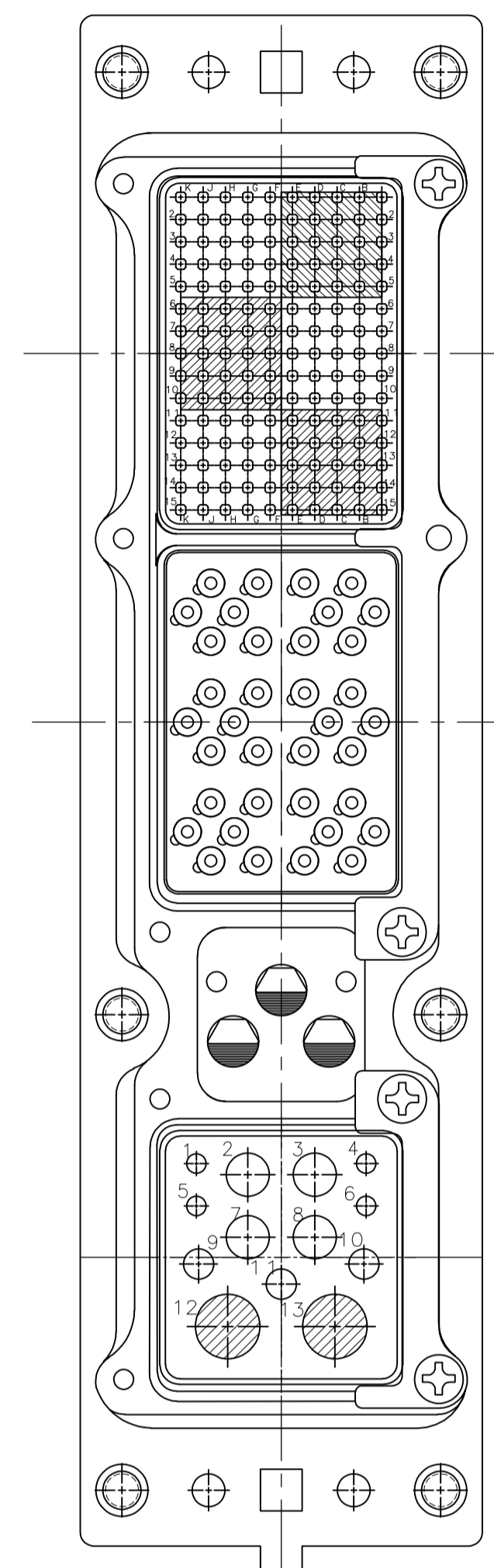
Contact us

Tel: +86-755-8981 8866 Fax: +86-755-8427 6832

Email & Skype: info@chipsmall.com Web: www.chipsmall.com

Address: A1208, Overseas Decoration Building, #122 Zhenhua RD., Futian, Shenzhen, China





1757544-6 S/A 1757544-3
 1757544-7 S/A 1757544-4
 EXCEPT ONLY 2 INSERT RETENTION PLATES
 AND 4 #1 PHILLIPS HEAD
 RETENTION PLATE SCREWS

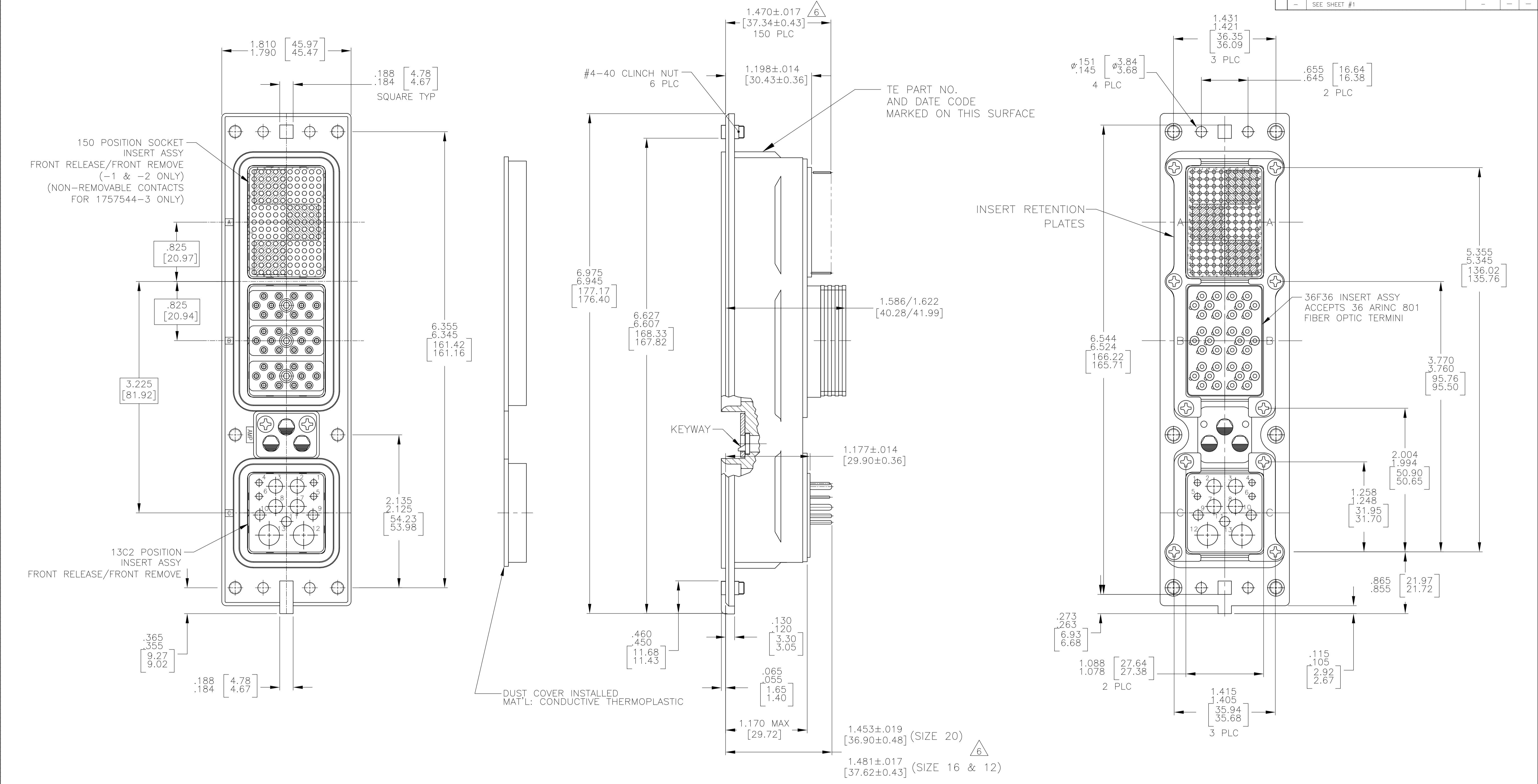
- CONNECTOR DIMENSIONS ARE PER ARINC 600 SPECIFICATION.
- CONNECTOR IS SUPPLIED WITH CONTACTS (PER TABLE) ASSEMBLED AS SHOWN.
- KEYING SHOWN IN POSITION "01" FOR ILLUSTRATION ONLY. CONNECTORS SHIPPED WITH KEYING INSTALLED IN POSITION PER TABLE. FOR POSITION "00" KEYING HARDWARE SHIPPED UNASSEMBLED.
- FRONT & REAR VIEWS ARE SHOWN WITHOUT CONTACTS.
- MODULE B (36F36) IS SUPPLIED WITHOUT CONTACTS. MUST BE ORDERED SEPARATELY.
- ⁶ DIMENSION APPLIES WITH CONTACTS FULLY SEATED TO REAR OF INSERT.
- ALL ASSEMBLIES ARE RoHS COMPLIANT.
- ⁸ PART NOS 1757544-1 AND -2 ARE OBSOLETE AND SUPERSEDED BY 1757544-3.

COMPONENT	MATERIAL	FINISH
SHELL	DIE CAST ALUMINUM PER ASTM-B-85	ELECTROLESS NICKEL PER MIL-C-26074
INSERT RETENTION PLATES	ALUMINUM ALLOY PER ASTM-B-209	ELECTROLESS NICKEL PER MIL-C-26074
FLAT HEAD SCREWS AND LOCKWASHERS	STAINLESS STEEL	PASSIVATED
POLARIZING KEYS	ZINC ALLOY PER ASTM-B-86	-
150 & 13C2 INSERTS	THERMOSET OR THERMOPLASTIC PPS PER MIL-M-24519	-
POLARIZING KEY RETAINING PLATE	ALUMINUM ALLOY PER ASTM-B-209	BLUE ANODIZED PER MIL-A-8625
36F36 INSERT	SEE TABLE	SEE TABLE
CLINCH NUT	STEEL	TRIVALENT CHROMATE OVER ZINC PLATE WITH MOLY LUBE

--	THERMOPLASTIC EPOXY	"00"	MODULE A SZ 22 NON-REMOVABLE SOCKET CONTACT MODULE C 1-448138-2 (#20 POSTED) 1-448139-1 (#16 POSTED) 448140-3 (#12 POSTED) 1484205-1 (SIZE 5 FILLER PLUG)	1757544-7	
--	THERMOPLASTIC EPOXY	"01"	MODULE A SZ 22 NON-REMOVABLE SOCKET CONTACT MODULE C 1-448138-2 (#20 POSTED) 1-448139-1 (#16 POSTED) 448140-3 (#12 POSTED) 1484205-1 (SIZE 5 FILLER PLUG)	1757544-6	
--	THERMOPLASTIC EPOXY	"00"	MODULE A SZ 22 NON-REMOVABLE SOCKET CONTACT MODULE C 1-448138-2 (#20 POSTED) 1-448139-1 (#16 POSTED) 448140-3 (#12 POSTED) 1484205-1 (SIZE 5 FILLER PLUG)	1757544-4	
--	THERMOPLASTIC EPOXY	"01"	MODULE A SZ 22 NON-REMOVABLE SOCKET CONTACT MODULE C 1-448138-2 (#20 POSTED) 1-448139-1 (#16 POSTED) 448140-3 (#12 POSTED) 1484205-1 (SIZE 5 FILLER PLUG)	1757544-3	
--	THERMOSET EPOXY	"01"	MODULE A 211431-4 (SIZE 22) MODULE C 1-448138-2 (#20 POSTED) 1-448139-1 (#16 POSTED) 448140-3 (#12 POSTED) 1484205-1 (SIZE 5 FILLER PLUG)	1757544-2 ⁸	
	ANODIC OXIDATION PER MIL-A-8625	ALUMINUM ALLOY	"01"	MODULE A 211431-4 (SIZE 22) MODULE C 1-448138-2 (#20 POSTED) 1-448139-1 (#16 POSTED) 448140-3 (#12 POSTED) 1484205-1 (SIZE 5 FILLER PLUG)	1757544-1 ⁸
36F36 FINISH	36F36 MATERIAL	KEYING POSITION	CONTACTS & FILLER PLUGS INCLUDED AND INSTALLED	PART NUMBER	

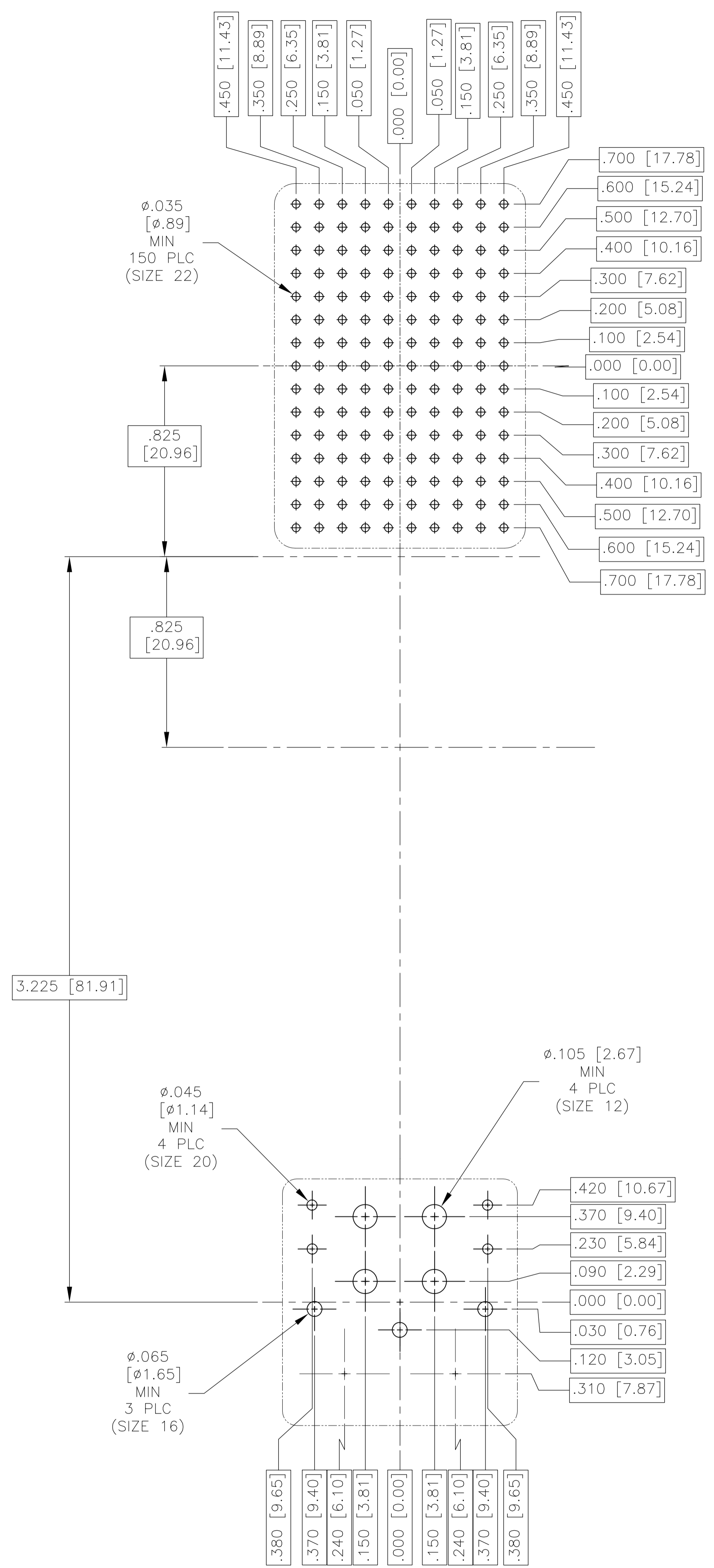
THIS DRAWING IS A CONTROLLED DOCUMENT.		DIN C.C.THOMAS 12-1-04	TE Connectivity	
DIMENSIONS: INCHES		12-1-04		
TOLERANCES UNLESS OTHERWISE SPECIFIED:		APVD S.GLATFELTER 12-1-04	NAME RCPT ASSY, SIZE 2, ARINC 600 (150/36F36/13C2)	
0 PLC ± -		PRODUCT SPEC	APPLICATION SPEC	
1 PLC ± -		APPLICATION SPEC	SIZE CASE CODE DRAWING NO	
2 PLC ± -		RESTRICTED TO	A1 00779 C=1757544	
3 PLC ± -		WEIGHT	CUSTOMER DRAWING	
4 PLC ± -		SCALE 3:2	SHEET 1 OF 3	
ANGLES ± -		REV P		

LOC		DIST		REVISIONS			
P	LTR	DESCRIPTION	DATE	DN	APVD		
-	-	SEE SHEET #1	-	-	-	-	-



THIS DRAWING IS A CONTROLLED DOCUMENT.		DN C.C.THOMAS 12-1-04	TE Connectivity																		
DIMENSIONS: INCHES		CHK S.GLATFELTER 12-1-04																			
TOLERANCES UNLESS OTHERWISE SPECIFIED:		APVD S.GLATFELTER 12-1-04	NAME RCPT ASSY, SIZE 2, ARINC 600 (150/36F36/13C2)																		
<table border="1"> <tr><td>0 PLC</td><td>±</td><td>-</td></tr> <tr><td>1 PLC</td><td>±</td><td>-</td></tr> <tr><td>2 PLC</td><td>±</td><td>-</td></tr> <tr><td>3 PLC</td><td>±</td><td>-</td></tr> <tr><td>4 PLC</td><td>±</td><td>-</td></tr> <tr><td>ANGLES</td><td>±</td><td>-</td></tr> </table>		0 PLC	±	-	1 PLC	±	-	2 PLC	±	-	3 PLC	±	-	4 PLC	±	-	ANGLES	±	-	APPLICATION SPEC	RESTRICTED TO
0 PLC	±	-																			
1 PLC	±	-																			
2 PLC	±	-																			
3 PLC	±	-																			
4 PLC	±	-																			
ANGLES	±	-																			
MATERIAL SEE TABLE	FINISH SEE TABLE	WEIGHT	SIZE A1																		
CUSTOMER DRAWING		SCALE 3:2	SHEET 2 OF 3																		
		DRAWING NO. 00779	REV P																		
		CAGE CODE 1757544																			

LOC		DIST		REVISIONS			
P	LTR	DESCRIPTION	DATE	DNW	APVD		
-	-	SEE SHEET 1	-	-	-		



RECOMMENDED P.C. BOARD LAYOUT
SCALE 3:1

THIS DRAWING IS A CONTROLLED DOCUMENT.		DNW C.C.THOMAS 12-1-04	TE Connectivity																			
DIMENSIONS: INCHES		CHK S.GLATFELTER 12-1-04	NAME RCPT ASSY, SIZE 2, ARINC 600 (150/36F36/13C2)																			
TOLERANCES UNLESS OTHERWISE SPECIFIED:		APVD S.GLATFELTER 12-1-04	RESTRICTED TO																			
<table border="1"> <tr><td>0 PLC</td><td>±</td><td>-</td></tr> <tr><td>1 PLC</td><td>±</td><td>-</td></tr> <tr><td>2 PLC</td><td>±</td><td>-</td></tr> <tr><td>3 PLC</td><td>±</td><td>-</td></tr> <tr><td>4 PLC</td><td>±</td><td>-</td></tr> <tr><td>ANGLES</td><td>±</td><td>+</td></tr> </table>		0 PLC	±	-	1 PLC	±	-	2 PLC	±	-	3 PLC	±	-	4 PLC	±	-	ANGLES	±	+	PRODUCT SPEC	SIZE A1	
0 PLC	±	-																				
1 PLC	±	-																				
2 PLC	±	-																				
3 PLC	±	-																				
4 PLC	±	-																				
ANGLES	±	+																				
MATERIAL SEE TABLE	FINISH SEE TABLE	APPLICATION SPEC	WEIGHT -	DRAWING NO 00779																		
CUSTOMER DRAWING		SCALE 3:2	SHEET 3 OF 3	REV P																		