



Chipsmall Limited consists of a professional team with an average of over 10 year of expertise in the distribution of electronic components. Based in Hongkong, we have already established firm and mutual-benefit business relationships with customers from,Europe,America and south Asia,supplying obsolete and hard-to-find components to meet their specific needs.

With the principle of "Quality Parts,Customers Priority,Honest Operation,and Considerate Service",our business mainly focus on the distribution of electronic components. Line cards we deal with include Microchip,ALPS,ROHM,Xilinx,Pulse,ON,Everlight and Freescale. Main products comprise IC,Modules,Potentiometer,IC Socket,Relay,Connector.Our parts cover such applications as commercial,industrial, and automotives areas.

We are looking forward to setting up business relationship with you and hope to provide you with the best service and solution. Let us make a better world for our industry!



Contact us

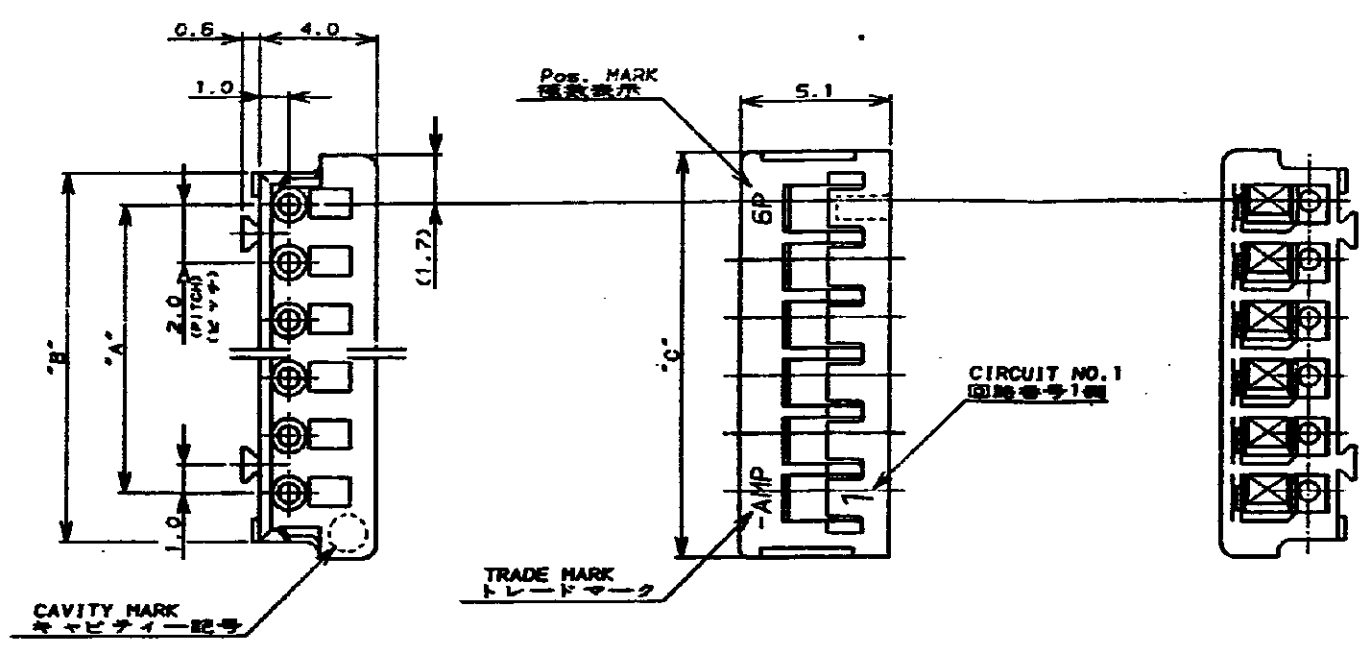
Tel: +86-755-8981 8866 Fax: +86-755-8427 6832

Email & Skype: info@chipsmall.com Web: www.chipsmall.com

Address: A1208, Overseas Decoration Building, #122 Zhenhua RD., Futian, Shenzhen, China

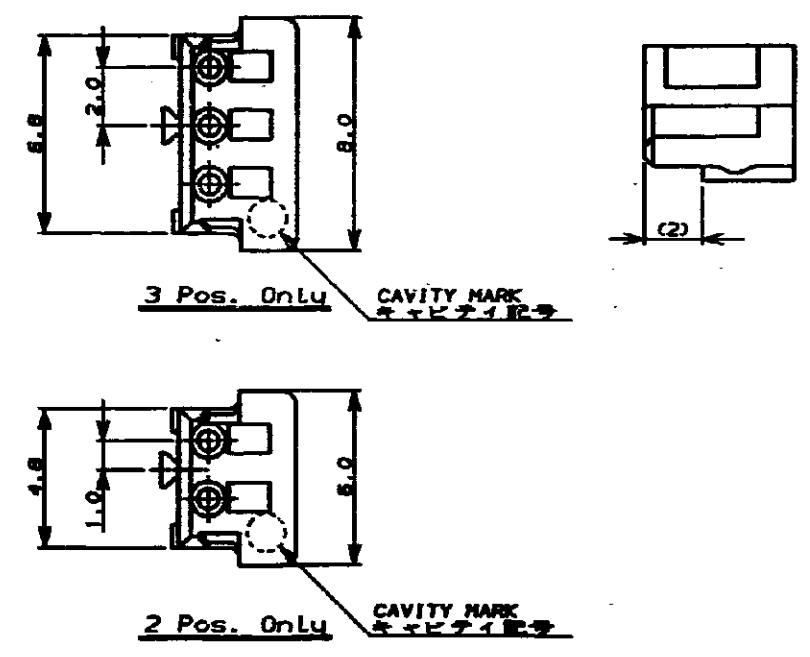


NUMBER C-175778
METRIC
3° ANGLE PROJECTION



- 注:
 1. 材料: 66ナイロン (UL94V-0)
 2. 適用製品規格: 108-5297
 3. 取付適用規格: 114-5140

- NOTES:
 1. MATERIAL: 66 NYLON (UL94V-0)
 2. PRODUCT SPEC.: 108-5297
 3. APPLICATION SPEC.: 114-5140



	7-175778-5	5-175778-5	3-175778-5	1-175778-5	15	28.0	30.8	32.0
	7- 4	5- 4	3- 4	1- 4	14	26.0	28.8	30.0
	7- 3	5- 3	3- 3	1- 3	13	24.0	26.8	28.0
	7- 2	5- 2	3- 2	1- 2	12	22.0	24.8	26.0
	7- 1	5- 1	3- 1	1- 1	11	20.0	22.8	24.0
	7- 0	5- 0	3- 0	1- 0	10	18.0	20.8	22.0
	6- 9	4- 9	2- 9		9	16.0	18.8	20.0
	6- 8	4- 8	2- 8		8	14.0	16.8	18.0
	6- 7	4- 7	2- 7		7	12.0	14.8	16.0
	6- 6	4- 6	2- 6		6	10.0	12.8	14.0
	6- 5	4- 5	2- 5		5	8.0	10.8	12.0
	6- 4	4- 4	2- 4		4	6.0	8.8	10.0
	6- 3	4- 3	2- 3		3	4.0	6.8	8.0
	6-175778-2	4-175778-2	2-175778-2	175778-2	2	2.0	4.8	6.0
	BLACK	YELLOW	BLUE	NATURAL	Pos.	A	B	C

STE TE Connectivity

NAME 圧着タイプ リセハウジング
 CRIMP TYPE RECEPTACLE HOUSING
 (AMP CT CONNECTOR 2mm PITCH)

WIRE RANGE 0.5~1.5 (AWG -)
 INSULATION DIA 0.5~1.5 mm

MATERIAL NOTE 注
 FINISH

GENERAL TOLERANCE
 0mm 10 : ±0.2
 10mm 30 : ±0.25
 30mm 100 : ±0.3
 ANGLES : ±3°

SIZE LOC NUMBER
 A3 J C-175778

SCALE 5-1 REV. D2 SHEET 1 OF 1

D2	ECO-11-005294	RK	DR.	T. NAKAMURA	4/6 '80 DE.
LTR	REVISION RECORD	DR	CHK	S. KIKUCHI	4/8 '80 APP.

PRIMARY DIMS
 DIMENSIONS IN MILLIMETERS. DO NOT SCALE PRINT

CUSTOMER DRAWING