



Chipsmall Limited consists of a professional team with an average of over 10 year of expertise in the distribution of electronic components. Based in Hongkong, we have already established firm and mutual-benefit business relationships with customers from,Europe,America and south Asia,supplying obsolete and hard-to-find components to meet their specific needs.

With the principle of "Quality Parts,Customers Priority,Honest Operation,and Considerate Service",our business mainly focus on the distribution of electronic components. Line cards we deal with include Microchip,ALPS,ROHM,Xilinx,Pulse,ON,Everlight and Freescale. Main products comprise IC,Modules,Potentiometer,IC Socket,Relay,Connector.Our parts cover such applications as commercial,industrial, and automotives areas.

We are looking forward to setting up business relationship with you and hope to provide you with the best service and solution. Let us make a better world for our industry!



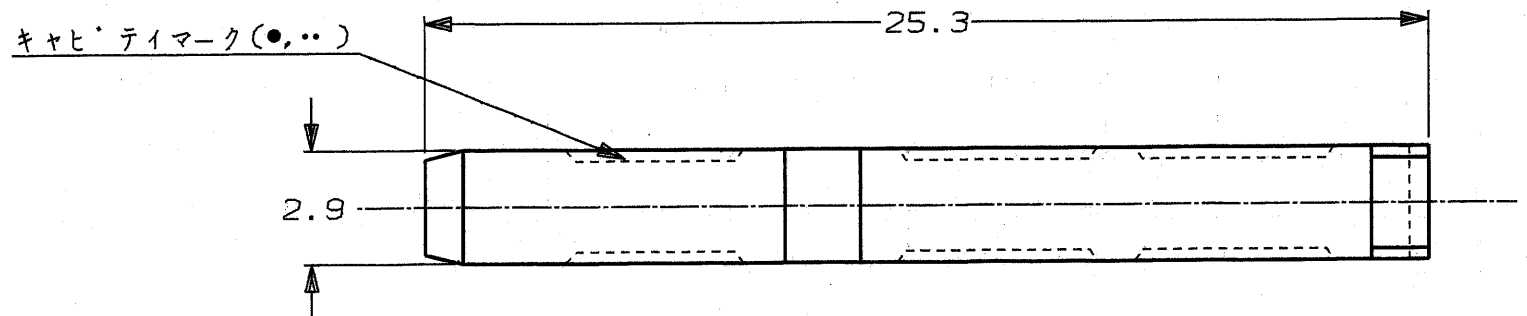
Contact us

Tel: +86-755-8981 8866 Fax: +86-755-8427 6832

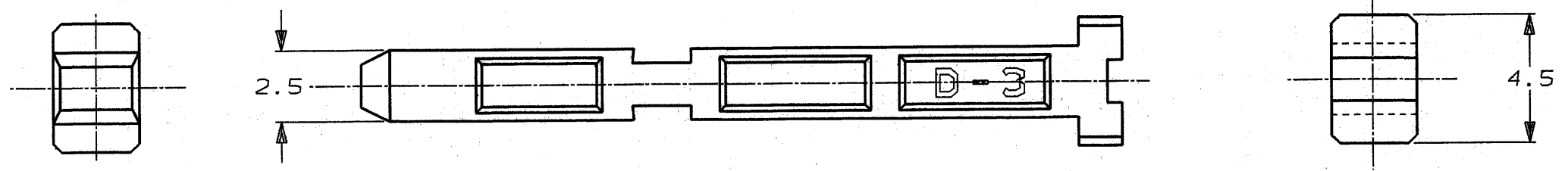
Email & Skype: info@chipsmall.com Web: www.chipsmall.com

Address: A1208, Overseas Decoration Building, #122 Zhenhua RD., Futian, Shenzhen, China





-1: AS SHOWN
本 ☒



NOTE;
 ▲ MATERIAL; GLASS FIELD THERMO PLASTIC, POLYESTER (COLOR: BLACK)
 2 TOLERANCE REFER TO GENERAL TOLERANCE

注記：
 ▲ 材料：ガラス入り熱可塑性ポリエステル樹脂（色は黒）
 2 公差は一般公差を適用する。

NUMBER C-175855
 METRIC
 三角法 (3rd ANGLE PROJECTION)

PRINT DIST
 単位: 概 DIMENSIONS IN MM. DO NOT SCALE PRINT

Copyright ©1991年 日本エー・エム・ピー株式会社				Copyright ©1991 AMP (Japan), LTD. ALL RIGHTS RESERVED.				日本エー・エム・ピー株式会社 Tokyo, Japan			
包含電線断面積 (WIRE RANGE)				被覆外径 (INSULATION DIA.)				名称 (NAME)			
— mm ² (AWG —)				— mmφ				DYNAMIC D-3000 SERIES KEYING PLUG FOR REC.HSG			
材料 (MATERIAL)				仕上 (FINISH)				一般公差 (GENERAL TOLERANCE)			
▲				—				10以下: ±0.2 10を超え 30以下: ±0.25 30を超え 100以下: ±0.3 角 度: ±3°			
A REVISE (J-0145) Y.T S.M 11/11/91				DR. 26/9/91 Y. TANAKA				LOC B J		番号 (No.) C-175855	
O RELEASED (J-0145) Y.T S.M 26/9/91				CHK. 26/9/91 S. MANABE				APP. 26/9/91 S. MANABE		REV. A	
LTR 変更 (REVISION RECORD)				DR				DATE			
								尺 度 (SCALE) 5/1		SHEET 1 OF 1	