



Chipsmall Limited consists of a professional team with an average of over 10 year of expertise in the distribution of electronic components. Based in Hongkong, we have already established firm and mutual-benefit business relationships with customers from,Europe,America and south Asia,supplying obsolete and hard-to-find components to meet their specific needs.

With the principle of “Quality Parts,Customers Priority,Honest Operation,and Considerate Service”,our business mainly focus on the distribution of electronic components. Line cards we deal with include Microchip,ALPS,ROHM,Xilinx,Pulse,ON,Everlight and Freescale. Main products comprise IC,Modules,Potentiometer,IC Socket,Relay,Connector.Our parts cover such applications as commercial,industrial, and automotives areas.

We are looking forward to setting up business relationship with you and hope to provide you with the best service and solution. Let us make a better world for our industry!



Contact us

Tel: +86-755-8981 8866 Fax: +86-755-8427 6832

Email & Skype: info@chipsmall.com Web: www.chipsmall.com

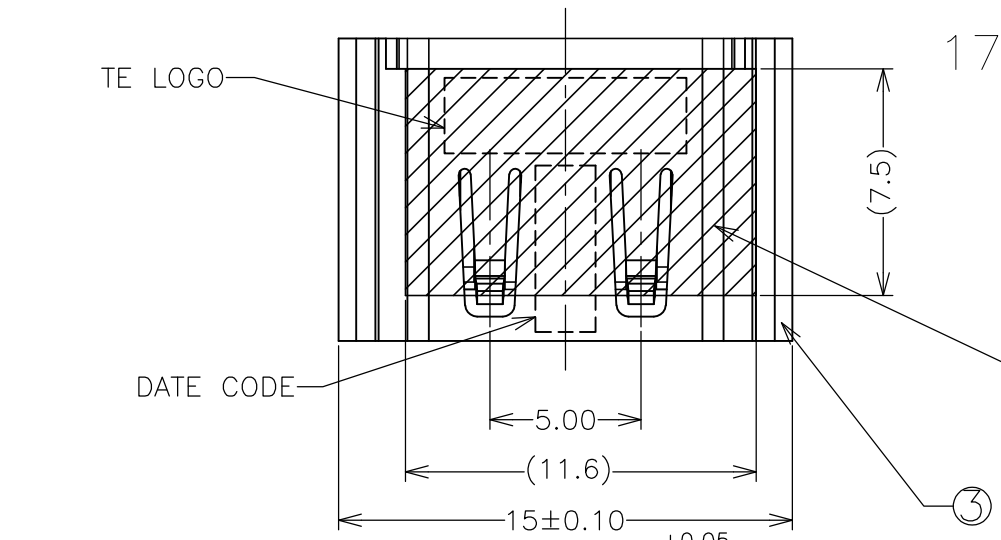
Address: A1208, Overseas Decoration Building, #122 Zhenhua RD., Futian, Shenzhen, China



THIS DRAWING IS UNPUBLISHED. RELEASED FOR PUBLICATION
 © COPYRIGHT 2012 By TE Connectivity. ALL RIGHTS RESERVED.

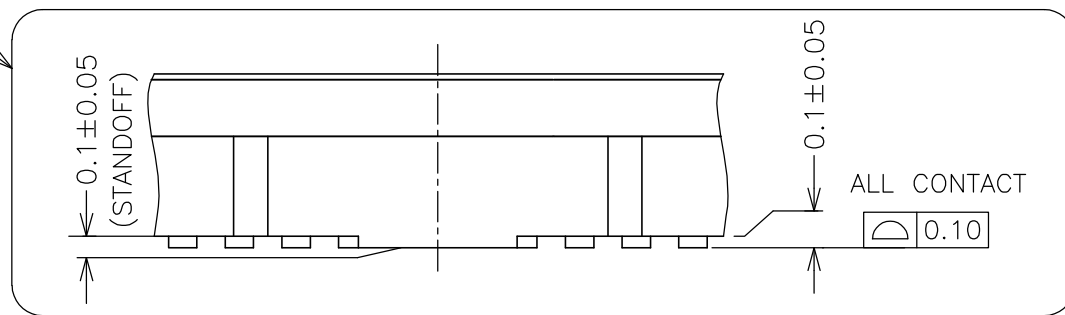
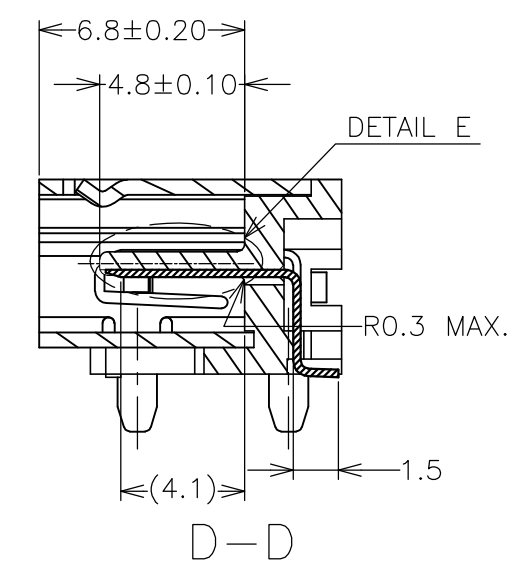
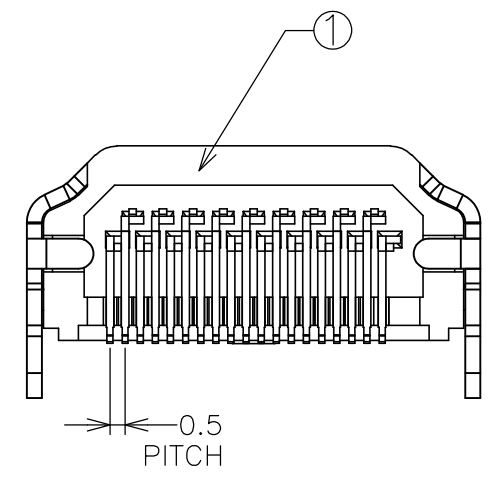
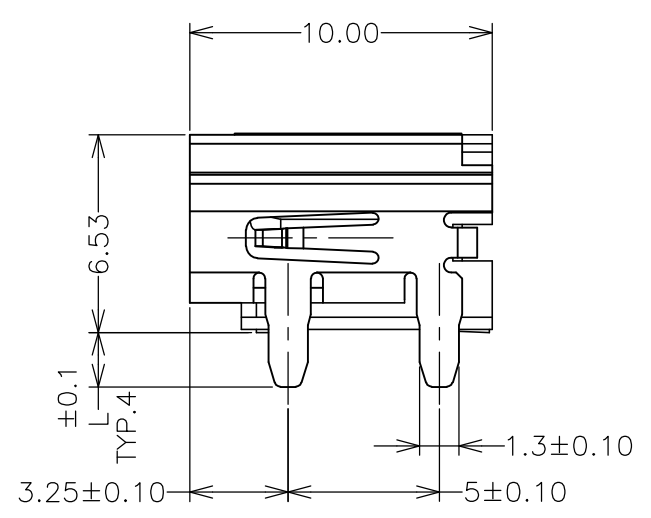
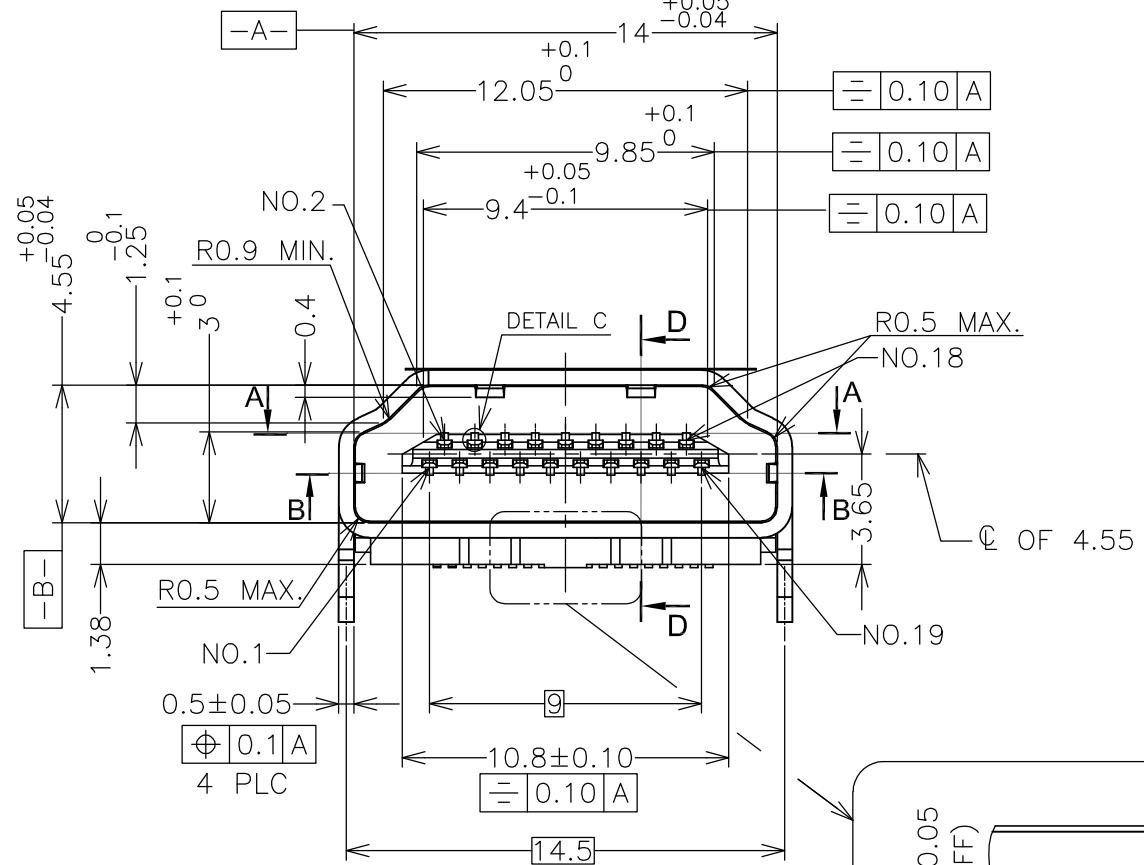
LOC		DIST		REVISIONS			
P	LTR	DESCRIPTION		DATE	DWN	APVD	
	D2	ECR-15-013854		23DEC2015	B.L	H.W	

1759548-1~-5: AS SHOWN

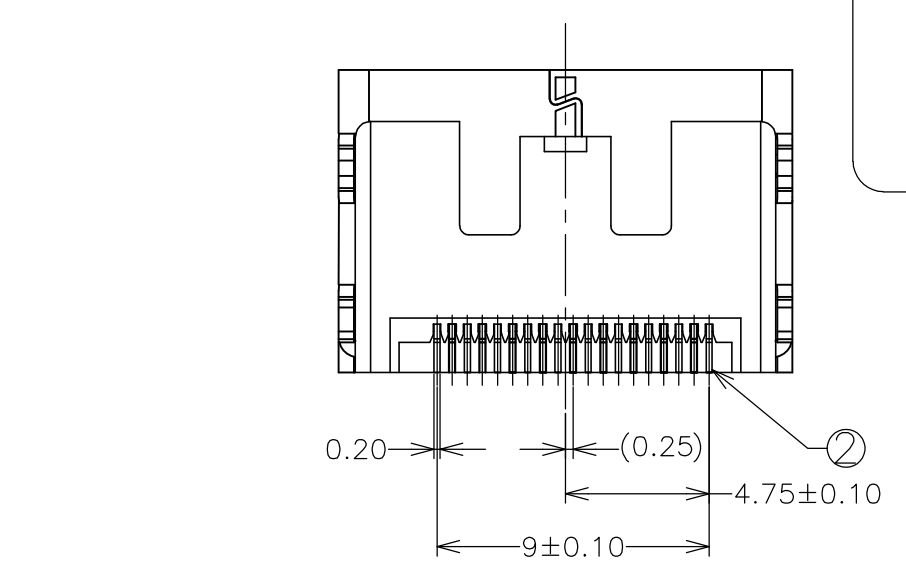


MYLAR ONLY FOR
 1759548-1,
 1759548-3,
 1759548-4,
 1759548-5.

- ① MATERIAL:
 - ① HOUSING: HIGH TEMP. THERMOPLASTIC, UL 94V-0, BLACK COLOR.
 - ② CONTACT: PHOSPHOR BRONZE.
 - ③ SHELL: PHOSPHOR BRONZE.
 - ④ MYLAR: PI.
- ② CONTACT FINISH:
 - GOLD PLATING ON CONTACT AREA (THICKNESS SEE TABLE)
 - 2.54µm [100µ"] MIN TIN PLATED ON SOLDER TAILS
 - 1.27µm [50µ"] MIN NICKEL UNDER PLATED OVER ALL.
- ③ SHELL FINISH:
 - 1.27µm [50µ"] MIN. NICKEL PLATE ALL OVER WITH SELECTIVELY PLATED GOLD FLASH ON THE SOLDERABLE AREAS OF THE HOLD-DOWN LEGS.
- ④ SHELL FINISH:
 - 1.27µm [50µ"] MIN. NICKEL PLATE ALL OVER WITH SELECTIVELY PLATED GOLD FLASH ON THE SOLDERABLE AREAS OF THE HOLD-DOWN LEGS AND BLACK COLOR OF SPUTTERING PLATE IN FRONT SURFACE.



OBSOLETE	W/	1.0	③	GOLD FLASH	1759548-5
OBSOLETE	W/	1.8	④	0.762µm MIN.	1759548-4
OBSOLETE	W/	1.8	③	0.762µm MIN.	1759548-3
ACTIVE	W/O	1.8	③	0.38µm MIN.	1759548-2
OBSOLETE	W/	1.8	③	GOLD FLASH	1759548-1
TOOLING	MYLAR	L	SHELL PLATING	△ GOLD PLATING ON CONTACT AREA	PART NUMBER



THIS DRAWING IS A CONTROLLED DOCUMENT.

DIMENSIONS:	TOLERANCES UNLESS OTHERWISE SPECIFIED:	DWN	18JAN08	TE Connectivity NAME HDMI TYPE A RECEPTACLE BOTTOM MOUNT CONNECTOR			
mm		CHK	18JAN08				
		APVD	18JAN08				
		PRODUCT SPEC					
		APPLICATION SPEC		SIZE	CAGE CODE	DRAWING NO	RESTRICTED TO
				108-57510	A300779	C-1759548	
MATERIAL	FINISH	WEIGHT		CUSTOMER DRAWING	SCALE	SHEET	REV
①	②	1.85 gm			4:1	1 OF 3	D2

THIS DRAWING IS UNPUBLISHED.

RELEASED FOR PUBLICATION

© COPYRIGHT 2012 By TE Connectivity.

ALL RIGHTS RESERVED.

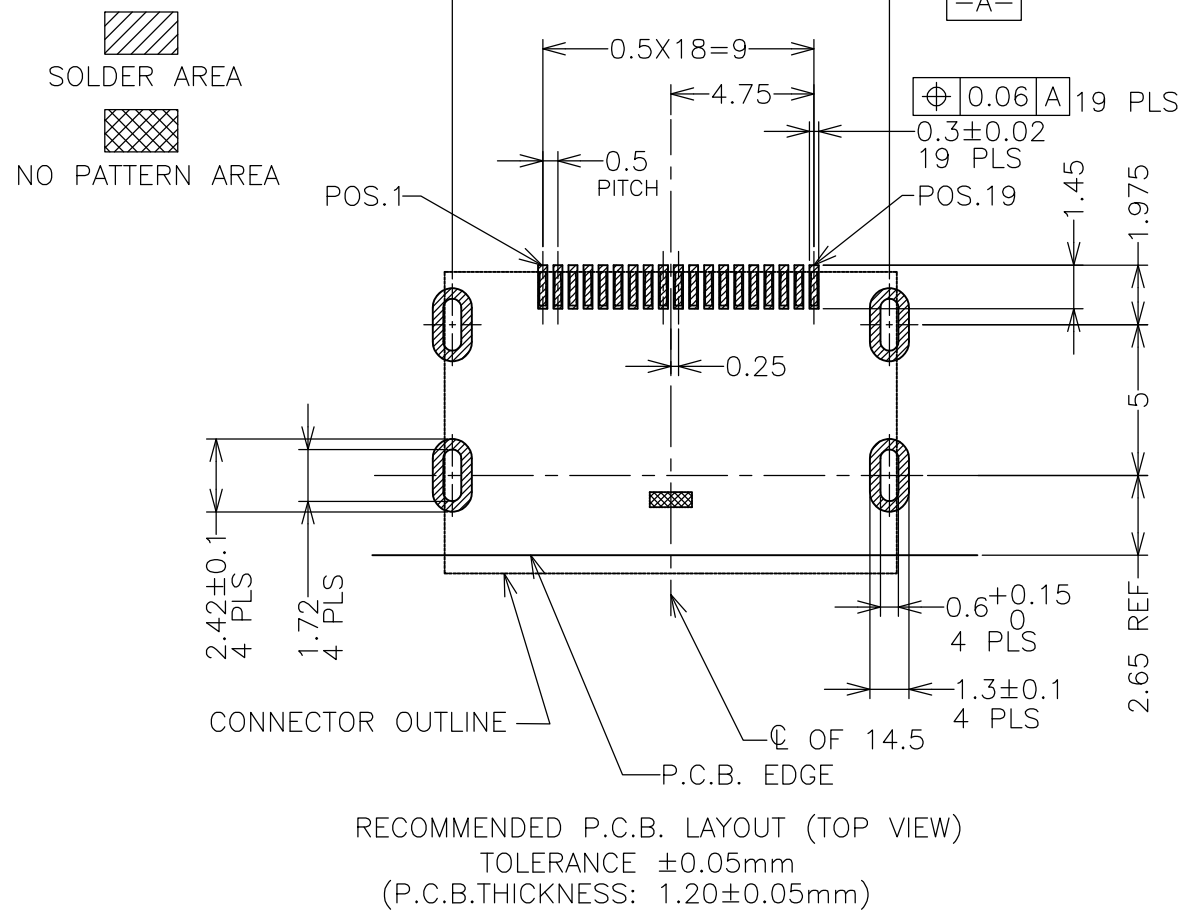
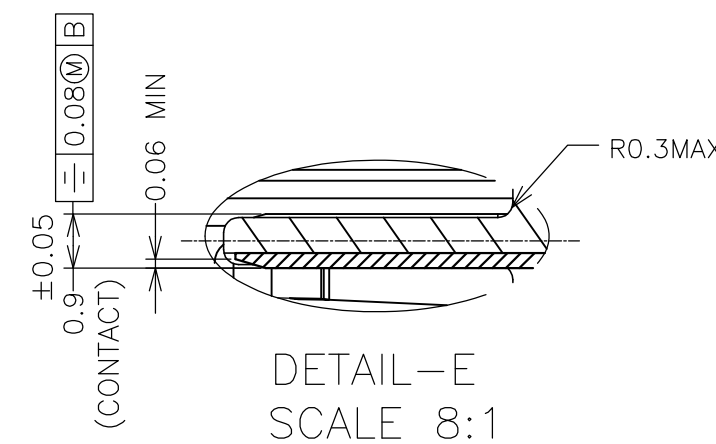
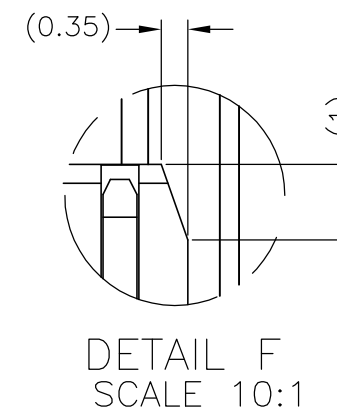
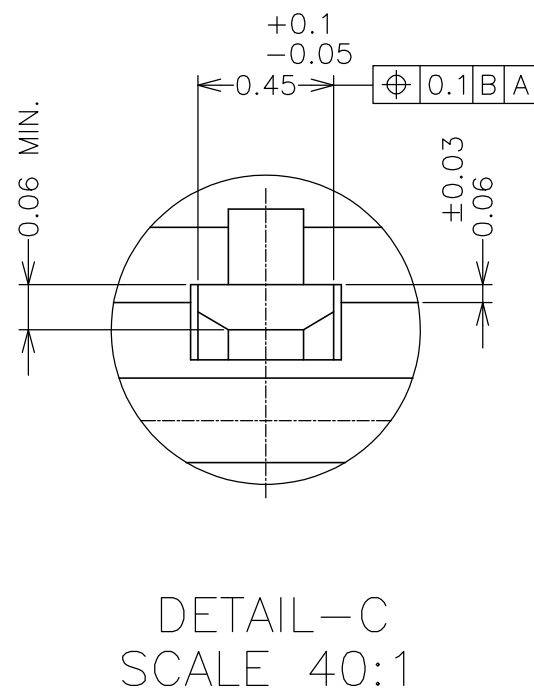
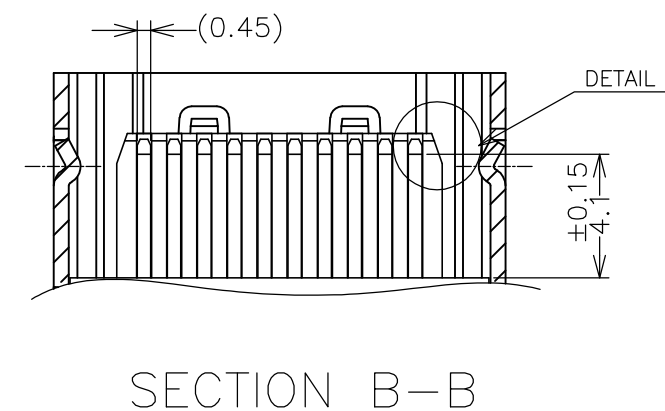
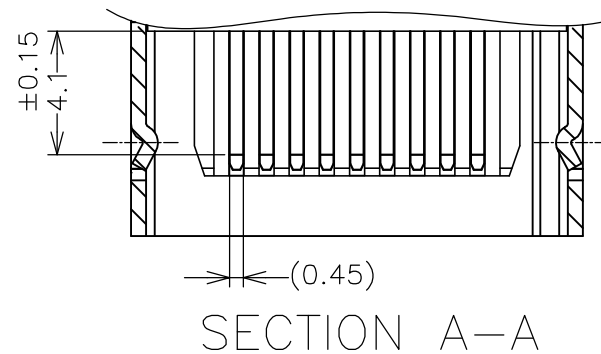
LOC DW

DIST

REVISIONS

P	LTR	DESCRIPTION	DATE	DWN	APVD
-	-	SEE SHEET 1	-	-	-

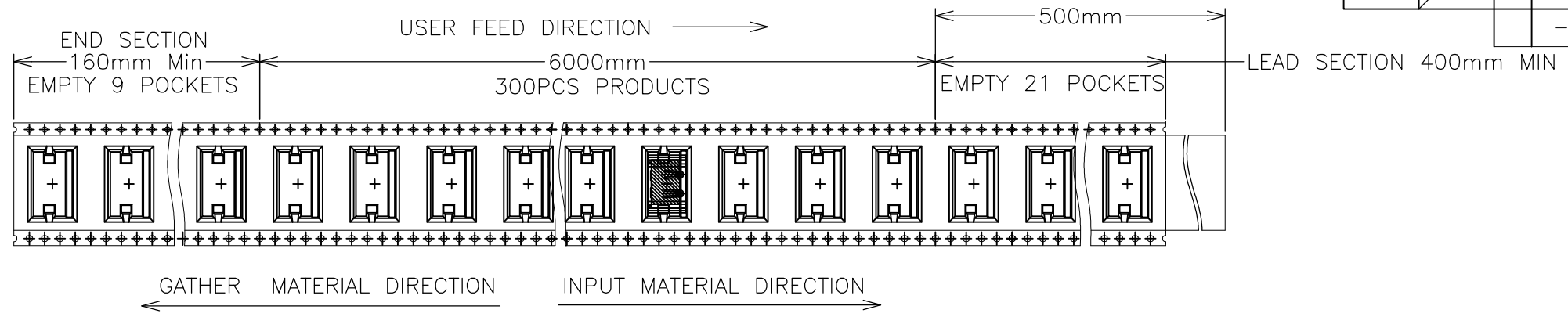
19	HOT PLUG DETECT	18	+5V POWER
17	DDC/CEC GROUND	16	SDA
15	SCL	14	RESERVED (N.C. ON DEVICE)
13	CEC	12	TMDS CLOCK-
11	TMDS CLOCK SHIELD	10	TMDS CLOCK+
9	TMDS DATA0-	8	TMDS DATA0 SHIELD
7	TMDS DATA0+	6	TMDS DATA1-
5	TMDS DATA1 SHIELD	4	TMDS DATA1+
3	TMDS DATA2-	2	TMDS DATA2 SHIELD
1	TMDS DATA2+		
PIN	SIGNAL ASSIGNMENT	PIN	SIGNAL ASSIGNMENT



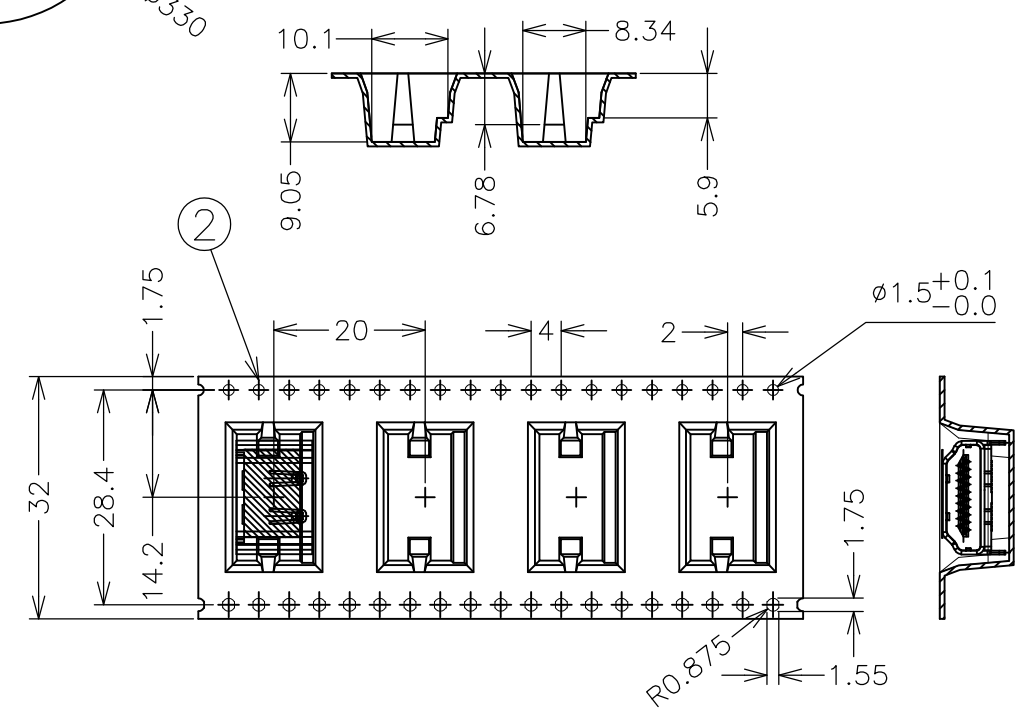
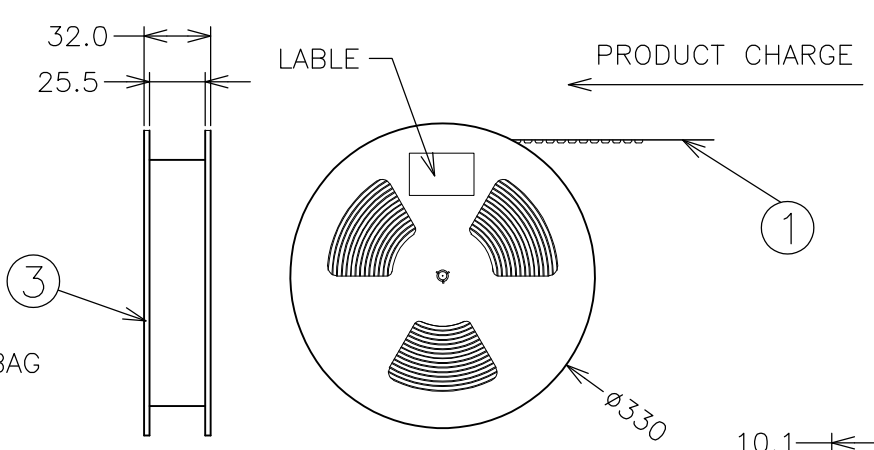
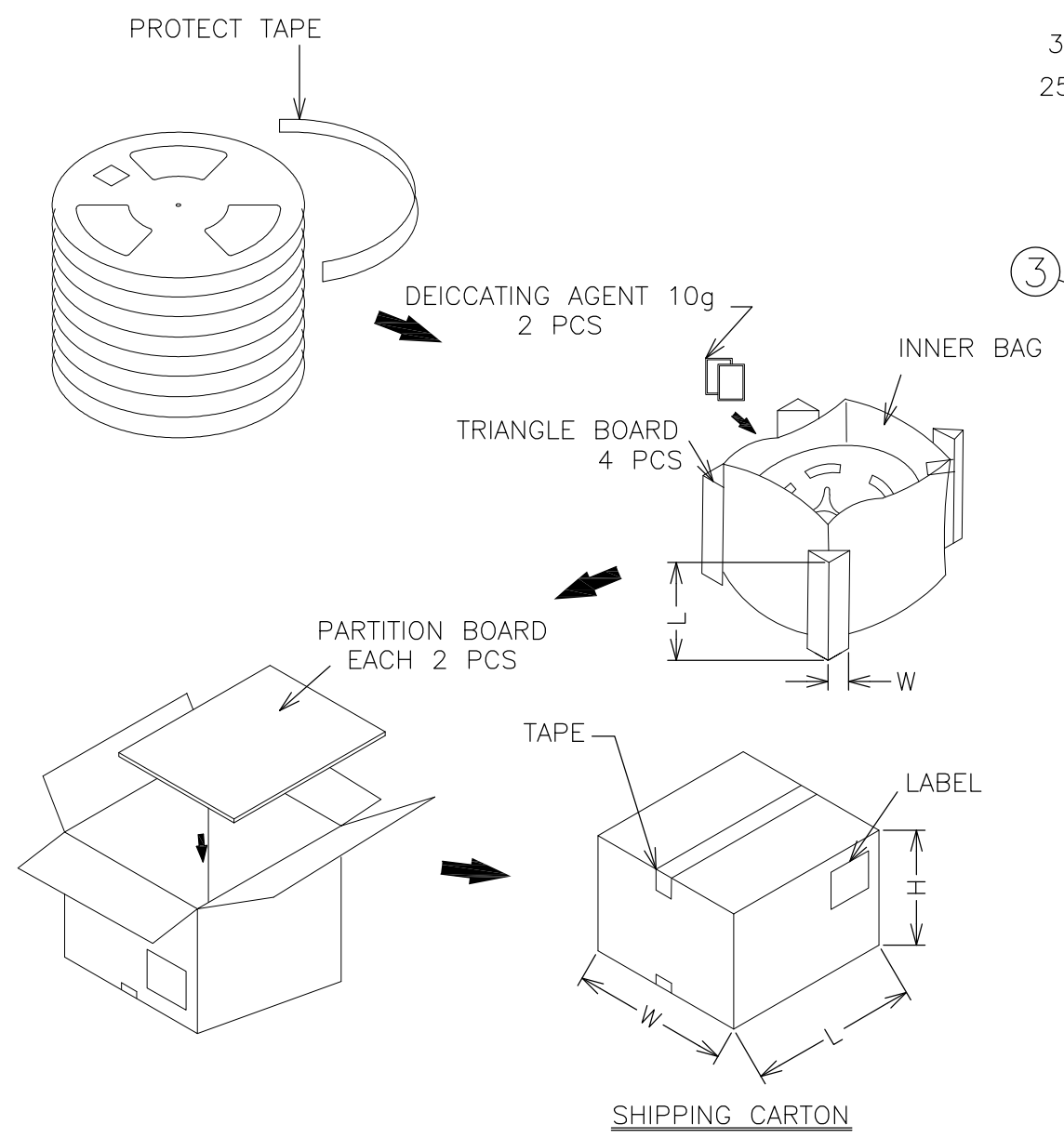
THIS DRAWING IS A CONTROLLED DOCUMENT.		DWN			
DIMENSIONS: mm		CHK			
TOLERANCES UNLESS OTHERWISE SPECIFIED:		APVD			
8 PLC ± 1 PLC ±- 2 PLC ±- 3 PLC ±- 4 PLC ±- ANGLES ±-		PRODUCT SPEC			
MATERIAL		FINISH		NAME	
				HDMI TYPE A RECEPTACLE BOTTOM MOUNT CONNECTOR	
				SIZE	RESTRICTED TO
				A3	
				CAGE CODE	
				00779	
				DRAWING NO	
				C-1759548	
				SCALE	REV
				4:1	D2
				SHEET	
				2 of 3	
				CUSTOMER DRAWING	

THIS DRAWING IS UNPUBLISHED. RELEASED FOR PUBLICATION
 © COPYRIGHT 2012 By TE Connectivity. ALL RIGHTS RESERVED.

LOC DW	DIST /	P	LTR	DESCRIPTION	DATE	DWN	APVD
				SEE SHEET 1	-	-	-



- NOTE:
1. PEELING SPEED: 300mm/MINUTE
 2. PEELING RESISTANCE: 20g~130g
 3. PEELING ANGLE: 165°~180°
 4. DIMENSION:
 - CARTON: L=345, W=345, H=335
 - PARTITION BOARD: 330*330*3.5
 - TRIANGLE PARTITION: L=290, W=330
 5. QUANTITY:
 - 300 PCS/REEL
 - 8 PCS REELS/SHIPPING CARTON
 - 2400 PCS/SHIPPING CARTON
 6. NW:4.4KG; GW:8.9KG
 7. MATERIAL:
 - ① COVER TAPE: PET
 - ② CARRIER TAPE: CONDUCTIVE POLYSTYRENE ALLOY
 - ③ REEL: PS
 8. TEMPERATURE RANGE:
 - ① COVER TAPE: >=100° (MELTING TEMPERATURE)
 - ② CARRIER TAPE: 65° (DISTORTION TEMPERATURE)
 - ③ REEL: 85° (DISTORTION TEMPERATURE)



THIS DRAWING IS A CONTROLLED DOCUMENT.		DWN	04OCT2006		TE Connectivity			
DIMENSIONS: mm		CHK	-					NAME
TOLERANCES UNLESS OTHERWISE SPECIFIED:		APVD	-		HDMI TYPE A RECEPTACLE BOTTOM MOUNT CONNECTOR			
6 PLC ±		PRODUCT SPEC	-		-			
1 PLC ± ±0.5		APPLICATION SPEC	-		SIZE	CAGE CODE	DRAWING NO	RESTRICTED TO
2 PLC ± ±3°		WEIGHT	-		A3	00779	C-1759548	-
3 PLC ± ±		CUSTOMER DRAWING		SCALE	NAN	SHEET	3 OF 3	REV
4 PLC ± ±								D2
FINISH ± ±								