



Chipsmall Limited consists of a professional team with an average of over 10 year of expertise in the distribution of electronic components. Based in Hongkong, we have already established firm and mutual-benefit business relationships with customers from,Europe,America and south Asia,supplying obsolete and hard-to-find components to meet their specific needs.

With the principle of “Quality Parts,Customers Priority,Honest Operation,and Considerate Service”,our business mainly focus on the distribution of electronic components. Line cards we deal with include Microchip,ALPS,ROHM,Xilinx,Pulse,ON,Everlight and Freescale. Main products comprise IC,Modules,Potentiometer,IC Socket,Relay,Connector.Our parts cover such applications as commercial,industrial, and automotives areas.

We are looking forward to setting up business relationship with you and hope to provide you with the best service and solution. Let us make a better world for our industry!



Contact us

Tel: +86-755-8981 8866 Fax: +86-755-8427 6832

Email & Skype: info@chipsmall.com Web: www.chipsmall.com

Address: A1208, Overseas Decoration Building, #122 Zhenhua RD., Futian, Shenzhen, China



4

3

2

1

THIS DRAWING IS UNPUBLISHED.

RELEASED FOR PUBLICATION

AUG ,2006.

© COPYRIGHT BY TYCO ELECTRONICS CORPORATION. ALL RIGHTS RESERVED.

LOC DW

DIST

REVISIONS

P	LTR	DESCRIPTION	DATE	DWN	APVD
E		REVISED (ECR-13-011759)	06NOV2013	BW	WK

NOTES:

1. MATERIAL:

HOUSING: HIGH TEMP THERMOPLASTIC(LCP), UL94V-0, BLACK COLOR.
 CONTACT: PHOSPHOR BRONZE.
 CAP: HIGH TEMP THERMOPLASTIC(LCP), UL94V-0, BLACK COLOR.
 NUT: STAINLESS STEEL.

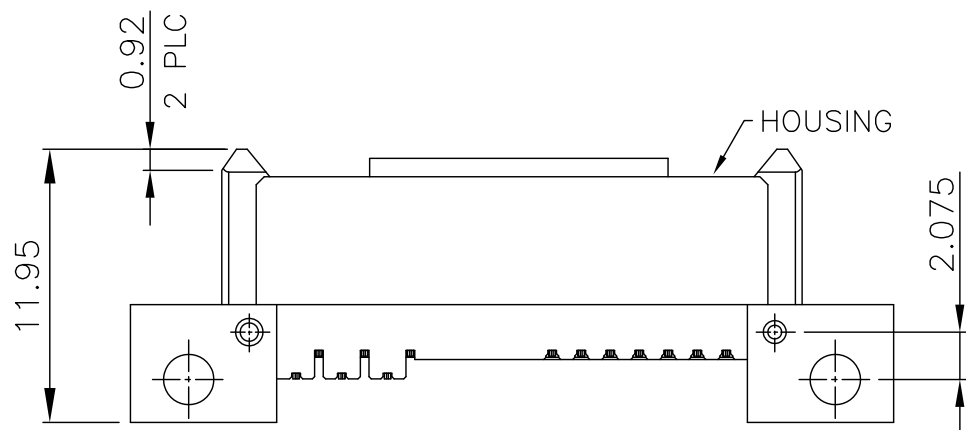
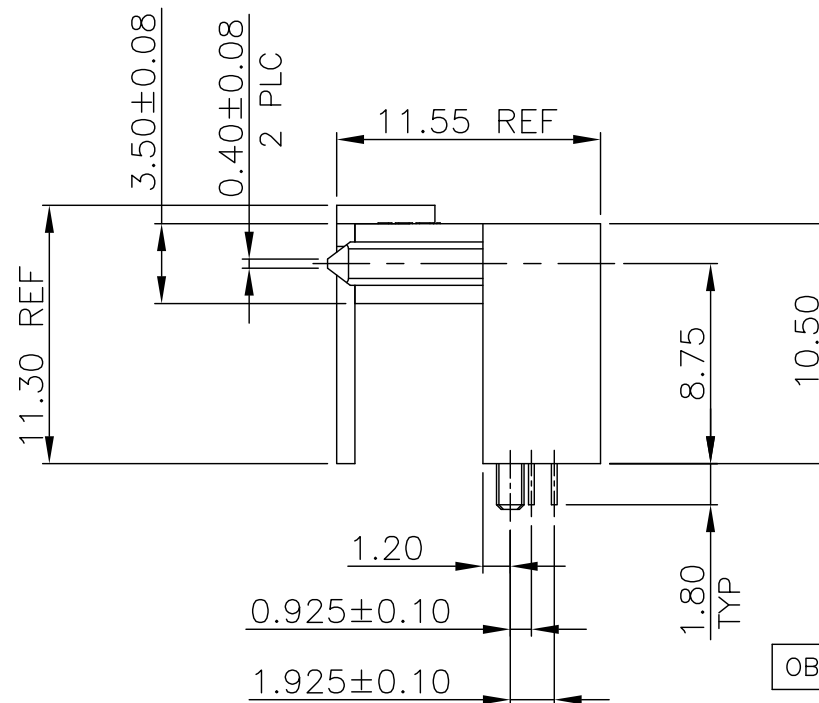
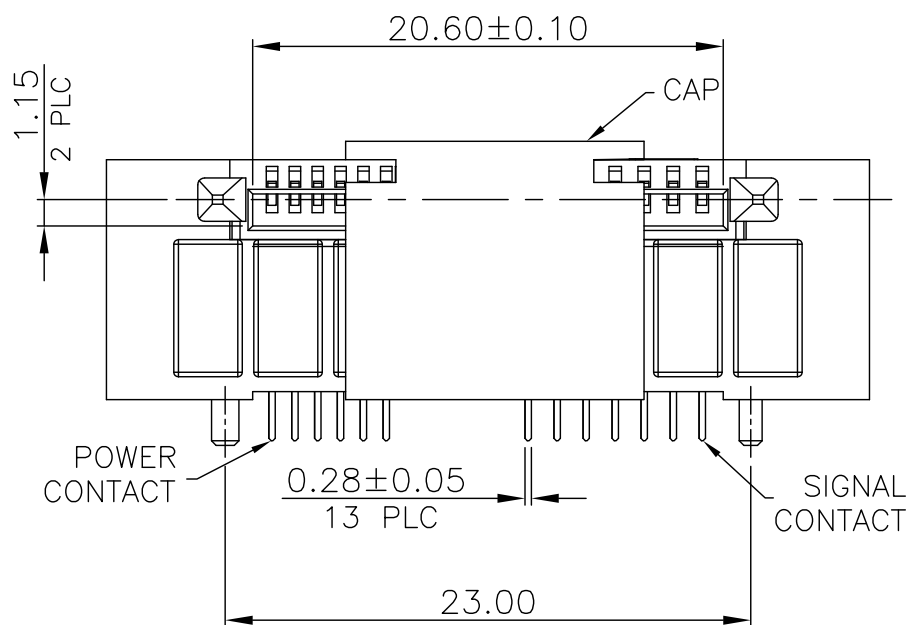
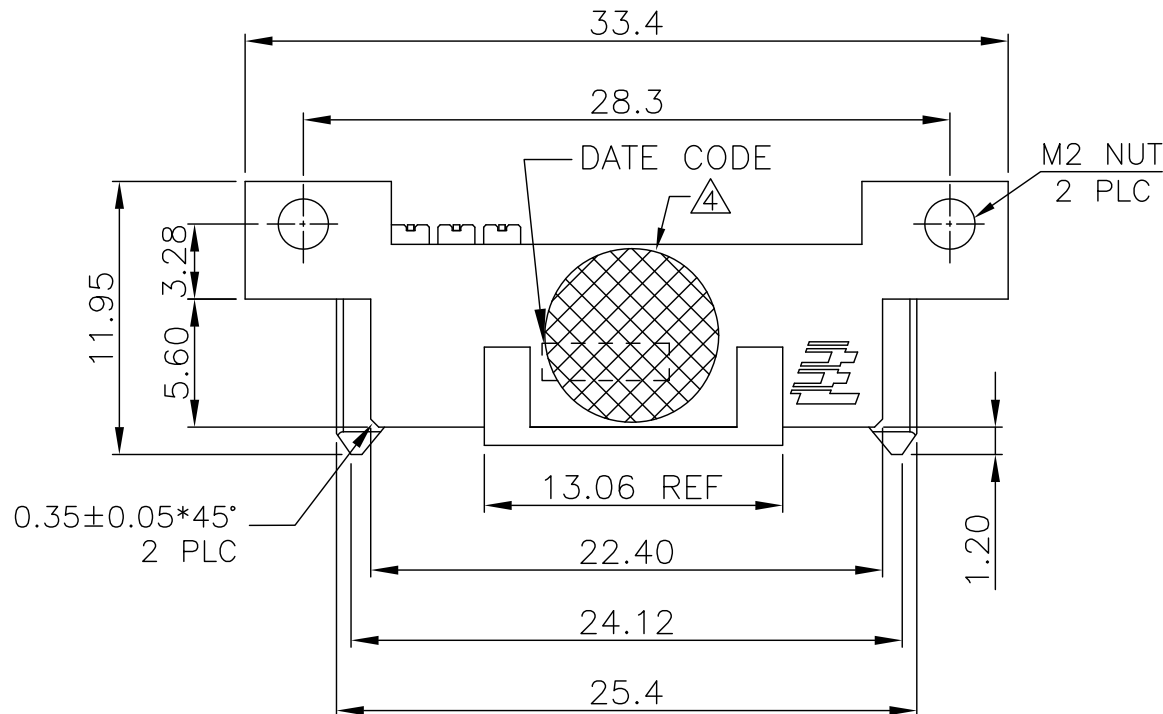
2. FINISH:

GOLD PLATED ON CONTACT AREA: (SEE TABLE)
 2.54um[100u"] MIN. MATTE TIN PLATING ON SOLDER TAIL.
 1.27um[50u"] MIN. NICKEL ENTIRE CONTACT UNDERPLATED.

3. REFLOW SOLDER CAPABLE TO 260°C PER TEST SPEC. 109-201, CONDITION B.

4 PICK & PLACE VACUUM AREA.

5 NO CUMULATIVE TOLERANCE.



	W/O CAP WEIGHT	W/CAP WEIGHT	GOLD PLATING MIN.	PART NUMBER
OBSOLETE	2.1 g	2.35 g	0.76um[30u"]	1759981-9
	2.1 g	2.35 g	0.38um[15u"]	1759981-8
OBSOLETE	2.1 g	2.35 g	G/F	1759981-7

THIS DRAWING IS A CONTROLLED DOCUMENT.		DWN J. LAI 08SEP2009	Tyco Electronics Corporation Taipei, Taiwan	
DIMENSIONS: MM		CHK S. CHIEN 08SEP2009		
TOLERANCES UNLESS OTHERWISE SPECIFIED:		APVD W. KODAMA 08SEP2009	NAME	
0 PLC ± - 1 PLC ± 0.3 2 PLC ± 0.2 3 PLC ± 0.15 4 PLC ± - ANGLES ± 3°		PRODUCT SPEC	SLIMLINE SATA RECEPTACLE, BOTTOM MOUNT, DIP, NUT TYPE	
MATERIAL SEE NOTE		FINISH SEE NOTE	QUALIFICATION TEST REPORT	RESTRICTED TO
		WEIGHT SEE TABLE	501-99009	
		CUSTOMER DRAWING	SIZE A3	CAGE CODE 00779
			DRAWING NO C=1759981	SCALE -
			SHEET 1 of 3	REV E

THIS DRAWING IS UNPUBLISHED.

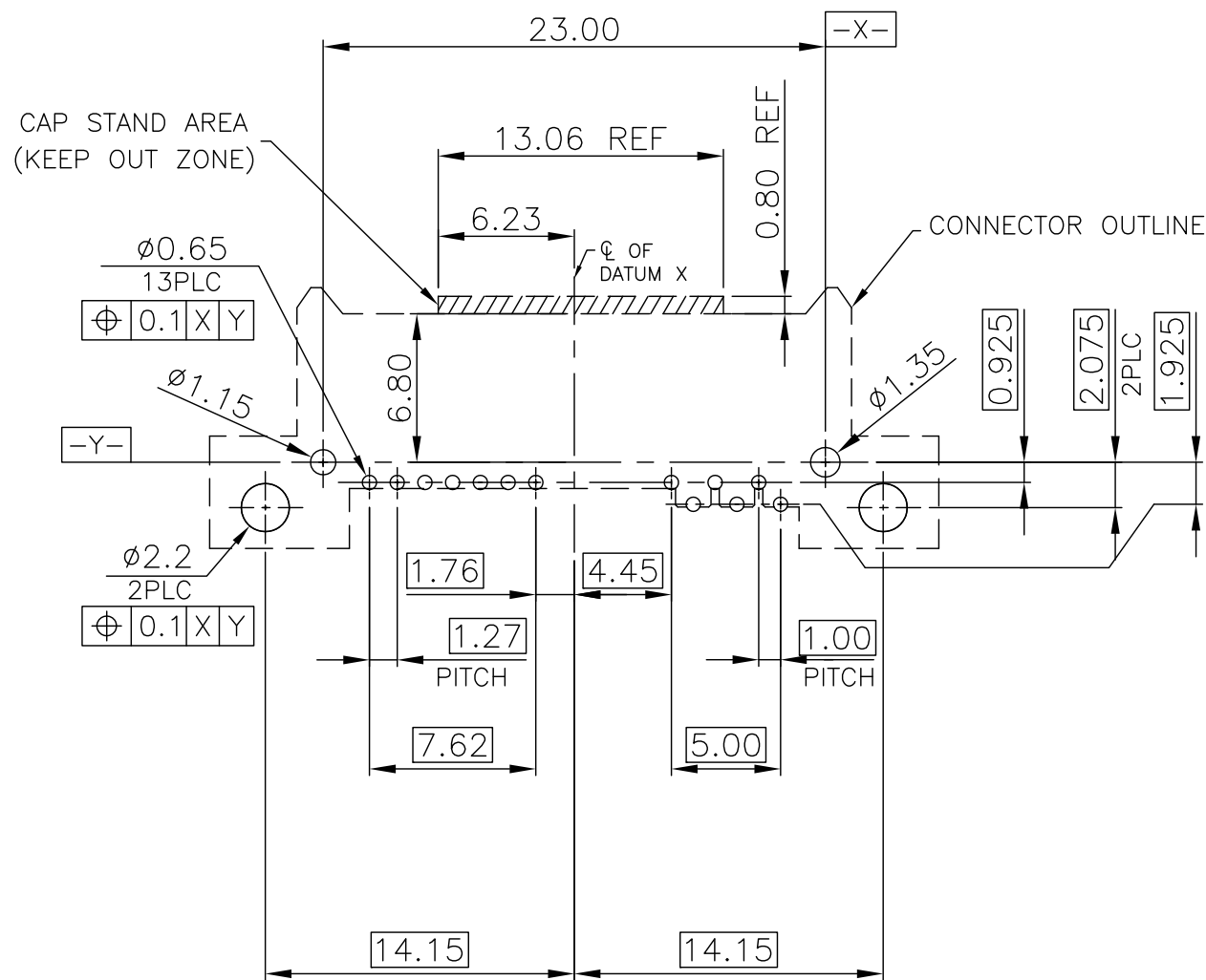
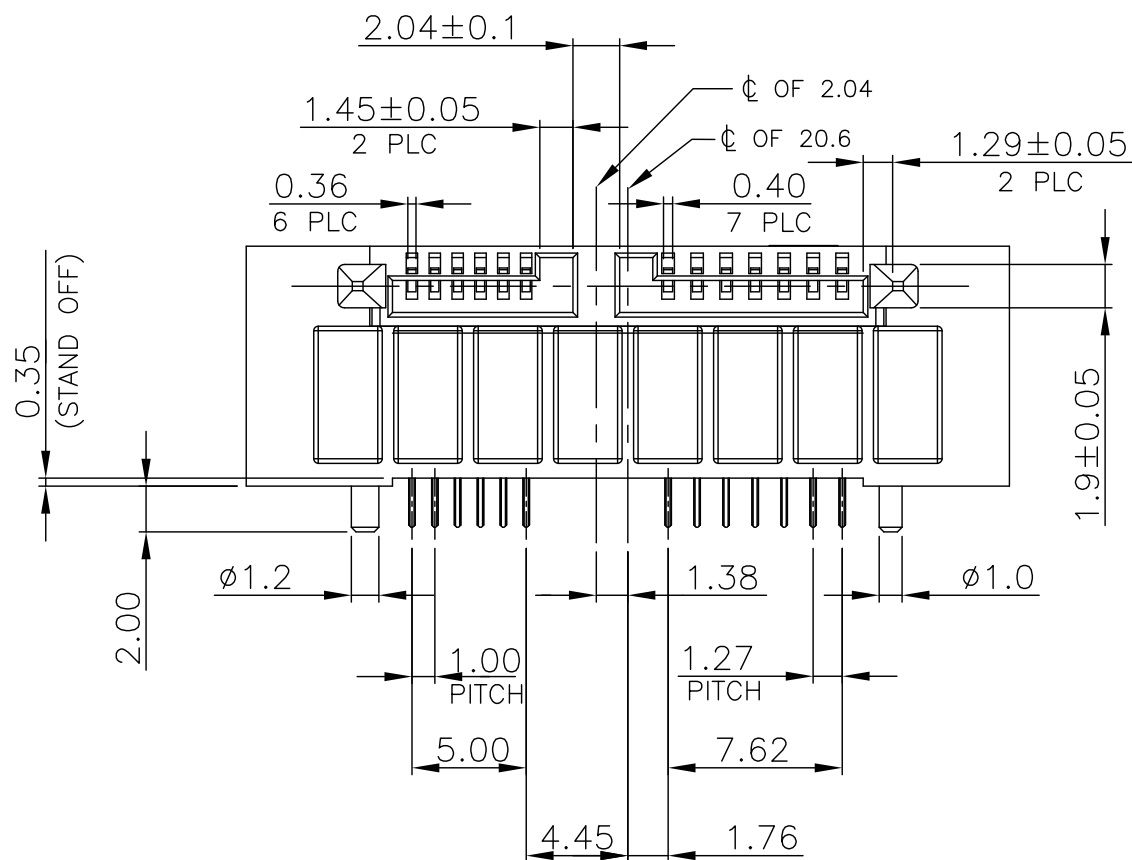
RELEASED FOR PUBLICATION

AUG ,2006.

© COPYRIGHT BY TYCO ELECTRONICS CORPORATION. ALL RIGHTS RESERVED.

LOC	DIST	REVISIONS			
P	LTR	DESCRIPTION	DATE	DWN	APVD
DW		SEE SHEET 1.			

(WITHOUT CAP)



RECOMMENDED PCB LAYOUT
 TOLERANCE: ±0.05mm (COMPONENT VIEW)
 PCB THICKNESS 1.2mm

THIS DRAWING IS A CONTROLLED DOCUMENT.		DWN	Tyco Electronics Corporation Taipei, Taiwan	
DIMENSIONS: MM		CHK	NAME	
TOLERANCES UNLESS OTHERWISE SPECIFIED:		APVD	SLIMLINE SATA RECEPTACLE, BOTTOM MOUNT, DIP, NUT TYPE	
0 PLC ± -		PRODUCT SPEC	SIZE	CAGE CODE
1 PLC ± 0.3		APPLICATION SPEC	A3	00779
2 PLC ± 0.2		WEIGHT	DRAWING NO	
3 PLC ± 0.15		CUSTOMER DRAWING	C=1759981	
4 PLC ± -		SCALE	RESTRICTED TO	
ANGLES ± 3'		SHEET	REV	
MATERIAL		2 of 3	E	
FINISH				

THIS DRAWING IS UNPUBLISHED.

RELEASED FOR PUBLICATION

AUG ,2006.

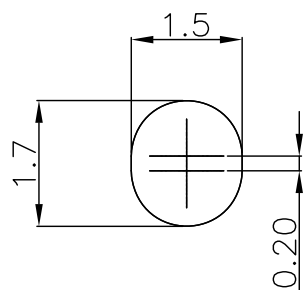
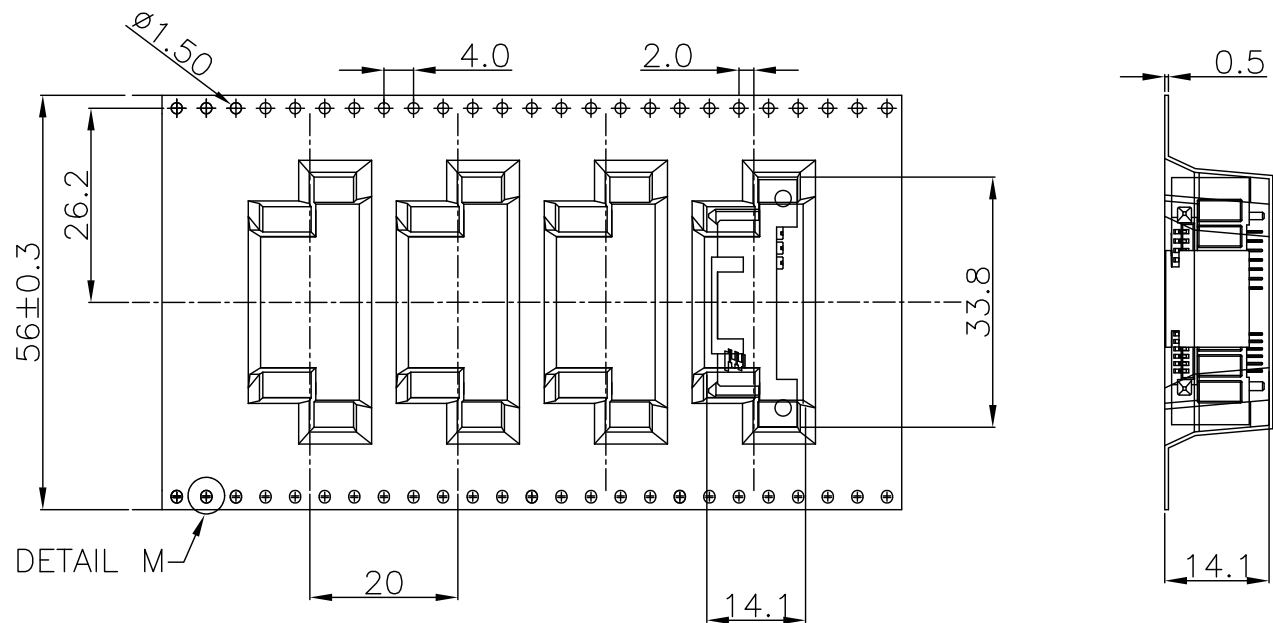
© COPYRIGHT BY TYCO ELECTRONICS CORPORATION. ALL RIGHTS RESERVED.

LOC DW

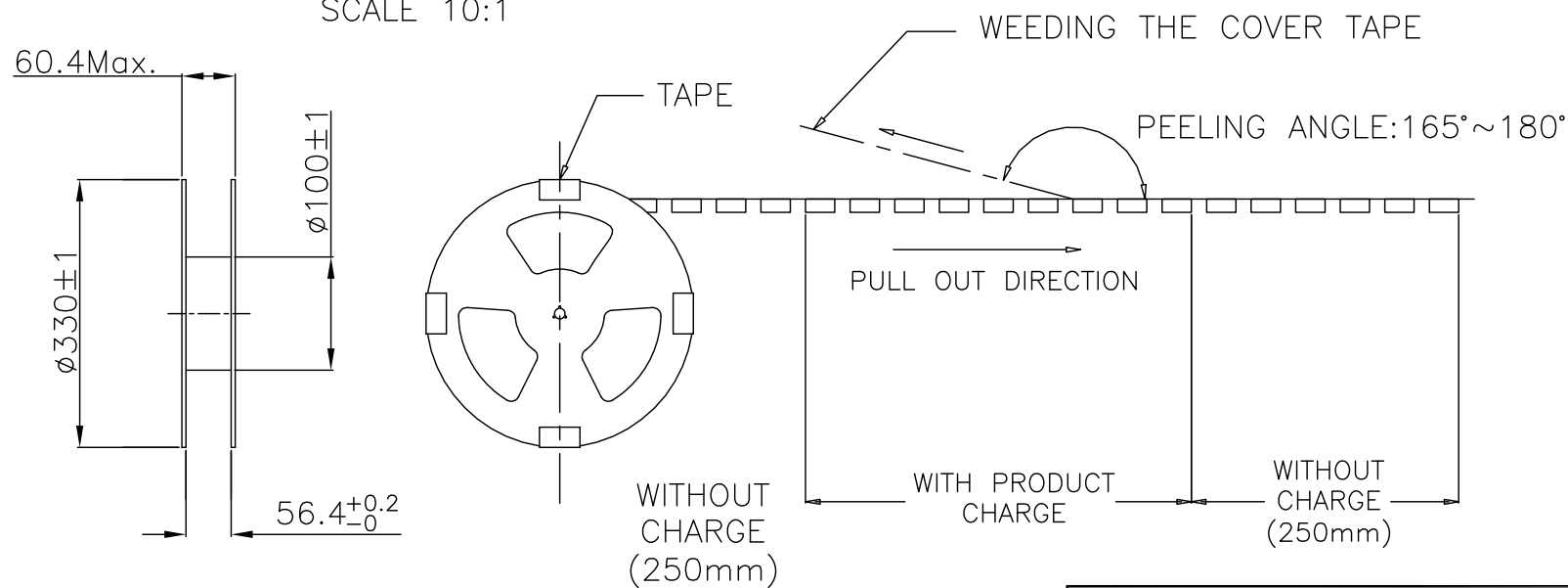
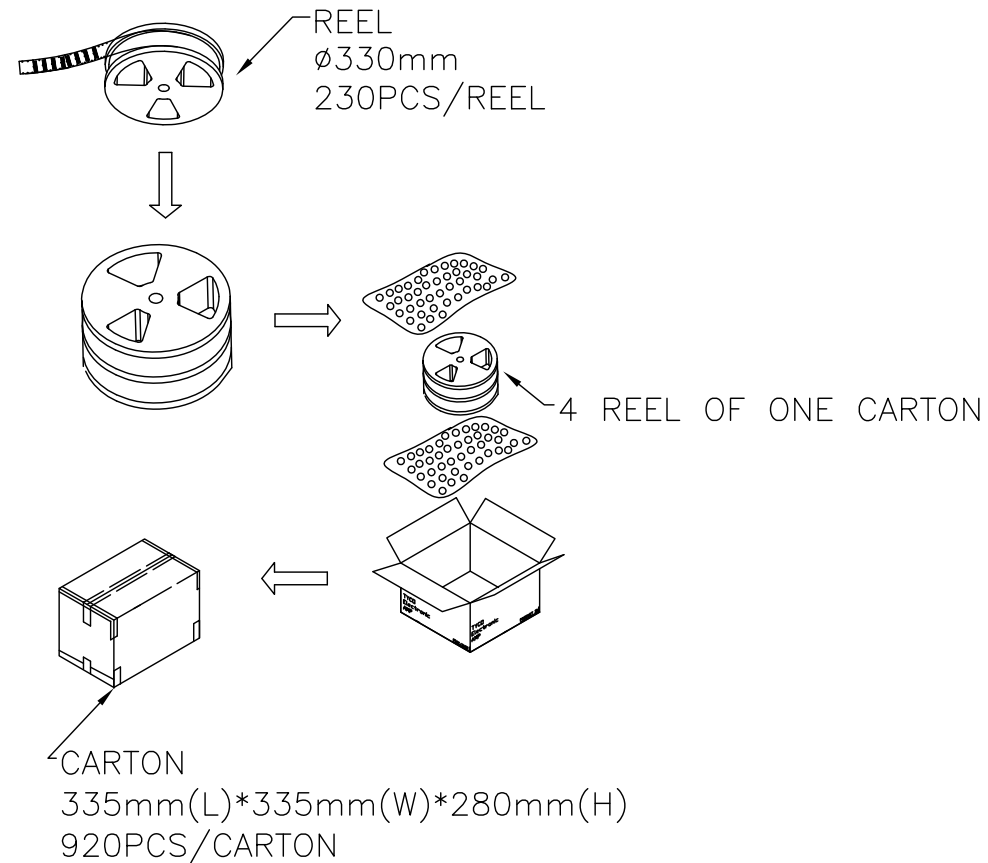
DIST

REVISIONS

P	LTR	DESCRIPTION	DATE	DWN	APVD
		SEE SHEET 1.			



DETAIL M
SCALE 10:1



OBSOLETE	230	920	1759981-9
	230	920	1759981-8
OBSOLETE	230	920	1759981-7
	PCS/REEL	PCS/CARTON	P/N

THIS DRAWING IS A CONTROLLED DOCUMENT.		DWN		Tyco Electronics Corporation Taipei, Taiwan	
DIMENSIONS: MM		CHK			
TOLERANCES UNLESS OTHERWISE SPECIFIED:		APVD		NAME	
0 PLC ± - 1 PLC ± - 2 PLC ± - 3 PLC ± - 4 PLC ± - ANGLES ± -		PRODUCT SPEC		SLIMLINE SATA RECEPTACLE, BOTTOM MOUNT, DIP, NUT TYPE	
MATERIAL		FINISH		APPLICATION SPEC	
		WEIGHT		SIZE CAGE CODE DRAWING NO RESTRICTED TO	
		CUSTOMER DRAWING		A3 00779 C=1759981	
		SCALE		SHEET 3 of 3 REV E	