



Chipsmall Limited consists of a professional team with an average of over 10 year of expertise in the distribution of electronic components. Based in Hongkong, we have already established firm and mutual-benefit business relationships with customers from,Europe,America and south Asia,supplying obsolete and hard-to-find components to meet their specific needs.

With the principle of "Quality Parts,Customers Priority,Honest Operation,and Considerate Service",our business mainly focus on the distribution of electronic components. Line cards we deal with include Microchip,ALPS,ROHM,Xilinx,Pulse,ON,Everlight and Freescale. Main products comprise IC,Modules,Potentiometer,IC Socket,Relay,Connector.Our parts cover such applications as commercial,industrial, and automotives areas.

We are looking forward to setting up business relationship with you and hope to provide you with the best service and solution. Let us make a better world for our industry!



## Contact us

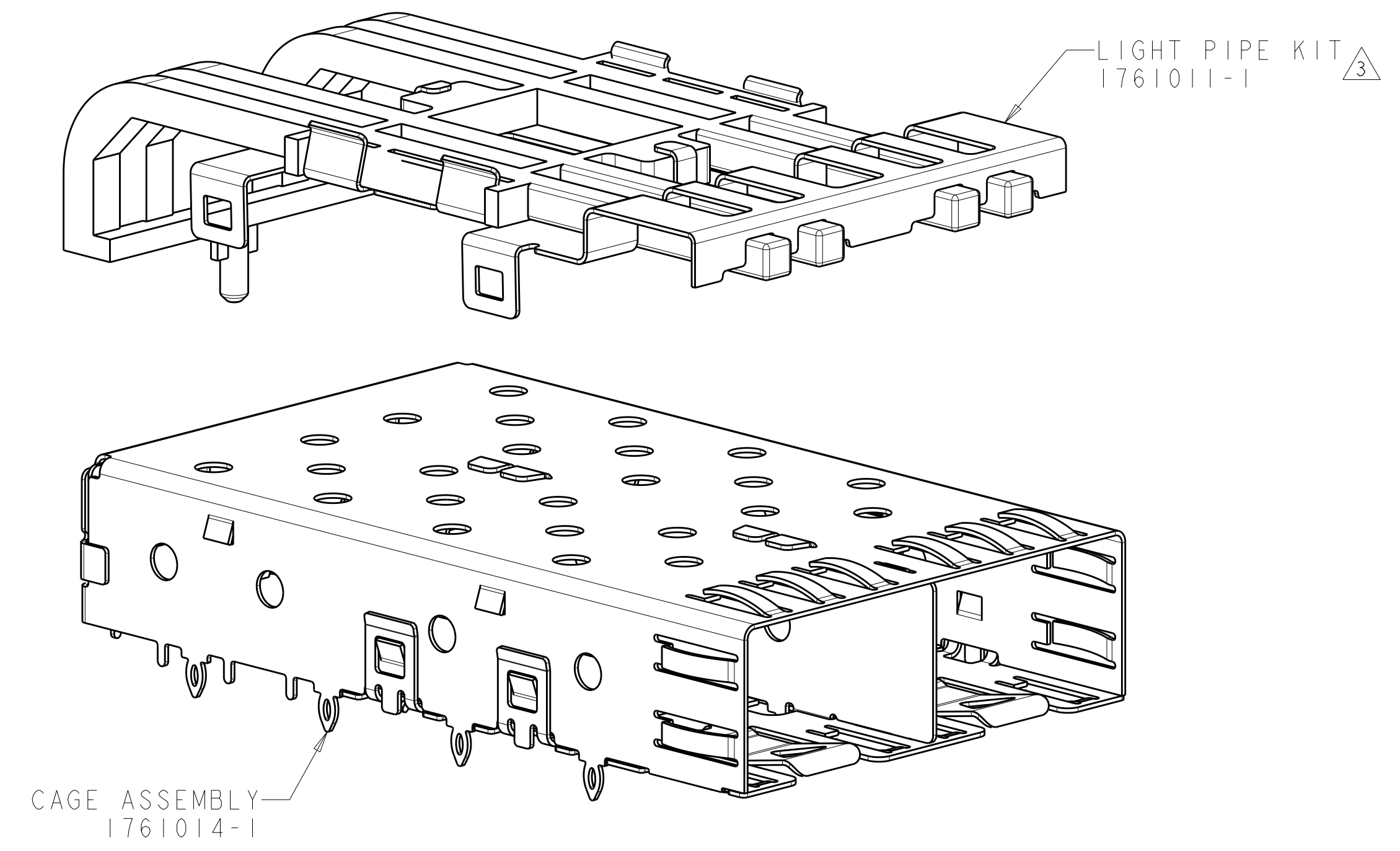
Tel: +86-755-8981 8866 Fax: +86-755-8427 6832

Email & Skype: info@chipsmall.com Web: www.chipsmall.com

Address: A1208, Overseas Decoration Building, #122 Zhenhua RD., Futian, Shenzhen, China

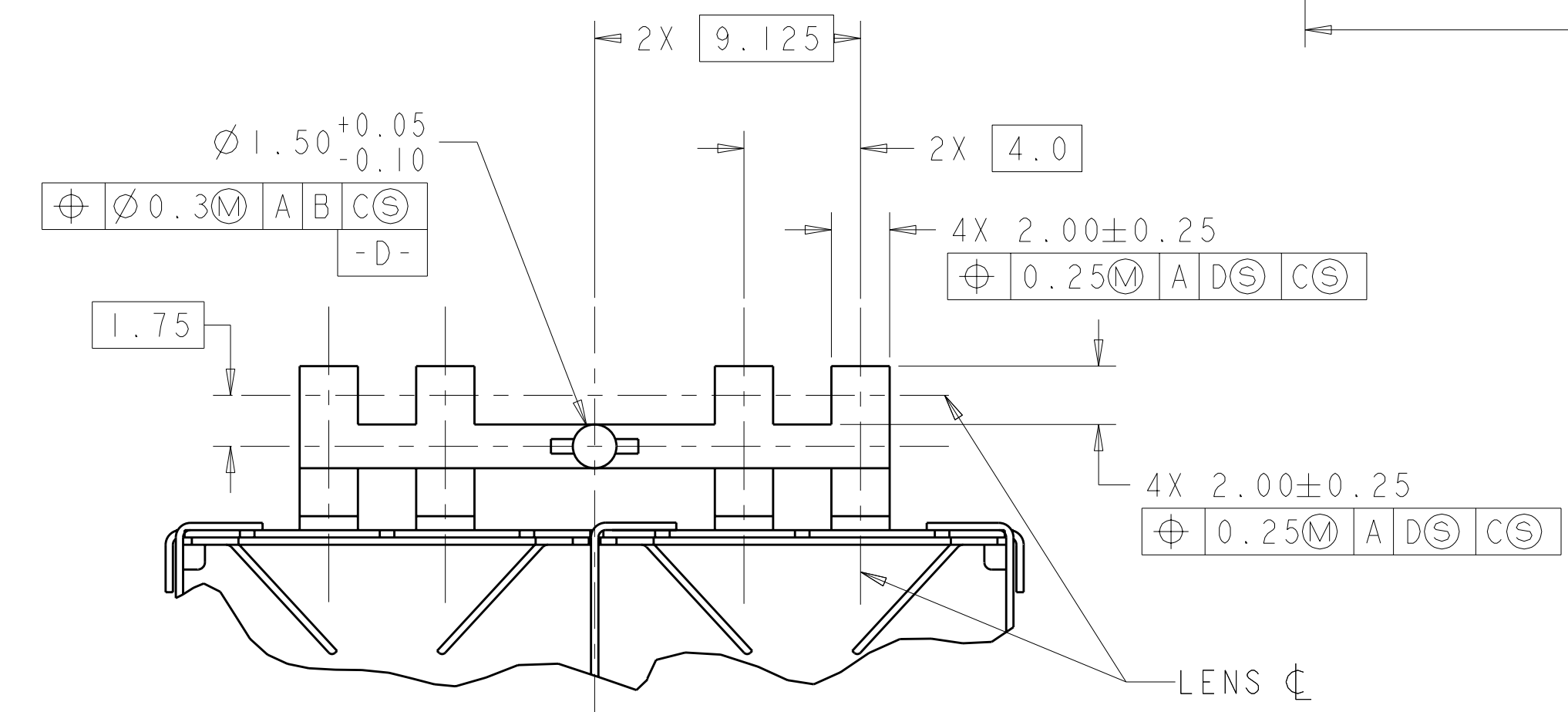
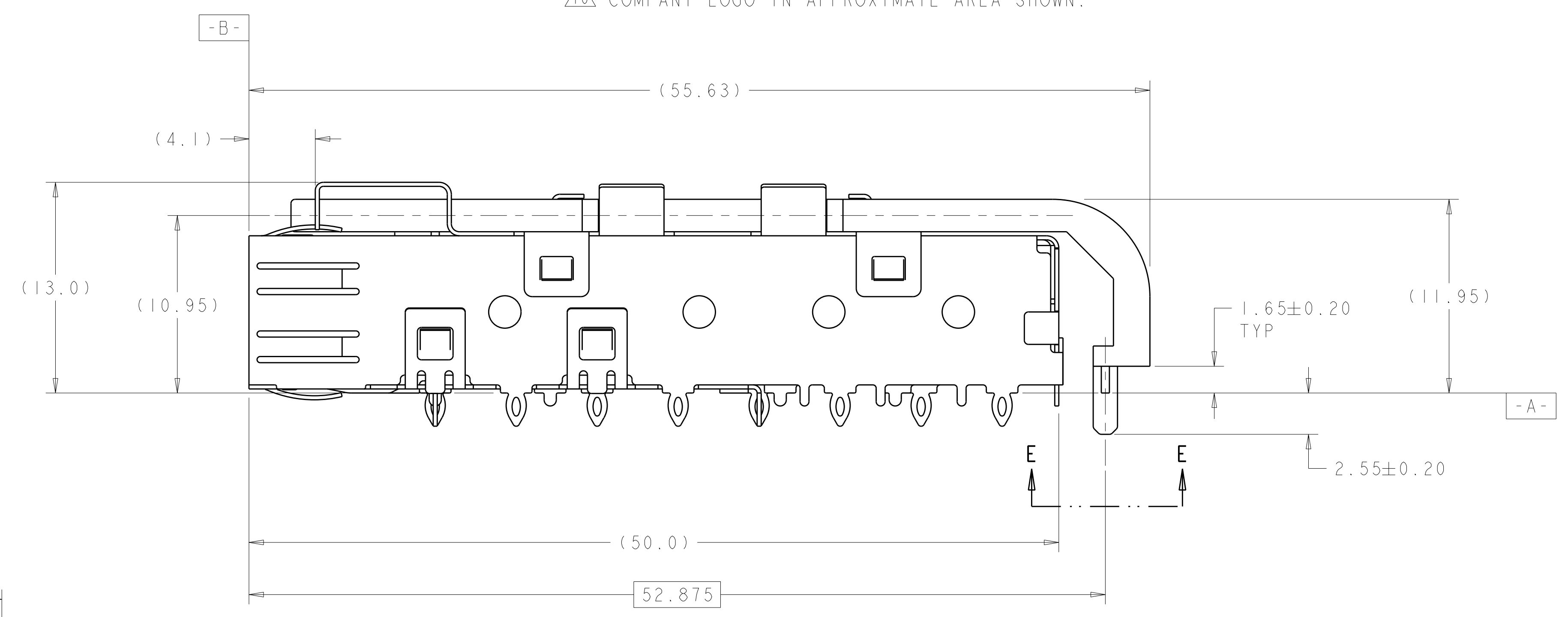
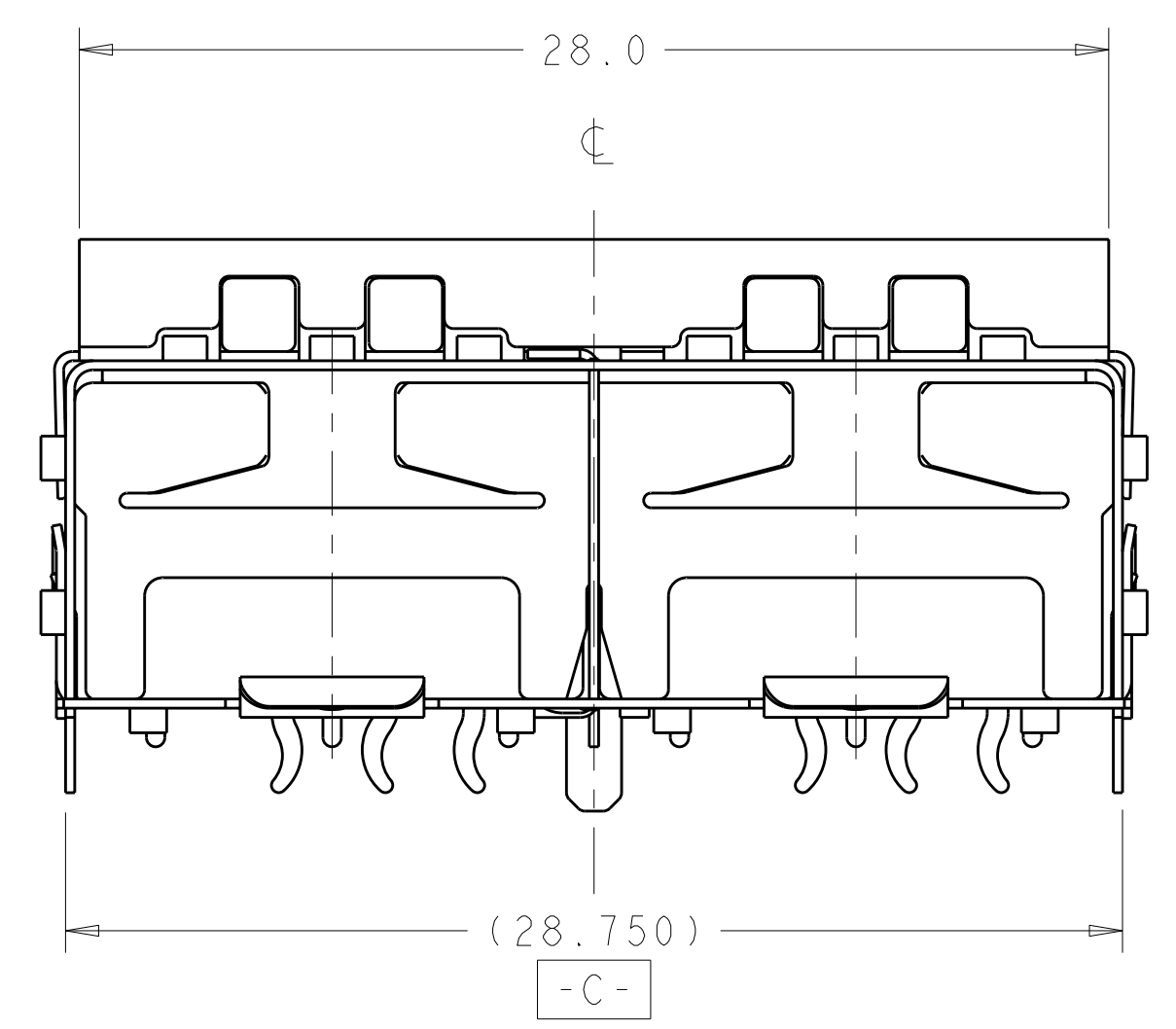


LOC	DIST	REV	DATE	BY	CHK	APPV
GP	00	E1	18APR2011	RK	HMR	

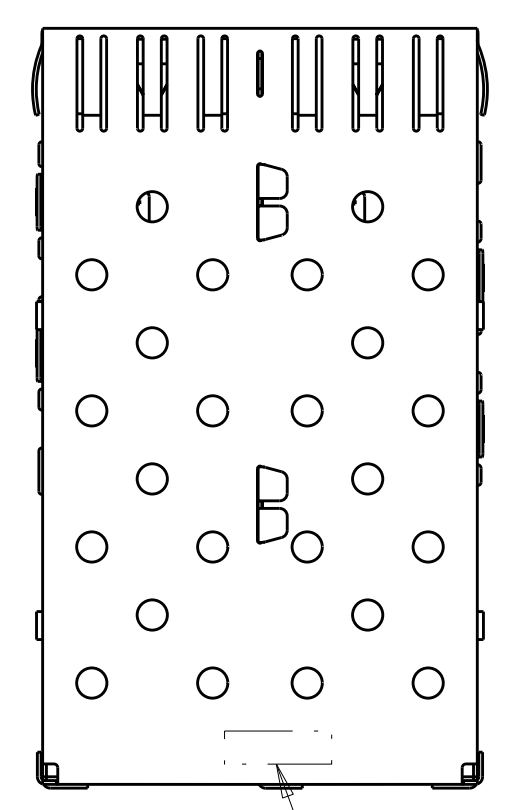


- △ PADS AND VIAS CHASSIS GROUND.
- △ DATUM AND BASIC DIMENSIONS ESTABLISHED BY CUSTOMER.
- △ LIGHT PIPE KIT WHICH IS SEPARATE FROM CAGE ASSEMBLY. KIT TO BE ATTACHED AFTER SEATING OF 1761014-1 ON PC BOARD.
- 4. LABEL ON CAGE WILL HAVE PART NUMBER 1761014-1.
- 5. REFERENCE STYLE 1 ON APPLICATION SPECIFICATION 114-13165 FOR ADDITIONAL INFORMATION ON CAGE ASSEMBLIES WITH LIGHT PIPES.
- △ REFERENCE APPLICATION SPEC 114-13120, HOLE A, FOR RECOMMENDED DRILL HOLE DIAMETER AND PLATING THICKNESSES.
- △ REFERENCE APPLICATION SPEC 114-13120, HOLE B, FOR RECOMMENDED DRILL HOLE DIAMETER AND PLATING THICKNESSES.
- △ PATTERN REPEATS FOR EACH PORT. SPACING BETWEEN PORTS IS 14.25mm.
- △ MINIMUM PC BOARD THICKNESS = 1.50mm.
- △ COMPANY LOGO IN APPROXIMATE AREA SHOWN.

1761007-1  
SCALE 4:1



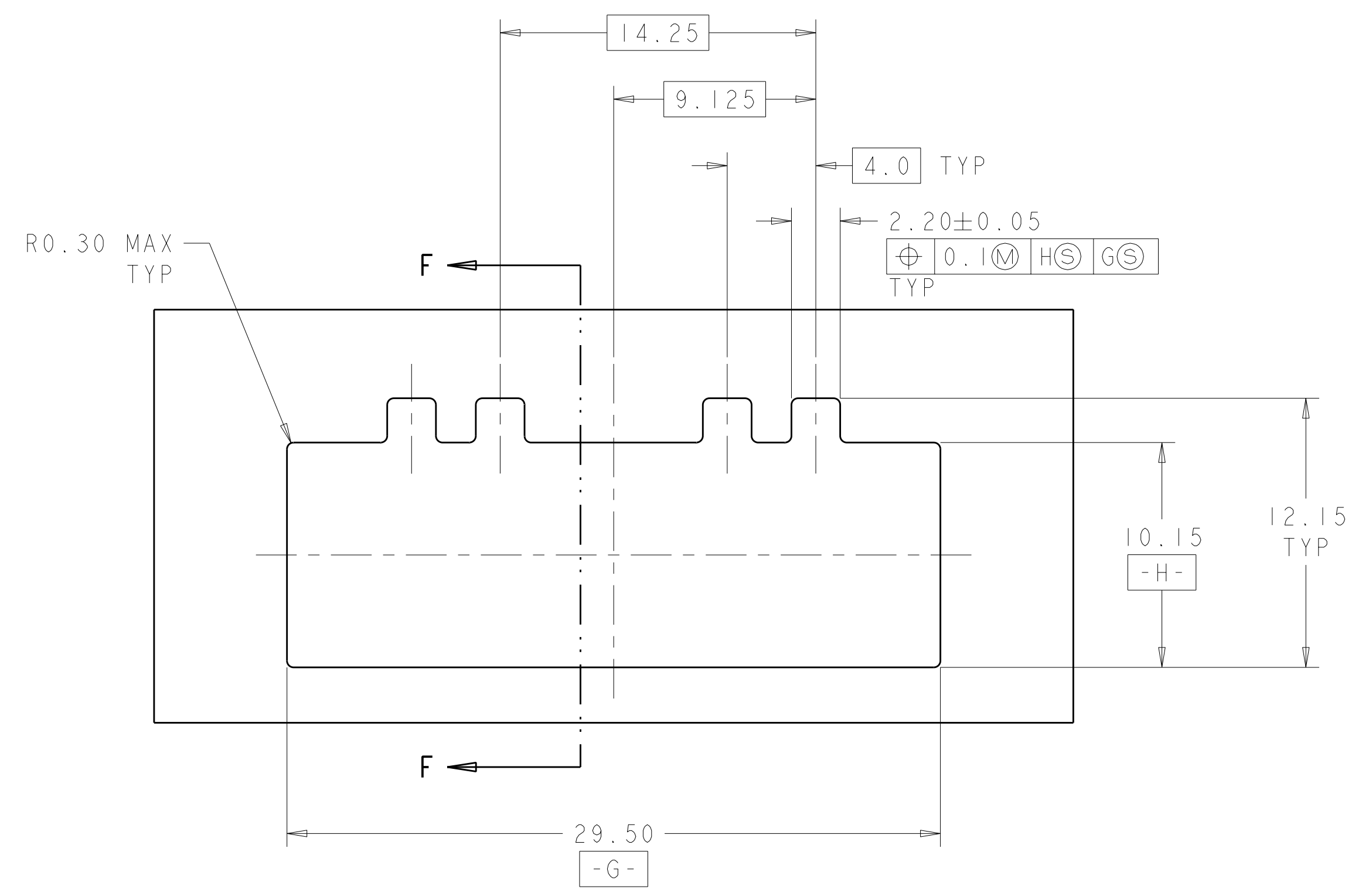
VIEW E-E  
ROTATED 90° COUNTERCLOCKWISE



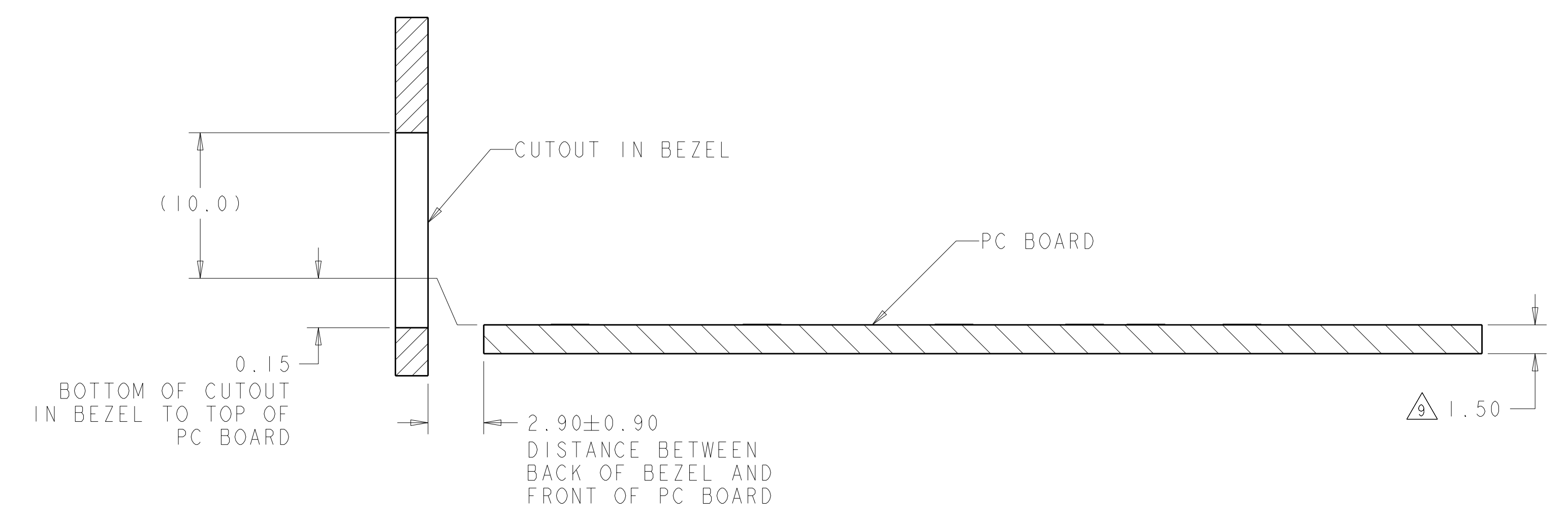
IX2 ASSEMBLY	1761007-1
DESCRIPTION	PART NO

THIS DRAWING IS A CONTROLLED DOCUMENT.		DWN: WM.VAN SCOOC 16JAN2004		NAME: SFP	
DIMENSIONS: mm		CHK: M.PHILLIPS 16JAN2004		PRODUCT SPEC: 108-1950	
TOLERANCES UNLESS OTHERWISE SPECIFIED:		APPV: M.PHILLIPS 16JAN2004		APPLICATION SPEC: 114-13120	
9 PLC ±0.10		MATERIAL: -		RESTRICTED TO: -	
1 PLC ±0.10		FINISH: -		SCALE: 5:1	
2 PLC ±0.10		WEIGHT: -		SHEET 1 OF 3	
3 PLC ±0.10		CUSTOMER DRAWING		REV: E1	
4 PLC ±0.10		SIZE: CAGE CODE DRAWING NO: A100779C=1761007			
ANGLES ±0.10					

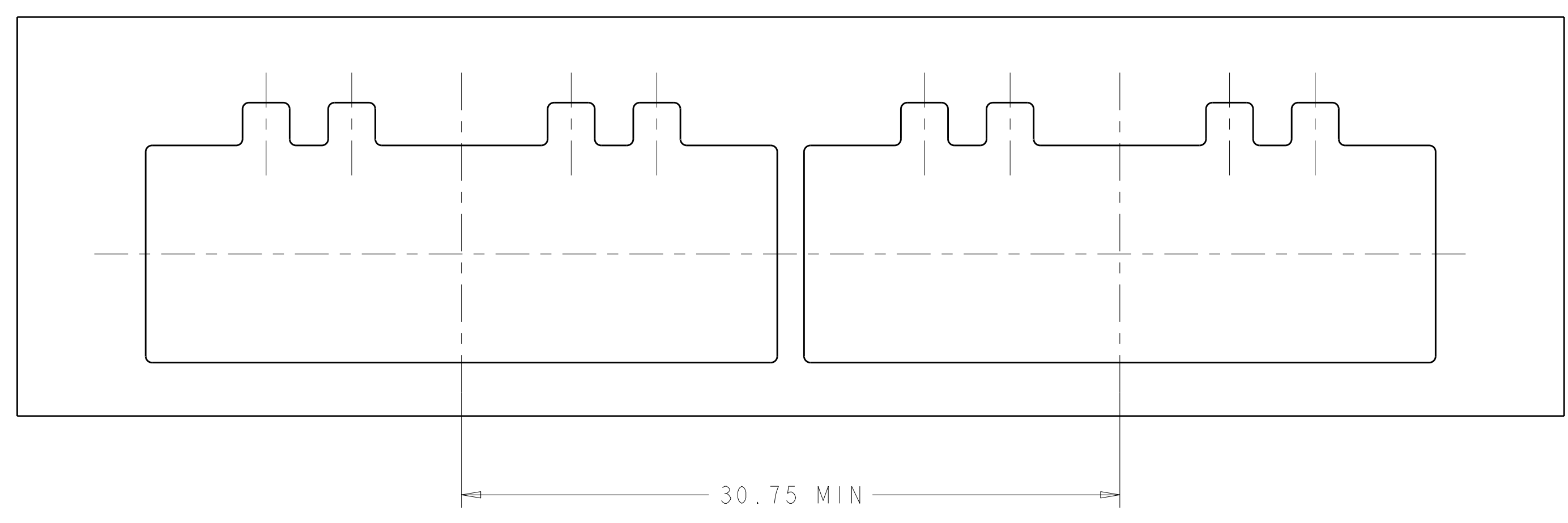
LOC	DIST	REVISIONS			
GP	00	REV	DATE	BY	APPV
		-	SEE SHEET 1	-	-



RECOMMENDED BEZEL CUTOUT



SECTION F-F  
RECOMMENDED BEZEL CONFIGURATION



THIS DRAWING IS A CONTROLLED DOCUMENT.		DWN: MM VAN SCOOC 16 JAN 2004		TE Connectivity	
DIMENSIONS: mm		CHK: M PHILLIPS 16 JAN 2004			
TOLERANCES UNLESS OTHERWISE SPECIFIED:		APVD: M PHILLIPS 16 JAN 2004		NAME: SFP	
9 PLC ±0.10		PRODUCT SPEC		1X2 CAGE ASSEMBLY WITH LIGHT PIPE	
2 PLC ±0.10		APPLICATION SPEC		SIZE: CAGE CODE: DRAWING NO: RESTRICTED TO	
3 PLC ±0.10		114-13120		A100779C=1761007	
4 PLC ±0.10		WEIGHT: -		SCALE: 5:1 SHEET 2 OF 3 REV: E1	
ANGLES: ±0.5°		FINISH: -		CUSTOMER DRAWING	



