



Chipsmall Limited consists of a professional team with an average of over 10 year of expertise in the distribution of electronic components. Based in Hongkong, we have already established firm and mutual-benefit business relationships with customers from,Europe,America and south Asia,supplying obsolete and hard-to-find components to meet their specific needs.

With the principle of “Quality Parts,Customers Priority,Honest Operation,and Considerate Service”,our business mainly focus on the distribution of electronic components. Line cards we deal with include Microchip,ALPS,ROHM,Xilinx,Pulse,ON,Everlight and Freescale. Main products comprise IC,Modules,Potentiometer,IC Socket,Relay,Connector.Our parts cover such applications as commercial,industrial, and automotives areas.

We are looking forward to setting up business relationship with you and hope to provide you with the best service and solution. Let us make a better world for our industry!



## Contact us

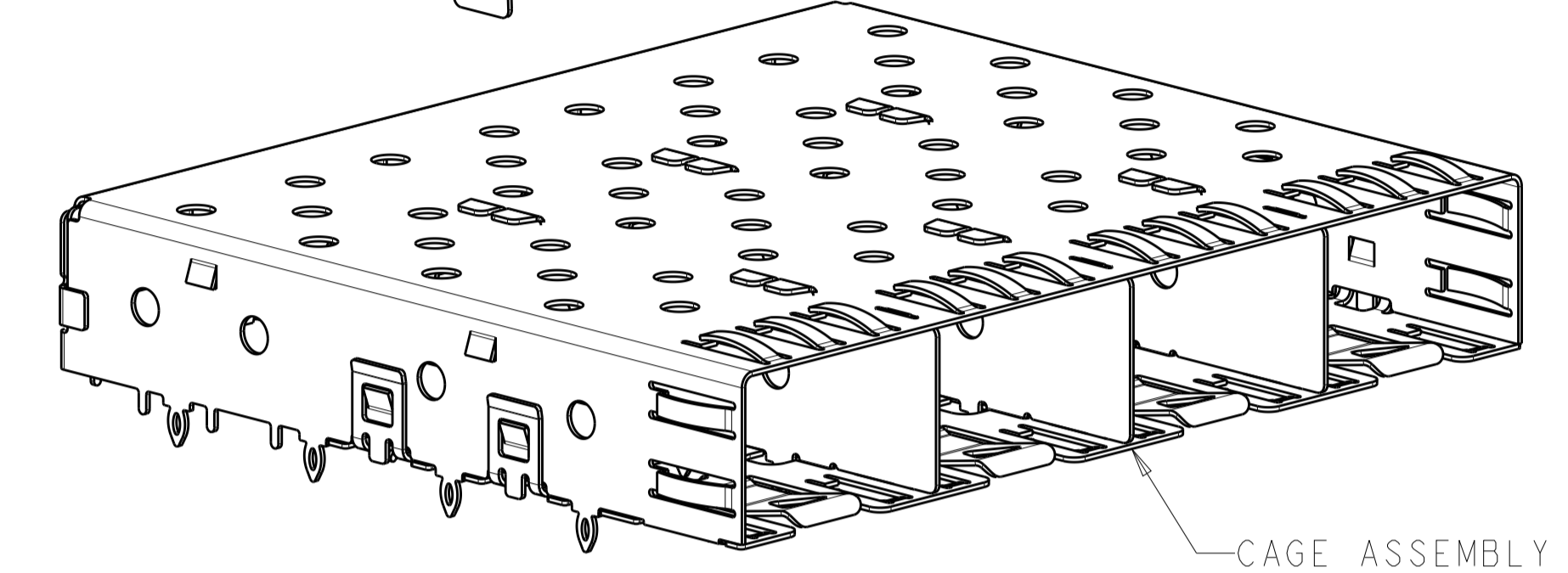
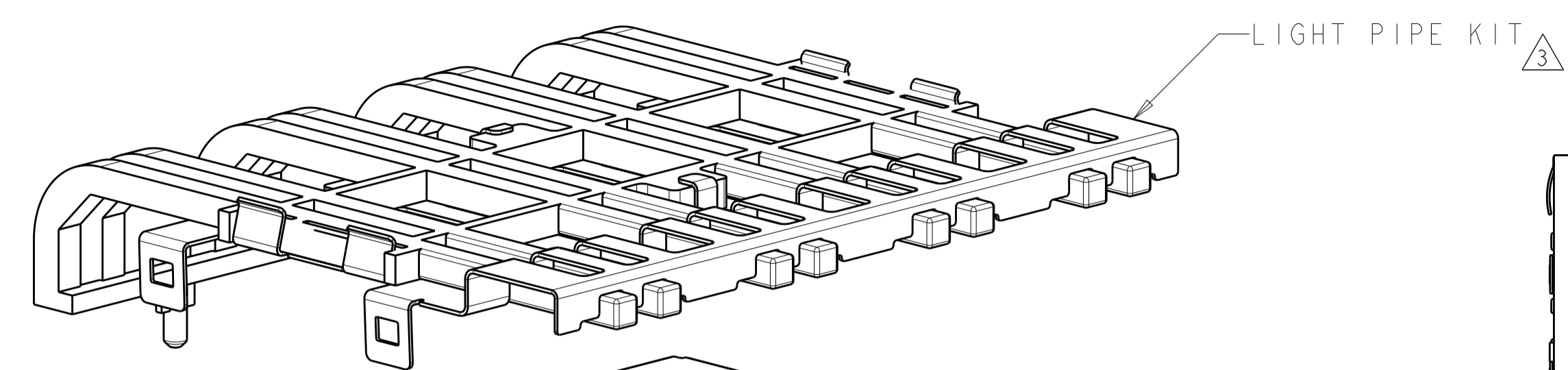
Tel: +86-755-8981 8866 Fax: +86-755-8427 6832

Email & Skype: info@chipsmall.com Web: www.chipsmall.com

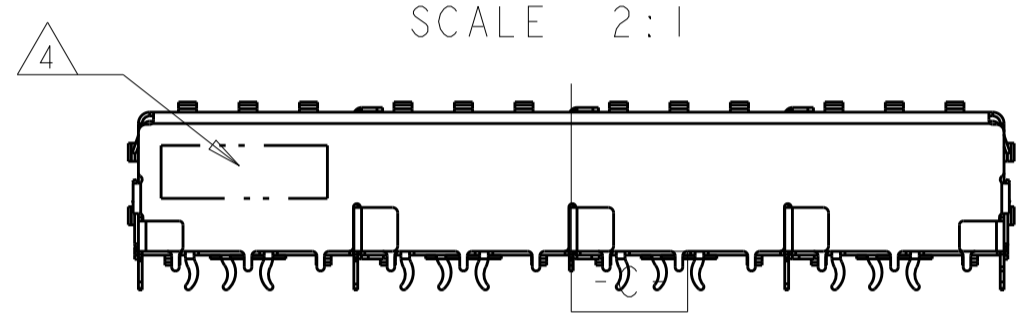
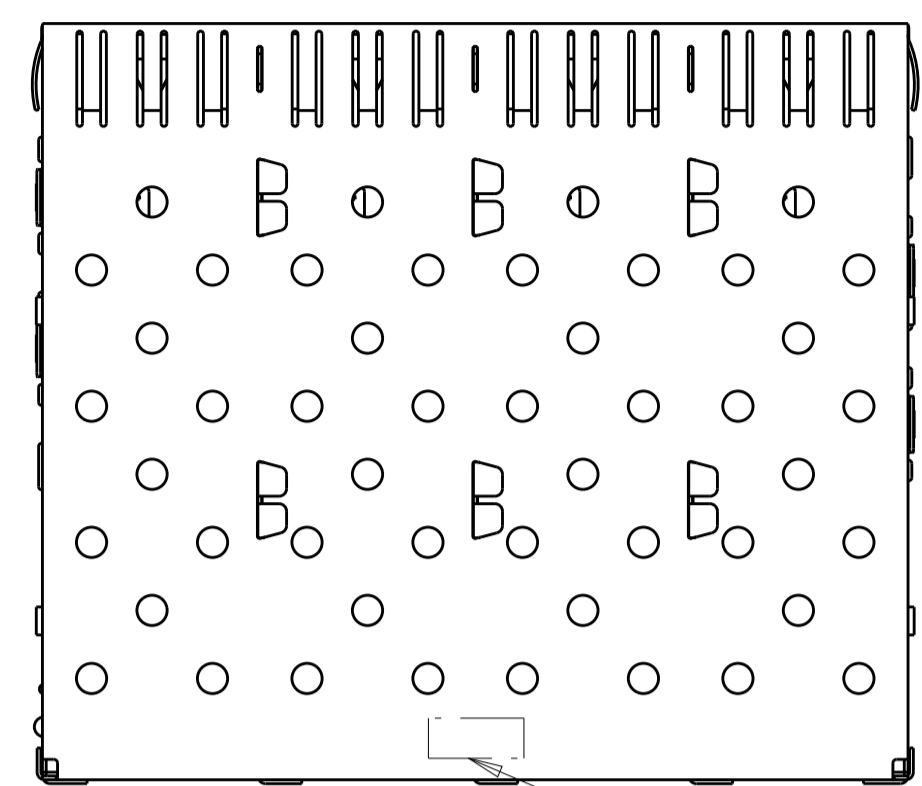
Address: A1208, Overseas Decoration Building, #122 Zhenhua RD., Futian, Shenzhen, China



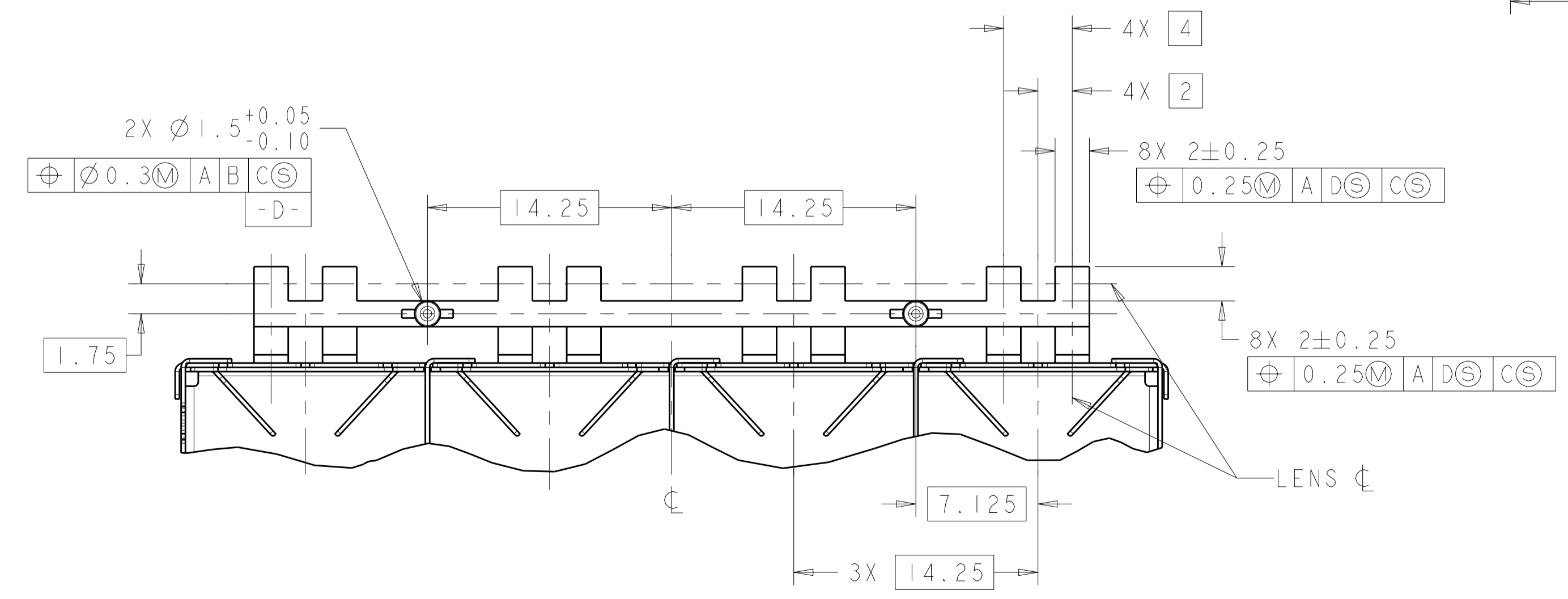
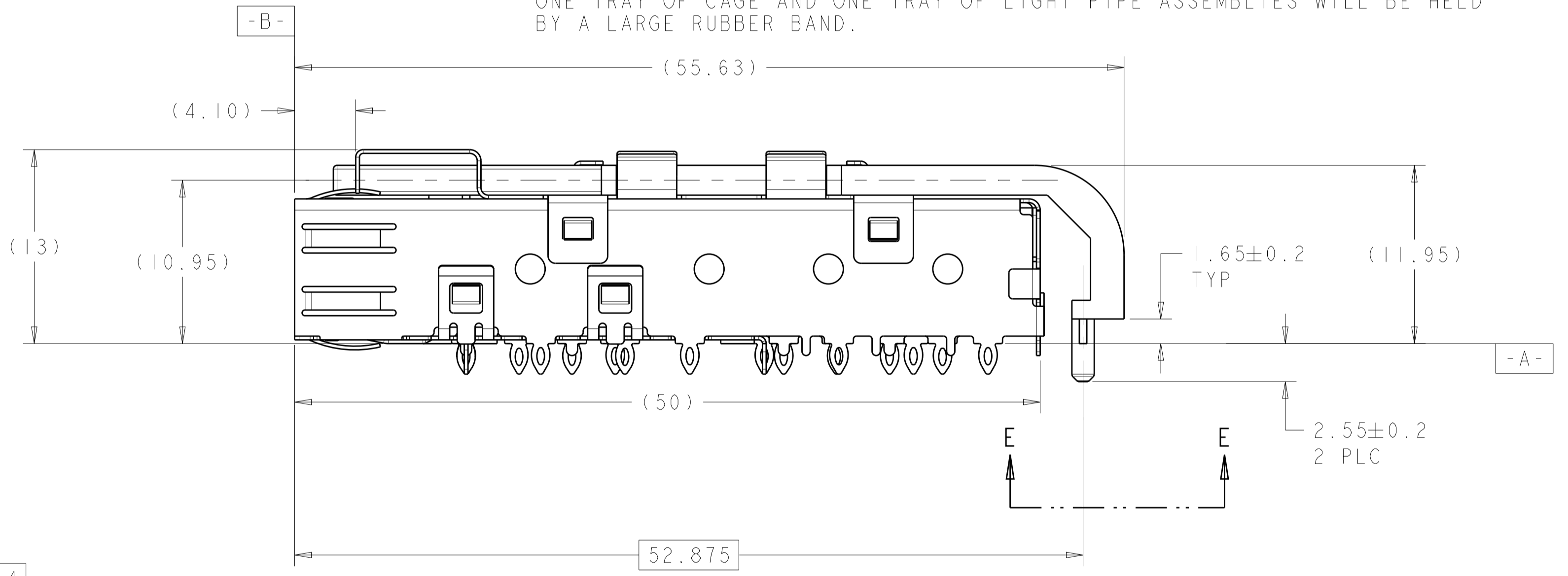
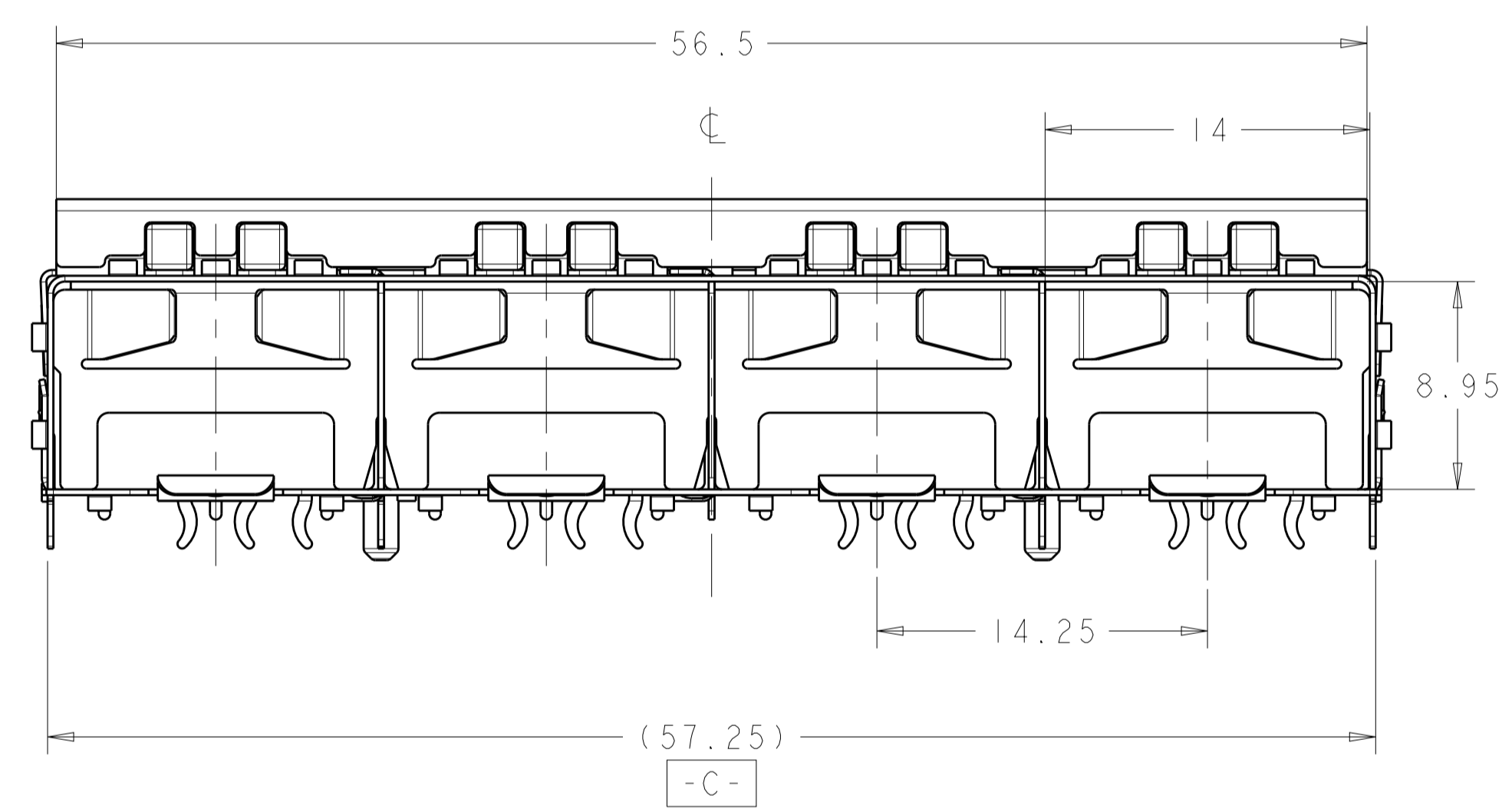
LOC	DIST	REVISIONS					
GP	00	P	LTN	DESCRIPTION	DATE	DWN	APVD
		E1		REVISED PER ECO-11-007052	06APR2011	JY	CW
		F		REVISED PER ECO-14-000886	20FEB2014	JW	SH
		F1		REVISED PER ECO-14-010419	11JUL2014	JW	SH
		G		REVISED PER ECO-15-013594	22SEP2015	JW	SH



1761008-1, -2, -3, -4  
SCALE 3:1



- △ PADS AND VIAS CHASSIS GROUND.
- △ DATUM AND BASIC DIMENSIONS ESTABLISHED BY CUSTOMER.
- △ LIGHT PIPE KIT WHICH IS SEPARATE FROM THE CAGE ASSEMBLY. KIT TO BE ATTACHED AFTER SEATING OF 1658744-1&3 ON PCB.
- △ DATE CODE AND PART NUMBER IN APPROXIMATE AREA SHOWN LABEL ON CAGE ASSEMBLY WILL HAVE PART NUMBER 1658744-1&3.
- 5. REFERENCE STYLE 1 ON APPLICATION SPECIFICATION 114-13165 FOR ADDITIONAL INFORMATION ON CAGE ASSEMBLIES WITH LIGHT PIPES.
- △ REFERENCE APPLICATION SPEC 114-13120, HOLE A, FOR RECOMMENDED DRILL HOLE DIAMETER AND PLATING THICKNESSES.
- △ REFERENCE APPLICATION SPEC 114-13120, HOLE B, FOR RECOMMENDED DRILL HOLE DIAMETER AND PLATING THICKNESSES.
- △ PATTERN REPEATS FOR EACH PORT. SPACING BETWEEN PORTS IS 14.25mm.
- △ MINIMUM PC BOARD THICKNESS = 1.50mm.
- △ COMPANY LOGO IN APPROXIMATE AREA SHOWN.
- △ BOX WILL CONTAIN TRAYS OF CAGES AND TRAYS OF LIGHT PIPE ASSEMBLIES.
- △ BOX WILL CONTAIN TRAYS OF CAGES AND TRAYS OF LIGHT PIPE ASSEMBLIES. ONE TRAY OF CAGE AND ONE TRAY OF LIGHT PIPE ASSEMBLIES WILL BE HELD BY A LARGE RUBBER BAND.



VIEW E-E  
ROTATED 90° COUNTERCLOCKWISE

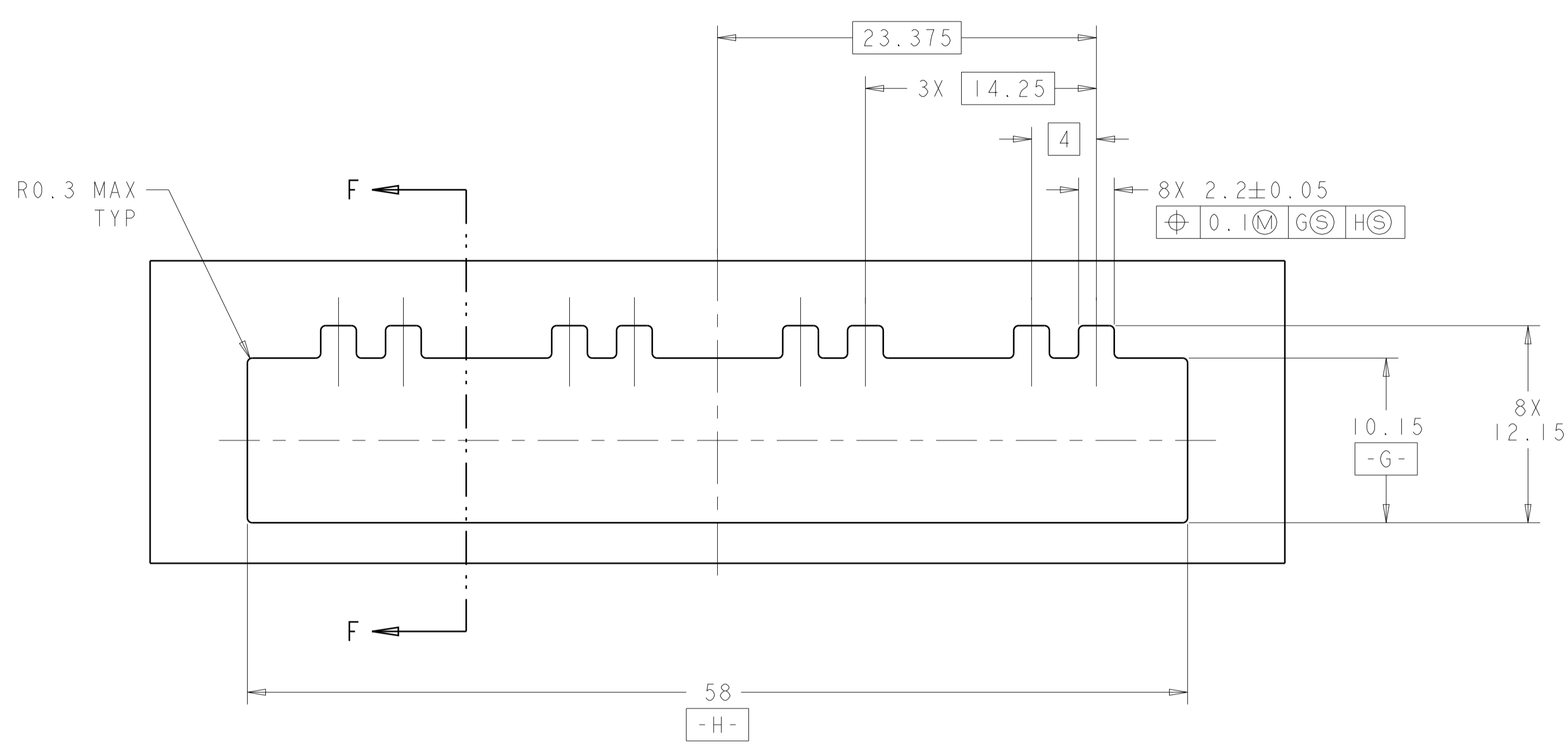
**SUPERSEDED BY:**  
1761008-4  
**SUPERSEDED BY:**  
1761008-3

LIGHT PIPE KIT	CAGE ASSEMBLY	PACKAGE	DESCRIPTION	PART NO.
1761012-3	1658744-3	△	1X4 ASSEMBLY	1761008-4
1761012-3	1658744-3	△	1X4 ASSEMBLY	1761008-3
1761012-1	1658744-1	△	1X4 ASSEMBLY	1761008-2
1761012-1	1658744-1	△	1X4 ASSEMBLY	1761008-1

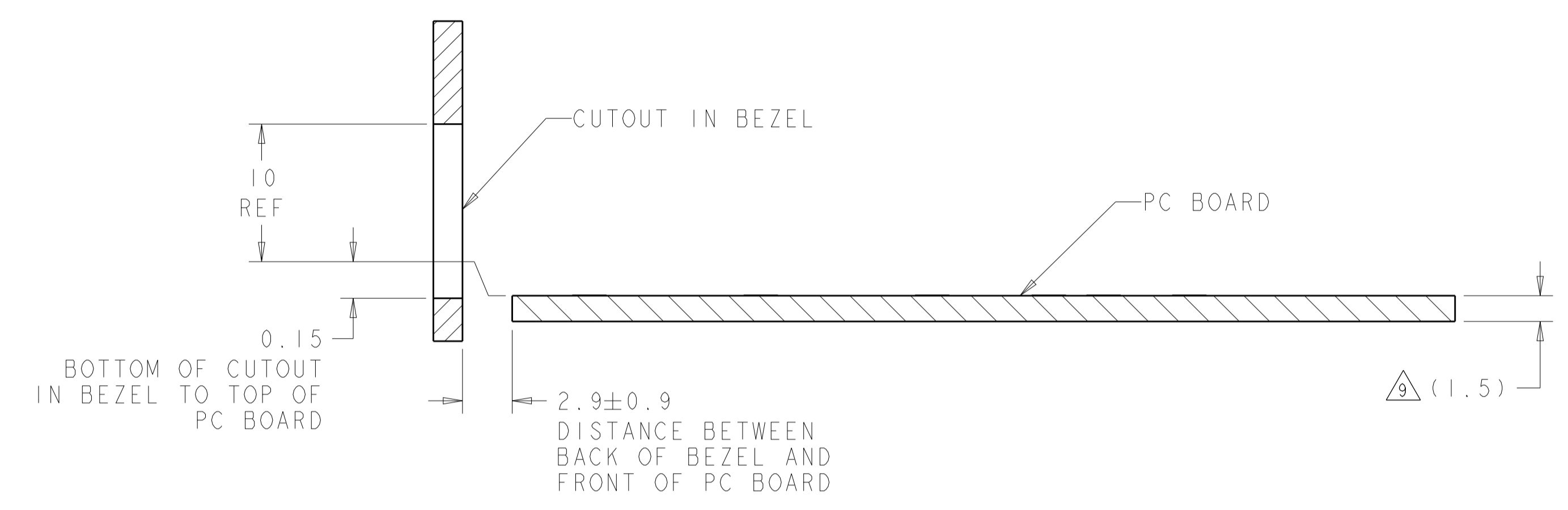
  

THIS DRAWING IS A CONTROLLED DOCUMENT.		DWN W. VAN SCOYK 02FEB2004	TE Connectivity
DIMENSIONS: mm		CHK M. PHILLIPS 02FEB2004	
TOLERANCES UNLESS OTHERWISE SPECIFIED:		APVD M. PHILLIPS 02FEB2004	NAME SFP
0 PLC	±0.1	PRODUCT SPEC	108-1950
1 PLC	±0.1	APPLICATION SPEC	114-13120
2 PLC	±0.10	SIZE	A100779
3 PLC	±0.100	SCALE	4:1
4 PLC	±0.100	WEIGHT	SHEET 1 OF 3
ANGLES	±0°30'	CUSTOMER DRAWING	REV G

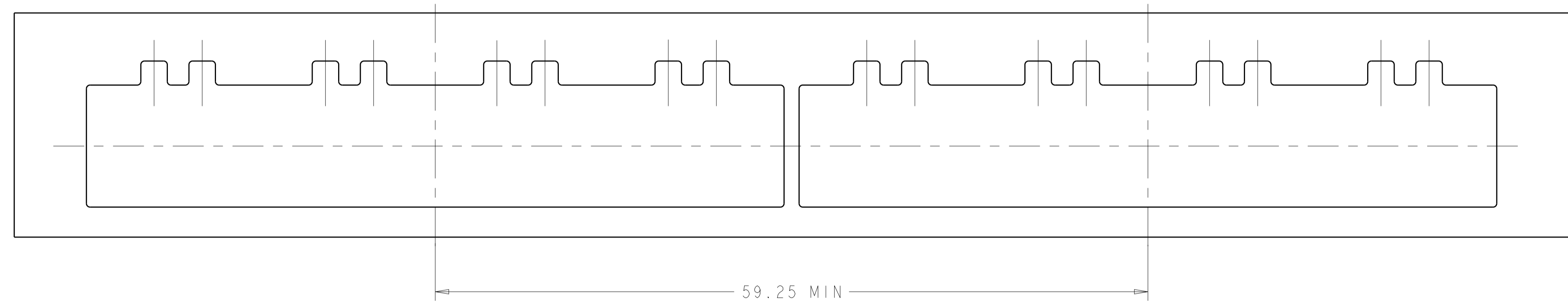
LOC		DIST		REVISIONS			
P	LTN	DESCRIPTION	DATE	DWN	APVD		
-	-	SEE SHEET 1	-	-	-		



RECOMMENDED BEZEL CUTOUT



SECTION F-F  
 RECOMMENDED BEZEL CONFIGURATION

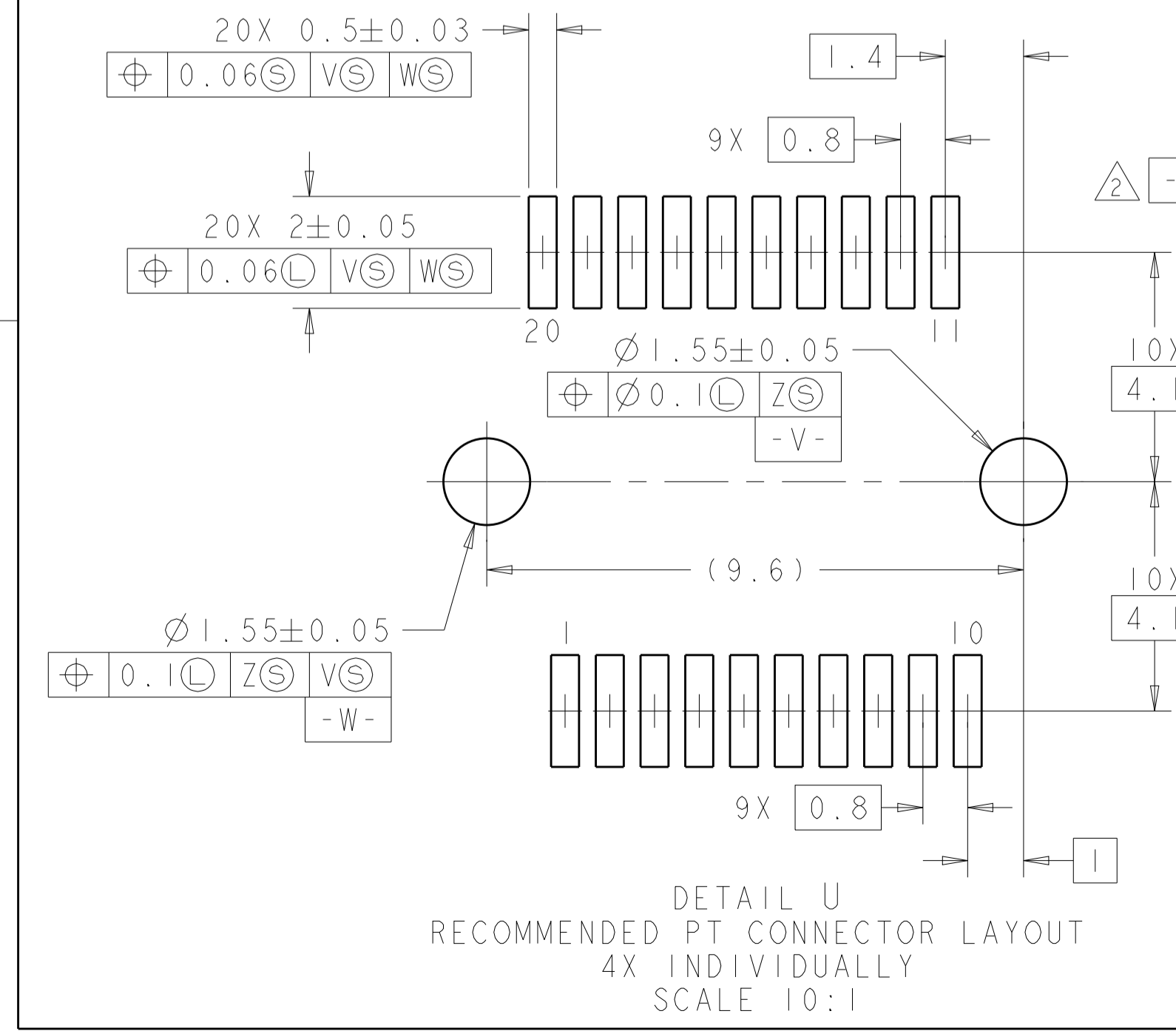
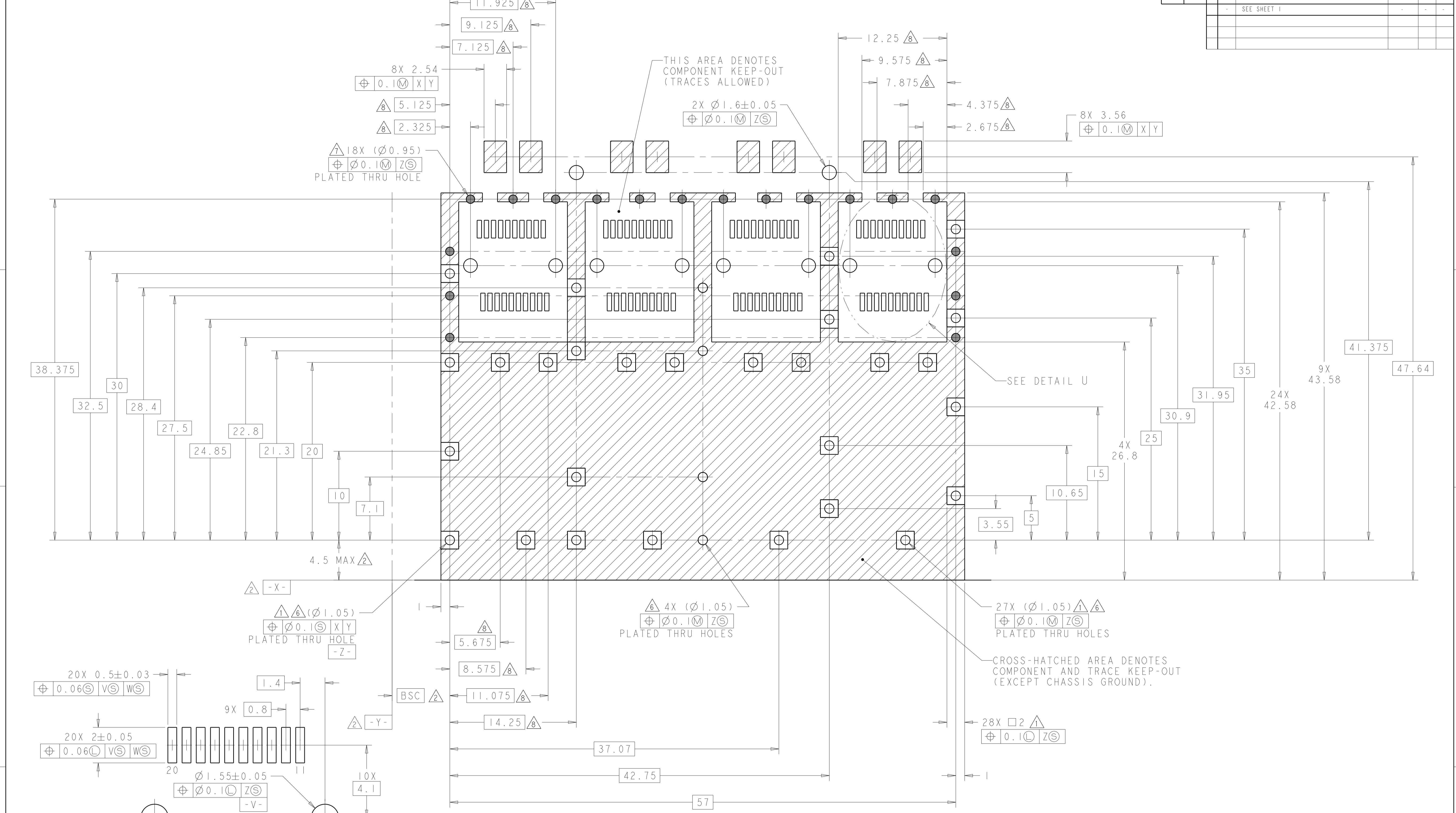


THIS DRAWING IS A CONTROLLED DOCUMENT.		DWN: W. VAN SCOY	02FEB2004	TE Connectivity
DIMENSIONS: mm		CHK: M. PHILLIPS	02FEB2004	
TOLERANCES UNLESS OTHERWISE SPECIFIED:		APVD: M. PHILLIPS	02FEB2004	NAME: SFP
0 PLC	±0.1	PRODUCT SPEC		1X4 CAGE ASSEMBLY
1 PLC	±0.1	PRODUCT SPEC		WITH LIGHT PIPE
2 PLC	±0.10	APPLICATION SPEC		SIZE: A100779
3 PLC	±0.100	APPLICATION SPEC		CAGE CODE: C=1761008
4 PLC	±	APPLICATION SPEC		DRAWING NO: 114-13120
ANGLES	±	WEIGHT		RESTRICTED TO
FINISH	±0°30'	CUSTOMER DRAWING		SCALE: 4:1
MATERIAL		SHEET 2 OF 3		REV G

LOC	DIST	REV	DATE	BY	APPV
GP	00				

REVISIONS			
REV	DATE	BY	APPV
-	-	-	-
-	-	-	-



THIS DRAWING IS A CONTROLLED DOCUMENT.		DWN: W. VAN SCOOC 02FEB2004	TE Connectivity
DIMENSIONS: mm		CHK: M. PHILLIPS 02FEB2004	
TOLERANCES UNLESS OTHERWISE SPECIFIED:		APVD: M. PHILLIPS 02FEB2004	NAME: SFP
0 PLC $\pm 0.1$		PRODUCT SPEC: 108-1950	SIZE: 1X4 CAGE ASSEMBLY WITH LIGHT PIPE
1 PLC $\pm 0.1$		APPLICATION SPEC: 114-13120	RESTRICTED TO: -
2 PLC $\pm 0.10$		WEIGHT: -	SCALE: 4:1
3 PLC $\pm 0.100$		CUSTOMER DRAWING	SHEET 3 OF 3
4 PLC $\pm$			REV G
ANGLES: $\pm 30^\circ$			
FINISH: -			