



Chipsmall Limited consists of a professional team with an average of over 10 year of expertise in the distribution of electronic components. Based in Hongkong, we have already established firm and mutual-benefit business relationships with customers from,Europe,America and south Asia,supplying obsolete and hard-to-find components to meet their specific needs.

With the principle of “Quality Parts,Customers Priority,Honest Operation,and Considerate Service”,our business mainly focus on the distribution of electronic components. Line cards we deal with include Microchip,ALPS,ROHM,Xilinx,Pulse,ON,Everlight and Freescale. Main products comprise IC,Modules,Potentiometer,IC Socket,Relay,Connector.Our parts cover such applications as commercial,industrial, and automotives areas.

We are looking forward to setting up business relationship with you and hope to provide you with the best service and solution. Let us make a better world for our industry!



Contact us

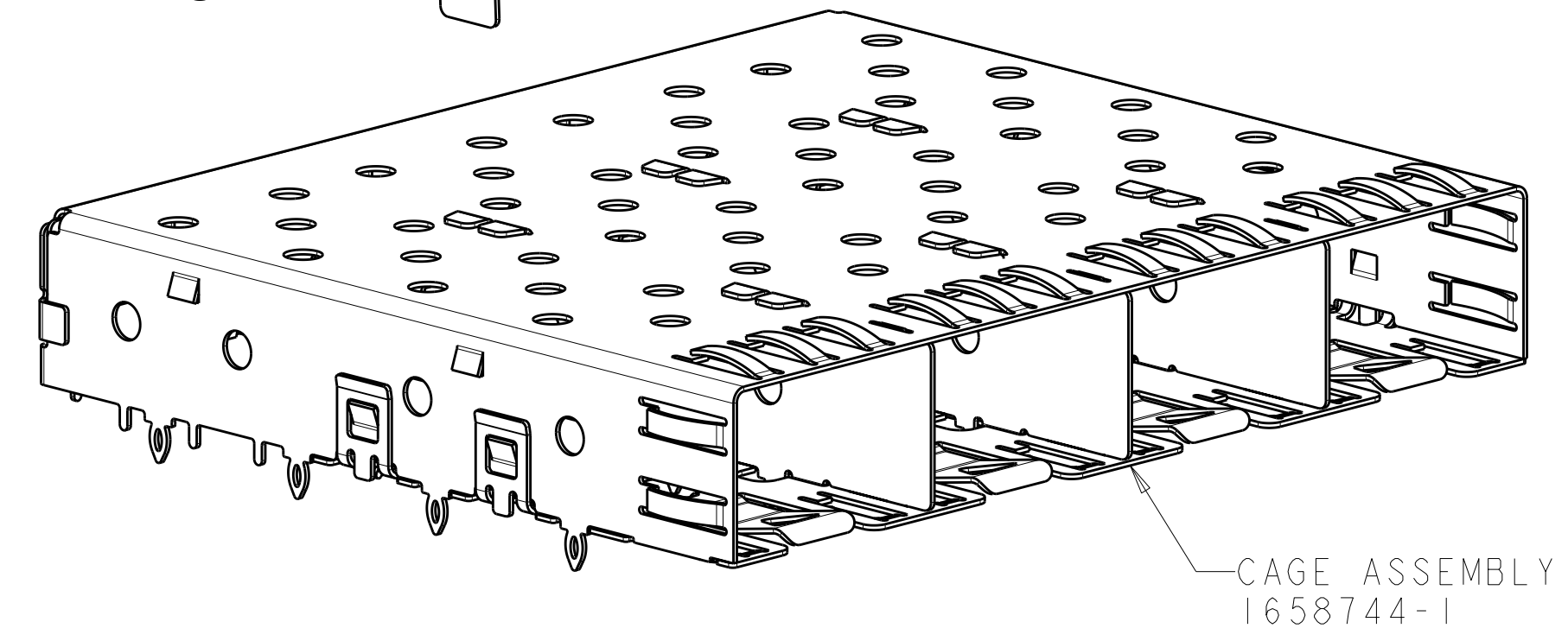
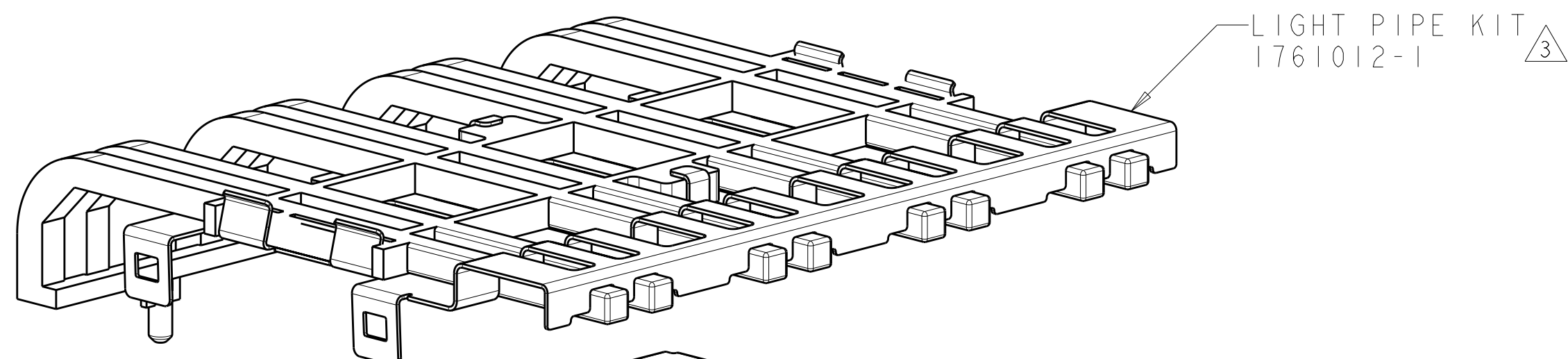
Tel: +86-755-8981 8866 Fax: +86-755-8427 6832

Email & Skype: info@chipsmall.com Web: www.chipsmall.com

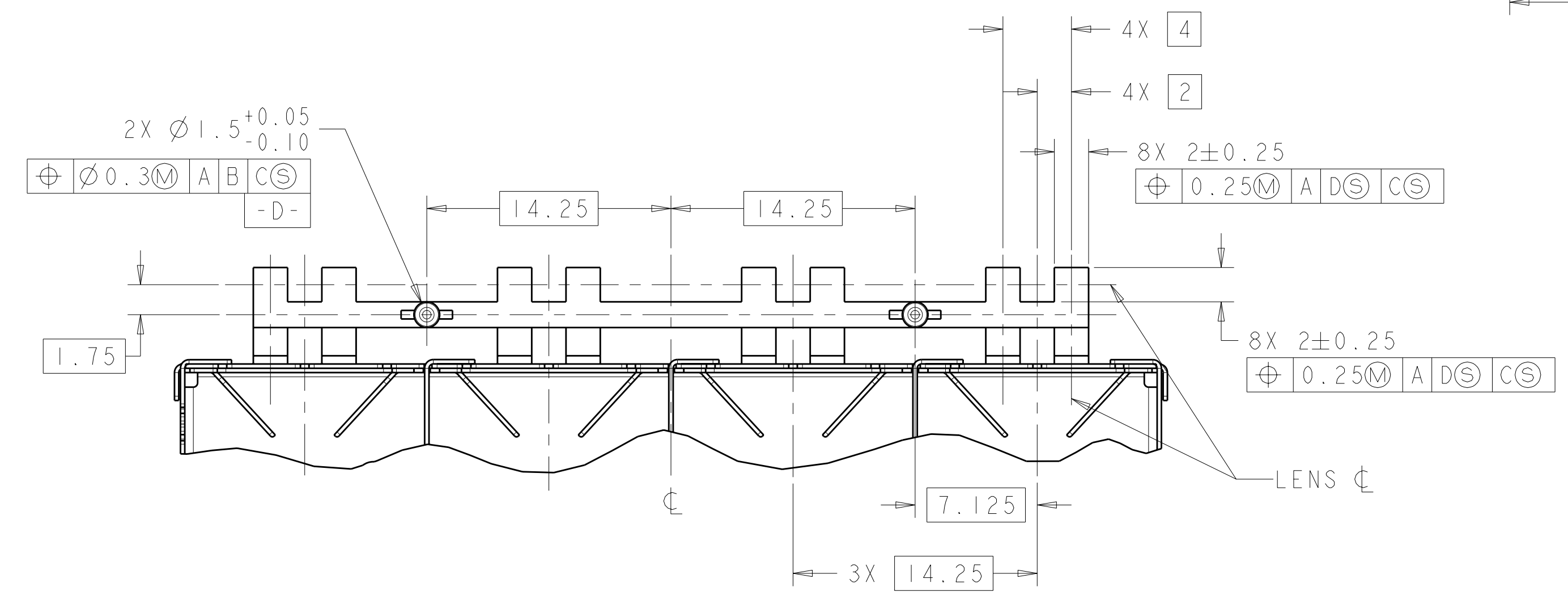
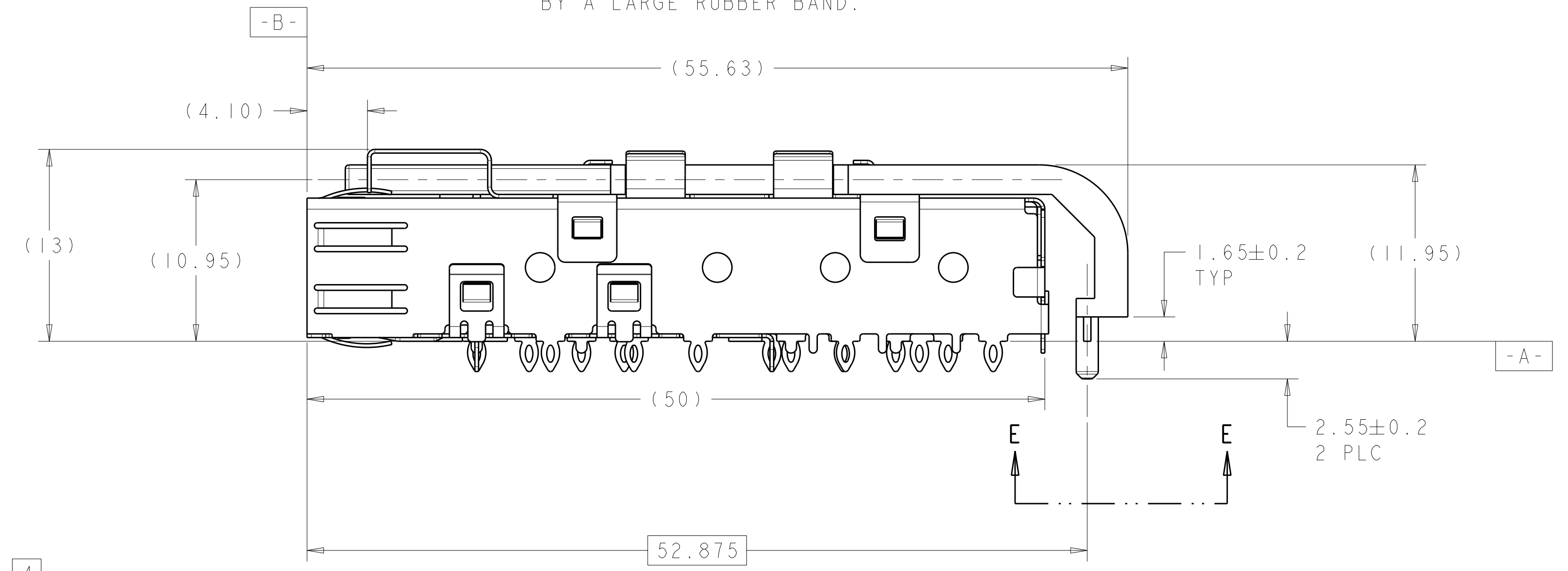
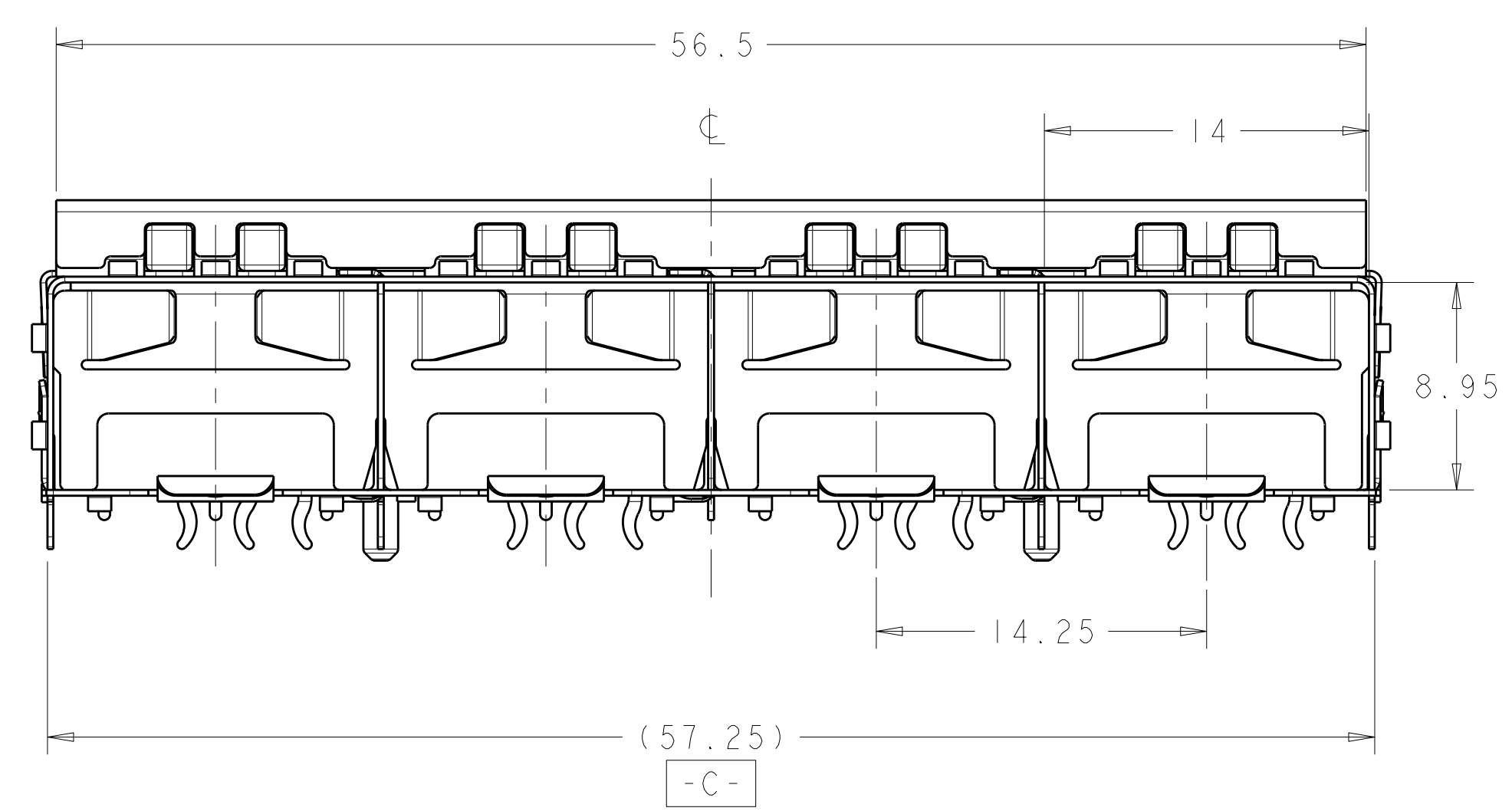
Address: A1208, Overseas Decoration Building, #122 Zhenhua RD., Futian, Shenzhen, China



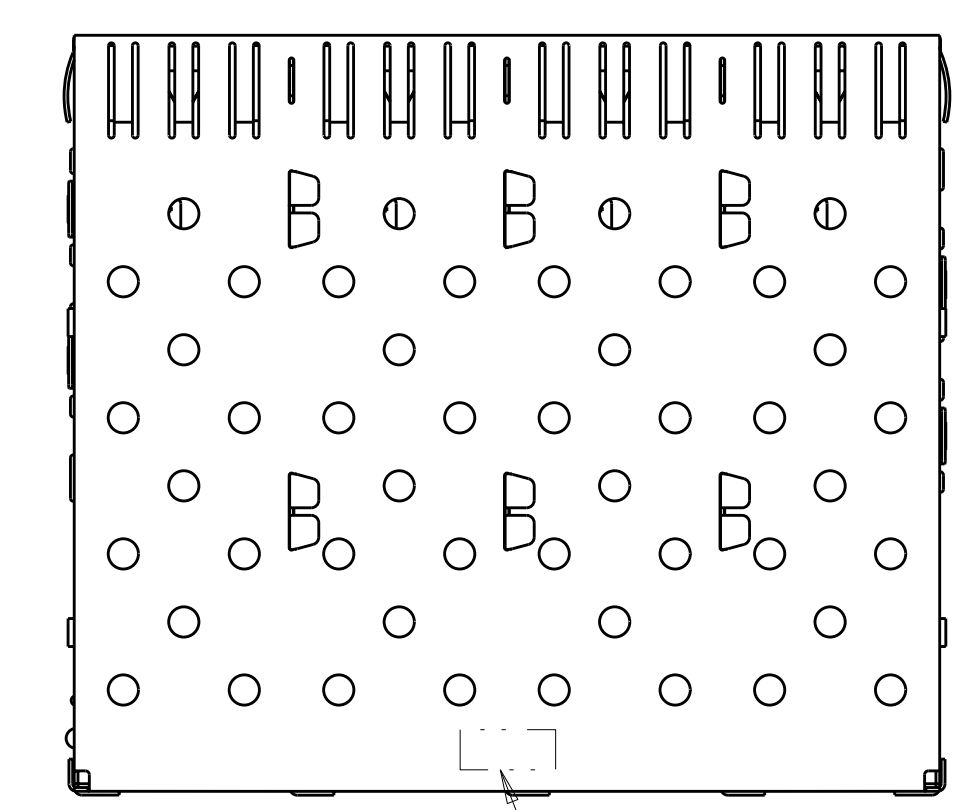
LOC	DIST	REV	DATE	BY	APPV
GP	00	E1	06APR2011	JY	CW
		REVISIONS			
		DESCRIPTION	DATE	BY	APPV
		REVISED PER ECO-11-007052	06APR2011	JY	CW



1761008-1
SCALE 3:1



VIEW E-E
ROTATED 90° COUNTERCLOCKWISE

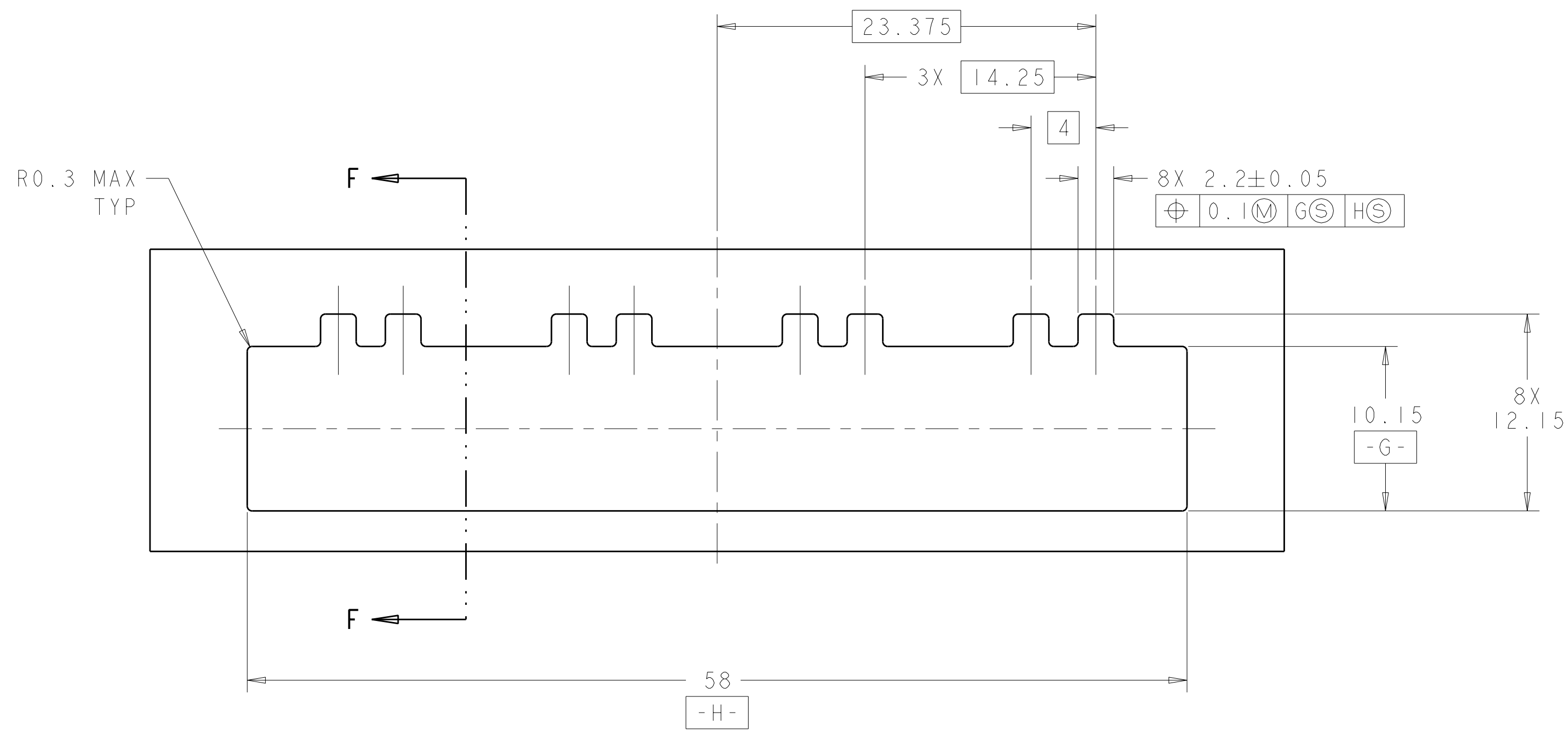


- 1 PADS AND VIAS CHASSIS GROUND.
- 2 DATUM AND BASIC DIMENSIONS ESTABLISHED BY CUSTOMER.
- 3 LIGHT PIPE KIT WHICH IS SEPARATE FROM THE CAGE ASSEMBLY. KIT TO BE ATTACHED AFTER SEATING OF 1658744-1 ON PCB.
- 4 LABEL ON CAGE WILL HAVE PART NUMBER 1658744-1.
- 5 REFERENCE STYLE 1 ON APPLICATION SPECIFICATION 114-13165 FOR ADDITIONAL INFORMATION ON CAGE ASSEMBLIES WITH LIGHT PIPES.
- 6 REFERENCE APPLICATION SPEC 114-13120, HOLE A, FOR RECOMMENDED DRILL HOLE DIAMETER AND PLATING THICKNESSES.
- 7 REFERENCE APPLICATION SPEC 114-13120, HOLE B, FOR RECOMMENDED DRILL HOLE DIAMETER AND PLATING THICKNESSES.
- 8 PATTERN REPEATS FOR EACH PORT. SPACING BETWEEN PORTS IS 14.25mm.
- 9 MINIMUM PC BOARD THICKNESS = 1.50mm.
- 10 COMPANY LOGO IN APPROXIMATE AREA SHOWN.
- 11 BOX WILL CONTAIN TRAYS OF CAGES AND TRAYS OF LIGHT PIPE ASSEMBLIES.
- 12 BOX WILL CONTAIN TRAYS OF CAGES AND TRAYS OF LIGHT PIPE ASSEMBLIES. ONE TRAY OF CAGE AND ONE TRAY OF LIGHT PIPE ASSEMBLIES WILL BE HELD BY A LARGE RUBBER BAND.

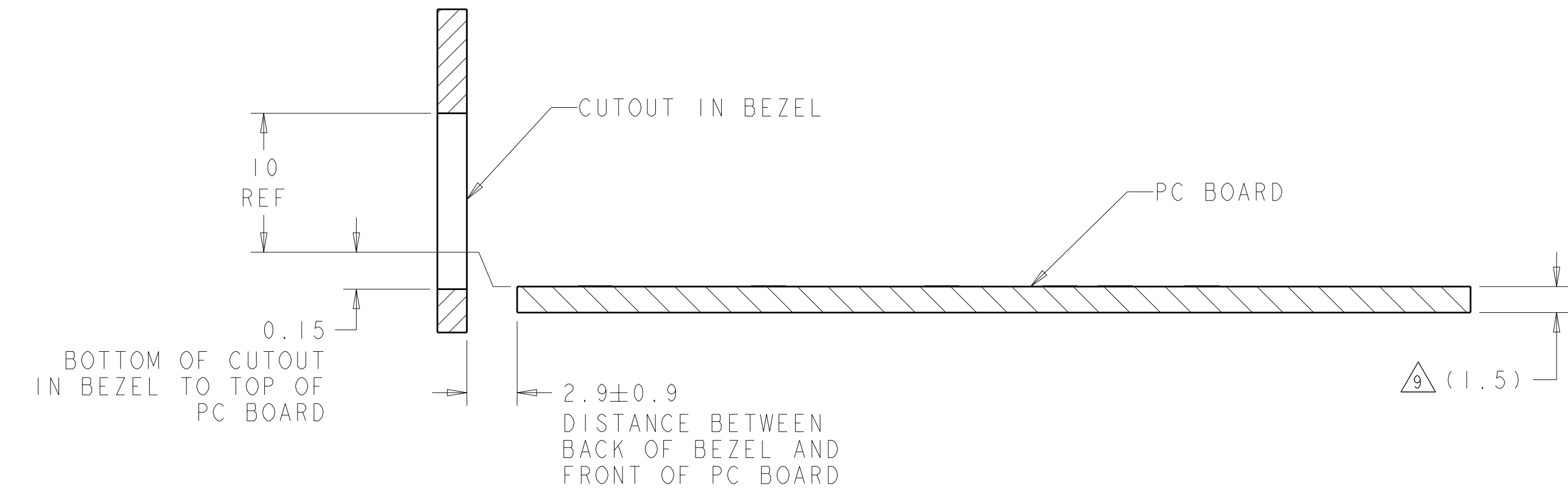
PACKAGE	DESCRIPTION	PART NO.
12	1X4 ASSEMBLY	1761008-2
11	1X4 ASSEMBLY	1761008-1

THIS DRAWING IS A CONTROLLED DOCUMENT.		APV M. PHILLIPS 02FEB2004	NAME
DIMENSIONS:	TOLERANCES UNLESS OTHERWISE SPECIFIED:	108-1950	SFP
mm	0 PLC ±0.1	114-13120	1X4 CAGE ASSEMBLY WITH LIGHT PIPE
	1 PLC ±0.1	SIZE	A100779
	2 PLC ±0.10	CAGE CODE	C=1761008
	3 PLC ±0.10	DRAWING NO	
	4 PLC ±0.100	RESTRICTED TO	
	5 PLC ±	SCALE	4:1
	ANGLES ±°	SHEET	1 OF 3
	FINISH ±°30'	REV	E1
MATERIAL		CUSTOMER DRAWING	

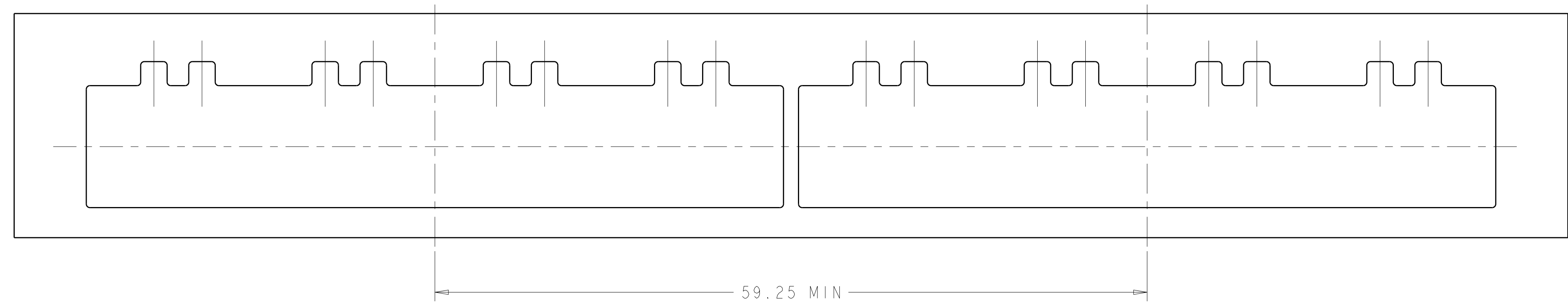
LOC	DIST	REV	DATE	BY	APPD
GP	00				
DESCRIPTION			DATE	DWN	APPD
SEE SHEET 1					



RECOMMENDED BEZEL CUTOUT



SECTION F-F
RECOMMENDED BEZEL CONFIGURATION



59.25 MIN

THIS DRAWING IS A CONTROLLED DOCUMENT.		DWN	W. VAN SCOY	02FEB2004	 TE Connectivity
DIMENSIONS:		CHK	M. PHILLIPS	02FEB2004	
mm		APVD	M. PHILLIPS	02FEB2004	
		TOLERANCES UNLESS OTHERWISE SPECIFIED:		NAME	
0 PLC ±0.1 1 PLC ±0.1 2 PLC ±0.10 3 PLC ±0.100 4 PLC ±* ANGLES ±*		PRODUCT SPEC 108-1950 APPLICATION SPEC 114-13120		SFP 1X4 CAGE ASSEMBLY WITH LIGHT PIPE	
MATERIAL		FINISH		SIZE	RESTRICTED TO
-		-		A100779C=1761008	-
CUSTOMER DRAWING				SCALE	4:1
				SHEET	2 OF 3
				REV	E

