



Chipsmall Limited consists of a professional team with an average of over 10 year of expertise in the distribution of electronic components. Based in Hongkong, we have already established firm and mutual-benefit business relationships with customers from,Europe,America and south Asia,supplying obsolete and hard-to-find components to meet their specific needs.

With the principle of “Quality Parts,Customers Priority,Honest Operation,and Considerate Service”,our business mainly focus on the distribution of electronic components. Line cards we deal with include Microchip,ALPS,ROHM,Xilinx,Pulse,ON,Everlight and Freescale. Main products comprise IC,Modules,Potentiometer,IC Socket,Relay,Connector.Our parts cover such applications as commercial,industrial, and automotives areas.

We are looking forward to setting up business relationship with you and hope to provide you with the best service and solution. Let us make a better world for our industry!



## Contact us

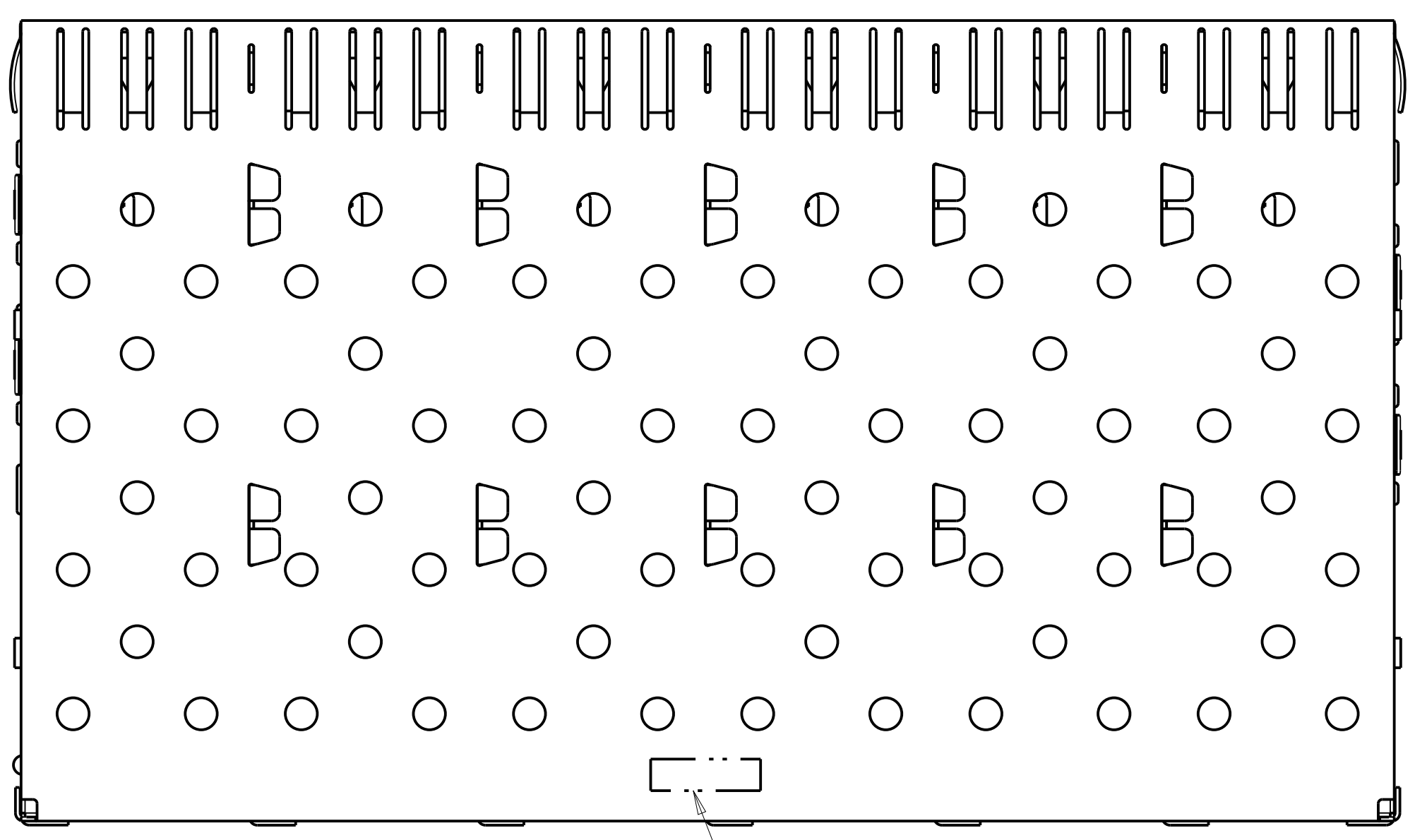
Tel: +86-755-8981 8866 Fax: +86-755-8427 6832

Email & Skype: info@chipsmall.com Web: www.chipsmall.com

Address: A1208, Overseas Decoration Building, #122 Zhenhua RD., Futian, Shenzhen, China

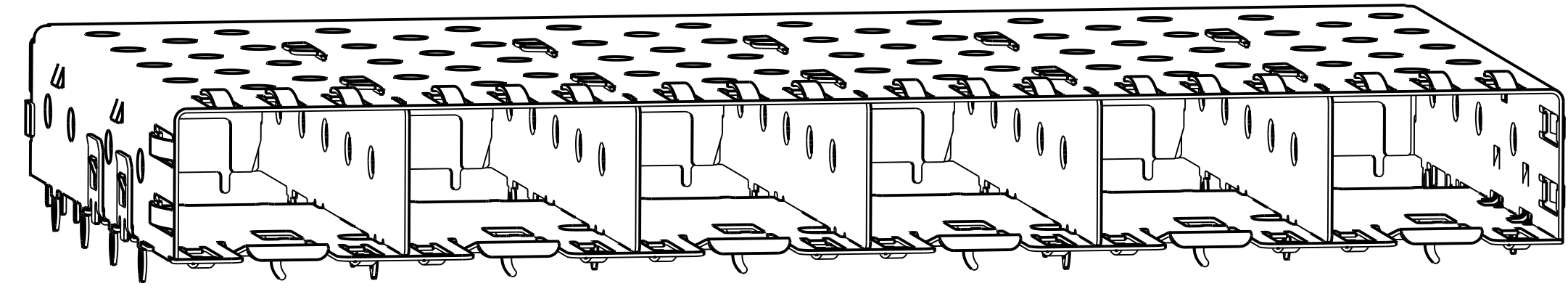


LOC	DIST	REVISIONS			
		REV	DATE	BY	CHK
GP	00	D1	13APR2011	RK	HMR
		E	20FEB2014	JW	SH
		E1	11JUL2014	JW	SH

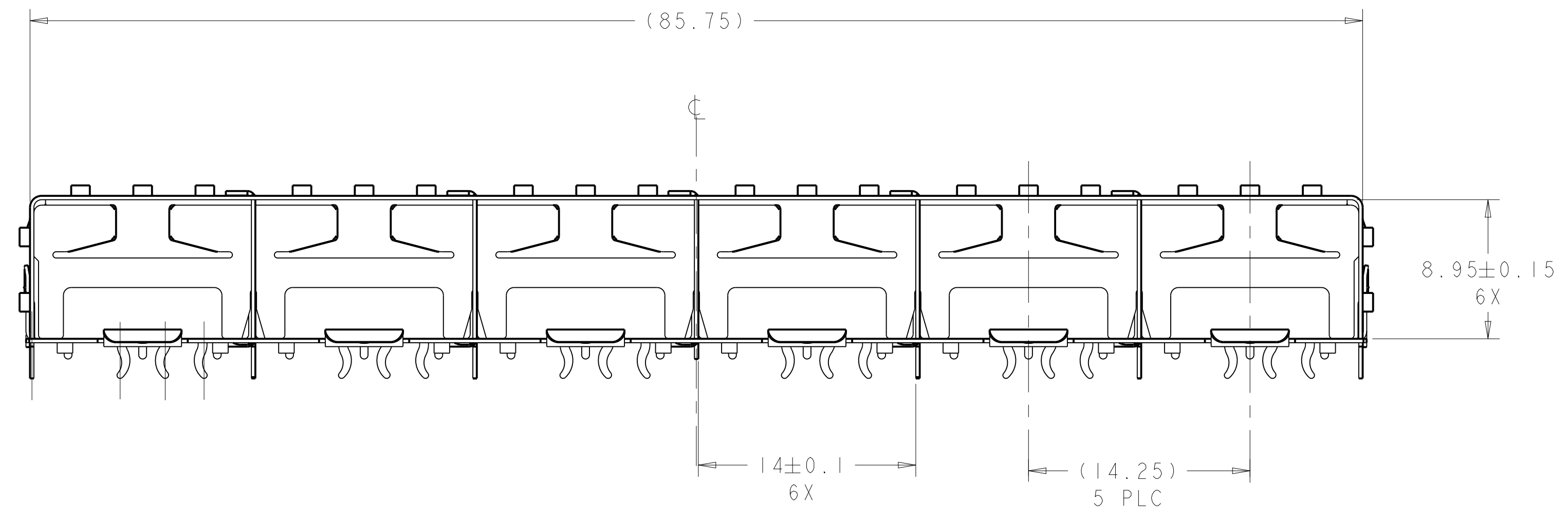


SCALE 3:1

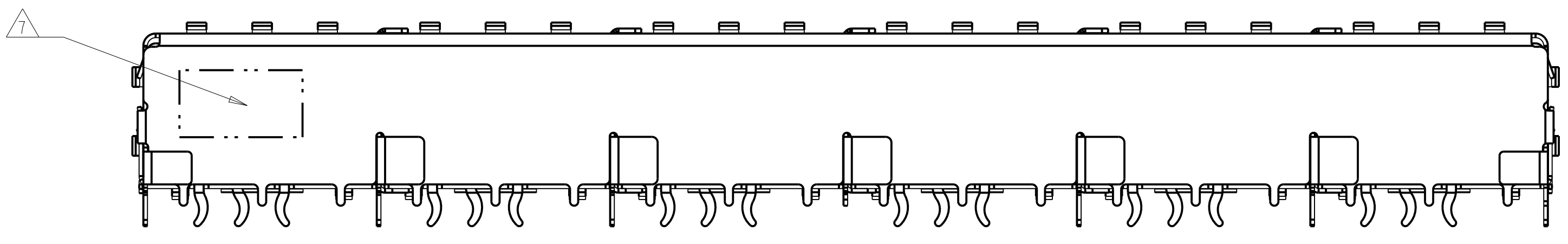
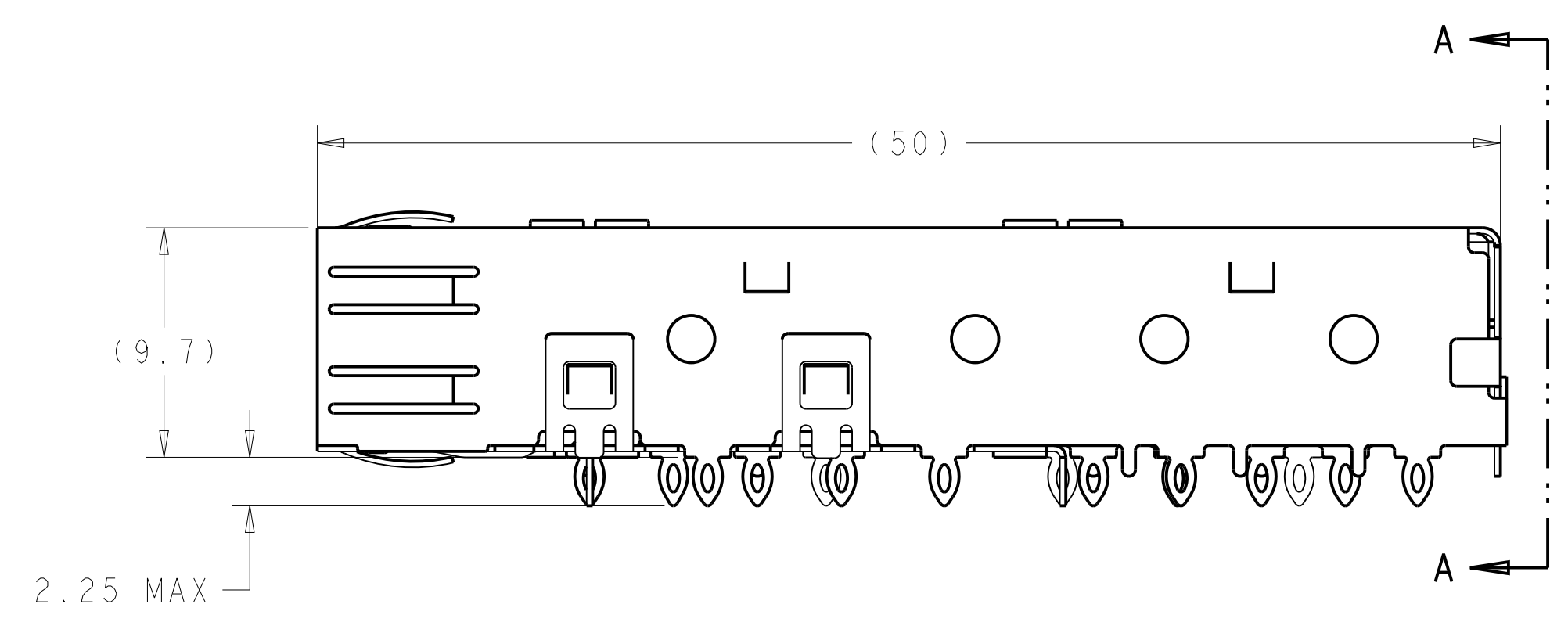
- 1 MATERIAL: COPPER ALLOY.
- 2 TIN PLATING PER ASTM B 545, 1.25µm MINIMUM THICKNESS, ALL OVER NICKEL FLASH PER QQ-N-290. NON-PLATED EDGES ARE PERMISSIBLE.
- 3 DATUM AND BASIC DIMENSIONS ESTABLISHED BY CUSTOMER.
- 4 PADS AND VIAS CHASSIS GROUND.
- 5 REFERENCE APPLICATION SPEC 114-13120, HOLE A, FOR RECOMMENDED DRILL HOLE DIAMETER AND PLATING THICKNESSES.
- 6 COMPANY LOGO IN APPROXIMATE AREA SHOWN
- 7 DATE CODE AND PART NUMBER IN APPROXIMATE AREA SHOWN
- 8 MATERIAL: NICKEL SILVER ALLOY(NO PLATING)



1761015-18-3  
SCALE 3:1



SECTION A-A

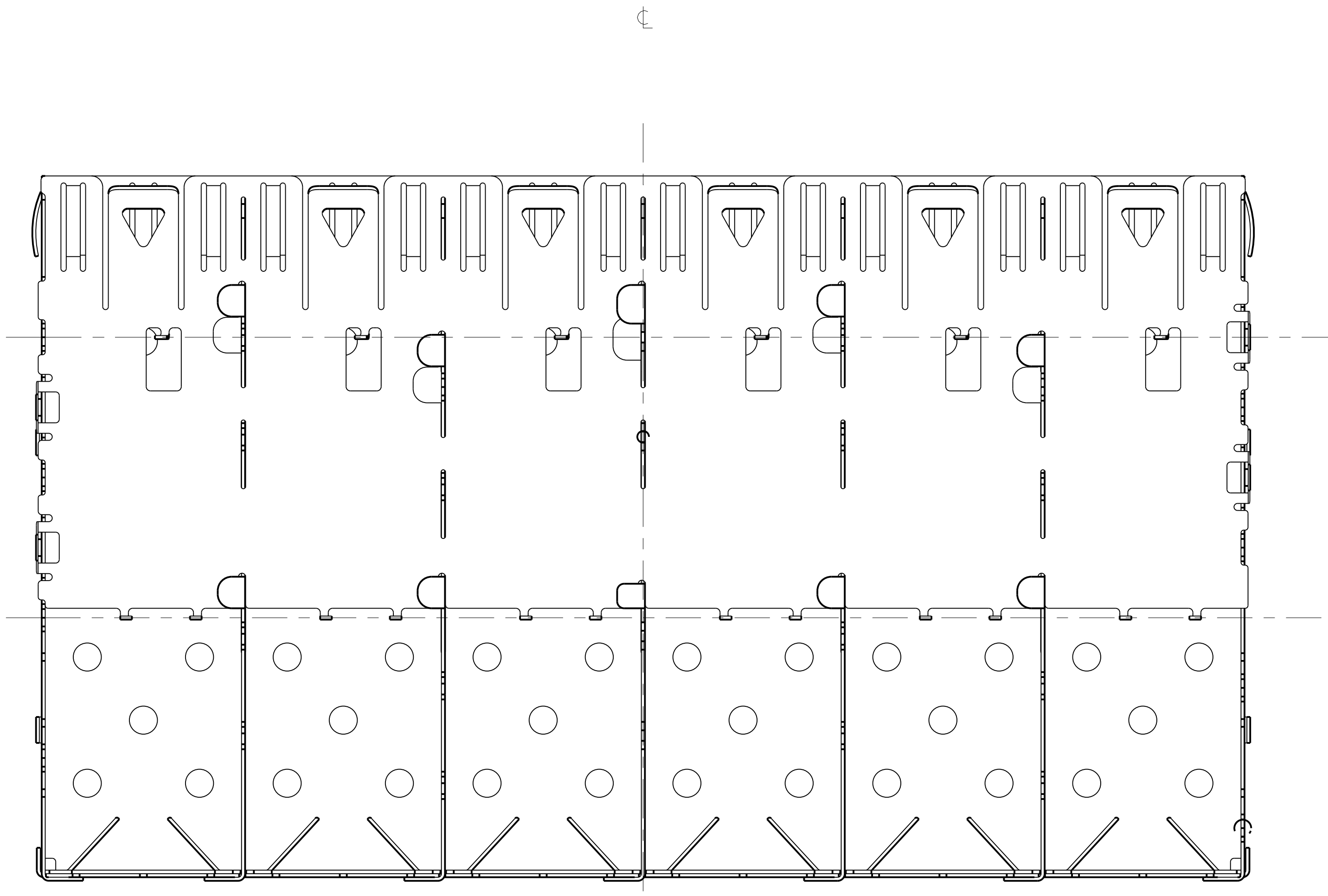


NO	FINISH	MATERIAL	DESCRIPTION	PART NO
1			1X6 CAGE ASSEMBLY	1761015-3
2			1X6 CAGE ASSEMBLY	1761015-1

THIS DRAWING IS A CONTROLLED DOCUMENT.		DWN: J. VAN SCIOK 11FEB2004 CHK: M. PHILLIPS 11FEB2004 APVD: M. PHILLIPS 11FEB2004		TE Connectivity ASSEMBLY, CAGE, PRESS FIT, 1X6, SFP	
DIMENSIONS: mm		TOLERANCES UNLESS OTHERWISE SPECIFIED:			
0 PLC ± 1 PLC ±0.10 2 PLC ± 3 PLC ± 4 PLC ± ANGLES ±2°		FINISH: 2		NAME: A100779 SIZE: A CAGE CODE: 1761015 DRAWING NO: 1761015-18-3 RESTRICTED TO: - SCALE: 4:1 SHEET 1 OF 4 REV: E1	

THIS DRAWING IS UNPUBLISHED. RELEASED FOR PUBLICATION 20  
COPYRIGHT 20 . ALL RIGHTS RESERVED.

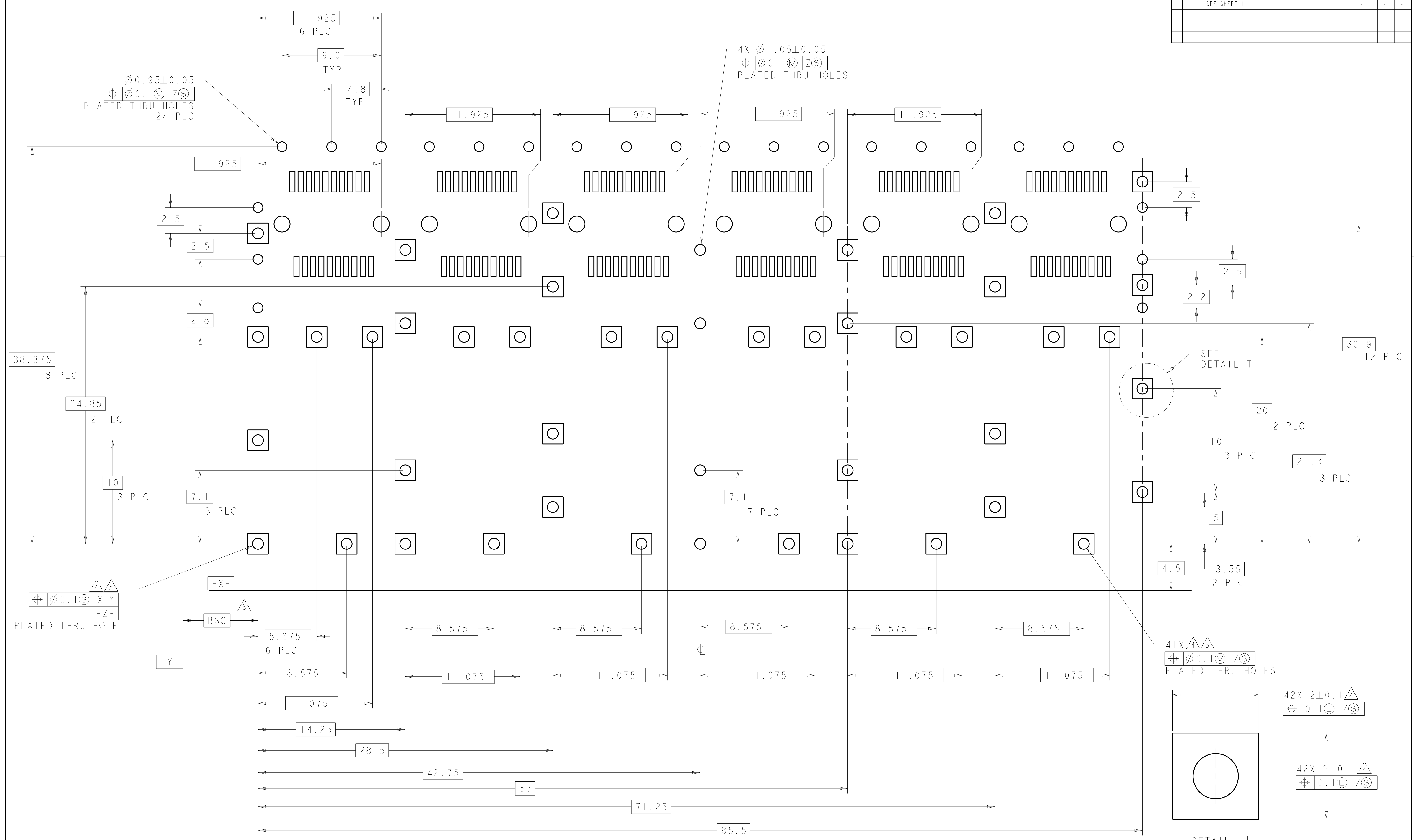
LOC	DIST	REVISIONS			
GP	00	REV	DATE	BY	APPV
-	-	SEE SHEET 1	-	-	-



THIS DRAWING IS A CONTROLLED DOCUMENT.		DWN W. VAN SCOY	11FEB2004	
DIMENSIONS:		CHK M. PHILLIPS	11FEB2004	
mm	TOLERANCES UNLESS OTHERWISE SPECIFIED:	APVD M. PHILLIPS	11FEB2004	NAME
0 PLC ±	1 PLC ±	PRODUCT SPEC		ASSEMBLY,
2 PLC ±0.10	3 PLC ±	108-1950		CAGE, PRESS FIT,
4 PLC ±	ANGLES ±	APPLICATION SPEC		1X6, SFP
MATERIAL	FINISH	114-13120		SIZE CAGE CODE DRAWING NO
		WEIGHT		A100779C=1761015
		CUSTOMER DRAWING		RESTRICTED TO
				SCALE 4:1 SHEET 2 OF 4 REV E1



LOC	DIST	REV	DATE	BY	APPV
GP	00				

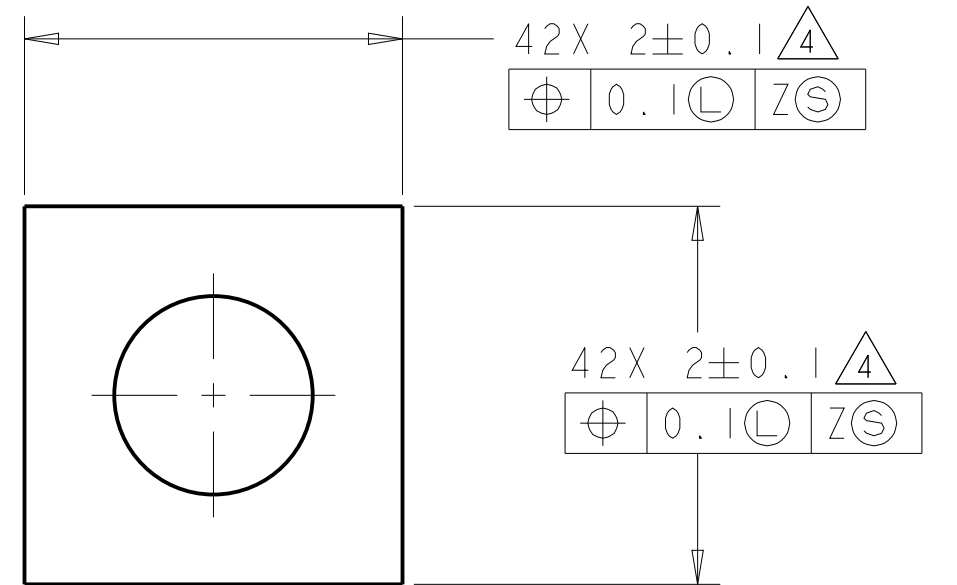


$\varnothing 0.95 \pm 0.05$   
 $\oplus \varnothing 0.1 \text{ (M) Z(S)}$   
 PLATED THRU HOLES  
 24 PLC

$4 \times \varnothing 1.05 \pm 0.05$   
 $\oplus \varnothing 0.1 \text{ (M) Z(S)}$   
 PLATED THRU HOLES

$\oplus \varnothing 0.1 \text{ (S) X Y}$   
 $-Z-$   
 PLATED THRU HOLE

$4 \times \varnothing 0.1 \text{ (M) Z(S)}$   
 PLATED THRU HOLES

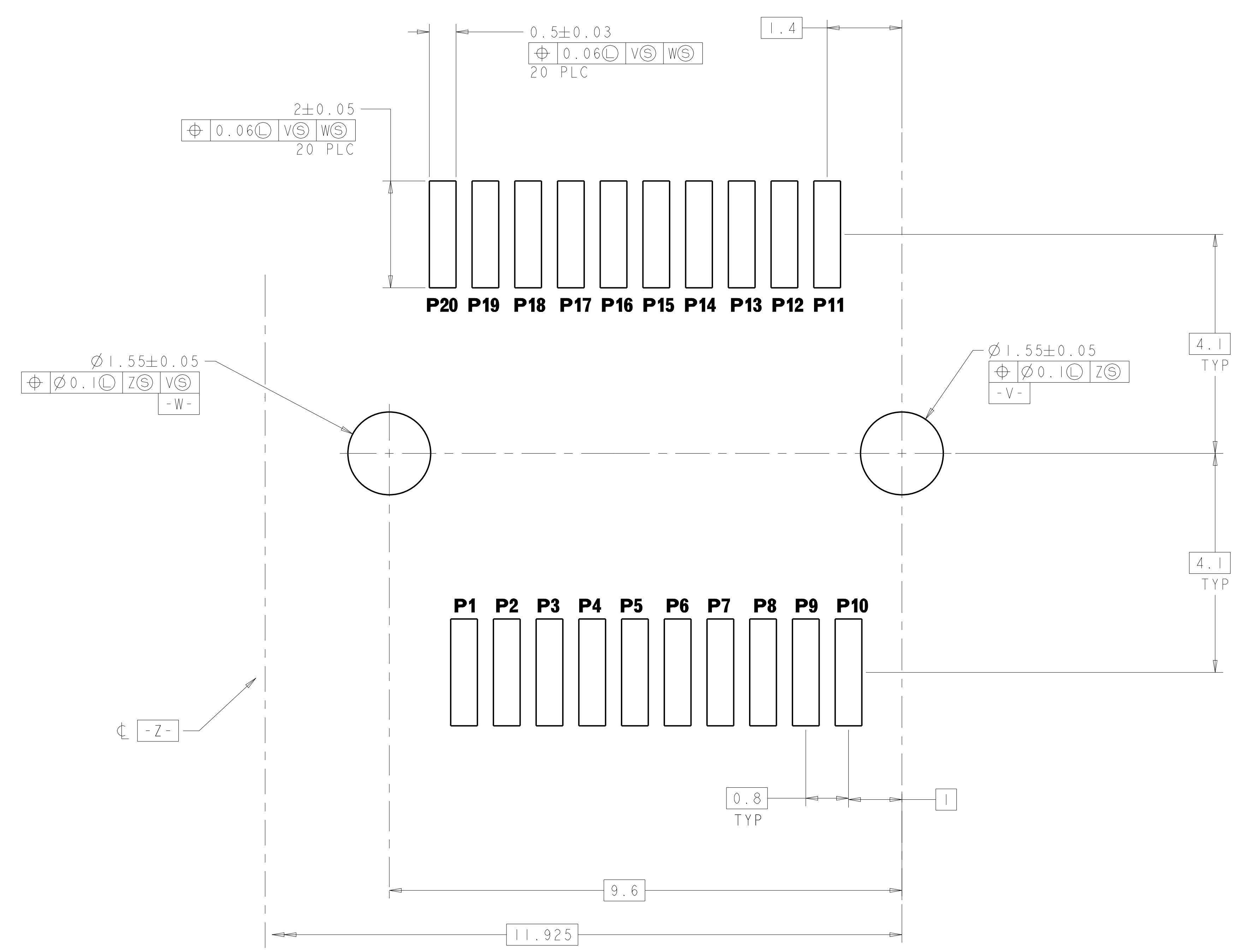


DETAIL T  
 SCALE 25:1

RECOMMENDED PCB CONFIGURATION  
 SCALE 5:1

THIS DRAWING IS A CONTROLLED DOCUMENT.		DWN: J. VAN SCOYK 1/FEB2004	TE Connectivity
DIMENSIONS: mm		CHK: M. PHILLIPS 1/FEB2004	
TOLERANCES UNLESS OTHERWISE SPECIFIED:		APVD: M. PHILLIPS 1/FEB2004	NAME: ASSEMBLY, CAGE, PRESS FIT, 1X6, SFP
0 PLC	±	PRODUCT SPEC	SIZE: CAGE CODE DRAWING NO
1 PLC	±0.10	APPLICATION SPEC	RESTRICTED TO
2 PLC	±	114-13120	A100779C=1761015
3 PLC	±	WEIGHT	SCALE 4:1 SHEET 3 OF 4 REV E1
4 PLC	±	CUSTOMER DRAWING	
ANGLES	±2°		
FINISH			

LOC	DIST	REVISIONS			
P	LTN	DESCRIPTION	DATE	DWN	APVD
-	-	SEE SHEET 1	-	-	-



DETAIL U  
SCALE 20:1

THIS DRAWING IS A CONTROLLED DOCUMENT.		DWN: W. VAN SCOY	11FEB2004	 TE Connectivity
DIMENSIONS: mm		CHK: M. PHILLIPS	11FEB2004	
TOLERANCES UNLESS OTHERWISE SPECIFIED: 0 PLC $\pm$ 1 PLC $\pm 0.10$ 2 PLC $\pm$ 3 PLC $\pm$ 4 PLC $\pm$ ANGLES $\pm 2^\circ$		APVD: M. PHILLIPS	11FEB2004	NAME: ASSEMBLY, CAGE, PRESS FIT, 1X6, SFP
MATERIAL: FINISH:		PRODUCT SPEC: 108-1950	APPLICATION SPEC: 114-13120	RESTRICTED TO:
WEIGHT:		SIZE: A100779	CAGE CODE: C=1761015	SCALE: 4:1
CUSTOMER DRAWING		SHEET 4 OF 4		REV: E