



Chipsmall Limited consists of a professional team with an average of over 10 year of expertise in the distribution of electronic components. Based in Hongkong, we have already established firm and mutual-benefit business relationships with customers from,Europe,America and south Asia,supplying obsolete and hard-to-find components to meet their specific needs.

With the principle of "Quality Parts,Customers Priority,Honest Operation,and Considerate Service",our business mainly focus on the distribution of electronic components. Line cards we deal with include Microchip,ALPS,ROHM,Xilinx,Pulse,ON,Everlight and Freescale. Main products comprise IC,Modules,Potentiometer,IC Socket,Relay,Connector.Our parts cover such applications as commercial,industrial, and automotives areas.

We are looking forward to setting up business relationship with you and hope to provide you with the best service and solution. Let us make a better world for our industry!



## Contact us

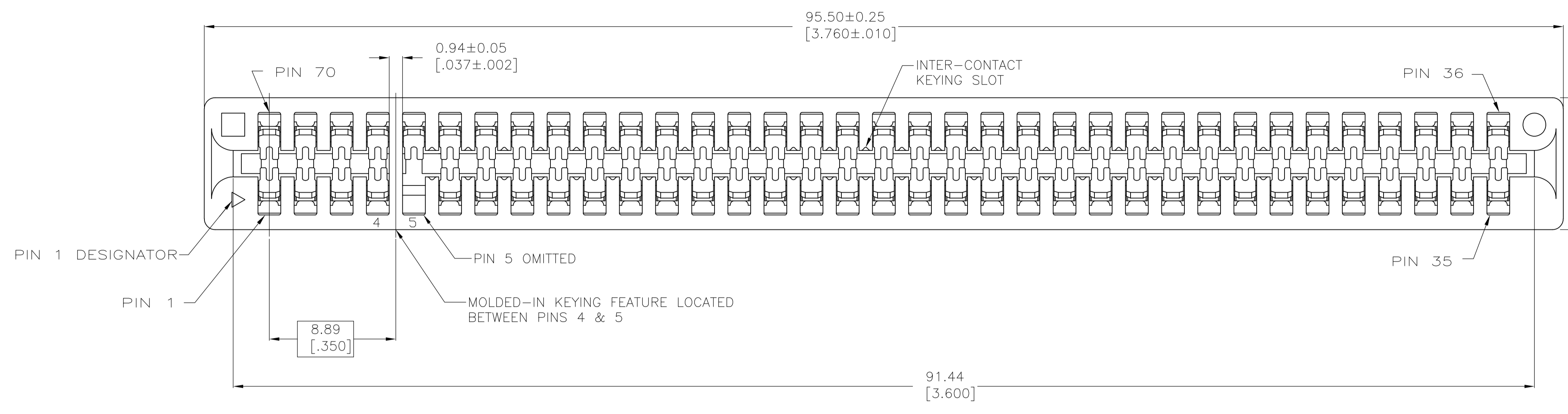
Tel: +86-755-8981 8866 Fax: +86-755-8427 6832

Email & Skype: info@chipsmall.com Web: www.chipsmall.com

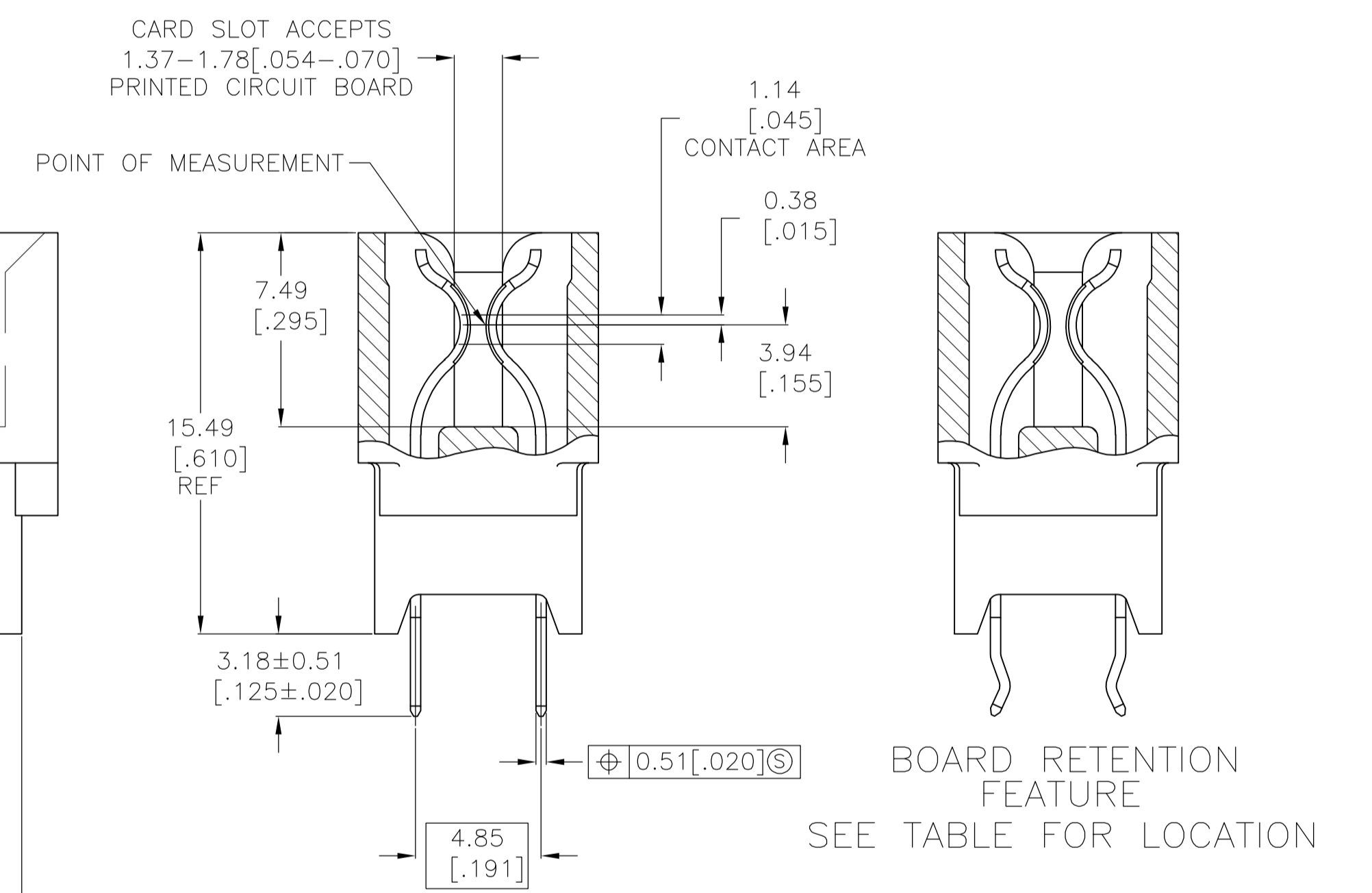
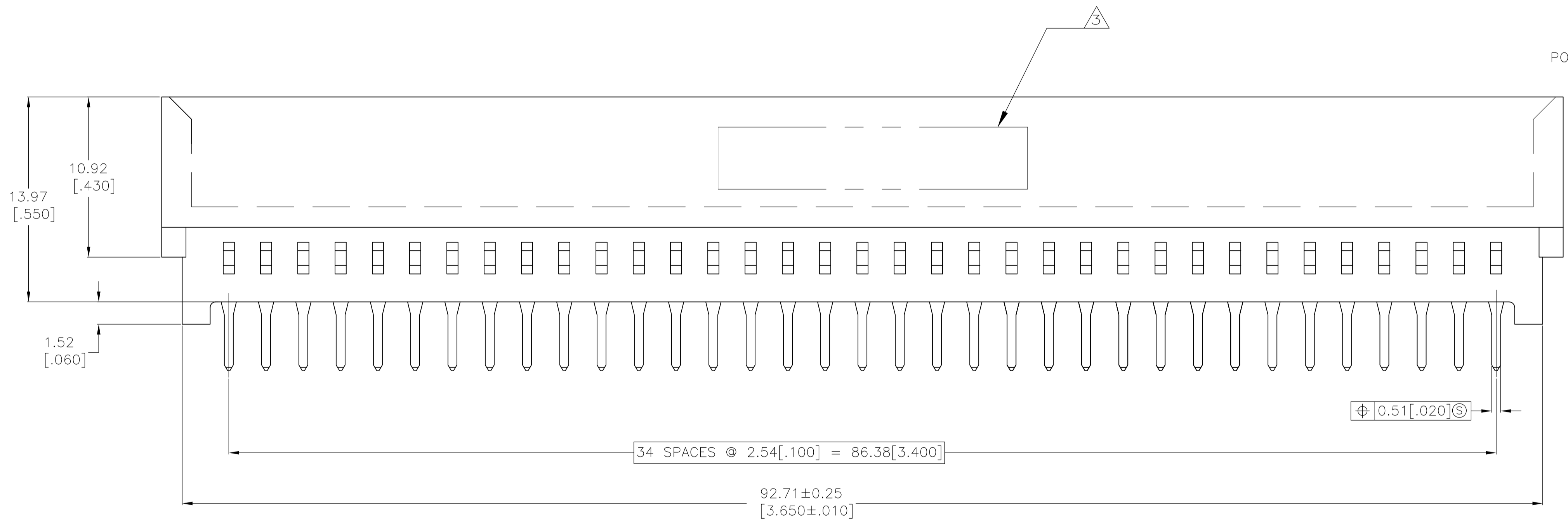
Address: A1208, Overseas Decoration Building, #122 Zhenhua RD., Futian, Shenzhen, China



LOC		DIST		REVISIONS			
P	LTR	DESCRIPTION	DATE	DN	APVD	RG	EH
C1	REV PER	ECO-09-017748	30JULY09	RG	EH		

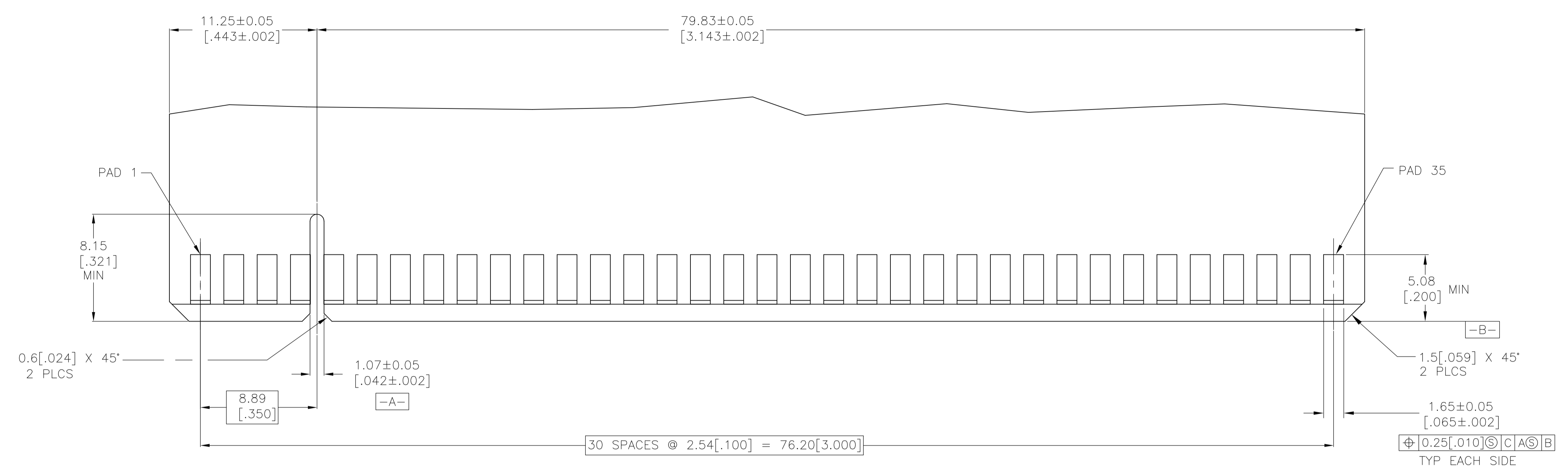


- MATERIAL:  
HOUSING: GLASS FILLED POLYESTER; COLOR: BLACK.  
CONTACT: HIGH CONDUCTIVITY COPPER ALLOY
- FINISH:  
0.00076[.000030] GOLD PLATE IN CONTACT AREA,  
0.00254[.000100] MIN MATTE TIN ON SOLDER POSTS, ALL  
OVER 0.00127[.000050] MIN NICKEL
- AMP LOGO, TE PART NUMBER, DATE CODE AND CSA LOGO INK  
STAMPED WHITE (HOT STAMPED OR LAZER PRINTED) IN THE APPROXIMATE  
AREA SHOWN, EITHER SIDE PERMISSABLE, WHEN HOUSING SIZE PERMITS
- DATUMS AND BASIC DIMENSIONS ESTABLISHED BY CUSTOMER

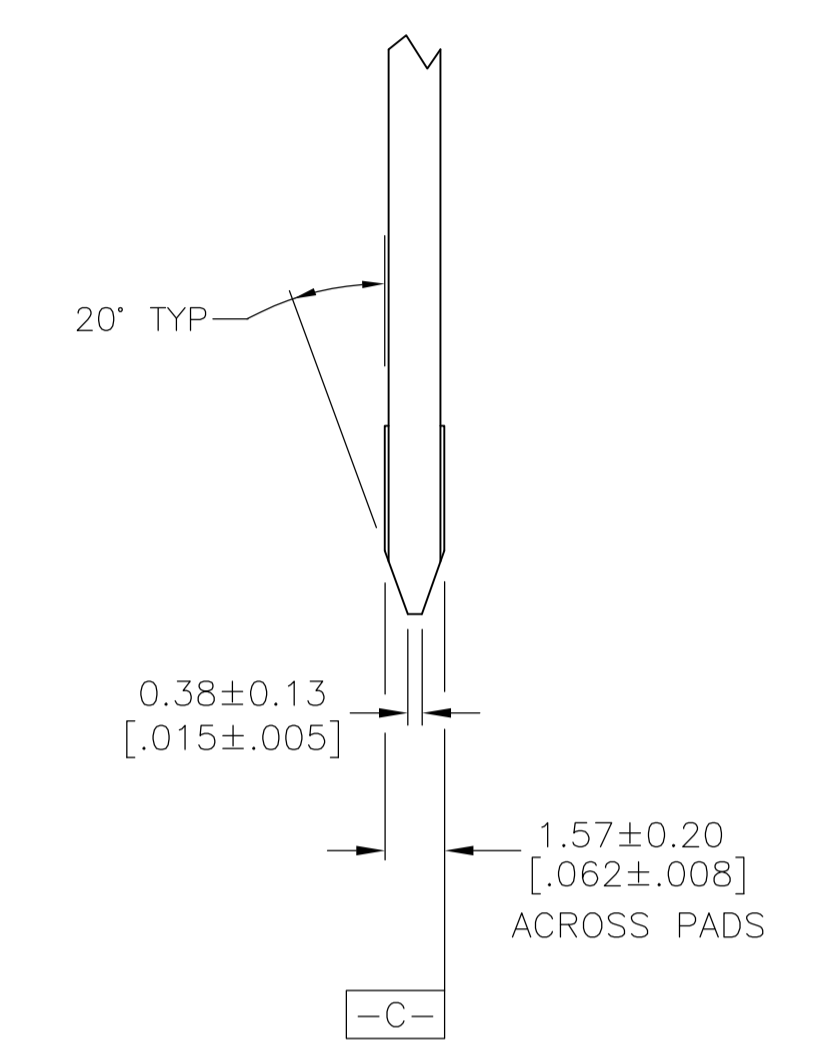


2, 3, 33, 34, 37, 38, 68, 69	1761446-1
RETENTION FEATURE LOCATION	PART NUMBER

THIS DRAWING IS A CONTROLLED DOCUMENT.		DNW AWF/L.A.MAYER 03APR2008	Tyco Electronics Corporation Harrisburg, Pa 17105-3608	
DIMENSIONS: mm		CHK A.W.FRANTUM 03APR2008	NAME CONNECTOR ASSEMBLY, STANDARD EDGE II, HIGH CURRENT, DUAL POSITION, 2.54 [1.00] CENTERLINE	
TOLERANCES UNLESS OTHERWISE SPECIFIED:		APVD S.L.FLICKINGER 03APR2008	PRODUCT SPEC 108-9039	
0 PLC ± -		APPLICATION SPEC 114-13018		
1 PLC ± -		SIZE A1		
2 PLC ± 0.13 [0.005]		CAGE CODE 00779		
3 PLC ± -		DRAWING NO 1761446		
4 PLC ± -		RESTRICTED TO CUSTOMER DRAWING		
ANGLES ± °		SCALE 5:1		
MATERIAL SEE NOTE 1		SHEET 1 OF 2		
FINISH SEE NOTE 2		REV C1		



RECOMMENDED MATING BOARD EDGE CONFIGURATION



RECOMMENDED PC BOARD HOLE LAYOUT

THIS DRAWING IS A CONTROLLED DOCUMENT.		DIN AWF/L.A.MAYER 03APR2008		Tyco Electronics Corporation	
DIMENSIONS: mm		CHK A.W.FRANTUM 03APR2008		Harrisburg, Pa 17105-3608	
TOLERANCES UNLESS OTHERWISE SPECIFIED:		APVD S.L.FLICKINGER 03APR2008		NAME	
0 PLC ± -		PRODUCT SPEC		CONNECTOR ASSEMBLY,	
1 PLC ± -		APPLICATION SPEC		STANDARD EDGE II, HIGH CURRENT,	
2 PLC ± 0.13 [.005]		SIZE CAGE CODE DRAWING NO		DUAL POSITION, 2.54 [.100] CENTERLINE	
3 PLC ± -		114-13018		RESTRICTED TO	
4 PLC ± -		WEIGHT		A1 00779 C=1761446	
ANGLES ± °		CUSTOMER DRAWING		SCALE 5:1 SHEET 2 OF 2 REV C1	
MATERIAL SEE NOTE 1		FINISH SEE NOTE 2			