



Chipsmall Limited consists of a professional team with an average of over 10 year of expertise in the distribution of electronic components. Based in Hongkong, we have already established firm and mutual-benefit business relationships with customers from,Europe,America and south Asia,supplying obsolete and hard-to-find components to meet their specific needs.

With the principle of “Quality Parts,Customers Priority,Honest Operation,and Considerate Service”,our business mainly focus on the distribution of electronic components. Line cards we deal with include Microchip,ALPS,ROHM,Xilinx,Pulse,ON,Everlight and Freescale. Main products comprise IC,Modules,Potentiometer,IC Socket,Relay,Connector.Our parts cover such applications as commercial,industrial, and automotives areas.

We are looking forward to setting up business relationship with you and hope to provide you with the best service and solution. Let us make a better world for our industry!



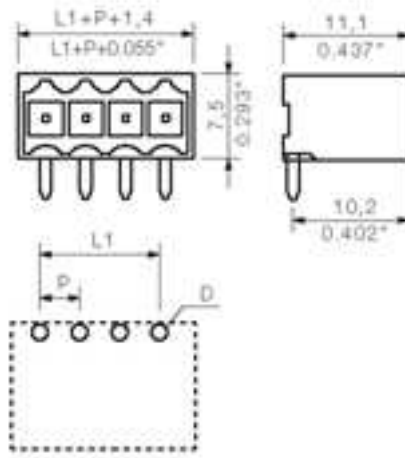
Contact us

Tel: +86-755-8981 8866 Fax: +86-755-8427 6832

Email & Skype: info@chipsmall.com Web: www.chipsmall.com

Address: A1208, Overseas Decoration Building, #122 Zhenhua RD., Futian, Shenzhen, China





General ordering data

Order No.	1761622001
Part designation	SL-SMT3.5/10/90G 1.5SN
Version	PCB plug-in connector, Male connectors, Reflow solder connection, Pitch: 3.50 mm, No. of poles: 10, 90°, Box
EAN	4032248132218
Qty.	50 pc(s).

System parameters

Fitted to PCB	Reflow solder connection
Outgoing elbow	90°
Pitch	3.5 mm
Pitch in inch	0.138 inch
No. of poles	10
Solder pin length	1.5 mm
Can be coded	Yes
No. of rows	1
No. of solder pins per pole	1
Dia. of fitting hole	1.4 mm
Fitting hole tolerance	+ 0.1 mm
L1 in mm	31.5 mm
L1 in inch	1.24 inch
Insulation resistance	1 MΩ

System parameters

Electric shock protection to DIN VDE 0470	IP 10
Electric shock protection to DIN VDE 0470	Safe from back-of-hand touch

Material data

Insulating material	LCP GF
Colour	black
colour chart	Similar to RAL 9011
Insulating material group	IIIa
Flammability class UL 94	V-0
CTI	>= 175
Temperature of glow-wire test	960 °C
Duration of glow-wire test	30 S
Contact base material	CuSn
Contact surface	tinned
Constant operating temp., min.	-25 °C
Constant operating temp., max.	100 °C
Storage temperature, min.	-25 °C
Storage temperature, max.	55 °C
Max. relative humidity during storage	80 %

DIN IEC rating data

Rated current, min. No. pins (Tu=20°C)	15 A
Rated current, max. No. pins (Tu=20°C)	12 A
Rated current, min. No. pins (Tu=40°C)	13 A
Rated current, max. No. pins (Tu=40°C)	10 A
Rated voltage for overvoltage class/pollution severity III/3	160 V
Rated impulse withstand voltage for overvoltage class/pollution severity III/3	2.5 kV
Rated voltage for overvoltage class/pollution severity III/2	160 V
Rated impulse withstand voltage for overvoltage class/pollution severity III/2	2.5 kV
Rated voltage for overvoltage class/pollution severity II/2	320 V
Rated impulse withstand voltage for overvoltage class/pollution severity II/2	2.5 kV
Short-time withstand current resistance	3 x 1s with 100 A

CSA rating data

Rated voltage (Use group D)	300 V
Rated current (Use group D)	10 A

UL 1059 rating data

Rated voltage (Use group D)	300 V
Rated current (Use group D)	10 A

Approvals

Approvals institutes



Downloads

CAD Library (P-CAD Format - Standard) SL-SMT.LIB

Classifications

ETIM 2.0	NK
ETIM 3.0	EC001284
eClass 4.1	27-26-07-01
eClass 5.0	27-26-07-01
eClass 5.1	27-26-07-04

Similar products

Order No.	Part designation	Version
1761552001	SL-SMT3.5/3/90G 1.5SN	PCB plug-in connector, Male connectors, Reflow solder connection, Pitch: 3.50 mm, No. of poles: 3, 90°, Box
1841640000	SL-SMT3.5/3/90G 3.2SN SW BOX	PCB plug-in connector, Male connectors, Reflow solder connection, Pitch: 3.50 mm, No. of poles: 3, 90°, Box
1761562001	SL-SMT3.5/4/90G 1.5SN	PCB plug-in connector, Male connectors, Reflow solder connection, Pitch: 3.50 mm, No. of poles: 4, 90°, Box
1841650000	SL-SMT3.5/4/90G 3.2SN SW BOX	PCB plug-in connector, Male connectors, Reflow solder connection, Pitch: 3.50 mm, No. of poles: 4, 90°, Box
1761572001	SL-SMT3.5/5/90G 1.5SN	PCB plug-in connector, Male connectors, Reflow solder connection, Pitch: 3.50 mm, No. of poles: 5, 90°, Box
1841660000	SL-SMT3.5/5/90G 3.2SN SW BOX	PCB plug-in connector, Male connectors, Reflow solder connection, Pitch: 3.50 mm, No. of poles: 5, 90°, Box
1761582001	SL-SMT3.5/6/90G 1.5SN	PCB plug-in connector, Male connectors, Reflow solder connection, Pitch: 3.50 mm, No. of poles: 6, 90°, Box
1841670000	SL-SMT3.5/6/90G 3.2SN SW BOX	PCB plug-in connector, Male connectors, Reflow solder connection, Pitch: 3.50 mm, No. of poles: 6, 90°, Box
1761592001	SL-SMT3.5/7/90G 1.5SN	PCB plug-in connector, Male connectors, Reflow solder connection, Pitch: 3.50 mm, No. of poles: 7, 90°, Box
1841680000	SL-SMT3.5/7/90G 3.2SN SW BOX	PCB plug-in connector, Male connectors, Reflow solder connection, Pitch: 3.50 mm, No. of poles: 7, 90°, Box

1761602001	SL-SMT3.5/8/90G 1.5SN	PCB plug-in connector, Male connectors, Reflow solder connection, Pitch: 3.50 mm, No. of poles: 8, 90°, Box
1841690000	SL-SMT3.5/8/90G 3.2SN SW BOX	PCB plug-in connector, Male connectors, Reflow solder connection, Pitch: 3.50 mm, No. of poles: 8, 90°, Box
1761612001	SL-SMT3.5/9/90G 1.5SN	PCB plug-in connector, Male connectors, Reflow solder connection, Pitch: 3.50 mm, No. of poles: 9, 90°, Box
1841700000	SL-SMT3.5/9/90G 3.2SN SW BOX	PCB plug-in connector, Male connectors, Reflow solder connection, Pitch: 3.50 mm, No. of poles: 9, 90°, Box
1841710000	SL-SMT3.5/10/90G 3.2SN SW BOX	PCB plug-in connector, Male connectors, Reflow solder connection, Pitch: 3.50 mm, No. of poles: 10, 90°, Box
1761632001	SL-SMT3.5/11/90G 1.5SN	PCB plug-in connector, Male connectors, Reflow solder connection, Pitch: 3.50 mm, No. of poles: 11, 90°, Box
1841720000	SL-SMT3.5/11/90G 3.2SN SW BOX	PCB plug-in connector, Male connectors, Reflow solder connection, Pitch: 3.50 mm, No. of poles: 11, 90°, Box
1761642001	SL-SMT3.5/12/90G 1.5SN	PCB plug-in connector, Male connectors, Reflow solder connection, Pitch: 3.50 mm, No. of poles: 12, 90°, Box
1841730000	SL-SMT3.5/12/90G 3.2SN SW BOX	PCB plug-in connector, Male connectors, Reflow solder connection, Pitch: 3.50 mm, No. of poles: 12, 90°, Box
1761652001	SL-SMT3.5/13/90G 1.5SN	PCB plug-in connector, Male connectors, Reflow solder connection, Pitch: 3.50 mm, No. of poles: 13, 90°, Box
1841740000	SL-SMT3.5/13/90G 3.2SN SW BOX	PCB plug-in connector, Male connectors, Reflow solder connection, Pitch: 3.50 mm, No. of poles: 13, 90°, Box
1761662001	SL-SMT3.5/14/90G 1.5SN	PCB plug-in connector, Male connectors, Reflow solder connection, Pitch: 3.50 mm, No. of poles: 14, 90°, Box
1841750000	SL-SMT3.5/14/90G 3.2SN SW BOX	PCB plug-in connector, Male connectors, Reflow solder connection, Pitch: 3.50 mm, No. of poles: 14, 90°, Box
1761672001	SL-SMT3.5/15/90G 1.5SN	PCB plug-in connector, Male connectors, Reflow solder connection, Pitch: 3.50 mm, No. of poles: 15, 90°, Box
1841760000	SL-SMT3.5/15/90G 3.2SN SW BOX	PCB plug-in connector, Male connectors, Reflow solder connection, Pitch: 3.50 mm, No. of poles: 15, 90°, Box
1761682001	SL-SMT3.5/16/90G 1.5SN	PCB plug-in connector, Male connectors, Reflow solder connection, Pitch: 3.50 mm, No. of poles: 16, 90°, Box
1841770000	SL-SMT3.5/16/90G 3.2SN SW BOX	PCB plug-in connector, Male connectors, Reflow solder connection, Pitch: 3.50 mm, No. of poles: 16, 90°, Box
1761692001	SL-SMT3.5/17/90G 1.5SN	PCB plug-in connector, Male connectors, Reflow solder connection, Pitch: 3.50 mm, No. of poles: 17, 90°, Box
1841780000	SL-SMT3.5/17/90G 3.2SN SW BOX	PCB plug-in connector, Male connectors, Reflow solder connection, Pitch: 3.50 mm, No. of poles: 17, 90°, Box
1761702001	SL-SMT3.5/18/90G 1.5SN	PCB plug-in connector, Male connectors, Reflow solder connection, Pitch: 3.50 mm, No. of poles: 18, 90°, Box
1841790000	SL-SMT3.5/18/90G 3.2SN SW BOX	PCB plug-in connector, Male connectors, Reflow solder connection, Pitch: 3.50 mm, No. of poles: 18, 90°, Box
1761712001	SL-SMT3.5/19/90G 1.5SN	PCB plug-in connector, Male connectors, Reflow solder connection, Pitch: 3.50 mm, No. of poles: 19, 90°, Box
1841800000	SL-SMT3.5/19/90G 3.2SN SW BOX	PCB plug-in connector, Male connectors, Reflow solder connection, Pitch: 3.50 mm, No. of poles: 19, 90°, Box
1761542001	SL-SMT3.5/2/90G 1.5SN	PCB plug-in connector, Male connectors, Reflow solder connection, Pitch: 3.50 mm, No. of poles: 2, 90°, Box
1841630000	SL-SMT3.5/2/90G 3.2SN SW BOX	PCB plug-in connector, Male connectors, Reflow solder connection, Pitch: 3.50 mm, No. of poles: 2, 90°, Box
1761722001	SL-SMT3.5/20/90G 1.5SN	PCB plug-in connector, Male connectors, Reflow solder connection, Pitch: 3.50 mm, No. of poles: 20, 90°, Box

1841810000	SL-SMT3.5/20/90G 3.2SN SW BOX	PCB plug-in connector, Male connectors, Reflow solder connection, Pitch: 3.50 mm, No. of poles: 20, 90°, Box
1761732001	SL-SMT3.5/21/90G 1.5SN	PCB plug-in connector, Male connectors, Reflow solder connection, Pitch: 3.50 mm, No. of poles: 21, 90°, Box
1841820000	SL-SMT3.5/21/90G 3.2SN SW BOX	PCB plug-in connector, Male connectors, Reflow solder connection, Pitch: 3.50 mm, No. of poles: 21, 90°, Box
1761742001	SL-SMT3.5/22/90G 1.5SN	PCB plug-in connector, Male connectors, Reflow solder connection, Pitch: 3.50 mm, No. of poles: 22, 90°, Box
1841830000	SL-SMT3.5/22/90G 3.2SN SW BOX	PCB plug-in connector, Male connectors, Reflow solder connection, Pitch: 3.50 mm, No. of poles: 22, 90°, Box
1761752001	SL-SMT3.5/23/90G 1.5SN	PCB plug-in connector, Male connectors, Reflow solder connection, Pitch: 3.50 mm, No. of poles: 23, 90°, Box
1841840000	SL-SMT3.5/23/90G 3.2SN SW BOX	PCB plug-in connector, Male connectors, Reflow solder connection, Pitch: 3.50 mm, No. of poles: 23, 90°, Box
1761762001	SL-SMT3.5/24/90G 1.5SN	PCB plug-in connector, Male connectors, Reflow solder connection, Pitch: 3.50 mm, No. of poles: 24, 90°, Box
1841850000	SL-SMT3.5/24/90G 3.2SN SW BOX	PCB plug-in connector, Male connectors, Reflow solder connection, Pitch: 3.50 mm, No. of poles: 24, 90°, Box