



Chipsmall Limited consists of a professional team with an average of over 10 year of expertise in the distribution of electronic components. Based in Hongkong, we have already established firm and mutual-benefit business relationships with customers from,Europe,America and south Asia,supplying obsolete and hard-to-find components to meet their specific needs.

With the principle of “Quality Parts,Customers Priority,Honest Operation,and Considerate Service”,our business mainly focus on the distribution of electronic components. Line cards we deal with include Microchip,ALPS,ROHM,Xilinx,Pulse,ON,Everlight and Freescale. Main products comprise IC,Modules,Potentiometer,IC Socket,Relay,Connector.Our parts cover such applications as commercial,industrial, and automotives areas.

We are looking forward to setting up business relationship with you and hope to provide you with the best service and solution. Let us make a better world for our industry!



Contact us

Tel: +86-755-8981 8866 Fax: +86-755-8427 6832

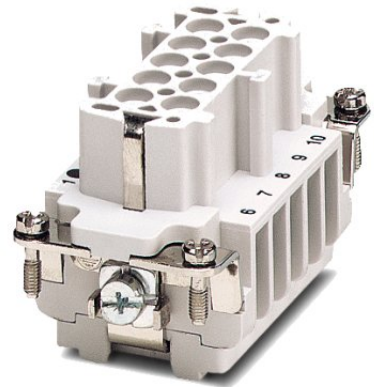
Email & Skype: info@chipsmall.com Web: www.chipsmall.com

Address: A1208, Overseas Decoration Building, #122 Zhenhua RD., Futian, Shenzhen, China




HC-B 10-EBUS

Order No.: 1771202

<http://eshop.phoenixcontact.de/phoenix/treeViewClick.do?UID=1771202>

HEAVYCON female insert, B10 series, 10-pos., screw connection

Commercial data

| | |
|--------------------------|---|
| GTIN (EAN) |  4 017918 035945 |
| sales group | D000 |
| Pack | 10 pcs. |
| Customs tariff | 85366990 |
| Catalog page information | Page 345 (PC-2007) |

Product notesWEEE/RoHS-compliant since:
01/31/2006

<http://www.download.phoenixcontact.com>
Please note that the data given here has been taken from the online catalog. For comprehensive information and data, please refer to the user documentation. The General Terms and Conditions of Use apply to Internet downloads.

Technical data**General data**

| | |
|---------------------------------|--|
| Note | For housing HC-B10 |
| Connection method | Screw connection |
| Tightening torque | 0.5 Nm |
| Ambient temperature (operation) | -40 °C ... 125 °C (including heating up of contacts) |
| Pollution degree | 3 |

| | |
|---|--|
| Surge voltage category | III |
| Constructional and testing regulations | DIN VDE 0627/86 |
| | DIN VDE 0110/02.79 |
| | DIN VDE 0110-1/04.97 |
| | IEC 60664-1, DIN IEC 60512 |
| | IEC 60352 |
| Number of positions | 10 |
| Insertion/withdrawal cycles | ≥ 500 |
| Design | B10 |
| Connection in acc. with standard | IEC / EN |
| Conductor cross-section | 0.5 mm ² ... 2.5 mm ² |
| Connection cross-section AWG | 20 ... 14 |
| Stripping length of the individual wire | 7 mm |
| Assembly instructions | Connectors may be operated only when there is no load/voltage. |
| Connection | For housings of type B10. |

Material data

| | |
|------------------------------------|--------------|
| Inflammability class acc. to UL 94 | V0 |
| Contact material | Copper alloy |
| Contact surface material | Ag |
| Contact carrier material | PA |

Electrical characteristics

| | |
|-----------------------|-------|
| Rated voltage (III/3) | 500 V |
| Rated surge voltage | 6 kV |
| Rated current | 16 A |

Certificates / Approvals



Certification

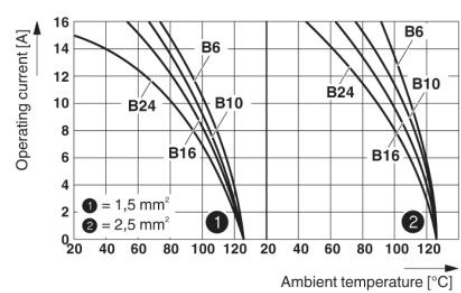
CSA, GOST, UL

Accessories

| Item | Designation | Description |
|----------------|-------------|---|
| General | | |
| 1644326 | HC-B-3PE | PE multiplier, for three PE connections, for HC-B (besides HC-B..E..ZZ) / HC-BB / HC-DD / HC-D40 / HC-D64 contact inserts |
| 1604997 | HC-B-PES | PE screw, for contact inserts HC-B / HC-BB / HC-DD / HC-D40 / HC-D64 |
| 1685327 | HC-B-ZG | Strain relief clamps contact inserts of series: B-, BB-, D 40, D 64, DD and HV, straight cable exit |
| 1685330 | HC-B-ZS | Strain relief clamps contact inserts of series: B-, BB-, D 40, D 64, DD and HV, lateral cable exit |
| 1772722 | HC-CB | Coding pin, prevents mismatching of up to six plug connectors with an identical number of positions |
| 1676860 | HC-CBU | Keying socket for coding up to 16 plug connectors |
| 1676857 | HC-CST | Keying peg for coding up to 16 plug connectors |
| 1687969 | HC-SMR-B10 | HEAVYCON connector assembly frame, for contact inserts of type B10 |

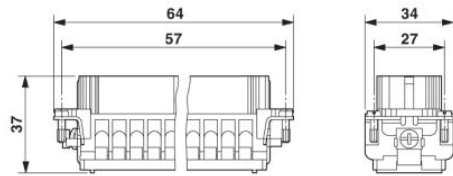
Diagrams/Drawings

Diagram

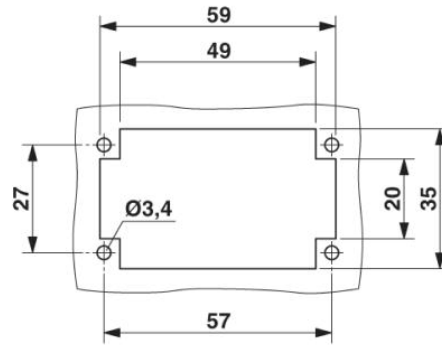


Derating diagram: Series HC-B...S / HC-B...C

Dimensioned drawing

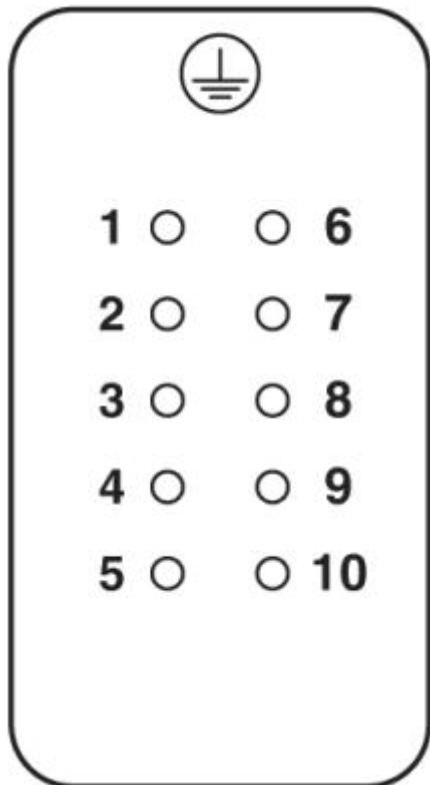


Female insert



Panel cutout

Schematic diagram



Connector pin assignment, connection side

Address

PHOENIX CONTACT Deutschland GmbH
Flachmarktstr. 8
32825 Blomberg, Germany
Phone +49 5235 3 12000
Fax +49 5235 3 41200
<http://www.phoenixcontact.de>



© 2010 Phoenix Contact
Technical modifications reserved;