



Chipsmall Limited consists of a professional team with an average of over 10 year of expertise in the distribution of electronic components. Based in Hongkong, we have already established firm and mutual-benefit business relationships with customers from,Europe,America and south Asia,supplying obsolete and hard-to-find components to meet their specific needs.

With the principle of “Quality Parts,Customers Priority,Honest Operation,and Considerate Service”,our business mainly focus on the distribution of electronic components. Line cards we deal with include Microchip,ALPS,ROHM,Xilinx,Pulse,ON,Everlight and Freescale. Main products comprise IC,Modules,Potentiometer,IC Socket,Relay,Connector.Our parts cover such applications as commercial,industrial, and automotives areas.

We are looking forward to setting up business relationship with you and hope to provide you with the best service and solution. Let us make a better world for our industry!



## Contact us

Tel: +86-755-8981 8866 Fax: +86-755-8427 6832

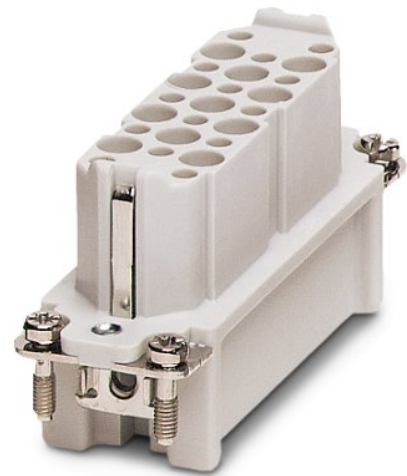
Email & Skype: info@chipsmall.com Web: www.chipsmall.com

Address: A1208, Overseas Decoration Building, #122 Zhenhua RD., Futian, Shenzhen, China



# HC-D 25-EBUC

Order No.: 1772405



<http://eshop.phoenixcontact.de/phoenix/treeViewClick.do?UID=1772405>

HEAVYCON female insert, D25 series, 25-pos., crimp connection

| Commercial data          |                    |
|--------------------------|--------------------|
| EAN                      | 4017918037079      |
| Pack                     | 10 pcs.            |
| Customs tariff           | 85366990           |
| Weight/Piece             | 0.04803 KG         |
| Catalog page information | Page 439 (PC-2009) |

#### Product notes

WEEE/RoHS-compliant since:  
02/17/2006



<http://www.download.phoenixcontact.com>  
Please note that the data given here has been taken from the online catalog. For comprehensive information and data, please refer to the user documentation. The General Terms and Conditions of Use apply to Internet downloads.

## Technical data

| General data                    |                                                                                              |
|---------------------------------|----------------------------------------------------------------------------------------------|
| Note                            | For HC-D25 housing, crimp contacts CK1,6-ED (crimp contacts not included in scope of supply) |
| Connection method               | Crimp connection                                                                             |
| Ambient temperature (operation) | -40 °C ... 125 °C (including heating up of contacts)                                         |

|                                         |                                                                                                |
|-----------------------------------------|------------------------------------------------------------------------------------------------|
| Pollution degree                        | 3                                                                                              |
| Surge voltage category                  | III                                                                                            |
| Constructional and testing regulations  | DIN VDE 0627/86                                                                                |
|                                         | DIN VDE 0110/02.79                                                                             |
|                                         | DIN VDE 0110-1/04.97                                                                           |
|                                         | IEC 60664-1, DIN IEC 60512                                                                     |
|                                         | IEC 60352                                                                                      |
| Number of positions                     | 25                                                                                             |
| Insertion/withdrawal cycles             | ≥ 500                                                                                          |
| Design                                  | D25                                                                                            |
| Connection in acc. with standard        | IEC / EN                                                                                       |
| Conductor cross section                 | 0.14 mm <sup>2</sup> ... 2.5 mm <sup>2</sup>                                                   |
| Connection cross section AWG            | 26 ... 14                                                                                      |
| Stripping length of the individual wire | 8 mm                                                                                           |
|                                         | 6 mm (2.5 mm <sup>2</sup> )                                                                    |
| Assembly instructions                   | Connectors may be operated only when there is no load/voltage.                                 |
| Connection                              | - Use of HC-CST (1676857) keying pins and HC-CBU (1676860) keying sockets has been prescribed. |

#### Material data

|                                    |                       |
|------------------------------------|-----------------------|
| Inflammability class acc. to UL 94 | V0                    |
| Contact material                   | Copper alloy          |
| Contact surface material           | Ag (alternatively Au) |
| Contact carrier material           | PA                    |

#### Electrical characteristics

|                       |       |
|-----------------------|-------|
| Rated voltage (III/3) | 250 V |
| Rated surge voltage   | 4 kV  |
| Rated current         | 10 A  |

#### Certificates / Approvals



Certification

CSA, GOST, UL

**CSA**

|                       |       |
|-----------------------|-------|
| Nominal voltage $U_N$ | 300 V |
| Nominal current $I_N$ | 10 A  |
| AWG/kcmil             | 22-16 |

**UL**

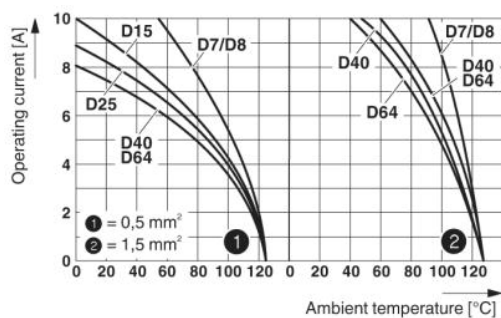
|                       |       |
|-----------------------|-------|
| Nominal voltage $U_N$ | 600 V |
| Nominal current $I_N$ | 10 A  |
| AWG/kcmil             | 22-16 |

**Accessories**

| Item           | Designation | Description                                                                                         |
|----------------|-------------|-----------------------------------------------------------------------------------------------------|
| <b>General</b> |             |                                                                                                     |
| 1645888        | CK1,6-ED-BB | Dummy socket for contact carrier with turned CK 2.5-ED.. female contacts                            |
| 1584868        | HC-A-PES    | PE screw for contact inserts of A series                                                            |
| 1772722        | HC-CB       | Coding pin, prevents mismatching of up to six plug connectors with an identical number of positions |
| 1676860        | HC-CBU      | Keying socket for coding up to 16 plug connectors                                                   |
| 1676857        | HC-CST      | Keying peg for coding up to 16 plug connectors                                                      |
| 1604023        | HC-SMR-D25  | HEAVYCON connector assembly frame, for contact inserts of type D25                                  |

**Diagrams/Drawings**

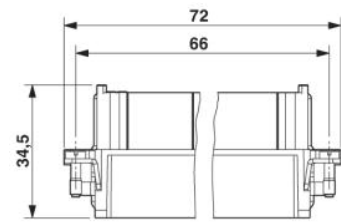
Diagram



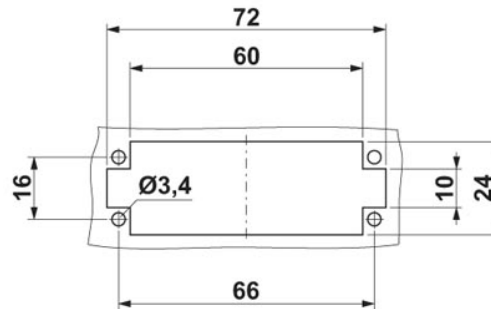
Derating diagram: HC-D...C series



Dimensioned drawing

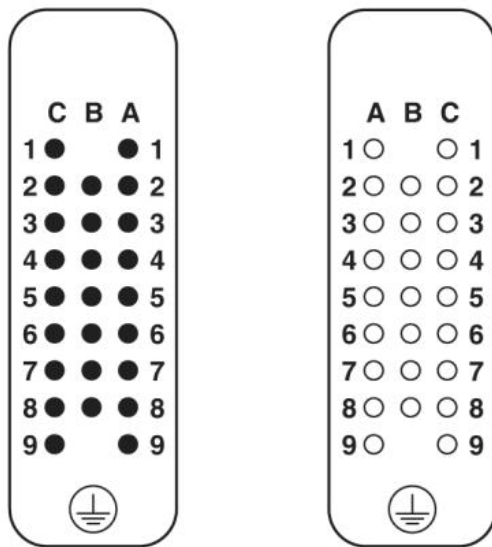


Female insert (turned contacts)



Panel cutout

Schematic diagram



Connector pin assignment connection side: Left pin; right socket

**Address**

PHOENIX CONTACT Deutschland GmbH  
Flachmarktstr. 8  
32825 Blomberg, Germany  
Phone +49 5235 3 12000  
Fax +49 5235 3 41200  
<http://www.phoenixcontact.de>



© 2010 Phoenix Contact  
Technical modifications reserved;