



Chipsmall Limited consists of a professional team with an average of over 10 year of expertise in the distribution of electronic components. Based in Hongkong, we have already established firm and mutual-benefit business relationships with customers from,Europe,America and south Asia,supplying obsolete and hard-to-find components to meet their specific needs.

With the principle of “Quality Parts,Customers Priority,Honest Operation,and Considerate Service”,our business mainly focus on the distribution of electronic components. Line cards we deal with include Microchip,ALPS,ROHM,Xilinx,Pulse,ON,Everlight and Freescale. Main products comprise IC,Modules,Potentiometer,IC Socket,Relay,Connector.Our parts cover such applications as commercial,industrial, and automotives areas.

We are looking forward to setting up business relationship with you and hope to provide you with the best service and solution. Let us make a better world for our industry!



Contact us

Tel: +86-755-8981 8866 Fax: +86-755-8427 6832

Email & Skype: info@chipsmall.com Web: www.chipsmall.com

Address: A1208, Overseas Decoration Building, #122 Zhenhua RD., Futian, Shenzhen, China



THIS DRAWING IS UNPUBLISHED. RELEASED FOR PUBLICATION
 © COPYRIGHT BY TYCO ELECTRONICS CORPORATION. ALL RIGHTS RESERVED.

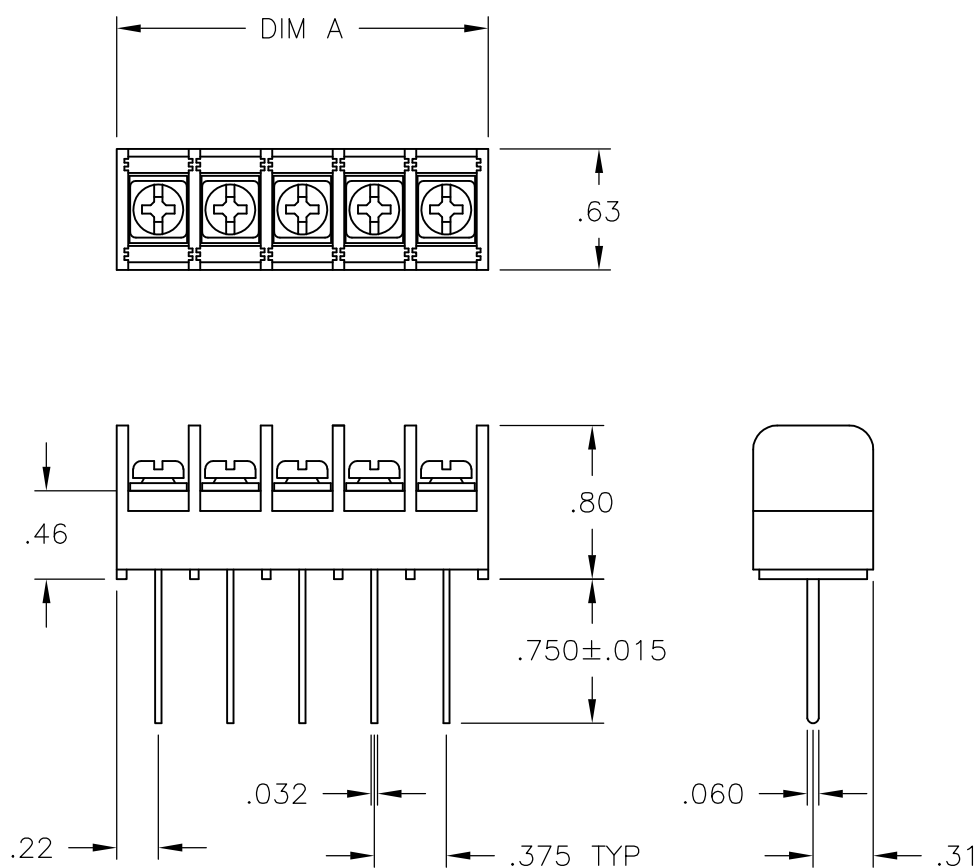
LOC	DIST	REVISIONS					
FT	0	P	LTR	DESCRIPTION	DATE	DWN	APVD
			H	REVISED PER ECO-10-013614	13OCT10	HMR	CR

MATERIAL:
 HOUSING: THERMOPLASTIC, UL94V-0, BLACK.
 TERMINALS: BRIGHT TIN OVER COPPER ALLOY.
 SCREWS: #6-32 STEEL, ZINC PLATING W/ CLEAR CHROMATE.

ELECTRICAL:
 RATED CURRENT UL/CSA:
 CLASS C: 20A, 300V.
 CLASS D: 5A, 600V.
 WIRE RANGE: 12-22 AWG

MECHANICAL:
 RECOMMENDED TORQUE: 7 IN-LB.
 OPERATING TEMP.: 105°C MAX.

⚠ PRELIMINARY PART NUMBER.



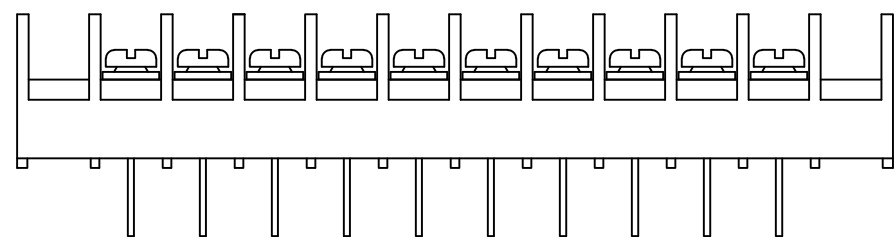
9.436	25	JC6-W108-25	3-1546703-9	
9.061	24	JC6-W108-24	3-1546703-8	
8.686	23	JC6-W108-23	3-1546703-7	
8.311	22	JC6-W108-22	3-1546703-6	
7.936	21	JC6-W108-21	3-1546703-5	
7.561	20	JC6-W108-20	3-796985-0	
7.186	19	JC6-W108-19	3-1546703-4	
6.811	18	JC6-W108-18	3-1546703-3	
6.436	17	JC6-W108-17	3-1546703-2	
6.061	16	JC6-W108-16	3-1546703-1	
5.686	15	JC6-W108-15	3-1546703-0	
5.311	14	JC6-W108-14	2-1546703-9	
4.936	13	JC6-W108-13	2-1546703-8	
SEE FIGURE	4.561	12	JC6-W108-12-198	1776175-1
	4.561	12	JC6-W108-12	2-796985-9
	4.186	11	JC6-W108-11	2-1546703-7
	3.811	10	JC6-W108-10	2-1546703-6
	3.436	9	JC6-W108-09	2-1546703-5
SEE FIGURE	3.811	8	JC6-W108-08-201	1776175-4
	3.061	8	JC6-W108-08	2-1546703-4
	2.686	7	JC6-W108-07	2-1546703-3
SEE FIGURE ⚠	2.311	6	JC6-W108-06-234	1776175-6
SEE FIGURE	2.311	6	JC6-W108-06-200	1776175-3
	2.311	6	JC6-W108-06	2-1546703-2
SEE FIGURE	1.936	5	JC6-W108-05-199	1776175-2
	1.936	5	JC6-W108-05	1-1437666-7
	1.561	4	JC6-W108-04	2-1546703-1
SEE FIGURE ⚠	1.186	3	JC6-W108-03-246	1776175-7
SEE FIGURE	1.186	3	JC6-W108-03-231	1776175-5
	1.186	3	JC6-W108-03	1-1437666-6
	.811	2	JC6-W108-02	2-1546703-0
DIM A	NO OF POS	CATALOG NUMBER	TE PART NO.	

THIS DRAWING IS A CONTROLLED DOCUMENT.		DWN S SCHLEGEL 5/27/03	Tyco Electronics Corporation Harrisburg, PA 17105	
DIMENSIONS: INCHES		CHK S. YODER 5/27/03	NAME	
TOLERANCES UNLESS OTHERWISE SPECIFIED:		APVD S. YODER 5/27/03	JC6-W108-XX ASSEMBLY	
0 PLC ± -		PRODUCT SPEC	SIZE CAGE CODE DRAWING NO RESTRICTED TO	
1 PLC ± -		APPLICATION SPEC	A3 00779 C-1-1437666-6	
2 PLC ± .01		WEIGHT -	SCALE NTS SHEET 1 OF 2 REV H	
3 PLC ± .005				
4 PLC ± -				
ANGLES ± -				
MATERIAL -				
FINISH -				

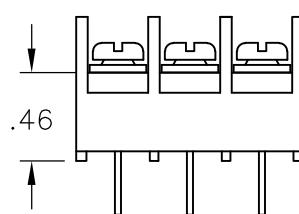
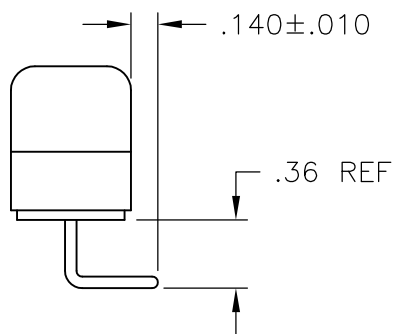
THIS DRAWING IS UNPUBLISHED. RELEASED FOR PUBLICATION

© COPYRIGHT BY TYCO ELECTRONICS CORPORATION. ALL RIGHTS RESERVED.

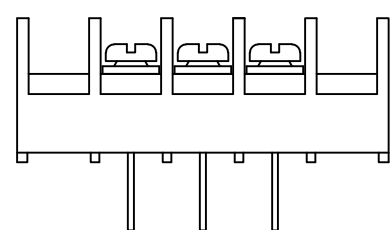
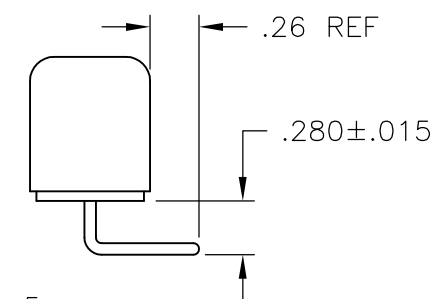
LOC	DIST	REVISIONS					
FT	0	P	LTR	DESCRIPTION	DATE	DWN	APVD
		-		SEE SHEET 1	-	-	-



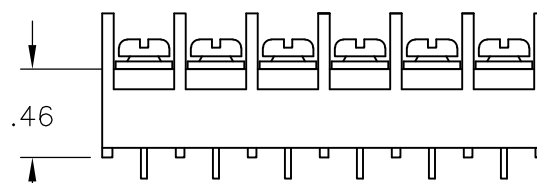
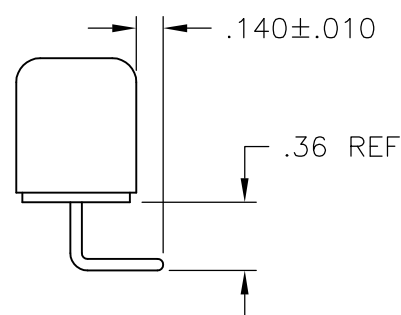
1776175-1



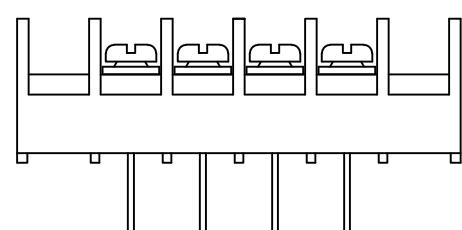
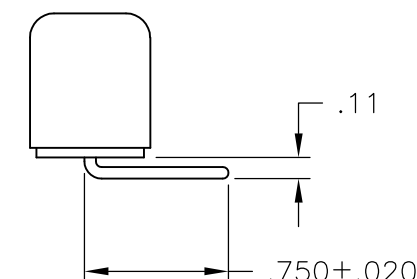
1776175-5



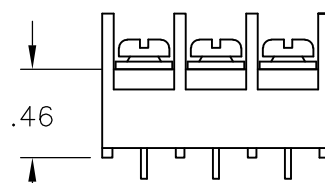
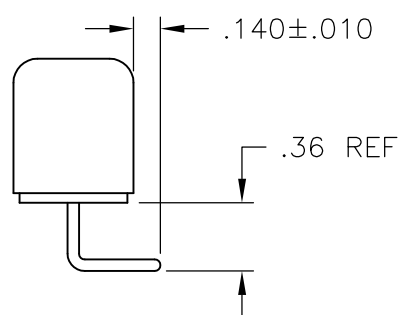
1776175-2



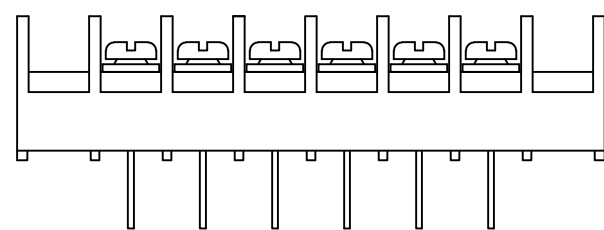
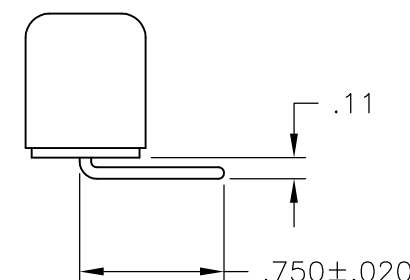
1776175-6



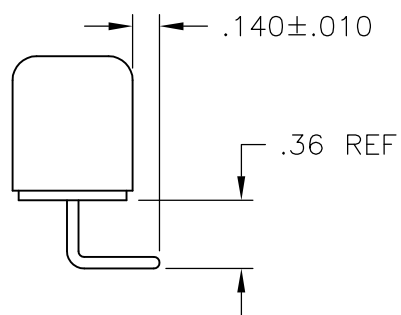
1776175-3



1776175-7

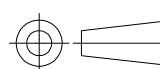


1776175-4



THIS DRAWING IS A CONTROLLED DOCUMENT.

DIMENSIONS:
INCHES



TOLERANCES UNLESS OTHERWISE SPECIFIED:

0 PLC	± -
1 PLC	± -
2 PLC	± .01
3 PLC	± .005
4 PLC	± -
ANGLES	± -

MATERIAL

FINISH

DWN S SCHLEGEL 5/27/03

CHK S. YODER 5/27/03

APVD S. YODER 5/27/03

PRODUCT SPEC

APPLICATION SPEC

WEIGHT -

CUSTOMER DRAWING



Tyco Electronics Corporation
Harrisburg, PA 17105

NAME

JC6-W108-XX ASSEMBLY

SIZE

CAGE CODE

DRAWING NO

RESTRICTED TO

A3 00779 C-1-1437666-6

SCALE NTS

SHEET 2 OF 2

REV H