



Chipsmall Limited consists of a professional team with an average of over 10 year of expertise in the distribution of electronic components. Based in Hongkong, we have already established firm and mutual-benefit business relationships with customers from,Europe,America and south Asia,supplying obsolete and hard-to-find components to meet their specific needs.

With the principle of “Quality Parts,Customers Priority,Honest Operation,and Considerate Service”,our business mainly focus on the distribution of electronic components. Line cards we deal with include Microchip,ALPS,ROHM,Xilinx,Pulse,ON,Everlight and Freescale. Main products comprise IC,Modules,Potentiometer,IC Socket,Relay,Connector.Our parts cover such applications as commercial,industrial, and automotives areas.

We are looking forward to setting up business relationship with you and hope to provide you with the best service and solution. Let us make a better world for our industry!



Contact us

Tel: +86-755-8981 8866 Fax: +86-755-8427 6832

Email & Skype: info@chipsmall.com Web: www.chipsmall.com

Address: A1208, Overseas Decoration Building, #122 Zhenhua RD., Futian, Shenzhen, China



THIS DRAWING IS UNPUBLISHED. RELEASED FOR PUBLICATION
 © COPYRIGHT BY TYCO ELECTRONICS CORPORATION. ALL RIGHTS RESERVED.

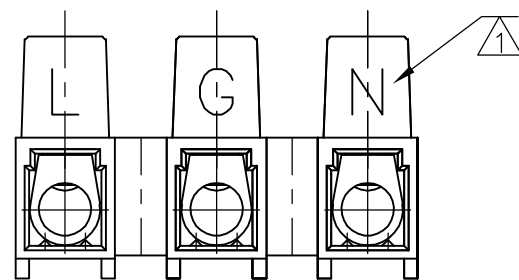
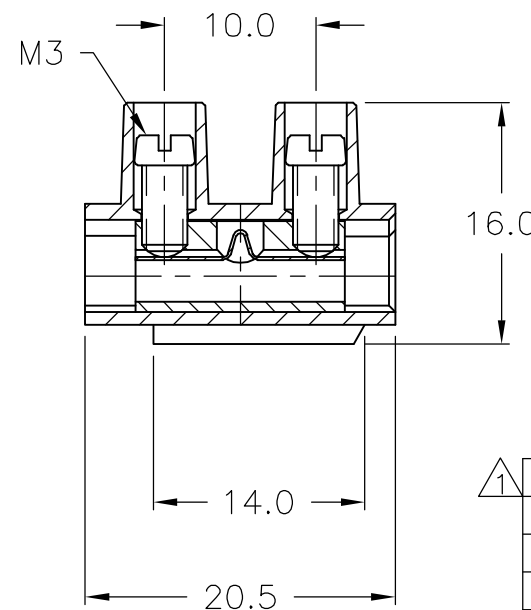
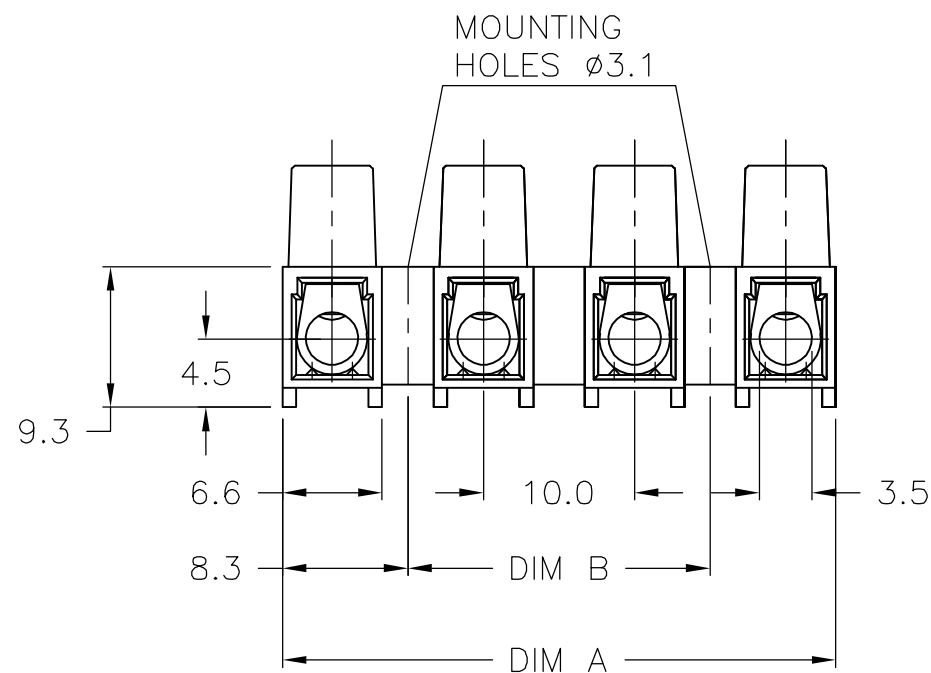
| LOC | DIST | REVISIONS | | | | | |
|-----|------|-----------|-----|-------------------------|---------|-----|------|
| FT | 0 | P | LTR | DESCRIPTION | DATE | DWN | APVD |
| | | 01 | | REVISED PER ECO-06-5526 | 3/10/06 | SS | CR |

MATERIAL:
 HOUSING: POLYAMIDE 6/6 UL94V-0.
 COLOR: BROWN
 TERMINAL: BRASS, TIN PLATED
 SCREWS: STEEL, ZINC PLATED W/ NON-HEXAVALENT CHROMATE (CHROME III).
 WIRE PROTECTOR: STAINLESS STEEL

ELECTRICAL:
 CURRENT RATING: 30A
 OPERATING VOLTAGE: 250V
 WIRE RANGE: 12-24 AWG

ENVIRONMENTAL:
 CONTINUOUS WORKING TEMP: -50°C TO +160°C

⚠ PART TO BE PERMANENTLY MARKED AS SHOWN, BLACK LETTERING.



1-1776298-3

| | | | | |
|-------|-------|------------|------------------|-------------|
| 10.0 | 26.6 | 3 | - | 1-1776298-3 |
| 100.0 | 116.6 | 12 | TSB500 1231DS HT | 1-1776298-2 |
| 90.0 | 106.6 | 11 | TSB500 1131DS HT | 1-1776298-1 |
| 80.0 | 96.6 | 10 | TSB500 1031DS HT | 1-1776298-0 |
| 70.0 | 86.6 | 9 | TSB500 0931DS HT | 1776298-9 |
| 60.0 | 76.6 | 8 | TSB500 0831DS HT | 1776298-8 |
| 50.0 | 66.6 | 7 | TSB500 0731DS HT | 1776298-7 |
| 40.0 | 56.6 | 6 | TSB500 0631DS HT | 1776298-6 |
| 30.0 | 46.6 | 5 | TSB500 0531DS HT | 1776298-5 |
| 20.0 | 36.6 | 4 | TSB500 0431DS HT | 1776298-4 |
| 10.0 | 26.6 | 3 | TSB500 0331DS HT | 1776298-3 |
| - | 16.6 | 2 | TSB500 0231DS HT | 1776298-2 |
| - | 6.6 | 1 | TSB500 0131DS HT | 1776298-1 |
| DIM B | DIM A | NO. OF POS | CATALOG PART NO. | PART NO. |

| | | | | |
|---|--|------------------------|--|-----------------|
| THIS DRAWING IS A CONTROLLED DOCUMENT. | | DWN S SCHLEGEL 3/18/05 | Tyco Electronics Corporation Harrisburg, PA 17105-3608 | |
| DIMENSIONS: mm | | CHK C RICHARD 3/18/05 | | |
| TOLERANCES UNLESS OTHERWISE SPECIFIED: | | APVD C RICHARD 3/18/05 | NAME | |
| 0 PLC ± - 1 PLC ± 0.3 2 PLC ± 0.25 3 PLC ± - 4 PLC ± - ANGLES ± 2° | | PRODUCT SPEC - | EUROPA TERMINAL BLOCK W/ WIRE PROTECTOR MOUNTING HOLES 3.1 DIA, 10.0mm PITCH, HIGH TEMP | |
| MATERIAL - | | FINISH - | APPLICATION SPEC - | RESTRICTED TO - |
| | | WEIGHT - | SIZE A3 | CAGE CODE 00779 |
| | | CUSTOMER DRAWING | DRAWING NO C-1776298 | RESTRICTED TO - |
| | | | SCALE NTS | SHEET 1 OF 1 |
| | | | | REV 01 |