



Chipsmall Limited consists of a professional team with an average of over 10 year of expertise in the distribution of electronic components. Based in Hongkong, we have already established firm and mutual-benefit business relationships with customers from,Europe,America and south Asia,supplying obsolete and hard-to-find components to meet their specific needs.

With the principle of "Quality Parts,Customers Priority,Honest Operation,and Considerate Service",our business mainly focus on the distribution of electronic components. Line cards we deal with include Microchip,ALPS,ROHM,Xilinx,Pulse,ON,Everlight and Freescale. Main products comprise IC,Modules,Potentiometer,IC Socket,Relay,Connector.Our parts cover such applications as commercial,industrial, and automotives areas.

We are looking forward to setting up business relationship with you and hope to provide you with the best service and solution. Let us make a better world for our industry!



## Contact us

Tel: +86-755-8981 8866 Fax: +86-755-8427 6832

Email & Skype: info@chipsmall.com Web: www.chipsmall.com

Address: A1208, Overseas Decoration Building, #122 Zhenhua RD., Futian, Shenzhen, China



THIS DRAWING IS UNPUBLISHED. RELEASED FOR PUBLICATION  
 © COPYRIGHT BY TYCO ELECTRONICS CORPORATION. ALL RIGHTS RESERVED.

REVISIONS				DATE	DWN	APVD
P	LTR	DESCRIPTION				
	A1	REVISED PER ECO-10-009056	09AUG10	HMR	CR	

PHYSICAL PROPERTIES:  
 HOUSING MATERIAL: PBT  
 FLAMMABILITY: UL94V-0  
 COLOR: BLACK  
 MAX BOW/WARP: .0056 IN/IN.

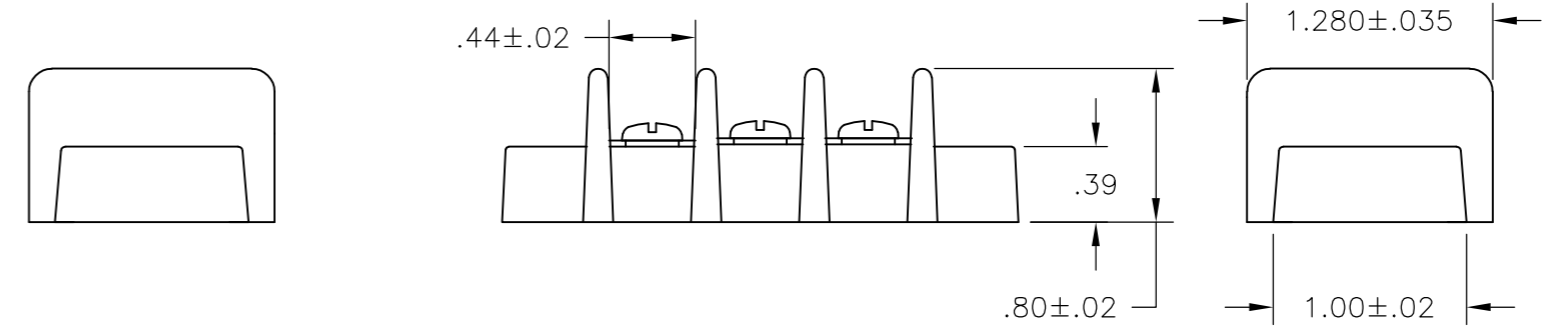
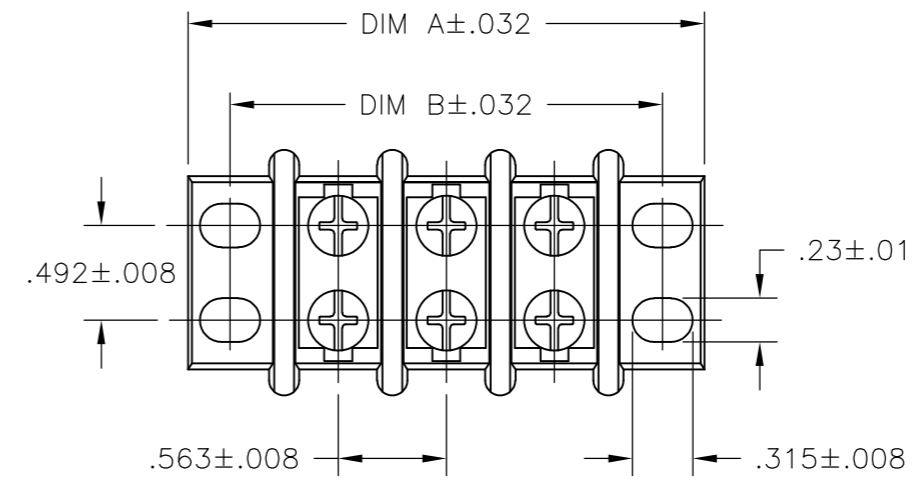
TERMINAL:  
 TERMINALS: BRASS, TIN PLATED. (UNLESS OTHERWISE STATED)  
 SCREWS: 8-32 STEEL, NICKEL PLATED. (UNLESS OTHERWISE STATED)  
 Q.C. TABS: BRASS, NICKEL PLATED.

MECHANICAL:  
 PITCH (TERMINAL SPACING): .563"  
 WIRE RANGE: 10-22 AWG  
 RECOMMENDED TIGHTENING TORQUE: 14IN-LBS MAX.

ELECTRICAL PROPERTIES:  
 MAXIMUM CURRENT: 30A  
 OPERATING VOLTAGE: 600V

ENVIRONMENTAL PROPERTIES:  
 OPERATING TEMP RANGE: -40° TO +120°C

- 1 NICKEL PLATED BRASS SCREWS.
- 2 PRELIMINARY PART NUMBER.



-	-	-	-	-	-	-	-	-	10.701	11.138	18	1-1776544-8
-	-	-	-	-	-	-	-	-	10.138	10.575	17	1-1776544-7
-	-	-	-	-	-	-	-	-	9.575	10.012	16	1-1776544-6
-	-	-	-	-	-	-	-	-	9.012	9.449	15	1-1776544-5
2	-	-	-	-	-	-	-	-	8.449	8.886	14	2-1776544-4
-	-	-	-	-	-	-	-	-	8.449	8.886	14	1-1776544-4
-	-	-	-	-	-	-	-	-	7.886	8.323	13	1-1776544-3
-	-	-	-	-	-	-	-	-	7.323	7.760	12	1-1776544-2
2	-	-	-	-	-	-	-	-	6.760	7.179	11	2-1776544-3
-	-	-	-	-	-	-	-	-	6.760	7.179	11	1-1776544-1
2	-	-	-	-	-	-	-	-	6.197	6.634	10	2-1776544-2
-	-	-	-	-	-	-	-	-	6.197	6.634	10	1-1776544-0
-	-	-	-	-	-	-	-	-	5.634	6.071	9	1776544-9
2	-	-	-	-	-	-	-	-	5.071	5.508	8	2-1776544-5
-	-	-	-	-	-	-	-	-	5.071	5.508	8	1776544-8
-	-	-	-	-	-	-	-	-	4.508	4.945	7	1776544-7
2	-	-	-	-	-	-	-	-	3.945	4.382	6	2-1776544-1
-	-	-	-	-	-	-	-	-	3.945	4.382	6	1776544-6
-	-	-	-	-	-	-	-	-	3.382	3.819	5	1776544-5
2	-	-	-	-	-	-	-	-	2.819	3.256	4	2-1776544-0
-	-	-	-	-	-	-	-	-	2.819	3.256	4	1776544-4
2	-	-	-	-	-	-	-	-	2.256	2.693	3	1-1776544-9
-	-	-	-	-	-	-	-	-	2.256	2.693	3	1776544-3
-	-	-	-	-	-	-	-	-	1.693	2.130	2	1776544-2
NOTES	8 .250 QC TAB 90° DOUBLE SIDE	7 .250 QC TAB 90°/45° DOUBLE SIDE	6 .250 QC TAB 90° DOUBLE SIDE	5 .250 QC TAB 45° DOUBLE SIDE	4 .250 QC TAB STRAIGHT DOUBLE SIDE	3 .250 QC TAB 90° SINGLE SIDE	2 .250 QC TAB 45° SINGLE SIDE	1 .250 QC TAB STRAIGHT SINGLE SIDE	DIM B	DIM A	NO. OF POSN	PART NUMBER

THIS DRAWING IS A CONTROLLED DOCUMENT.

DWN	S SCHLEGEL	2/21/07
CHK	S YODER	2/21/07
APVD	S YODER	2/21/07
PRODUCT SPEC		
APPLICATION SPEC		
WEIGHT	-	
CUSTOMER DRAWING		

TOLERANCES UNLESS OTHERWISE SPECIFIED:  
 0 PLC ± -  
 1 PLC ± -  
 2 PLC ± -  
 3 PLC ± -  
 4 PLC ± -  
 ANGLES ± -  
 FINISH -

**Tyco Electronics** Tyco Electronics Corporation  
 Harrisburg, PA 17105-3608

NAME: 14.3 (.563) DBL ROW BARRIER STRIP W/O WASHER, 600v

SIZE	CAGE CODE	DRAWING NO	RESTRICTED TO
A2	00779	C=1776544	-
SCALE	NTS	SHEET	1 OF 1
REV	A1		