



Chipsmall Limited consists of a professional team with an average of over 10 year of expertise in the distribution of electronic components. Based in Hongkong, we have already established firm and mutual-benefit business relationships with customers from,Europe,America and south Asia,supplying obsolete and hard-to-find components to meet their specific needs.

With the principle of “Quality Parts,Customers Priority,Honest Operation,and Considerate Service”,our business mainly focus on the distribution of electronic components. Line cards we deal with include Microchip,ALPS,ROHM,Xilinx,Pulse,ON,Everlight and Freescale. Main products comprise IC,Modules,Potentiometer,IC Socket,Relay,Connector.Our parts cover such applications as commercial,industrial, and automotives areas.

We are looking forward to setting up business relationship with you and hope to provide you with the best service and solution. Let us make a better world for our industry!



## Contact us

Tel: +86-755-8981 8866 Fax: +86-755-8427 6832

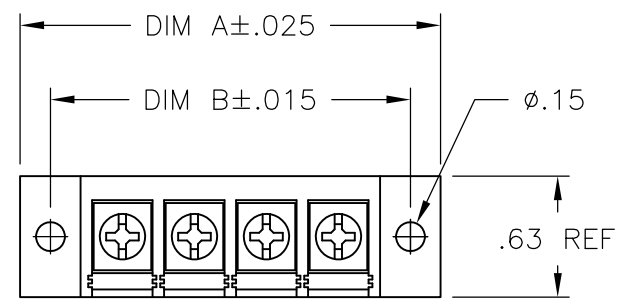
Email & Skype: info@chipsmall.com Web: www.chipsmall.com

Address: A1208, Overseas Decoration Building, #122 Zhenhua RD., Futian, Shenzhen, China



THIS DRAWING IS UNPUBLISHED. RELEASED FOR PUBLICATION  
 © COPYRIGHT BY TYCO ELECTRONICS CORPORATION. ALL RIGHTS RESERVED.

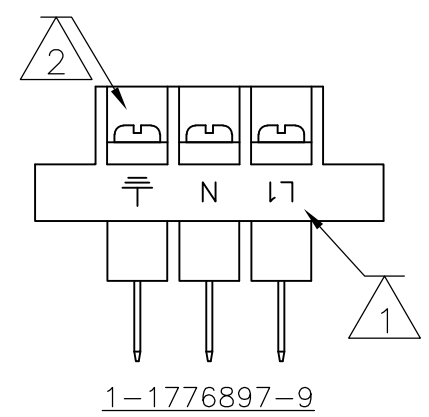
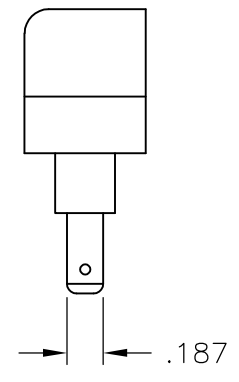
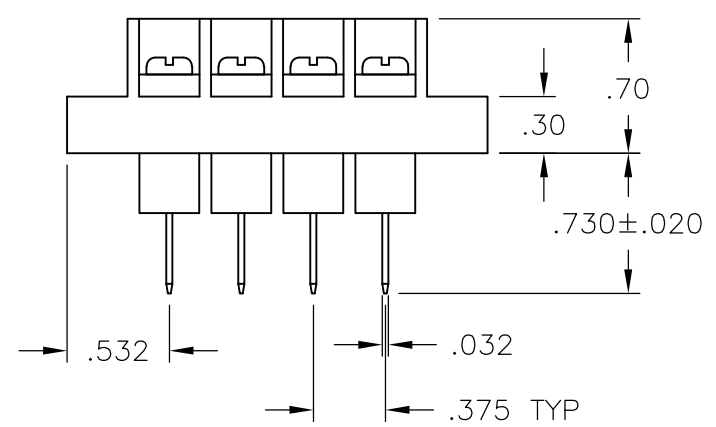
LOC	DIST	REVISIONS					
FT	0	P	LTR	DESCRIPTION	DATE	DWN	APVD
			C	REVISED PER ECO-10-013203	25JUN10	HMR	CR



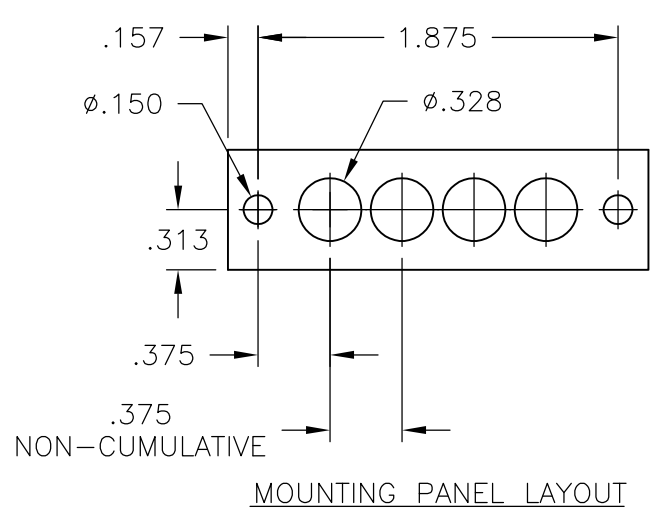
PHYSICAL PROPERTIES:  
 HOUSING: THERMOPLASTIC, UL94V-0, BLACK.  
 TERMINALS: BRIGHT TIN OVER COPPER ALLOY.  
 SCREWS: 6-32 STEEL, ZINC PLATING W/ CLEAR CHROMATE.  
 PITCH: .375"  
 MAX OPERATING TEMP.: +105°C  
 RECOMMENDED TIGHTENING TORQUE: 7 IN-LBS.

ELECTRICAL PROPERTIES:  
 CURRENT RATING: 20A  
 OPERATING VOLTAGE: 300V  
 WIRE RANGE: 12-22 AWG

- 1 MARKED WITH WHITE PERMANENT INK.
- 2 SCREW IS GREEN.



7.439	6.375	18	BC6-F307-18	1-1776897-8
7.064	6.000	17	BC6-F307-17	1-1776897-7
6.689	5.625	16	BC6-F307-16	1-1776897-6
6.314	5.250	15	BC6-F307-15	1-1776897-5
5.939	4.875	14	BC6-F307-14	1-1776897-4
5.564	4.500	13	BC6-F307-13	1-1776897-3
5.189	4.125	12	BC6-F307-12	1-1776897-2
4.814	3.750	11	BC6-F307-11	1-1776897-1
4.439	3.375	10	BC6-F307-10	1-1776897-0
4.064	3.000	9	BC6-F307-09	1776897-9
3.689	2.625	8	BC6-F307-08	1776897-8
3.314	2.250	7	BC6-F307-07	1776897-7
2.939	1.875	6	BC6-F307-06	1776897-6
2.564	1.500	5	BC6-F307-05	1776897-5
2.189	1.125	4	BC6-F307-04	1776897-4
1.814	.750	3	BC6-F307-03-292	1-1776897-9
1.814	.750	3	BC6-F307-03	1776897-3
1.439	.375	2	BC6-F307-02	1776897-2



THIS DRAWING IS A CONTROLLED DOCUMENT.		DWN S. SCHLEGEL 9/27/06	Tyco Electronics Corporation Harrisburg, PA 17105-3608	
DIMENSIONS: INCHES		CHK S. YODER 9/27/06	NAME	
TOLERANCES UNLESS OTHERWISE SPECIFIED:		APVD S. YODER 9/27/06	BC6-F307-XX ASSEMBLY	
0 PLC ± -		PRODUCT SPEC	SIZE CAGE CODE DRAWING NO RESTRICTED TO	
1 PLC ± -		APPLICATION SPEC	A3 00779 C-1776897	
2 PLC ± -		WEIGHT -	SCALE 1:1 SHEET 1 OF 1 REV C	
3 PLC ± -		CUSTOMER DRAWING		
4 PLC ± -				
ANGLES ± -				
FINISH -				