



Chipsmall Limited consists of a professional team with an average of over 10 year of expertise in the distribution of electronic components. Based in Hongkong, we have already established firm and mutual-benefit business relationships with customers from,Europe,America and south Asia,supplying obsolete and hard-to-find components to meet their specific needs.

With the principle of “Quality Parts,Customers Priority,Honest Operation,and Considerate Service”,our business mainly focus on the distribution of electronic components. Line cards we deal with include Microchip,ALPS,ROHM,Xilinx,Pulse,ON,Everlight and Freescale. Main products comprise IC,Modules,Potentiometer,IC Socket,Relay,Connector.Our parts cover such applications as commercial,industrial, and automotives areas.

We are looking forward to setting up business relationship with you and hope to provide you with the best service and solution. Let us make a better world for our industry!



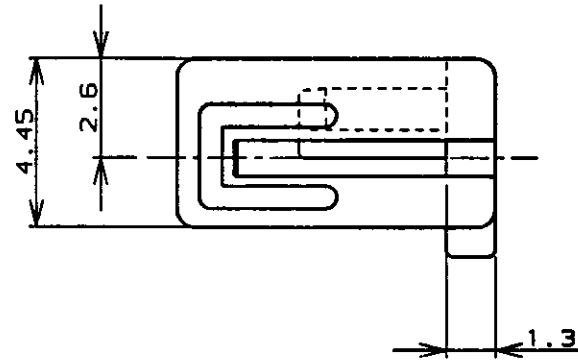
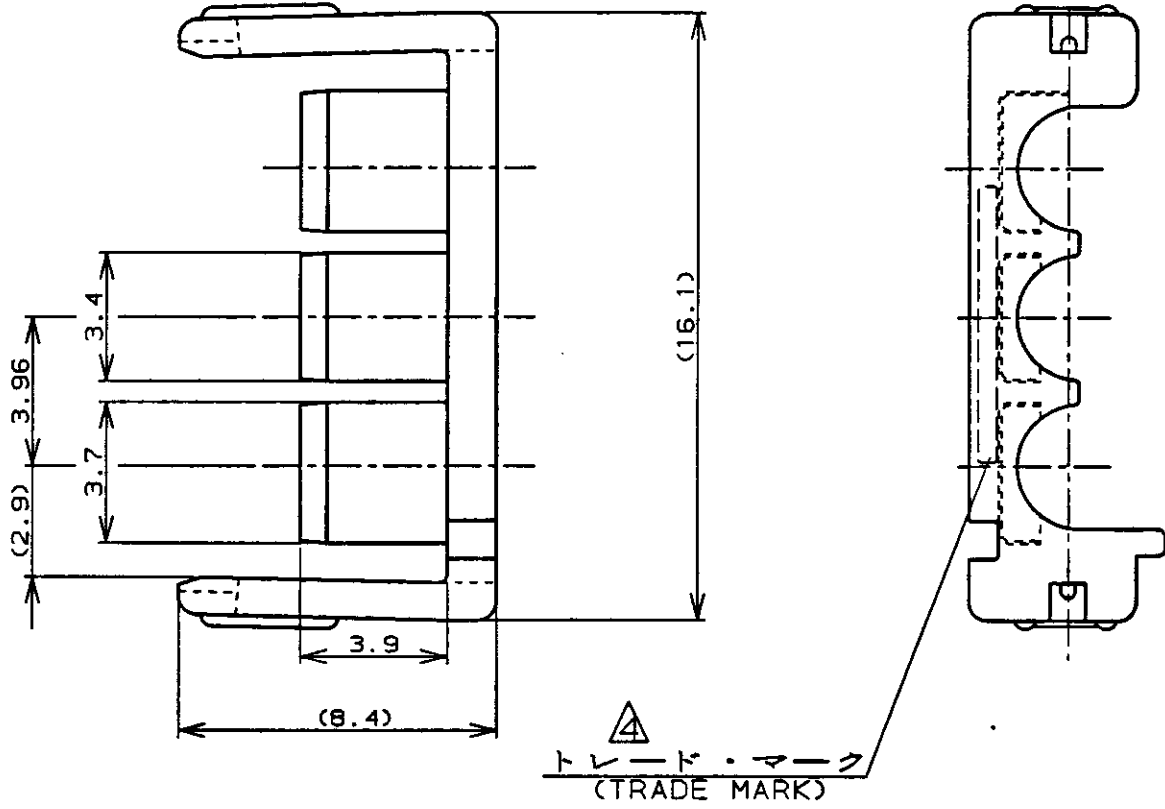
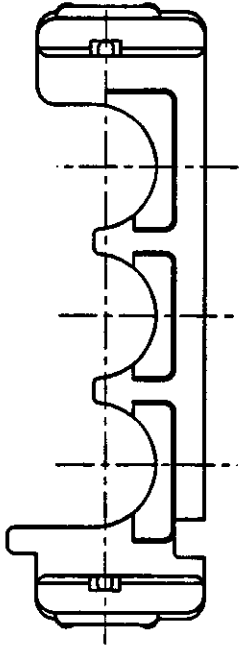
Contact us

Tel: +86-755-8981 8866 Fax: +86-755-8427 6832

Email & Skype: info@chipsmall.com Web: www.chipsmall.com

Address: A1208, Overseas Decoration Building, #122 Zhenhua RD., Futian, Shenzhen, China





注,

- 1. 通用製品規格: 108-5410
- 2. 通用製品型番: 表1参照
- 3. 取扱説明書: 411-5638
- △ 表2参照

NOTES;

- 1. PRODUCT SPEC: 108-5410
- 2. APPLICABLE CONN, P/N: SEE TABLE 2
- 3. INSTRUCTION SHEET: 411-5638
- △ SEE TABLE 2

表1 (TABLE 1)

プラグハウジング PLUG HOUSING		3	177899-□
		6	177901-□
		9	177903-□
キャップ ハウジング CAP HOUSING	パネル マウント型 P/M	3	177907-□
		6	177909-□
		9	177911-□
CAP HOUSING	盲吊り型 F/H	3	179464-□
		6	179466-□
通用製品 APPLICABLE PRODUCT	極数 (Pos.)		型番 (P/N)

表2 (TABLE 2)

トレードマーク (TRADE MARK)	生産場所 (MANUFACTURING PLACE)
-AMP OR AMP	日本 (JAPAN)
-+AMP OR AMP	中国 (CHINA(PRC))

自然色 (NATURAL)	3	177919-1
プレート色調 (PLATE COLOR)	極数 (Pos.)	型番 (P/N)

LTR	変更 (REVISION RECORD)	DR	CHK	DATE	CHK.
B	変更 REVISD	FJ00-4806-95	M.S.	4/17/95	M. SUZUKI
A	変更 REVISD	FJ00-2350-95	N.Y.	4/17/95	M. SUZUKI
O	作成 PROSDED	FJ00-0791-93	M.S.	9/8/93	M. SUZUKI
					M. SHINDO

Copyright ©1993年 AMP (Japan), LTD. ALL RIGHTS RESERVED.		Copyright ©1993 AMP (Japan), LTD. ALL RIGHTS RESERVED.		AMP		日本エー・エム・ピー株式会社 Tokyo, Japan	
和合電線断面積 (WIRE RANGE) — mm ² (AWG —)		被覆外径 (INSULATION DIA.) 1.3 ~ 2.8 mmφ		名称 (NAME) アンパ パワー ダブルロック コネクタ 3極 3.96mmピッチ ダブルロック プレート AMP POWER DOUBLE LOCK CONN. 3.96mm PITCH DBL LOCK PLATE 3Pos			
材料 (MATERIAL) 6/6 ナイロン (UL94V-0) ガラス強化 6/6 NYLON GLASS FILLED (UL 94V-0)		仕上 (FINISH) —		一般公差 (GENERAL TOLERANCE)		LOC 番号 (No.)	
DR. 8. SEP '93 M. SUZUKI		DE. 8. SEP '93 M. SUZUKI		10以下: ±0.2 10~30以下: ±0.25 30~100以下: ±0.3 角 度: ±3°		B J C-177919	
CHK. 8. SEP '93 M. SHINDO		APP. 8. SEP '93 Y. KASHIWA		尺度 (SCALE) —		REV. B SHEET 1 OF 1	