



Chipsmall Limited consists of a professional team with an average of over 10 year of expertise in the distribution of electronic components. Based in Hongkong, we have already established firm and mutual-benefit business relationships with customers from,Europe,America and south Asia,supplying obsolete and hard-to-find components to meet their specific needs.

With the principle of "Quality Parts,Customers Priority,Honest Operation,and Considerate Service",our business mainly focus on the distribution of electronic components. Line cards we deal with include Microchip,ALPS,ROHM,Xilinx,Pulse,ON,Everlight and Freescale. Main products comprise IC,Modules,Potentiometer,IC Socket,Relay,Connector.Our parts cover such applications as commercial,industrial, and automotives areas.

We are looking forward to setting up business relationship with you and hope to provide you with the best service and solution. Let us make a better world for our industry!



## Contact us

Tel: +86-755-8981 8866 Fax: +86-755-8427 6832

Email & Skype: [info@chipsmall.com](mailto:info@chipsmall.com) Web: [www.chipsmall.com](http://www.chipsmall.com)

Address: A1208, Overseas Decoration Building, #122 Zhenhua RD., Futian, Shenzhen, China



NUMBER C-178431

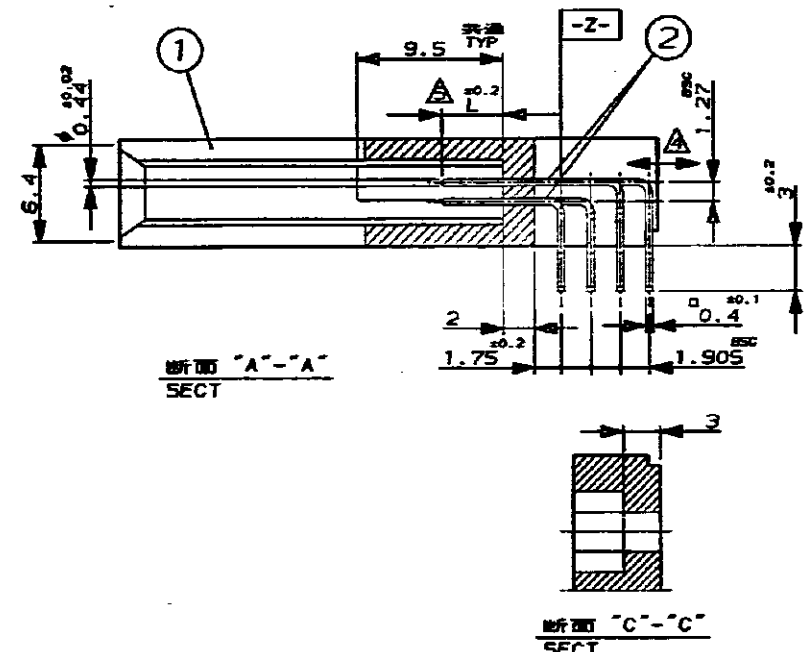
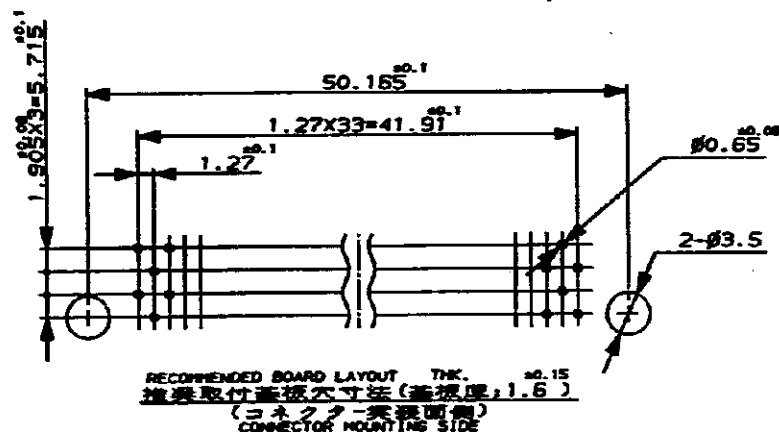
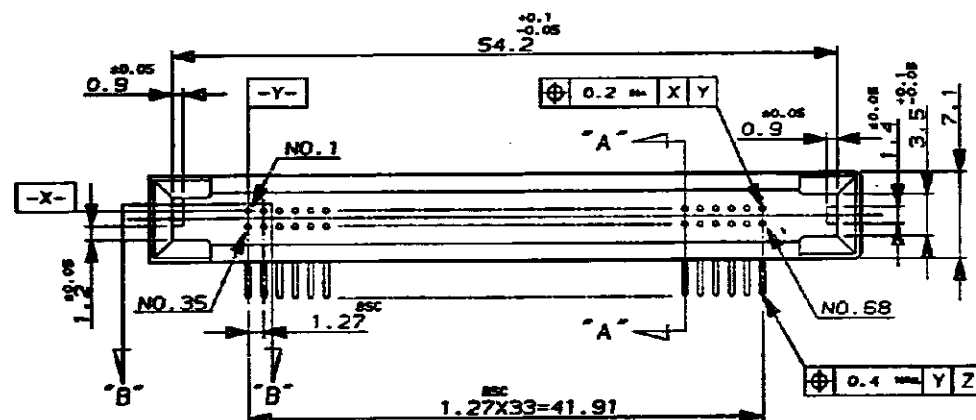
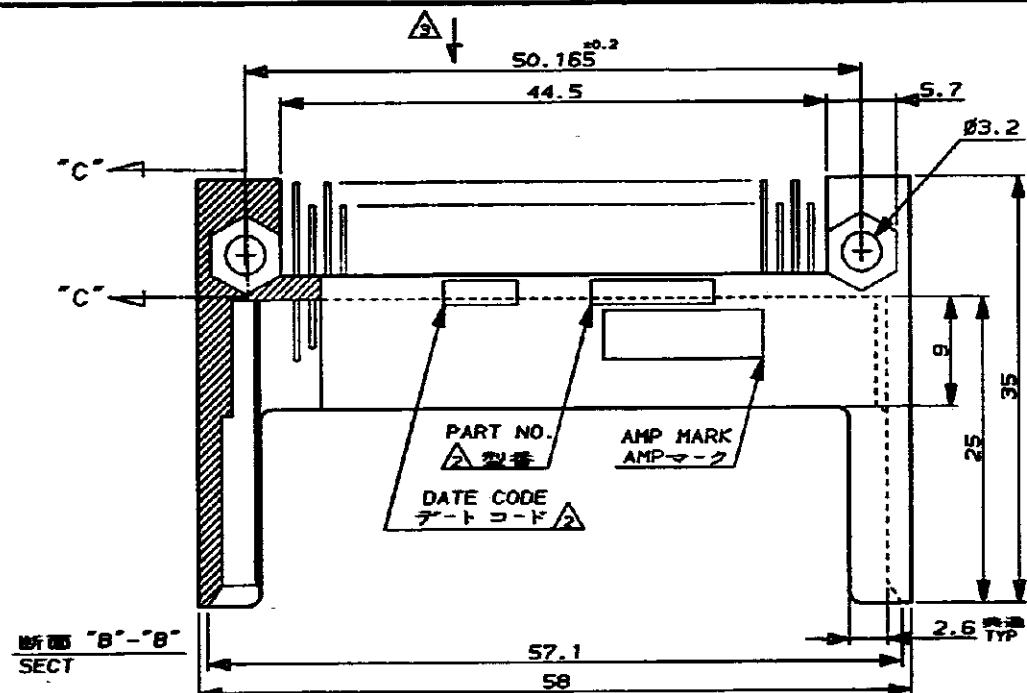
3rd ANGLE PROJECTION

METRIC

DIMENSIONS IN MILLIMETERS. DO NOT SCALE PRINT

PRINT DIST

REV. 10/89



NOTES;

- 1 GENERAL TOLERANCE: ±0.3, ±3°
- △ HOT MARKING
- △ MARKING LETTERS CAN BE READ BY ARROW SIDE.
- △ PULL-OFF FORCE OF POST; 0.8kg MIN.
- △ L DIMENSION AS BELOW.

L	5	3.5	4.25
NO.	1, 17, 34, 35, 51, 68	36, 67	REMAINS

6 MATE WITH 175651-2, 176897-1

注記;

- 1 一般公差: ±0.3, ±3°
- △ ホットマーキングを施す
- △ マーキングは矢視方向から読めること。
- △ この方向のポスト保持力は0.8kg以上
- △ ポスト長Lは下表の通り

L	5	3.5	4.25
品番	1, 17, 34, 35, 51, 68	36, 67	その他

6 かん合相手型番 175651-2, 176897-1

68	CONT. コンタクト	BRASS 黄銅	全面ニッケル下地, 金メッキ (0.3µmMIN) Au PL. TIN-LEAD P (1µmMIN) 半田付け	②
1	ハウジング	ガラス入りPBT (94V-0)	COLOR: BLACK 黒	①
-1	名称 NAME	材料 MATERIAL	仕上 FINISH	ITEM
P/N 型番				

© 1990 BY AMP (Japan) LTD. ALL RIGHTS RESERVED.

**AMP** AMP (JAPAN), LTD. Tokyo, Japan

WIRE RANGE	INSULATION DIA	NAME
mm² CANS - J	mm	ポストヘッダー・アンプメモリカード コネクタ
MATERIAL SEE TABLE 表参照	FINISH SEE TABLE 表参照	POST HDR AMP MEMORY CARD CONN. 1.27 PITCH 68 POS.
DR. T. FUTATSUGI	DE. T. FUTATSUGI	GENERAL TOLERANCE
CHK. S. MANABE	APP. A. TOMITA	SIZE LOC NUMBER
		A3 J C-178431
		SCALE REV. A SHEET 1 OF 1

CUSTOMER DRAWING