



Chipsmall Limited consists of a professional team with an average of over 10 year of expertise in the distribution of electronic components. Based in Hongkong, we have already established firm and mutual-benefit business relationships with customers from,Europe,America and south Asia,supplying obsolete and hard-to-find components to meet their specific needs.

With the principle of “Quality Parts,Customers Priority,Honest Operation,and Considerate Service”,our business mainly focus on the distribution of electronic components. Line cards we deal with include Microchip,ALPS,ROHM,Xilinx,Pulse,ON,Everlight and Freescale. Main products comprise IC,Modules,Potentiometer,IC Socket,Relay,Connector.Our parts cover such applications as commercial,industrial, and automotives areas.

We are looking forward to setting up business relationship with you and hope to provide you with the best service and solution. Let us make a better world for our industry!



## Contact us

Tel: +86-755-8981 8866 Fax: +86-755-8427 6832

Email & Skype: info@chipsmall.com Web: www.chipsmall.com

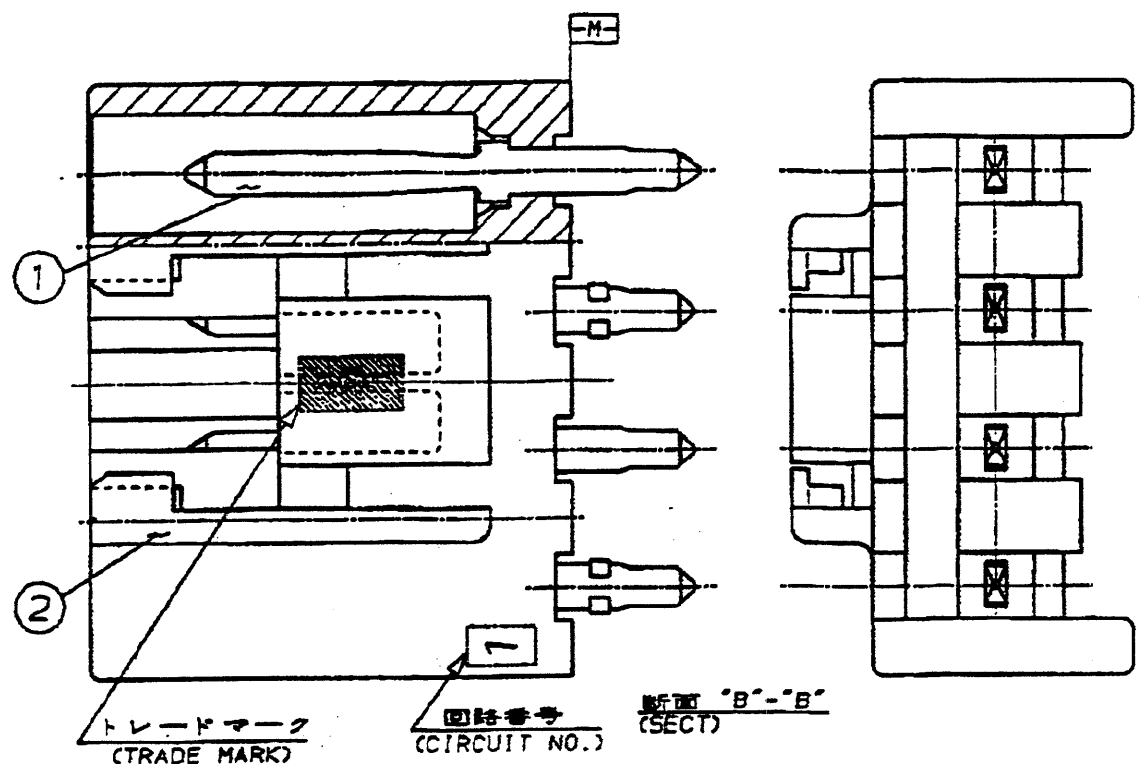
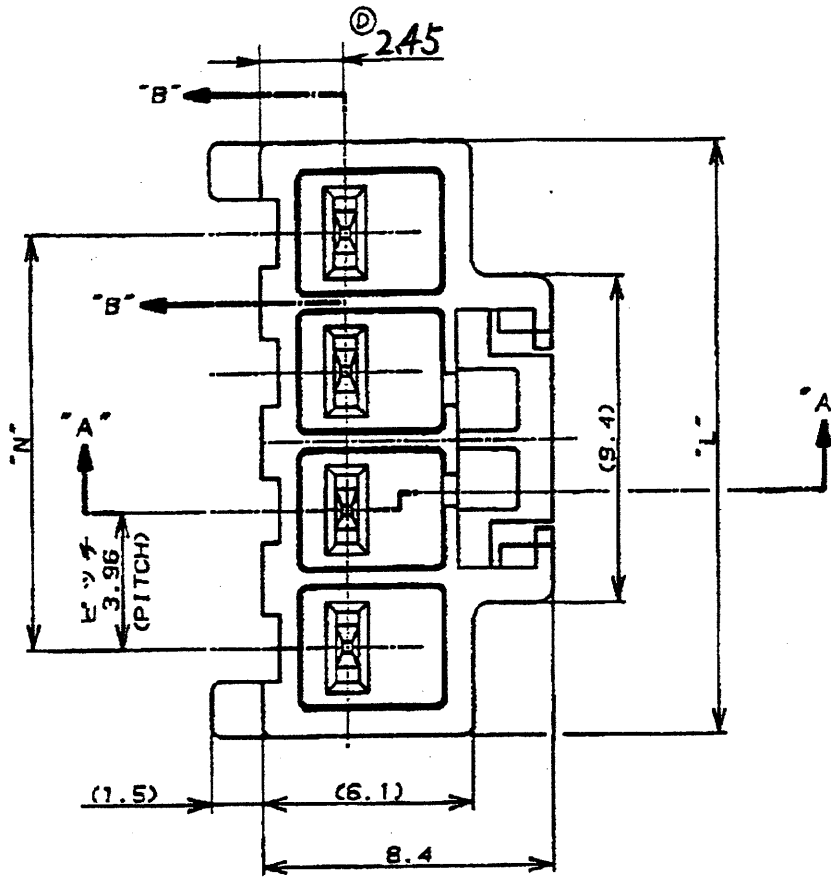
Address: A1208, Overseas Decoration Building, #122 Zhenhua RD., Futian, Shenzhen, China





METRIC

NUMBER C-178487



- 注 1  
 1. 適用製品規格 : 108-5302  
 2. キング形状は、FIG.2参照  
 3. 取付基板寸法
- 
4. 適用基板厚 : 1.6t  
 5. 5極ハウジングの回路 NO.2 と 4 のコンタクト 2本抜き仕様  
 6. 嵌合相手側製品型番

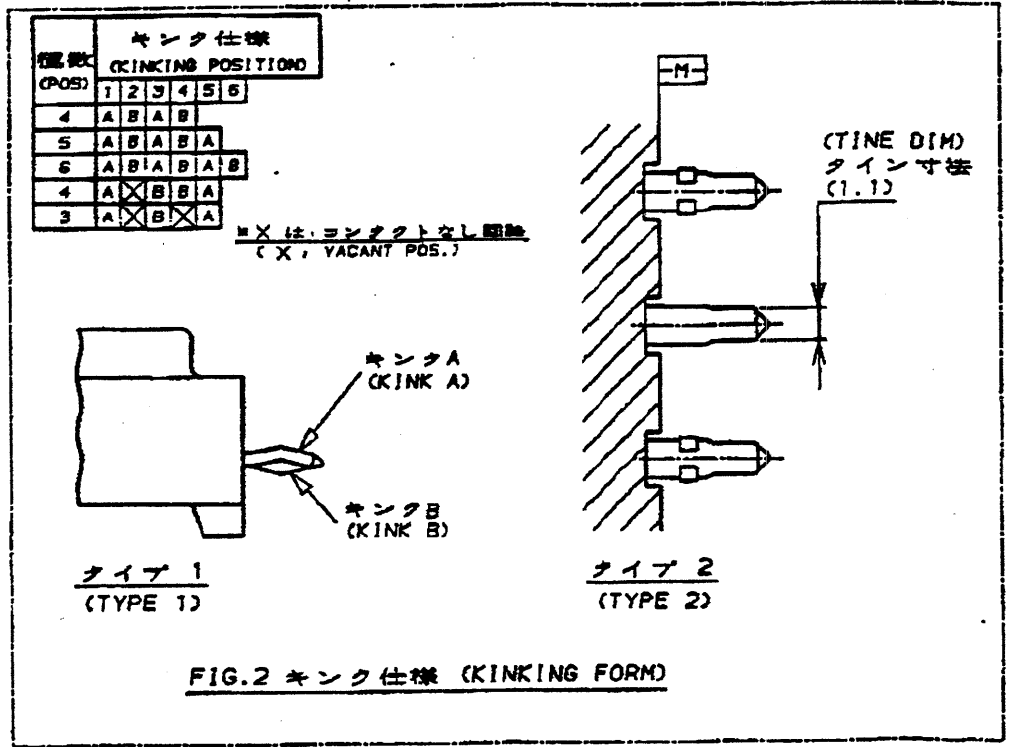
- 表 2 参照  
 5極ハウジングの回路 NO.2 のコンタクト 1本抜き仕様
- NOTES  
 1. PRODUCT SPEC : 108-5302  
 2. KINKING FORM : SEE FIG.2  
 3. P.C.B. LAYOUT : SEE FIG.3  
 4. APPLICABLE P.C.B. THK : 1.6  
 5. CIRCUIT NO.2 AND 4 ARE VACANT OF 5 POS HOUSING  
 6. MATING CONN. P/N  
 SEE TABLE 2  
 REC. CONTACT : 175152-[KAWG#20-#15]  
 175151-[KAWG#26-#22]
- △ CIRCUIT NO.2 IS VACANT OF 5 POS HOUSING

表1  
TABLE1

NO.	名称 (NAME)	材料 (MATERIAL)
①	タブ (TAB)	黄銅 錫めっき (BRASS TIN PLATED)
②	ヘッダーハウジング (HEADER HOUSING)	6/6ナイロンガラス強化(94V-0) (6/6 NYLON GLASS FILLED)

表 2 (TABLE 2)

ヘッダーアッセンブリ P/N (HDR ASS'Y P/N)	極数 (POS.)	嵌合相手 P/N (MATING CONN. P/N)
178487	4	178481
178488	5	178482
178489	5	178483



寸法 (DIMENSION)	"N"	"L"	パンチ加工穴 (PUNCHED HOLE)	ドリル加工穴 (DRILLED HOLE)	タイプ (TYPE)	板厚 (THK)	幅 (WIDTH)	色 (COLOR)	ハウジング色調 (HOUSING COLOR)	コンタクトピッチ (CONTACT PITCH)	コネクタピッチ (CONN. PITCH)	P/N
19.80	24.90	パンチ加工穴 1.50±0.05 ドリル加工穴 1.65±0.05 PUNCHED HOLE 1.50±0.05 DRILLED HOLE 1.65±0.05	タイプ 2 (TYPE 2)	0.64 X 1.10	板厚 幅 (THK) (WIDTH)	黒 (BLACK) 青 (BLUE) 黄 (YELLOW) 赤 (RED) 自然色 (NATURAL)	3.96mm ピッチ (3.96mm PITCH)	6極 (6 POS)	△ 1-178489-9 △ 1- -6 △ 1- -4 △ 1- -2 1- -1 △ 1- -9 △ 1- -6 △ 1- -4 △ 1- -2 178489-1			
15.84	20.94	パンチ加工穴 0.95±0.05 ドリル加工穴 1.10±0.05 PUNCHED HOLE 0.95±0.05 DRILLED HOLE 1.10±0.05	タイプ 1 (TYPE 1)	0.64 X 0.64	板厚 幅 (THK) (WIDTH)	黒 (BLACK) 青 (BLUE) 黄 (YELLOW) 赤 (RED) 自然色 (NATURAL)	3.96mm ピッチ (3.96mm PITCH) 7.92mm ピッチ (7.92mm PITCH)	4極 (4 POS)	△ 4-178488-1			
15.84	20.94	パンチ加工穴 1.50±0.05 ドリル加工穴 1.65±0.05 PUNCHED HOLE 1.50±0.05 DRILLED HOLE 1.65±0.05	タイプ 2 (TYPE 2)	0.64 X 1.10	板厚 幅 (THK) (WIDTH)	黒 (BLACK) 青 (BLUE) 黄 (YELLOW) 赤 (RED) 自然色 (NATURAL)	7.92mm ピッチ (7.92mm PITCH)	3極 (3 POS)	△ 3-178488-9 3- -6 3- -4 3- -2 3- -1 2- -9 2- -6 2- -4 2- -2 2-178488-1			
15.84	20.94	パンチ加工穴 0.95±0.05 ドリル加工穴 1.10±0.05 PUNCHED HOLE 0.95±0.05 DRILLED HOLE 1.10±0.05	タイプ 1 (TYPE 1)	0.64 X 0.64	板厚 幅 (THK) (WIDTH)	黒 (BLACK) 青 (BLUE) 黄 (YELLOW) 赤 (RED) 自然色 (NATURAL)	3.96mm ピッチ (3.96mm PITCH)	5極 (5 POS)	△ 1-178488-9 1- -6 1- -4 1- -2 1- -1 1- -9 1- -6 1- -4 1- -2 178488-1			
15.84	20.94	パンチ加工穴 1.50±0.05 ドリル加工穴 1.65±0.05 PUNCHED HOLE 1.50±0.05 DRILLED HOLE 1.65±0.05	タイプ 2 (TYPE 2)	0.64 X 1.10	板厚 幅 (THK) (WIDTH)	黒 (BLACK) 青 (BLUE) 黄 (YELLOW) 赤 (RED) 自然色 (NATURAL)	3.96mm ピッチ (3.96mm PITCH)	5極 (5 POS)	△ 1-178487-9 1- -6 1- -4 1- -2 1- -1 1- -9 1- -6 1- -4 1- -2 178487-1			
11.88	15.98	パンチ加工穴 1.50±0.05 ドリル加工穴 1.65±0.05 PUNCHED HOLE 1.50±0.05 DRILLED HOLE 1.65±0.05	タイプ 2 (TYPE 2)	0.64 X 1.10	板厚 幅 (THK) (WIDTH)	黒 (BLACK) 青 (BLUE) 黄 (YELLOW) 赤 (RED) 自然色 (NATURAL)	3.96mm ピッチ (3.96mm PITCH)	4極 (4 POS)	△ 1-178487-9 1- -6 1- -4 1- -2 1- -1 1- -9 1- -6 1- -4 1- -2 178487-1			

STC TE Connectivity

AWG 28 DIMENSIONS IN MM. DO NOT SCALE PRINT

PRINT DIST

表 1 参照 (SEE TABLE 1)  
 表 2 参照 (SEE TABLE 2)

DR. Y. NARISAWA 3/8/91  
 DE. M. SHINDO 3/13/91  
 CHK. Y. FUJITA 7/31/91  
 APP. N. ONOUE 6/1/91

REVISION RECORD  
 E2 REVISED PER ECO-11-005030 RK HMR 2/20/91  
 LTR 変更 (REVISION RECORD) DR CHK DATE

AMP UP CONN. 3.96mm PITCH 4-6POS TAB HEADER ASS'Y (V TYPE)  
 SIZE LOC 番号 (NO.)  
 A2 J C-178487

寸法 (SCALE) REV. E2 SHEET 1 OF 1

(CUSTOMER DRAWING) 参考 面