



Chipsmall Limited consists of a professional team with an average of over 10 year of expertise in the distribution of electronic components. Based in Hongkong, we have already established firm and mutual-benefit business relationships with customers from,Europe,America and south Asia,supplying obsolete and hard-to-find components to meet their specific needs.

With the principle of “Quality Parts,Customers Priority,Honest Operation,and Considerate Service”,our business mainly focus on the distribution of electronic components. Line cards we deal with include Microchip,ALPS,ROHM,Xilinx,Pulse,ON,Everlight and Freescale. Main products comprise IC,Modules,Potentiometer,IC Socket,Relay,Connector.Our parts cover such applications as commercial,industrial, and automotives areas.

We are looking forward to setting up business relationship with you and hope to provide you with the best service and solution. Let us make a better world for our industry!



Contact us

Tel: +86-755-8981 8866 Fax: +86-755-8427 6832

Email & Skype: info@chipsmall.com Web: www.chipsmall.com

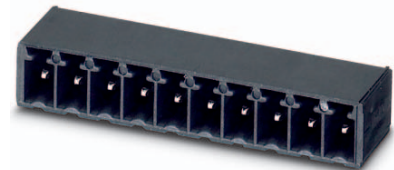
Address: A1208, Overseas Decoration Building, #122 Zhenhua RD., Futian, Shenzhen, China



Order No.: 1788521

Type: MC 1,5/ 3-G-3,5 P26 THR

Header, Reflow/wave soldering



The figure shows a 10-position version of the product

1 Main features



- | | | | |
|-------------------------|---------------------|------------------------|---------------------|
| • No. of pos. | 3 | • Nominal current | 8 A |
| • Nominal cross section | 1.5 mm ² | • Nominal voltage | 160 V |
| • Color | black | • Connection direction | 0 ° |
| • Pitch | 3.5 mm | • Type of packaging | packed in cardboard |
| • Mounting type | THR soldering | | |

2 Your advantages

- ✓ Designed for integration into the SMT soldering process
- ✓ Maximum flexibility when it comes to device design – one header for connectors with different connection technologies



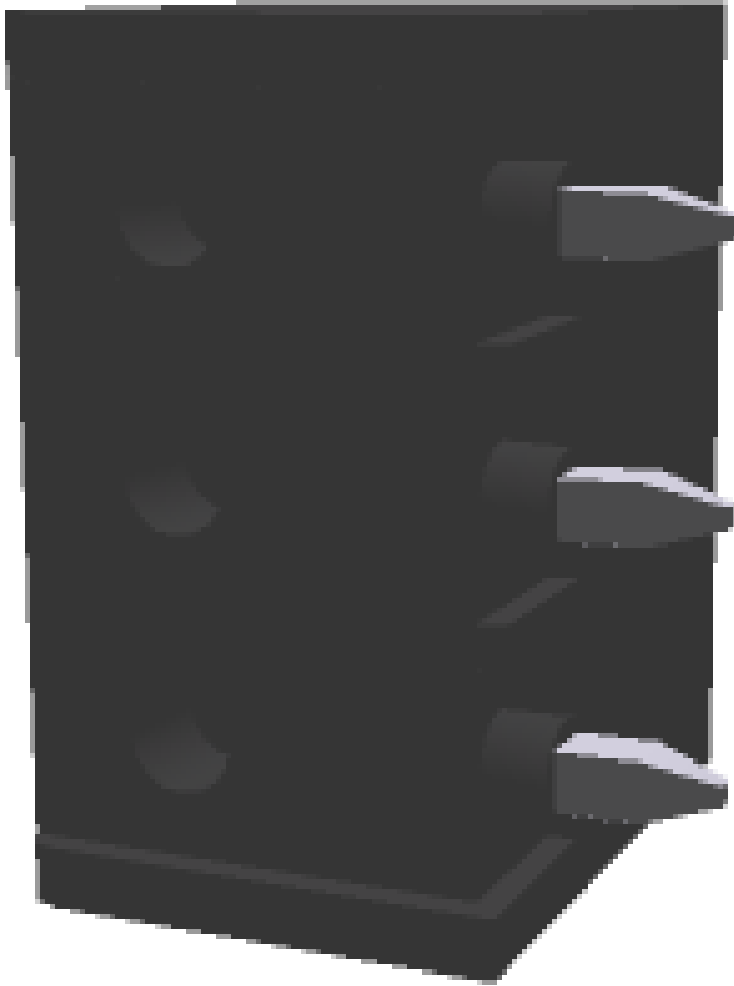
Make sure you always use the latest documentation.
It can be downloaded at: phoenixcontact.net/product/1788521

3 Table of contents

| | | |
|----|---|----|
| 1 | Main features..... | 1 |
| 2 | Your advantages | 1 |
| 3 | Table of contents | 2 |
| 4 | 3D model in PDF can be activated (Acrobat Reader only)..... | 3 |
| 5 | item properties..... | 4 |
| | 5.1 Material data | 4 |
| 6 | Dimensions..... | 4 |
| | 6.1 Dimensions for the product | 4 |
| | 6.2 Dimensions for PCB design..... | 4 |
| 7 | Series drawing..... | 5 |
| 8 | Packaging information | 6 |
| 9 | Application..... | 6 |
| | 9.1 Processing notes | 6 |
| | 9.2 Temperature limit values | 6 |
| 10 | Mechanical tests..... | 7 |
| 11 | Electrical tests | 8 |
| | 11.1 Electrical data | 8 |
| | 11.2 Air and creepage distances | 8 |
| 12 | Current carrying capacity/derating curves | 9 |
| 13 | Environmental and durability tests | 10 |
| | 13.1 Vibration test | 10 |
| 14 | Classification for connectors..... | 10 |
| 15 | Approvals | 10 |
| 16 | Commercial Data..... | 11 |
| 17 | corresponding plugs | 11 |
| 18 | Accessories..... | 11 |
| 19 | Combination tests..... | 12 |

1788521 MC 1,5/ 3-G-3,5 P26 THR

4 3D model in PDF can be activated (Acrobat Reader only)



1788521 MC 1,5/ 3-G-3,5 P26 THR**5 item properties**

| | |
|---------------------|-------------------------|
| Order No. | 1788521 |
| Type | MC 1,5/ 3-G-3,5 P26 THR |
| Type of contact | Male connector |
| Range of articles | MC 1,5/...-G-THR |
| Pitch | 3.5 mm |
| Number of positions | 3 |
| Locking | without |
| Mounting type | THR soldering |
| Pin layout | Linear pinning |

5.1 Material data

| | | |
|--|---|----------------|
| Material of metal parts | | |
| Note | WEEE/RoHS-compliant, whisker-free acc. to IEC 60068-2-82/JEDEC JESD 201 | |
| Contact material | Cu alloy | |
| Surface contact area | Ni 1 µm ... 3 µm , Sn 3 µm ... 5 µm | |
| Soldering area surface | Ni 1 µm ... 3 µm , Sn 3 µm ... 5 µm | |
| Surface characteristics | Tin-plated | |
| Insulating material data | Housing | Housing |
| Insulating material | LCP | |
| CTI according to IEC 60112 | 225 | |
| Flammability rating according to UL 94 | V0 | |
| Color | black (9005) | |

6 Dimensions**6.1 Dimensions for the product**

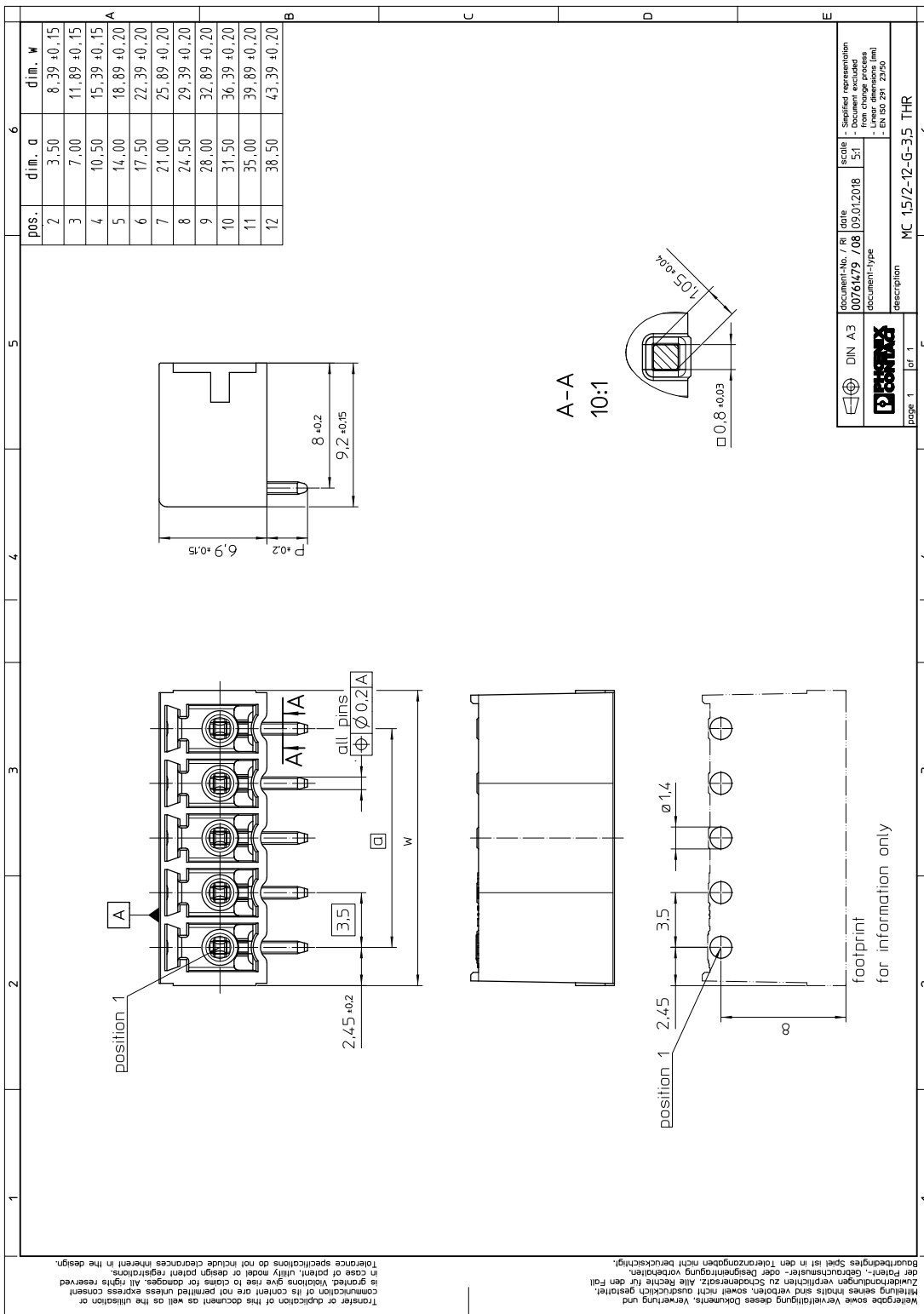
| | |
|-----------------------------|----------|
| Length | 9.2 mm |
| Width | 11.89 mm |
| Height (without solder pin) | 6.9 mm |
| Total height | 9.5 mm |
| Solder pin [P] | 2.6 mm |
| Dimension a | 7 mm |

6.2 Dimensions for PCB design

| | |
|----------------|-----------|
| Hole diameter | 1.4 mm |
| Pin dimensions | 0,8 x 0,8 |

1788521 MC 1,5/ 3-G-3,5 P26 THR

7 Series drawing



1788521 MC 1,5/ 3-G-3,5 P26 THR**8 Packaging information**

| | |
|--------------------|---------------------|
| Type of packaging | packed in cardboard |
| Pieces per package | 50 |

9 Application**9.1 Processing notes**

| | |
|----------------------------------|--|
| Process | Reflow/wave soldering |
| Specification | Following IPC/JEDEC J-STD-020E:2014-12 |
| Specification | Following IEC 61760-1:2006-04 |
| Specification | Following IEC 60068-2-58:2015-03 |
| Moisture Sensitive Level | MSL 1 |
| Classification temperature T_c | max. 260 °C |
| Solder cycles in the reflow | 3 |
| swash circumference | see dimensional drawing |

9.2 Temperature limit values

| | |
|---|--|
| Ambient temperature (storage/transport) | -40 °C ... 70 °C |
| Ambient temperature (assembly) | -5 °C ... 100 °C |
| Ambient temperature (operation) | -40 °C (dependent on the derating curve) |

1788521 MC 1,5/ 3-G-3,5 P26 THR**10 Mechanical tests**

| Mechanical test group A | |
|-------------------------------------|------------------------|
| Specification | IEC 61984:2008-10 |
| Visual examination | Test passed |
| Specification | IEC 60512-1-1:2002-02 |
| Dimensional test | Test passed |
| Specification | IEC 60512-1-2:2002-02 |
| Resistance of marking | Test passed |
| Specification | IEC 60068-2-70:1995-12 |
| Insertion and withdrawal force | Test passed |
| Specification | IEC 60512-13-2:2006-02 |
| No. of cycles | 25 |
| Insertion strength per pos. approx. | 8 N |
| Withdraw strength per pos. approx. | 5 N |
| Polarization and coding | Test passed |
| Specification | IEC 60512-13-5:2006-02 |
| Test force | 20 N |
| Contact retention in insert | Test passed |
| Specification | IEC 60512-15-1:2008-05 |
| Test force per pos. | 20 N |

1788521 MC 1,5/ 3-G-3,5 P26 THR**11 Electrical tests****11.1 Electrical data**

| | |
|---|---------------------------|
| Rated current / conductor cross section | 8 A / 1.5 mm ² |
| Rated insulation voltage (III/2) | 160 V |
| Rated surge voltage (III/2) | 2.5 kV |
| Contact resistance | 1.3 mΩ |
| Degree of pollution | 2 |

11.2 Air and creepage distances

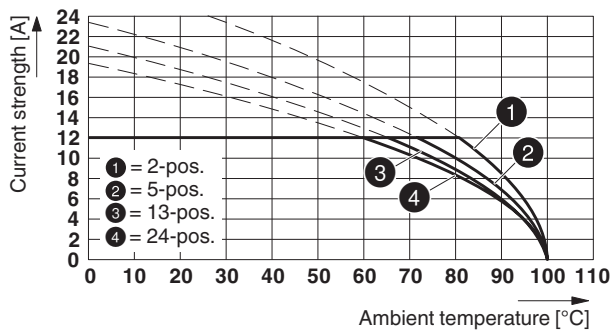
| | | | |
|---|---------------------|--------|--------|
| Component | Header | | |
| Specification | IEC 60664-1:2007-04 | | |
| Mains type | unearthed mains | | |
| Insulating material group | IIIa | | |
| Comparative tracking index (IEC 60112:2003-01) | CTI 225 | | |
| Rated insulation voltage | 160 V | 160 V | 250 V |
| Rated surge voltage | 2.5 kV | 2.5 kV | 2.5 kV |
| Degree of pollution | 3 | 2 | 2 |
| Overvoltage category | III | III | II |
| Minimum clearance case A (inhomogeneous field) | 1.5 mm | 1.5 mm | 1.5 mm |
| Minimum value of the creepage path requirement in acc. with table | 2.5 mm | 1.6 mm | 2.5 mm |

1788521 MC 1,5/ 3-G-3,5 P26 THR

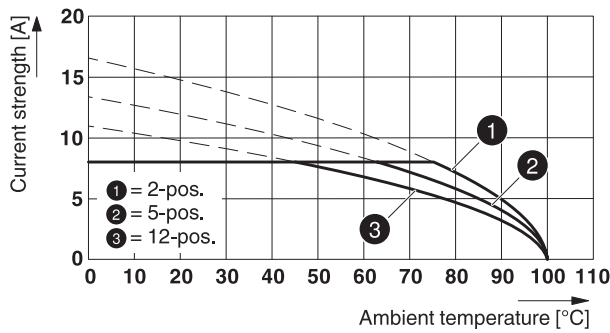
12 Current carrying capacity/derating curves

| | |
|-------------------------|---|
| Specification | IEC 61984:2008-10 |
| Note | Representation based on IEC 60512-5-2:2002-02 |
| Reduction factor | 0.8 |
| Number of positions | See diagram |
| Conductor cross section | 1.5 mm ² |
| Note | |

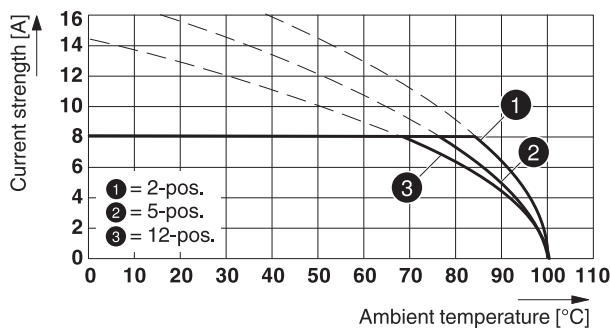
Type: MC 1,5/...-ST(F)-3,5 with MC 1,5/...-G(F)-3,5 P... THR



Type: MCVR 1,5/...-ST-3,5 with MC 1,5/...-G-3,5 P...THR



Type: FMC 1,5/...-ST-3,5 with MC 1,5/...-G-3,5 P26 THR



1788521 MC 1,5/ 3-G-3,5 P26 THR**13 Environmental and durability tests****13.1 Vibration test**

| | |
|------------------------|------------------------|
| Specification | IEC 60068-2-6:2007-12 |
| Result | Test passed |
| Frequency | 10 - 150 - 10 Hz |
| Sweep speed | 1 octave/min |
| Amplitude | 0.35 mm (10 - 60.1 Hz) |
| Acceleration | 5 g (60.1 - 150 Hz) |
| Test duration per axis | 2.5 h |
| Test directions | X-, Y- and Z-axis |

14 Classification for connectors

| | |
|-----------------------------------|--|
| Specification | IEC 61984:2008-10 |
| Main features | Connectors without switching capacity (COC) |
| Construction form | Fixed connectors |
| Strain relief elements | without strain relief |
| Protection against electric shock | Not encapsulated - touch-proof when inserted |
| Protection class | |
| Protective conductor | without PE |
| Lock | no |

15 Approvals**VDE Gutachten mit Fertigungsüberwachung **

| | | | | |
|----------------------------|-------|--|--|--|
| mm ² /AWG/kcmil | | | | |
| Voltage | 160 V | | | |
| Current | 8 A | | | |

cULus Recognized 

| | | | | |
|----------------------------|-------|-------|--|--|
| Use group | B | D | | |
| mm ² /AWG/kcmil | | | | |
| Voltage | 300 V | 300 V | | |
| Current | 8 A | 8 A | | |

IECEE CB Scheme 

| | | | | |
|----------------------------|-------|--|--|--|
| mm ² /AWG/kcmil | | | | |
| Voltage | 160 V | | | |
| Current | 8 A | | | |

EAC 

1788521 MC 1,5/ 3-G-3,5 P26 THR**16 Commercial Data**

| | |
|--------------------|--|
| Order No. | 1788521 |
| Type | MC 1,5/ 3-G-3,5 P26 THR |
| Pieces per package | 50 |
| Net weight | 0.918 g |
| GTIN | 4046356611657 |
| | Information that applies locally, see link on page 1 |
| Country of origin | Information that applies locally, see link on page 1 |

17 corresponding plugs

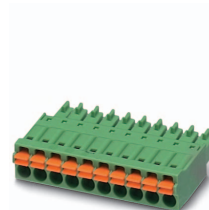
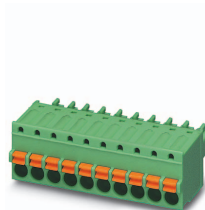
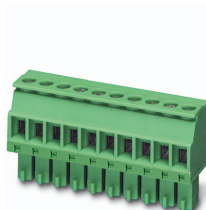
| Order No. | Type |
|-----------|-------------------------|
| 1769061 | MC 1,5/ 3-ST-3,5 GY7035 |
| 1772621 | TFMC 1,5/ 3-ST-3,5 |
| 1840379 | MC 1,5/ 3-ST-3,5 |
| 1862865 | MCVW 1,5/ 3-ST-3,5 |
| 1863165 | MCVR 1,5/ 3-ST-3,5 |
| 1939921 | FK-MCP 1,5/ 3-ST-3,5 |
| 1952270 | FMC 1,5/ 3-ST-3,5 |

18 Accessories

| Description | Order No. | Type |
|-------------|-----------|-----------------------|
| | 1841161 | MC 1,5/10-LWL 1,5-3,5 |
| | 1841187 | MC 1,5/10-LWL 2,3-3,5 |
| | 1841200 | MC 1,5/10-LWL 4-3,5 |

1788521 MC 1,5/ 3-G-3,5 P26 THR

19 Combination tests

**MC 1,5/..-G-THR****MC 1,5/..-ST****MCVR 1,5/..-ST****FK-MCP 1,5/..-ST****FMC 1,5/..-ST****Mechanical tests (A)**

| | | | | |
|---|-------------------|-------------------|--------------------|-------------------|
| Insertion/withdrawal force per position | approx. 8 N / 5 N | approx. 8 N / 6 N | approx. 12 N / 9 N | approx. 8 N / 6 N |
| Polarization when inserted Requirement >20 N | Test passed | Test passed | Test passed | Test passed |
| Contact holder in insert Requirements >20 N | Test passed | Test passed | Test passed | Test passed |

Durability tests (B)

| | | | | |
|--|---------|----------|----------|---------|
| Contact resistance R ₁ | 1.3 mΩ | 3.6 mΩ | 1.6 mΩ | 2 mΩ |
| Insertion/withdrawal cycles | 25 | 25 | 25 | |
| Contact resistance R ₂ | 1.3 mΩ | 3.7 mΩ | 1.6 mΩ | |
| Rated impulse voltage at sea level Voltage waveform ≥ (1.2/50 μs) | 2.95 kV | 2.95 kV | 2.95 kV | 2.95 kV |
| Power-frequency withstand voltage Voltage waveform ≥ (50/60 Hz) | 1.39 kV | 1.39 kV | 1.39 kV | 1.39 kV |
| Insulation resistance Requirements > 5 MΩ | > 4 TΩ | > 0.5 TΩ | > 0.2 TΩ | |

Thermal tests (C)

| | | | | |
|--|---------------------|---------------------|---------------------|---------------------|
| Tested number of positions | 20 | 12 | 12 | 12 |
| Tested conductor cross section | 1.5 mm ² | 1.5 mm ² | 1.5 mm ² | 0.5 mm ² |
| Test current | 8 A | 8 A | 8 A | 8 A |
| Upper limiting temperature Requirements < 100°C | Test passed | Test passed | Test passed | Test passed |

Climatic tests (D)

| | | | | |
|--|---|---|---|---|
| Test sequence 1: low temperature storage | -40 °C/2 h | -40 °C/2 h | -40 °C/2 h | -40 °C/2 h |
| Test sequence 2: heat storage | 100 °C/168 h | 100 °C/168 h | 100 °C/168 h | 100 °C/168 h |
| Test sequence 3: noxious gas storage (ISO 6988) | 0.2 dm ³ SO ₂ on 300 dm ³ / 40 °C/1 cycle | 0.2 dm ³ SO ₂ on 300 dm ³ / 40 °C/1 cycle | 0.2 dm ³ SO ₂ on 300 dm ³ / 40 °C/1 cycle | 0.2 dm ³ SO ₂ on 300 dm ³ / 40 °C/1 cycle |
| Rated impulse voltage at sea level Voltage waveform ≥ (1.2/50 μs) | 2.95 kV | 2.95 kV | 2.95 kV | 2.95 kV |
| Power-frequency withstand voltage Voltage waveform ≥ (50/60 Hz) | 1.39 kV | 1.39 kV | 1.39 kV | 1.39 kV |

Environmental and endurance tests (E)

| | | | | |
|----------------------|--|--|--|--|
| Specification | IEC 61984:2008-10 | IEC 61984:2008-10 | IEC 61984:2008-10 | |
| Degree of protection | Finger safety with IP20 test finger | Finger safety with IP20 test finger | Finger safety with IP20 test finger | Finger safety with IP20 test finger |