



Chipsmall Limited consists of a professional team with an average of over 10 year of expertise in the distribution of electronic components. Based in Hongkong, we have already established firm and mutual-benefit business relationships with customers from,Europe,America and south Asia,supplying obsolete and hard-to-find components to meet their specific needs.

With the principle of "Quality Parts,Customers Priority,Honest Operation,and Considerate Service",our business mainly focus on the distribution of electronic components. Line cards we deal with include Microchip,ALPS,ROHM,Xilinx,Pulse,ON,Everlight and Freescale. Main products comprise IC,Modules,Potentiometer,IC Socket,Relay,Connector.Our parts cover such applications as commercial,industrial, and automotives areas.

We are looking forward to setting up business relationship with you and hope to provide you with the best service and solution. Let us make a better world for our industry!



Contact us

Tel: +86-755-8981 8866 Fax: +86-755-8427 6832

Email & Skype: info@chipsmall.com Web: www.chipsmall.com

Address: A1208, Overseas Decoration Building, #122 Zhenhua RD., Futian, Shenzhen, China



Bolt-type screw terminals WF 8/2BZ

Weidmüller Interface GmbH & Co. KG
 Klingenbergstraße 16
 D-32758 Detmold
 Germany
 Fon: +49 5231 14-0
 Fax: +49 5231 14-292083
 www.weidmueller.com



The comprehensive range of bolt-type screw terminals offers secure connections for all power transmission applications.

Connections from 10 mm² to 300 mm² are possible. The conductors are attached to the terminals using crimped cable lugs and each connection secured by tightening the hexagonal nut.

Bolt-type screw terminals with threads from M5 to M16 can be used depending on the conductor cross-section. A low voltage drop and the use of a self-extinguishing material with a V-0 (UL 94) flammability rating guarantee maximum safety.

All bolt-type screw terminals have been tested according to international railway standards (EN 50343, EN 50155, NF F61-017, NF16-101; Ria 20) and comply with the requirements of those standards.

General ordering data

Order No.	1789780000
Type	WF 8/2BZ
Version	Bolt-type screw terminals, Feed-through terminal, Rated cross-section: 50 mm ² , Threaded stud connection
GTIN (EAN)	4032248251148
Qty.	25 pc(s).

Bolt-type screw terminals
WF 8/2BZ

Weidmüller Interface GmbH & Co. KG
 Klingenbergstraße 16
 D-32758 Detmold
 Germany
 Fon: +49 5231 14-0
 Fax: +49 5231 14-292083
 www.weidmueller.com

Technical data**Dimensions and weights**

Length	67 mm	Width	22.8 mm
Height	63.5 mm	Height of lowest version	65 mm
Net weight	121.554 g		

Temperatures

Operating temperature		Storage temperature	
Continuous operating temp., min.	-50 °C	Continuous operating temp., max.	120 °C

Additional technical data

Explosion-tested version	No	Open sides	Open
Type of mounting	Snap-on		

Clampable wires (rated connection)

Type of connection	Threaded stud connection	Clamping range, rated connection, min.	2.5 mm ²
Clamping range, rated connection, max.	50 mm ²	Tightening torque, min.	6 Nm
Tightening torque, max.	12 Nm	Wire connection cross section, finely stranded, max.	50 mm ²
Wire connection cross-section, finely stranded, min.	2.5 mm ²		

Rated data

Rated cross-section	50 mm ²	Rated voltage	1,000 V
Rated impulse withstand voltage	8 kV	Rated current	150 A
Current at maximum wires	150 A	Pollution severity	3

Stud connection

Tightening torque, min.	6 Nm	Tightening torque, max.	12 Nm
Stud size for spade connection	M 8	Cable lug to DIN 46234	2.5...50 mm ²
Cable lug to DIN 46235	6...35 mm ²	Clamping range, bolted connection , min.	2.5 mm ²
Clamping range, bolted connection , max.	50 mm ²		

UL ratings data

Certificate No. (cURus)	E60693VOL1SEC43	Conductor size Factory wiring max. (cURus)	0 AWG
Current size C (cURus)	150 A	Voltage size C (cURus)	1000 V
Certificate No. (UR)	E60693VOL1SEC43	Voltage size C (UR)	1000 V
Current size C (UR)	150 A	Conductor size Factory wiring max. (UR)	0 AWG
Conductor size Factory wiring min. (UR)	14 AWG	Conductor size Field wiring max. (UR)	0 AWG

Material data

Material	Wemid	Colour	Dark Beige
UL 94 flammability rating	V-0		

**Bolt-type screw terminals
WF 8/2BZ**

Weidmüller Interface GmbH & Co. KG
 Klingenbergstraße 16
 D-32758 Detmold
 Germany
 Fon: +49 5231 14-0
 Fax: +49 5231 14-292083
 www.weidmueller.com

Technical data

System specifications

Product family	Bolt-type screw terminals	Type of connection	Threaded stud connection
Number of levels	1	No. of clamping points per level	2
Levels cross-connected internally	No	Mounting rail	TS 35

Classifications

ETIM 3.0	EC002020	UNSPSC	30-21-18-01
eClass 6.2	27-14-11-20	eClass 7.1	27-14-11-20

Product information

Descriptive text ordering data	1000 V UL and CSA for usage groups B and C: can be used with isolating DIN rails and when using WTW-type partitions.
Descriptive text accessories	With WTW...2300 made from epoxy resin, rated current 2300 V according to prelim. EN 50124 pt 1

Approvals

Approvals



ROHS Conform

Data sheet...

**Bolt-type screw terminals
WF 8/2BZ**

Weidmüller Interface GmbH & Co. KG
Klingenbergstraße 16
D-32758 Detmold
Germany
Fon: +49 5231 14-0
Fax: +49 5231 14-292083
www.weidmueller.com

Drawings



**Bolt-type screw terminals
WF 8/2BZ**

Weidmüller Interface GmbH & Co. KG
 Klingenbergstraße 16
 D-32758 Detmold
 Germany
 Fon: +49 5231 14-0
 Fax: +49 5231 14-292083
 www.weidmueller.com

Accessories
WQL WF


The comprehensive range of bolt-type screw terminals offers secure connections for all power transmission applications. Connections from 10 mm² to 300 mm² are possible. The conductors are attached to the terminals using crimped cable lugs and each connection secured by tightening the hexagonal nut. Bolt-type screw terminals with threads from M5 to M16 can be used depending on the conductor cross-section. A low voltage drop and the use of a self-extinguishing material with a V-0 (UL 94) flammability rating guarantee maximum safety. All bolt-type screw terminals have been tested according to international railway standards (EN 50343, EN 50155, NF F6 1-017, NF16-101; Ria 20) and comply with the requirements of those standards.

General ordering data

Order No.	Type	Version	GTIN (EAN)	Qty.
1781000000	WQL 3 WF8	Bolt-type screw terminals, Accessories, Cross-connector, No. of poles: 3	40322482412005	5 pc(s).
1780990000	WQL 2 WF8	Bolt-type screw terminals, Accessories, Cross-connector, No. of poles: 2	40322482194145	5 pc(s).

WF shrouding cover


The comprehensive range of bolt-type screw terminals offers secure connections for all power transmission applications. Connections from 10 mm² to 300 mm² are possible. The conductors are attached to the terminals using crimped cable lugs and each connection secured by tightening the hexagonal nut. Bolt-type screw terminals with threads from M5 to M16 can be used depending on the conductor cross-section. A low voltage drop and the use of a self-extinguishing material with a V-0 (UL 94) flammability rating guarantee maximum safety. All bolt-type screw terminals have been tested according to international railway standards (EN 50343, EN 50155, NF F6 1-017, NF16-101; Ria 20) and comply with the requirements of those standards.

General ordering data

Order No.	Type	Version	GTIN (EAN)	Qty.
1780940000	ADP WF10/WF12	Bolt-type screw terminals, Accessories, Transparent	40322482412551	1 m

**Bolt-type screw terminals
WF 8/2BZ**

Weidmüller Interface GmbH & Co. KG
 Klingenbergstraße 16
 D-32758 Detmold
 Germany
 Fon: +49 5231 14-0
 Fax: +49 5231 14-292083
 www.weidmueller.com

Accessories

[1781050000](#) HA ADP WF6/WF10

Bolt-type screw terminals, 4032248241231 10 pc(s).
 Accessories, Dark Beige,
 2.2 mm

Blank



WS markers are the perfect match for W series-connectors. Thanks to their system compatibility, the WS tags can also be used with the I-series and the Z-series. The large marking surfaces do not only permit long character strings but also multi-line text.
WS markers are ideal for labels with long, customised character strings. Thanks to the proven MultiCard format, printing with laser printer , PrintJet ADVANCED , plotter or MC-Mobilo is possible.

- Can be fitted in strips or singly
- Markers in proven MultiCard format

General ordering data

Order No.	Type	Version	GTIN (EAN)	Qty.
1609880000	WS 15/5 MC NE WS	Terminal markers, MultiCard, 15 x 5 mm, Polyamide, Colour: White	4008190203504	480 pc(s).

Blank



WS markers are the perfect match for W series-connectors. Thanks to their system compatibility, the WS tags can also be used with the I-series and the Z-series. The large marking surfaces do not only permit long character strings but also multi-line text.
WS markers are ideal for labels with long, customised character strings. Thanks to the proven MultiCard format, printing with laser printer , PrintJet ADVANCED , plotter or MC-Mobilo is possible.

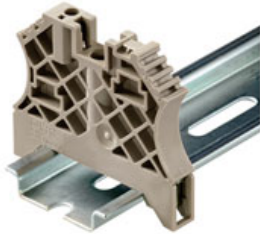
- Can be fitted in strips or singly
- Markers in proven MultiCard format

General ordering data

Order No.	Type	Version	GTIN (EAN)	Qty.
1635000000	WS 10/5 MC NE WS	Terminal markers, MultiCard, 10 x 5 mm, Polyamide 66, Colour: White	4008190261948	720 pc(s).

**Bolt-type screw terminals
WF 8/2BZ**

Weidmüller Interface GmbH & Co. KG
 Klingenbergstraße 16
 D-32758 Detmold
 Germany
 Fon: +49 5231 14-0
 Fax: +49 5231 14-292083
 www.weidmueller.com

Accessories
for TS 35 terminal rail


Weidmüller's range of products includes end brackets that guarantee a permanent, reliable mounting on the terminal rail and prevent sliding. Versions with and without screws are available. The end brackets include marking options, also for group markers, and also a test plug holder.

General ordering data

Order No.	Type	Version	GTIN (EAN)	Qty.
106120000	WEW 35/2	Accessories, End bracket	4008190030230	100 pc(s).

WTW WF


The comprehensive range of bolt-type screw terminals offers secure connections for all power transmission applications. Connections from 10 mm² to 300 mm² are possible. The conductors are attached to the terminals using crimped cable lugs and each connection secured by tightening the hexagonal nut. Bolt-type screw terminals with threads from M5 to M16 can be used depending on the conductor cross-section. A low voltage drop and the use of a self-extinguishing material with a V-0 (UL 94) flammability rating guarantee maximum safety. All bolt-type screw terminals have been tested according to international railway standards (EN 50343, EN 50155, NF F6 1-017, NF16-101; Ria 20) and comply with the requirements of those standards.

General ordering data

Order No.	Type	Version	GTIN (EAN)	Qty.
1780910000	WTW WF8 2300	Bolt-type screw terminals, Accessories, Partition plate, Grey, 3 mm	4032248241132	20 pc(s).
1780890000	WTW WF10/WF12	Bolt-type screw terminals, Accessories, Partition plate, Dark Beige, 3 mm	4032248219391	20 pc(s).