



Chipsmall Limited consists of a professional team with an average of over 10 year of expertise in the distribution of electronic components. Based in Hongkong, we have already established firm and mutual-benefit business relationships with customers from,Europe,America and south Asia,supplying obsolete and hard-to-find components to meet their specific needs.

With the principle of "Quality Parts,Customers Priority,Honest Operation,and Considerate Service",our business mainly focus on the distribution of electronic components. Line cards we deal with include Microchip,ALPS,ROHM,Xilinx,Pulse,ON,Everlight and Freescale. Main products comprise IC,Modules,Potentiometer,IC Socket,Relay,Connector.Our parts cover such applications as commercial,industrial, and automotives areas.

We are looking forward to setting up business relationship with you and hope to provide you with the best service and solution. Let us make a better world for our industry!



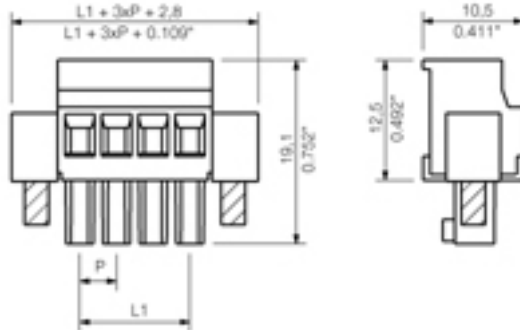
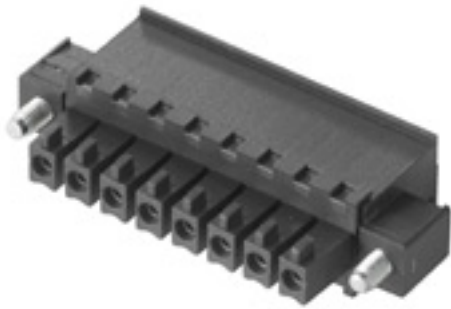
## Contact us

Tel: +86-755-8981 8866 Fax: +86-755-8427 6832

Email & Skype: info@chipsmall.com Web: www.chipsmall.com

Address: A1208, Overseas Decoration Building, #122 Zhenhua RD., Futian, Shenzhen, China





#### General ordering data

Order No.	1799190000
Part designation	BCZ 3.81/4/270F SN GN
Version	PCB plug-in connector, Female connectors, Clamping yoke connection, Clamping range, max.: 1.5 mm <sup>2</sup> , Pitch: 3.81 mm, No. of poles: 4, 270°, Box
EAN	4032248244089
Qty.	50 pc(s).

#### System parameters

Conductor connection system	Clamping yoke connection
Outgoing direction of conductor	270°
Pitch	3.81 mm
Pitch in inch	0.15 inch
No. of poles	4
No. of rows	1
Screwdriver blade	0.4 x 2.5
Screwdriver blade standard	DIN 5264
Tightening torque, min.	0.2
Tightening torque, max.	0.25 Nm
Clamping screw	M 2
Stripping length	7 mm
L1 in mm	11.43 mm
L1 in inch	0.45 inch
Electric shock protection to DIN VDE 0470	IP 20
Electric shock protection to DIN VDE 0470	Safe from finger touch

#### Material data

Insulating material	PA GF
Colour	Pale green
colour chart	Similar to RAL 6021
Insulating material group	II
Flammability class UL 94	V-0
CTI	>= 475

#### Material data

Contact base material	Copper alloy
Contact surface	tinned

#### Connectable conductors

Clamping range, min.	0.08 mm <sup>2</sup>
Clamping range, max.	1.5 mm <sup>2</sup>
AWG, min.	28
AWG, max.	16
Solid, min. H05(07) V-U	0.2 mm <sup>2</sup>
Solid, max. H05(07) V-U	1.5 mm <sup>2</sup>
Flexible, min. H05(07) V-K	0.2 mm <sup>2</sup>
Flexible, max. H05(07) V-K	1.5 mm <sup>2</sup>
With wire end ferrule, acc. to DIN 46 228/1, min.	0.2 mm <sup>2</sup>
With wire end ferrule, acc. to DIN 46 228/1, max.	1.5 mm <sup>2</sup>
w. plastic collar ferrule, DIN 46228 pt 4, min.	0.2 mm <sup>2</sup>
w. plastic collar ferrule, DIN 46228 pt 4, max.	1.5 mm <sup>2</sup>
Gauge to EN 60999 a x b; ø	2.4 mm x 1.5 mm ; 2.4 mm

#### DIN IEC rating data

Rated current, min. No. pins (Tu=20°C)	17.5 A
Rated current, max. No. pins (Tu=20°C)	15.9 A
Rated current, min. No. pins (Tu=40°C)	17.5 A
Rated current, max. No. pins (Tu=40°C)	14.1 A
Rated voltage for overvoltage class/pollution severity II/2	320 V
Rated voltage for overvoltage class/pollution severity III/2	160 V
Rated voltage for overvoltage class/pollution severity III/3	160 V
Rated impulse withstand voltage for overvoltage class/pollution severity II/2	2.5 kV
Rated impulse withstand voltage for overvoltage class/pollution severity III/2	2.5 kV
Rated impulse withstand voltage for overvoltage class/pollution severity III/3	2.5 kV
Short-time withstand current resistance	3 x 1s with 76 A

#### CSA rating data

Rated voltage (Use group D)	300 V
Rated current (Use group D)	10 A
AWG conductor (field wiring), min.	28
AWG conductor (field wiring), max.	16

#### UL 1059 rating data

Rated voltage (Use group D)	300 V
Rated current (Use group D)	10 A
AWG conductor, min.	28
AWG conductor, max.	16



## Approvals

Approvals institutes



## Classifications

ETIM 2.0	NK
ETIM 3.0	EC001284
eClass 4.1	27-26-07-01
eClass 5.0	27-26-07-01
eClass 5.1	27-26-07-04

## Similar products

Order No.	Part designation	Version
1940460000	BCZ 3.81/2/270F SN OR	PCB plug-in connector, Female connectors, Clamping yoke connection, Clamping range, max.: 1.5 mm <sup>2</sup> , Pitch: 3.81 mm, No. of poles: 2, 270°, Box
1799100000	BCZ 3.81/2/270F SN SW	PCB plug-in connector, Female connectors, Clamping yoke connection, Clamping range, max.: 1.5 mm <sup>2</sup> , Pitch: 3.81 mm, No. of poles: 2, 270°, Box
1799170000	BCZ 3.81/2/270F SN GN	PCB plug-in connector, Female connectors, Clamping yoke connection, Clamping range, max.: 1.5 mm <sup>2</sup> , Pitch: 3.81 mm, No. of poles: 2, 270°, Box
1940470000	BCZ 3.81/3/270F SN OR	PCB plug-in connector, Female connectors, Clamping yoke connection, Clamping range, max.: 1.5 mm <sup>2</sup> , Pitch: 3.81 mm, No. of poles: 3, 270°, Box
1798180000	BCZ 3.81/3/270F SN SW	PCB plug-in connector, Female connectors, Clamping yoke connection, Clamping range, max.: 1.5 mm <sup>2</sup> , Pitch: 3.81 mm, No. of poles: 3, 270°, Box
1799180000	BCZ 3.81/3/270F SN GN	PCB plug-in connector, Female connectors, Clamping yoke connection, Clamping range, max.: 1.5 mm <sup>2</sup> , Pitch: 3.81 mm, No. of poles: 3, 270°, Box
1940480000	BCZ 3.81/4/270F SN OR	PCB plug-in connector, Female connectors, Clamping yoke connection, Clamping range, max.: 1.5 mm <sup>2</sup> , Pitch: 3.81 mm, No. of poles: 4, 270°, Box
1799110000	BCZ 3.81/4/270F SN SW	PCB plug-in connector, Female connectors, Clamping yoke connection, Clamping range, max.: 1.5 mm <sup>2</sup> , Pitch: 3.81 mm, No. of poles: 4, 270°, Box
1940490000	BCZ 3.81/5/270F SN OR	PCB plug-in connector, Female connectors, Clamping yoke connection, Clamping range, max.: 1.5 mm <sup>2</sup> , Pitch: 3.81 mm, No. of poles: 5, 270°, Box
1799120000	BCZ 3.81/5/270F SN SW	PCB plug-in connector, Female connectors, Clamping yoke connection, Clamping range, max.: 1.5 mm <sup>2</sup> , Pitch: 3.81 mm, No. of poles: 5, 270°, Box
1799200000	BCZ 3.81/5/270F SN GN	PCB plug-in connector, Female connectors, Clamping yoke connection, Clamping range, max.: 1.5 mm <sup>2</sup> , Pitch: 3.81 mm, No. of poles: 5, 270°, Box

1940500000	BCZ 3.81/6/270F SN OR	PCB plug-in connector, Female connectors, Clamping yoke connection, Clamping range, max.: 1.5 mm <sup>2</sup> , Pitch: 3.81 mm, No. of poles: 6, 270°, Box
1799130000	BCZ 3.81/6/270F SN SW	PCB plug-in connector, Female connectors, Clamping yoke connection, Clamping range, max.: 1.5 mm <sup>2</sup> , Pitch: 3.81 mm, No. of poles: 6, 270°, Box
1799210000	BCZ 3.81/6/270F SN GN	PCB plug-in connector, Female connectors, Clamping yoke connection, Clamping range, max.: 1.5 mm <sup>2</sup> , Pitch: 3.81 mm, No. of poles: 6, 270°, Box
1940510000	BCZ 3.81/7/270F SN OR	PCB plug-in connector, Female connectors, Clamping yoke connection, Clamping range, max.: 1.5 mm <sup>2</sup> , Pitch: 3.81 mm, No. of poles: 7, 270°, Box
1940670000	BCZ 3.81/7/270F SN SW	PCB plug-in connector, Female connectors, Clamping yoke connection, Clamping range, max.: 1.5 mm <sup>2</sup> , Pitch: 3.81 mm, No. of poles: 7, 270°, Box
1940610000	BCZ 3.81/7/270F SN GN	PCB plug-in connector, Female connectors, Clamping yoke connection, Clamping range, max.: 1.5 mm <sup>2</sup> , Pitch: 3.81 mm, No. of poles: 7, 270°, Box
1940520000	BCZ 3.81/8/270F SN OR	PCB plug-in connector, Female connectors, Clamping yoke connection, Clamping range, max.: 1.5 mm <sup>2</sup> , Pitch: 3.81 mm, No. of poles: 8, 270°, Box
1798190000	BCZ 3.81/8/270F SN SW	PCB plug-in connector, Female connectors, Clamping yoke connection, Clamping range, max.: 1.5 mm <sup>2</sup> , Pitch: 3.81 mm, No. of poles: 8, 270°, Box
1799220000	BCZ 3.81/8/270F SN GN	PCB plug-in connector, Female connectors, Clamping yoke connection, Clamping range, max.: 1.5 mm <sup>2</sup> , Pitch: 3.81 mm, No. of poles: 8, 270°, Box
1940530000	BCZ 3.81/9/270F SN OR	PCB plug-in connector, Female connectors, Clamping yoke connection, Clamping range, max.: 1.5 mm <sup>2</sup> , Pitch: 3.81 mm, No. of poles: 9, 270°, Box
1940680000	BCZ 3.81/9/270F SN SW	PCB plug-in connector, Female connectors, Clamping yoke connection, Clamping range, max.: 1.5 mm <sup>2</sup> , Pitch: 3.81 mm, No. of poles: 9, 270°, Box
1940620000	BCZ 3.81/9/270F SN GN	PCB plug-in connector, Female connectors, Clamping yoke connection, Clamping range, max.: 1.5 mm <sup>2</sup> , Pitch: 3.81 mm, No. of poles: 9, 270°, Box
1940540000	BCZ 3.81/10/270F SN OR	PCB plug-in connector, Female connectors, Clamping yoke connection, Clamping range, max.: 1.5 mm <sup>2</sup> , Pitch: 3.81 mm, No. of poles: 10, 270°, Box
1799140000	BCZ 3.81/10/270F SN SW	PCB plug-in connector, Female connectors, Clamping yoke connection, Clamping range, max.: 1.5 mm <sup>2</sup> , Pitch: 3.81 mm, No. of poles: 10, 270°, Box
1799230000	BCZ 3.81/10/270F SN GN	PCB plug-in connector, Female connectors, Clamping yoke connection, Clamping range, max.: 1.5 mm <sup>2</sup> , Pitch: 3.81 mm, No. of poles: 10, 270°, Box
1940550000	BCZ 3.81/11/270F SN OR	PCB plug-in connector, Female connectors, Clamping yoke connection, Clamping range, max.: 1.5 mm <sup>2</sup> , Pitch: 3.81 mm, No. of poles: 11, 270°, Box
1940690000	BCZ 3.81/11/270F SN SW	PCB plug-in connector, Female connectors, Clamping yoke connection, Clamping range, max.: 1.5 mm <sup>2</sup> , Pitch: 3.81 mm, No. of poles: 11, 270°, Box

1940630000	BCZ 3.81/11/270F SN GN	PCB plug-in connector, Female connectors, Clamping yoke connection, Clamping range, max.: 1.5 mm <sup>2</sup> , Pitch: 3.81 mm, No. of poles: 11, 270°, Box
1940560000	BCZ 3.81/12/270F SN OR	PCB plug-in connector, Female connectors, Clamping yoke connection, Clamping range, max.: 1.5 mm <sup>2</sup> , Pitch: 3.81 mm, No. of poles: 12, 270°, Box
1799150000	BCZ 3.81/12/270F SN SW	PCB plug-in connector, Female connectors, Clamping yoke connection, Clamping range, max.: 1.5 mm <sup>2</sup> , Pitch: 3.81 mm, No. of poles: 12, 270°, Box
1799240000	BCZ 3.81/12/270F SN GN	PCB plug-in connector, Female connectors, Clamping yoke connection, Clamping range, max.: 1.5 mm <sup>2</sup> , Pitch: 3.81 mm, No. of poles: 12, 270°, Box
1940570000	BCZ 3.81/13/270F SN OR	PCB plug-in connector, Female connectors, Clamping yoke connection, Clamping range, max.: 1.5 mm <sup>2</sup> , Pitch: 3.81 mm, No. of poles: 13, 270°, Box
1940700000	BCZ 3.81/13/270F SN SW	PCB plug-in connector, Female connectors, Clamping yoke connection, Clamping range, max.: 1.5 mm <sup>2</sup> , Pitch: 3.81 mm, No. of poles: 13, 270°, Box
1940640000	BCZ 3.81/13/270F SN GN	PCB plug-in connector, Female connectors, Clamping yoke connection, Clamping range, max.: 1.5 mm <sup>2</sup> , Pitch: 3.81 mm, No. of poles: 13, 270°, Box
1940580000	BCZ 3.81/14/270F SN OR	PCB plug-in connector, Female connectors, Clamping yoke connection, Clamping range, max.: 1.5 mm <sup>2</sup> , Pitch: 3.81 mm, No. of poles: 14, 270°, Box
1940710000	BCZ 3.81/14/270F SN SW	PCB plug-in connector, Female connectors, Clamping yoke connection, Clamping range, max.: 1.5 mm <sup>2</sup> , Pitch: 3.81 mm, No. of poles: 14, 270°, Box
1940650000	BCZ 3.81/14/270F SN GN	PCB plug-in connector, Female connectors, Clamping yoke connection, Clamping range, max.: 1.5 mm <sup>2</sup> , Pitch: 3.81 mm, No. of poles: 14, 270°, Box
1940590000	BCZ 3.81/15/270F SN OR	PCB plug-in connector, Female connectors, Clamping yoke connection, Clamping range, max.: 1.5 mm <sup>2</sup> , Pitch: 3.81 mm, No. of poles: 15, 270°, Box
1940720000	BCZ 3.81/15/270F SN SW	PCB plug-in connector, Female connectors, Clamping yoke connection, Clamping range, max.: 1.5 mm <sup>2</sup> , Pitch: 3.81 mm, No. of poles: 15, 270°, Box
1940660000	BCZ 3.81/15/270F SN GN	PCB plug-in connector, Female connectors, Clamping yoke connection, Clamping range, max.: 1.5 mm <sup>2</sup> , Pitch: 3.81 mm, No. of poles: 15, 270°, Box
1940600000	BCZ 3.81/16/270F SN OR	PCB plug-in connector, Female connectors, Clamping yoke connection, Clamping range, max.: 1.5 mm <sup>2</sup> , Pitch: 3.81 mm, No. of poles: 16, 270°, Box
1799160000	BCZ 3.81/16/270F SN SW	PCB plug-in connector, Female connectors, Clamping yoke connection, Clamping range, max.: 1.5 mm <sup>2</sup> , Pitch: 3.81 mm, No. of poles: 16, 270°, Box
1799250000	BCZ 3.81/16/270F SN GN	PCB plug-in connector, Female connectors, Clamping yoke connection, Clamping range, max.: 1.5 mm <sup>2</sup> , Pitch: 3.81 mm, No. of poles: 16, 270°, Box