



Chipsmall Limited consists of a professional team with an average of over 10 year of expertise in the distribution of electronic components. Based in Hongkong, we have already established firm and mutual-benefit business relationships with customers from,Europe,America and south Asia,supplying obsolete and hard-to-find components to meet their specific needs.

With the principle of “Quality Parts,Customers Priority,Honest Operation,and Considerate Service”,our business mainly focus on the distribution of electronic components. Line cards we deal with include Microchip,ALPS,ROHM,Xilinx,Pulse,ON,Everlight and Freescale. Main products comprise IC,Modules,Potentiometer,IC Socket,Relay,Connector.Our parts cover such applications as commercial,industrial, and automotives areas.

We are looking forward to setting up business relationship with you and hope to provide you with the best service and solution. Let us make a better world for our industry!



## Contact us

Tel: +86-755-8981 8866 Fax: +86-755-8427 6832

Email & Skype: info@chipsmall.com Web: www.chipsmall.com

Address: A1208, Overseas Decoration Building, #122 Zhenhua RD., Futian, Shenzhen, China

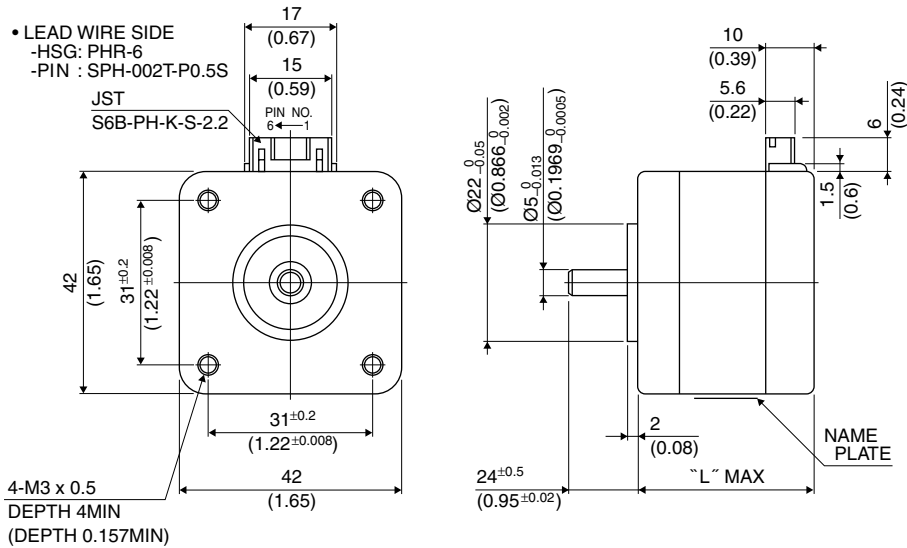


# 42□ 0.9°

# 17PY-Z

# 0.9°

## ■ 外觀図 Outline



Hybrid

結線表 PIN NO. vs. PHASE

相 (PHASE)	A	A COM	$\bar{A}$	B	B COM	$\bar{B}$
ピン番号 (PIN NO.)	4	5	6	3	2	1

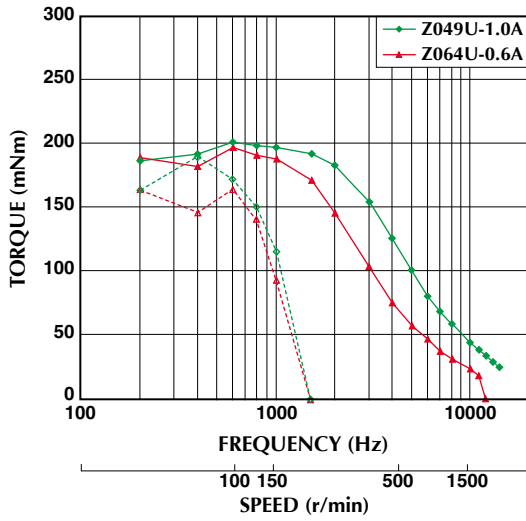
	"L"
17PY-Z7**	26 (1.02)
17PY-Z2**	30 (1.18)
17PY-Z0**	34 (1.34)
17PY-Z3**	38 (1.50)
17PY-Z1**	42 (1.65)
17PY-Z4**	48 (1.89)

## ■ 仕様 Specifications

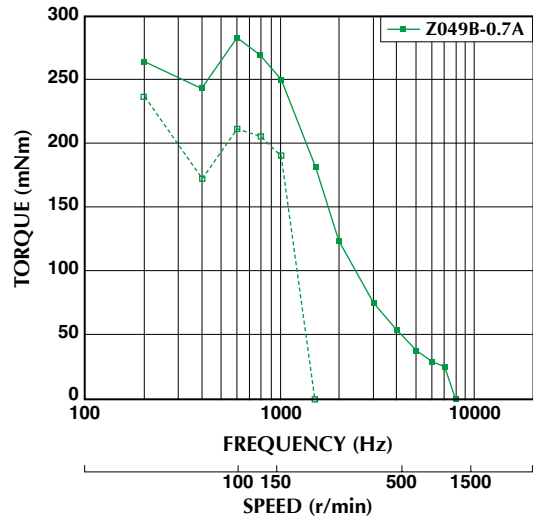
型式	ステップ角	ドライブ方式	定格電流	巻線抵抗	ホールディングトルク	インダクタンス	ロータイナーシャ	ディテントトルク	質量
Model	Step Angle	Drive Sequence	Rated Current	Resistance	Holding Torque	Inductance	Rotor Inertia	Detent Torque	Mass
	(deg)		(A)	(Ohms)	(mNm)	(mH)	(g·cm <sup>2</sup> )	(mNm)	(g)
17PY-Z049U	0.9	UNI-POLAR	1.0	3.1	220	4.4	37	11.0	200
17PY-Z064U	0.9	UNI-POLAR	0.6	8.3	220	11.1	37	11.0	200
17PY-Z142U	0.9	UNI-POLAR	1.4	2.3	300	4.7	62	11.8	300
17PY-Z149U	0.9	UNI-POLAR	1.0	4.3	300	8.7	62	11.8	300
17PY-Z249U	0.9	UNI-POLAR	0.8	2.7	120	3.8	24	4.4	180
17PY-Z264U	0.9	UNI-POLAR	0.6	6.9	120	9.7	24	4.4	180
17PY-Z342U	0.9	UNI-POLAR	1.4	2.0	280	3.5	50	12.0	250
17PY-Z349U	0.9	UNI-POLAR	1.0	3.6	280	6.5	50	12.0	250
17PY-Z442U	0.9	UNI-POLAR	1.4	2.8	450	4.5	75	18.7	350
17PY-Z449U	0.9	UNI-POLAR	1.0	4.9	450	8.4	75	18.7	350
17PY-Z749U	0.9	UNI-POLAR	0.9	2.2	48	1.9	11	3.0	150
17PY-Z764U	0.9	UNI-POLAR	0.6	5.6	48	4.9	11	3.0	150
17PY-Z049B	0.9	BI-POLAR	0.7	6.2	270	17.5	37	11.0	200
17PY-Z142B	0.9	BI-POLAR	1.0	4.6	390	18.6	62	11.8	300
17PY-Z249B	0.9	BI-POLAR	0.6	5.4	160	15.2	24	4.4	180
17PY-Z342B	0.9	BI-POLAR	0.9	4.0	340	13.8	50	12.0	250
17PY-Z442B	0.9	BI-POLAR	0.9	5.6	540	18.0	75	18.7	350
17PY-Z749B	0.9	BI-POLAR	0.6	4.4	63	7.8	11	3.0	150

## ■ トルク・スピード特性 Torque/Speed Characteristics

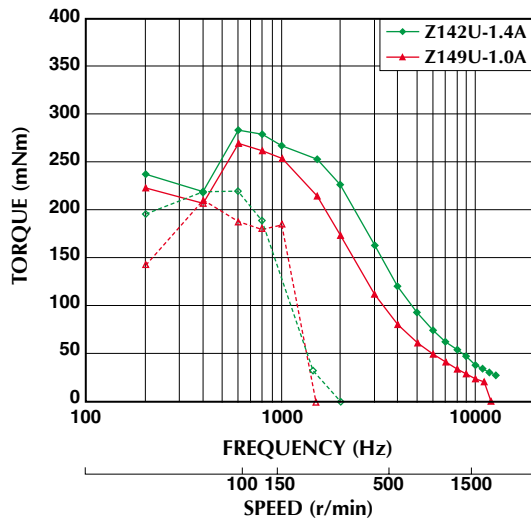
Model No: 17PY-Z049U,Z064U  
Driver: Chopper Dual  
Supply Voltage: 24.0 (Volt)



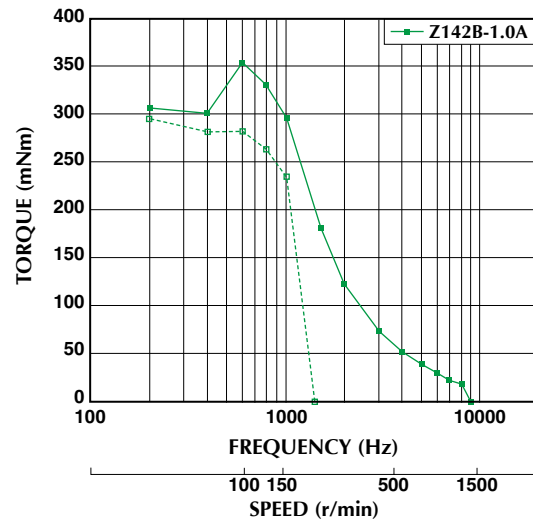
Model No: 17PY-Z049B  
Driver: Chopper Dual  
Supply Voltage: 24.0 (Volt)



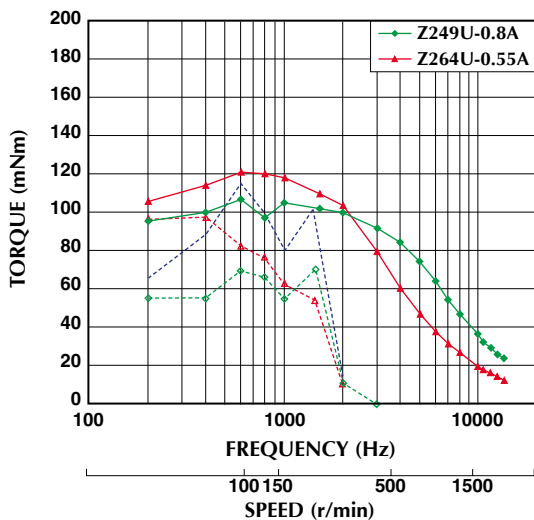
Model No: 17PY-Z142U,Z149U  
Driver: Chopper Dual  
Supply Voltage: 24.0 (Volt)



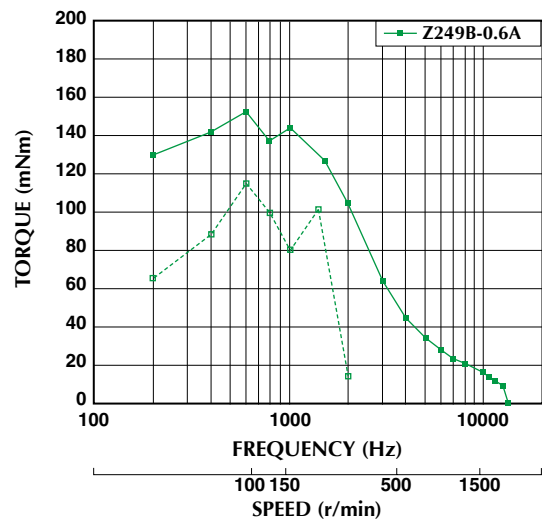
Model No: 17PY-Z142B  
Driver: Chopper Dual  
Supply Voltage: 24.0 (Volt)



Model No: 17PY-Z249U,Z264U  
Driver: Chopper Dual  
Supply Voltage: 24.0 (Volt)



Model No: 17PY-Z249B  
Driver: Chopper Dual  
Supply Voltage: 24.0 (Volt)



■ トルク特性は当社測定による参考データで、保証値ではありません。また、条件が変化すると、特性が変化する場合があります。  
■ Torque/Speed characteristics are for reference only and it may change when operated at different drive conditions.

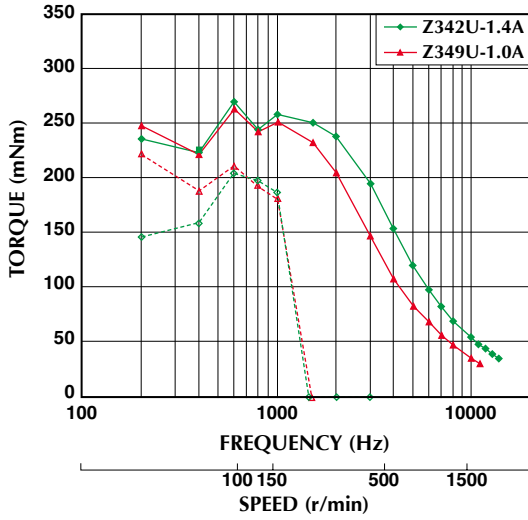
■ このカタログに掲載している製品の性能及び仕様は、改良の為予告なく変更することがありますのでご了承ください。  
■ Specifications are subject to change without notice.

— : PULL OUT  
- - - : PULL IN

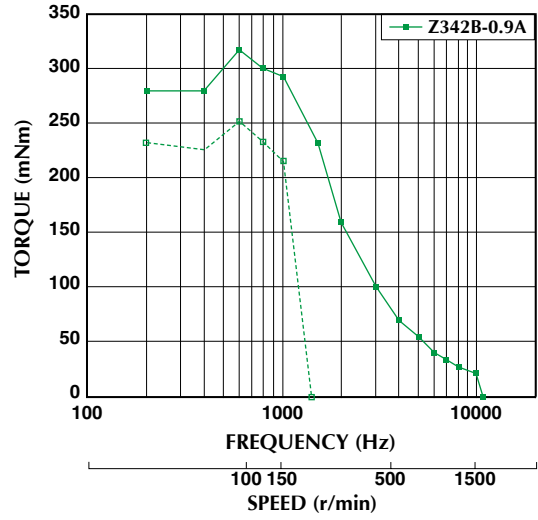


## ■ トルク・スピード特性 Torque/Speed Characteristics

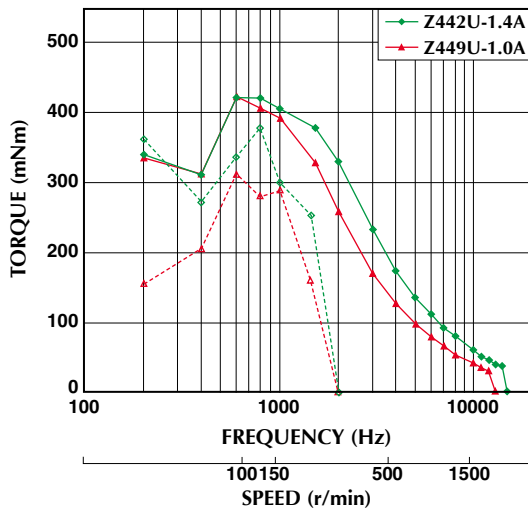
Model No: 17PY-Z342U,Z349U  
Driver: Chopper Dual  
Supply Voltage: 24.0 (Volt)



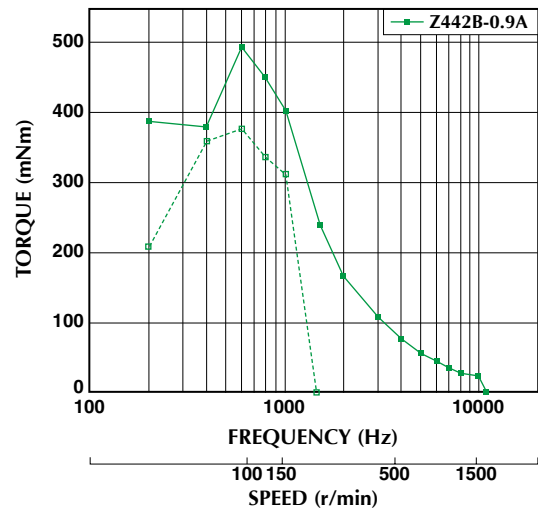
Model No: 17PY-Z342B  
Driver: Chopper Dual  
Supply Voltage: 24.0 (Volt)



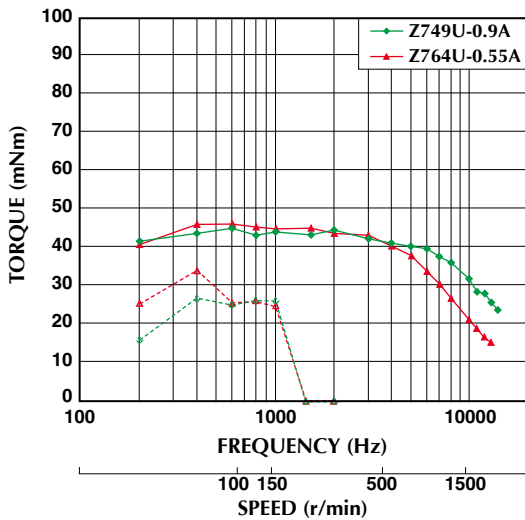
Model No: 17PY-Z442U,Z449U  
Driver: Chopper Dual  
Supply Voltage: 24.0 (Volt)



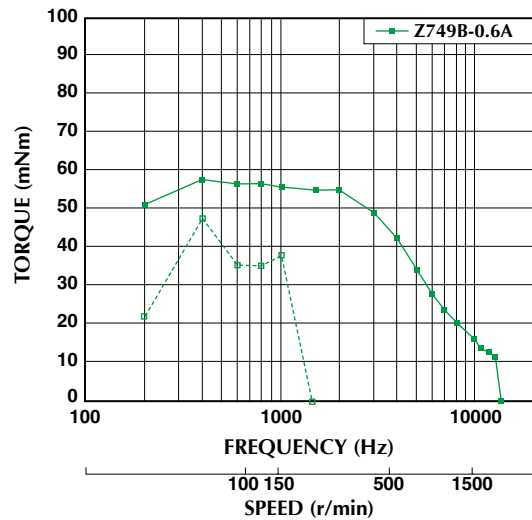
Model No: 17PY-Z442B  
Driver: Chopper Dual  
Supply Voltage: 24.0 (Volt)



Model No: 17PY-Z749U,Z764U  
Driver: Chopper Dual  
Supply Voltage: 24.0 (Volt)



Model No: 17PY-Z749B  
Driver: Chopper Dual  
Supply Voltage: 24.0 (Volt)



■ トルク特性は当社測定による参考データで、保証値ではありません。また、条件が変化すると、特性が変化する場合があります。  
■ Torque/Speed characteristics are for reference only and it may change when operated at different drive conditions.

■ このカタログに掲載している製品の性能及び仕様は、改良の為予告なく変更することがありますのでご了承ください。  
■ Specifications are subject to change without notice.

— : PULL OUT  
- - - : PULL IN