



Chipsmall Limited consists of a professional team with an average of over 10 year of expertise in the distribution of electronic components. Based in Hongkong, we have already established firm and mutual-benefit business relationships with customers from,Europe,America and south Asia,supplying obsolete and hard-to-find components to meet their specific needs.

With the principle of “Quality Parts,Customers Priority,Honest Operation,and Considerate Service”,our business mainly focus on the distribution of electronic components. Line cards we deal with include Microchip,ALPS,ROHM,Xilinx,Pulse,ON,Everlight and Freescale. Main products comprise IC,Modules,Potentiometer,IC Socket,Relay,Connector.Our parts cover such applications as commercial,industrial, and automotives areas.

We are looking forward to setting up business relationship with you and hope to provide you with the best service and solution. Let us make a better world for our industry!



Contact us

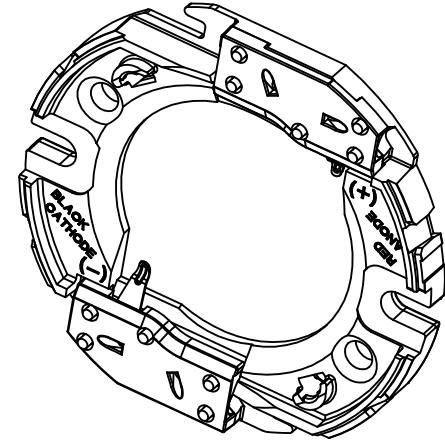
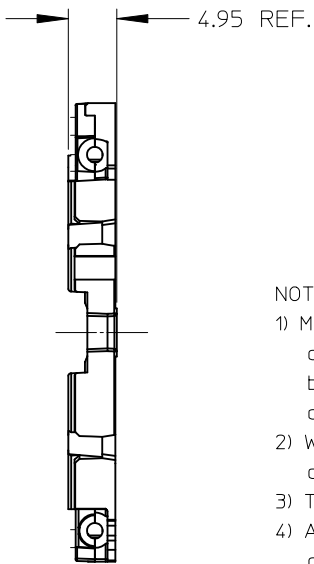
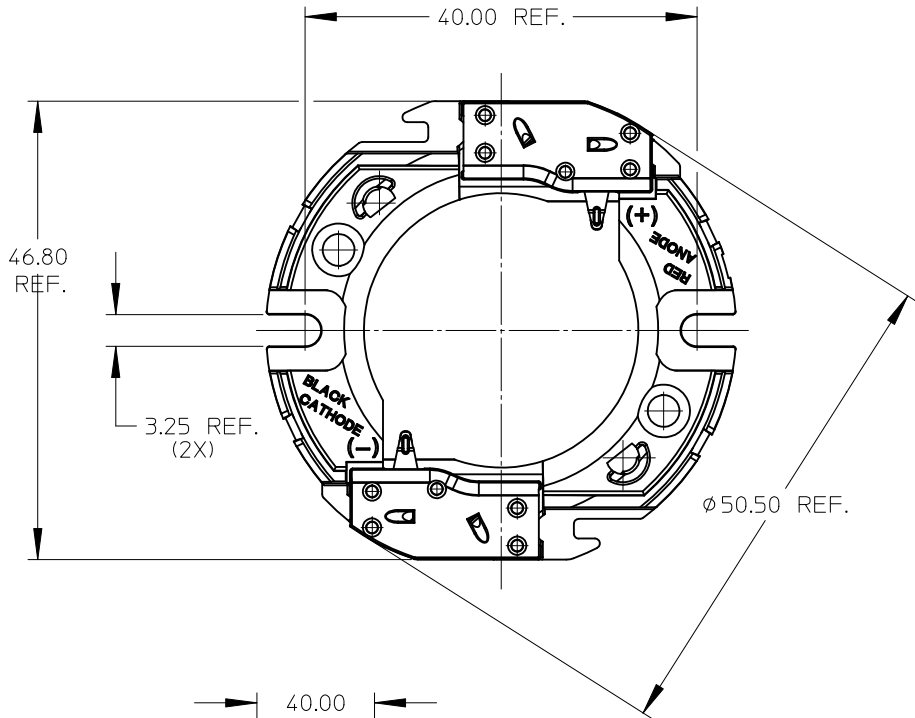
Tel: +86-755-8981 8866 Fax: +86-755-8427 6832

Email & Skype: info@chipsmall.com Web: www.chipsmall.com

Address: A1208, Overseas Decoration Building, #122 Zhenhua RD., Futian, Shenzhen, China

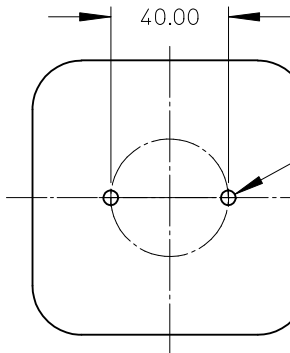


10	9	8	7	6	5	4	3	2	1
PART NUMBER	DESCRIPTION	SEE SHEET							
180190-0000	HOLDER WITHOUT LENS	3							
180190-0001	HOLDER WITH LENS	3							
180192-0000	COVER LENS ONLY	3							



NOTES:

- MATERIALS:
 - CAPS: NATURAL COLOR PA66 NYLON 25% GF UL94V-0
 - HOUSING: NATURAL COLOR PA66 NYLON 25% GF UL94V-0
 - COVER LENS: CLEAR POLYCARBONATE UL94HB
- WIRE TRAP TERMINALS: COPPER ALLOY
 - FINISH: GOLD OVER NICKEL
- THIS PRODUCT IS ELV AND ROHS COMPLIANT
- APPLICABLE WIRE GAUGE - 18 OR 20 AWG
 - SOLID WIRE IS RECOMMENDED
 - IF STRANDED WIRE IS USED, PRE-TINNED IS RECOMMENDED
 - 1 cm STRIP LENGTH IS RECOMMENDED
- MOUNT HOLDER USING M3 OR 4-40 SCREWS (2), 0.8 NEWTON METERS MAX TORQUE
- UL RECOGNIZED TO UL496
 - UL RECOGNIZED TO CSA-C22.2 NO. 43 (2008)
 - RATED 600V
 - UL FILE NUMBER: E345583, UL-OLFB2



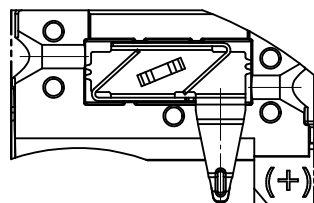
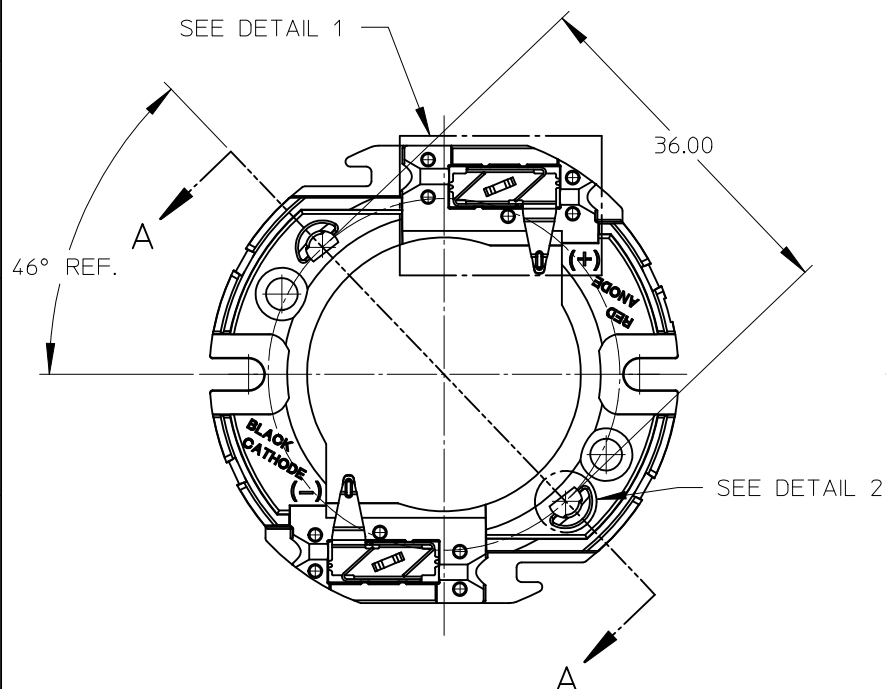
M3 OR 4-40 TAPPED HOLES (2)
TORQUE SCREWS 0.8
NEWTON METERS MAX

RECOMMENDED MOUNTING DIMENSIONS (NTS)

ENTER DESCRIPTION EC NO: SSL2012-0008 DRWN:FJAKL I C 2011/08/02 CHKD: APPR:DMCGOWAN 2011/08/05		DESCRIPTION	QUALITY SYMBOLS <div><div>F_A=0</div><div>F_B=0</div><div>F_C=0</div></div>	GENERAL TOLERANCES (UNLESS SPECIFIED)		DIMENSION STYLE MM ONLY		SCALE 2:1	DESIGN UNITS METRIC	THIRD ANGLE PROJECTION	
				<div><div>mm</div><div>INCH</div></div>	DRAWN BY FJAKL I C	DATE 2011/01/28	TITLE CITIZEN L-340 LED HOLDER				
4 PLACES ± --- ± ---	CHECKED BY	DATE									
3 PLACES ± --- ± ---	APPROVED BY	DATE	MOLEX MOLEX INCORPORATED								
2 PLACES ± 0.13 ± ---	DMCGOWAN	2011/02/18									
1 PLACE ± 0.25 ± ---	MATERIAL NO.	DOCUMENT NO.	SD-180190-001		SHEET NO.						
ANGULAR ±1/2°	SEE CHART				1 OF 3						
DRAFT WHERE APPLICABLE MUST REMAIN WITHIN DIMENSIONS	SIZE B	THIS DRAWING CONTAINS INFORMATION THAT IS PROPRIETARY TO MOLEX INCORPORATED AND SHOULD NOT BE USED WITHOUT WRITTEN PERMISSION									

10 9 8 7 6 5 4 3 2 1

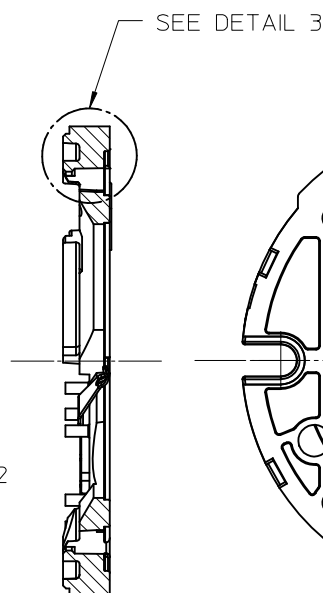
WIRE TRAP CAPS ARE REMOVED FROM FRONT VIEW FOR CLARITY



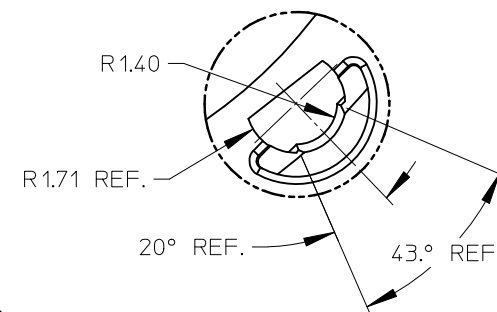
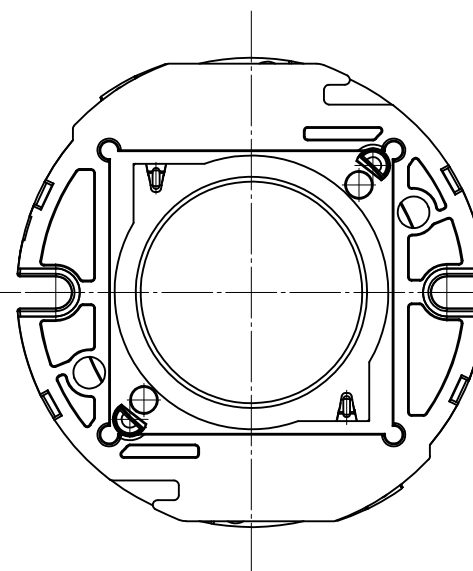
VIEW OF TWO-WAY WIRE TRAP

WIRE TRAPS WILL ACCOMODATE
EITHER 18 OR 20 GAUGE WIRE

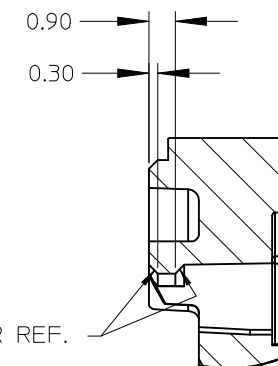
DETAIL 1 SCALE 3:1



SECTION A-A



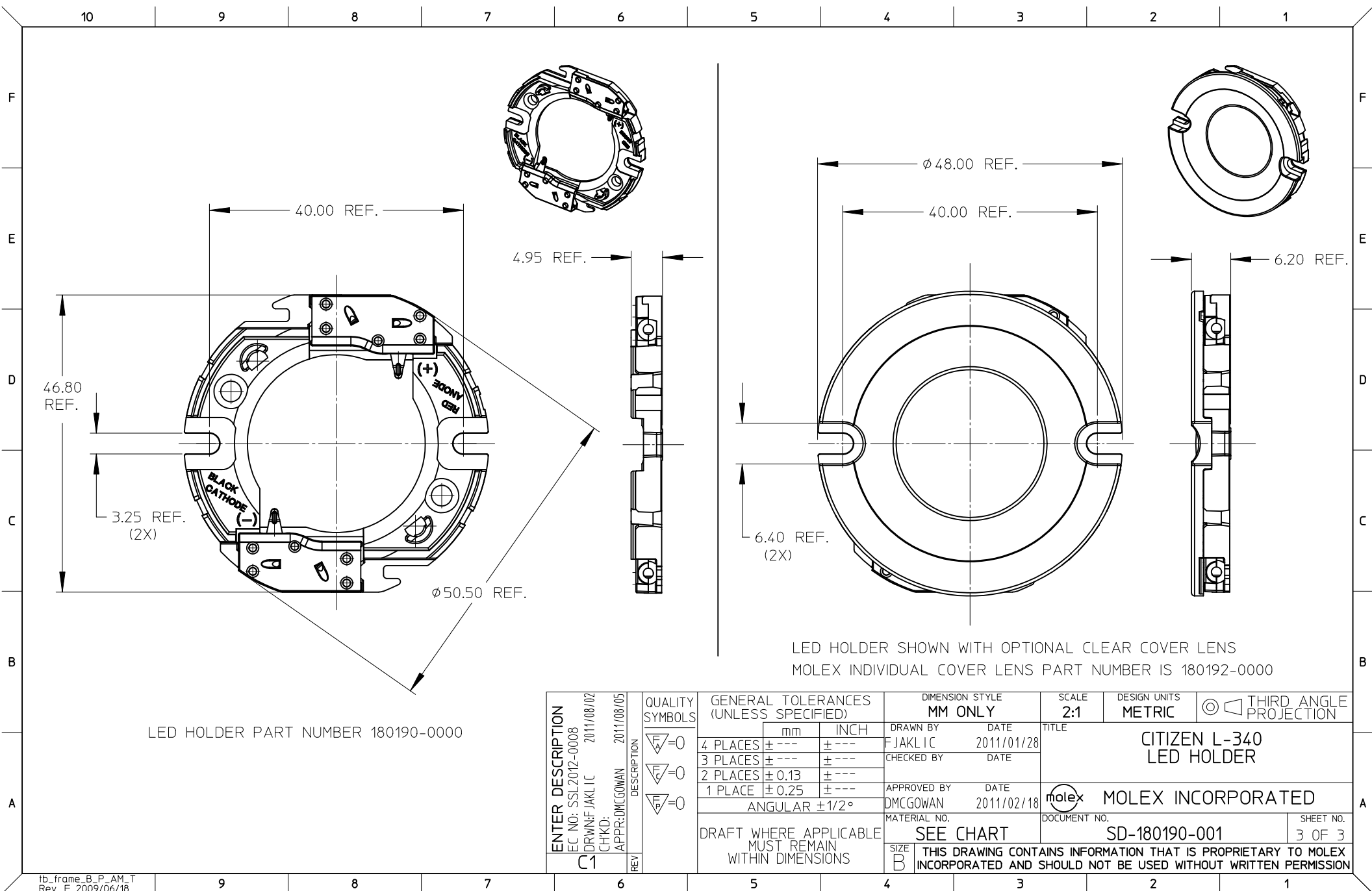
DETAIL 2 SCALE 6:1



LENS TO HOLDER SNAP FIT DETAIL






DETAIL 3 SCALE 6:1

ENTER DESCRIPTION EC NO: SSL2012-0008 CHKD: JAKLIC APPR: DMCGOWAN DATE: 2011/08/02		DESCRIPTION	QUALITY SYMBOLS ▽=0 ▽=0 ▽=0	GENERAL TOLERANCES (UNLESS SPECIFIED)		DIMENSION STYLE MM ONLY		SCALE 2:1	DESIGN UNITS METRIC	THIRD ANGLE PROJECTION			
					mm	INCH	DRAWN BY FJAKLIC	DATE 2011/01/28	TITLE CITIZEN L-340 LED HOLDER				
							CHECKED BY	DATE					
				4 PLACES	± ---	± ---	APPROVED BY DMCGOWAN	DATE 2011/02/18	MOLEX INCORPORATED				
				3 PLACES	± ---	± ---	MATERIAL NO.	DOCUMENT NO.					
2 PLACES	± 0.13	± ---	DRAFT WHERE APPLICABLE MUST REMAIN WITHIN DIMENSIONS		SEE CHART		SD-180190-001		2 OF 3				
1 PLACE	± 0.25	± ---			SIZE B		THIS DRAWING CONTAINS INFORMATION THAT IS PROPRIETARY TO MOLEX INCORPORATED AND SHOULD NOT BE USED WITHOUT WRITTEN PERMISSION						
			ANGULAR ±1/2°										



LED HOLDER PART NUMBER 180190-0000

LED HOLDER SHOWN WITH OPTIONAL CLEAR COVER LENS
MOLEX INDIVIDUAL COVER LENS PART NUMBER IS 180192-0000

ENTER DESCRIPTION EC NO: SSL2012-0008 DRAWN BY JAKL I C 2011/08/02 CHKD: JAKL I C APPR: DMCGOWAN 2011/08/05	QUALITY SYMBOLS <div>=0</div> <div>=0</div> <div>=0</div>	GENERAL TOLERANCES (UNLESS SPECIFIED)		DIMENSION STYLE MM ONLY		SCALE 2:1	DESIGN UNITS METRIC	 THIRD ANGLE PROJECTION	
				DRAWN BY DATE F JAKL I C 2011/01/28		TITLE CITIZEN L-340 LED HOLDER			
				CHECKED BY DATE					
				APPROVED BY DATE DMCGOWAN 2011/02/18		 MOLEX INCORPORATED			
				MATERIAL NO.					DOCUMENT NO.
C1	REV	DRAFT WHERE APPLICABLE MUST REMAIN WITHIN DIMENSIONS		SIZE B		SD-180190-001			
						THIS DRAWING CONTAINS INFORMATION THAT IS PROPRIETARY TO MOLEX INCORPORATED AND SHOULD NOT BE USED WITHOUT WRITTEN PERMISSION			