



Chipsmall Limited consists of a professional team with an average of over 10 year of expertise in the distribution of electronic components. Based in Hongkong, we have already established firm and mutual-benefit business relationships with customers from,Europe,America and south Asia,supplying obsolete and hard-to-find components to meet their specific needs.

With the principle of "Quality Parts,Customers Priority,Honest Operation,and Considerate Service",our business mainly focus on the distribution of electronic components. Line cards we deal with include Microchip,ALPS,ROHM,Xilinx,Pulse,ON,Everlight and Freescale. Main products comprise IC,Modules,Potentiometer,IC Socket,Relay,Connector.Our parts cover such applications as commercial,industrial, and automotives areas.

We are looking forward to setting up business relationship with you and hope to provide you with the best service and solution. Let us make a better world for our industry!



Contact us

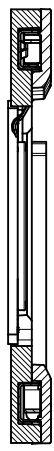
Tel: +86-755-8981 8866 Fax: +86-755-8427 6832

Email & Skype: info@chipsmall.com Web: www.chipsmall.com

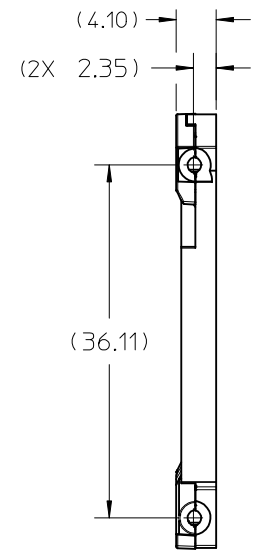
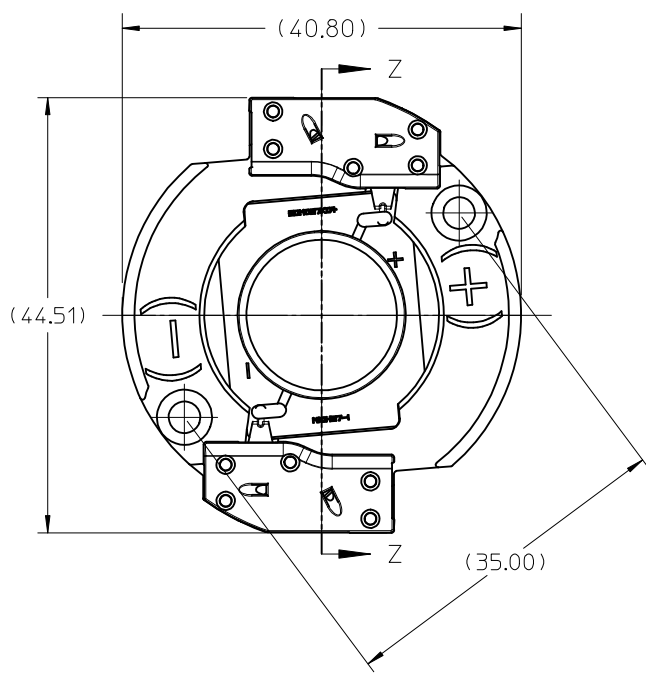
Address: A1208, Overseas Decoration Building, #122 Zhenhua RD., Futian, Shenzhen, China



| 10 | 9 | 8 | 7 | 6 | 5 | 4 | 3 | 2 | 1 |
|-------------|-----------------------------|---|-------------------------|---------|--------------------|---|---|---|---|
| PART NUMBER | DESCRIPTION | | MATERIAL | COLOR | AGENCY APPROVAL | | | | |
| 180330-0002 | LED HOLDER ASSEMBLY - NYLON | | POLYAMIDE, GLASS FILLED | NATURAL | UL496 FILE# 345583 | | | | |
| 180330-0102 | LED HOLDER ASSEMBLY - PBT | | POLYESTER, GLASS FILLED | WHITE | - | | | | |



SECTION Z-Z

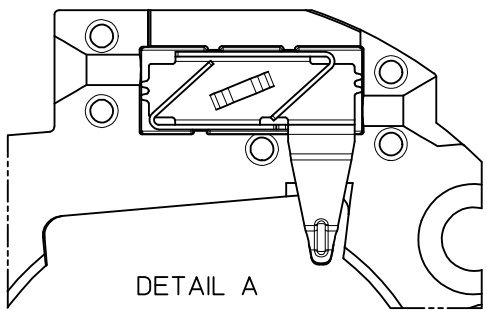
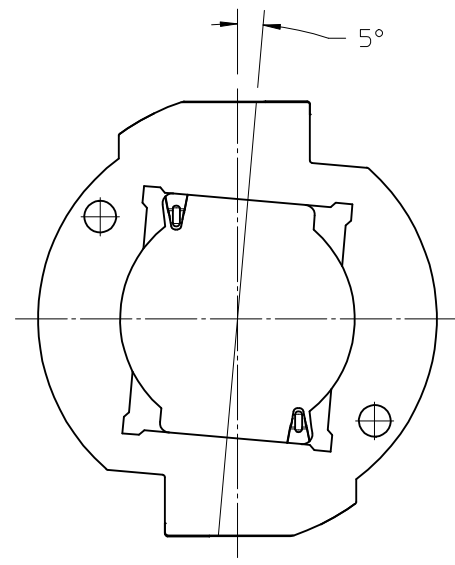
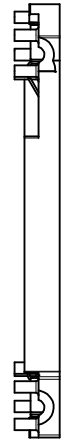
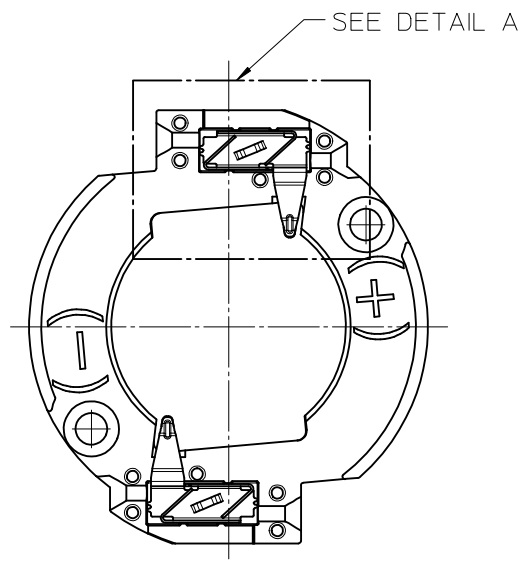


- NOTES:
- MATERIALS: HOUSING AND CAP: SEE CHART
TERMINAL: COPPER ALLOY;
 - FINISHES: LED CONTACT: GOLD OVER
NICKEL, WIRE TRAP: TIN OVER NICKEL
 - PRODUCT SPECIFICATION: PS-180330-002
 - PACKGING SPECIFICATION PK-180336-101
 - APPLICATION SPECIFICATION: AS-180328-001
 - APPLICABLE WIRE GAUGE - 18, 20, AND 22 AWG
 - TINNED SOLID WIRE IS PREFERRED
 - FOR STRANDED WIRE, PRE-TINNED IS RECOMMENDED
 - 10 mm +2/-0 mm STRIP LENGTH IS RECOMMENDED
 - MOUNT HOLDER USING M3 OR 4-40 SCREWS (2), SEE SHEET 3 FOR TORQUE SPECIFICATION.
 - THIS PRODUCT IS ELV AND ROHS COMPLIANT
 - ALL DIMENSIONS IN PARENTHESIS (XX.XX) ARE FOR REFERENCE ONLY

| | | | | | | |
|---|-----------------------|---------------------------------------|---|----------------|---------------|------------------------|
| ENTER DESCRIPTION EC NO: SSL2017-0012 DRAWN: ZAB.JANOVSKI 2016/08/16 CHKD: APPR: GMEYER 2016/09/21 REV | QUALITY SYMBOLS | GENERAL TOLERANCES (UNLESS SPECIFIED) | DIMENSION STYLE | SCALE | DESIGN UNITS | THIRD ANGLE PROJECTION |
| | $\nabla F/0$ | mm INCH | MM ONLY | 2:1 | METRIC | |
| | $\nabla F/0$ | 4 PLACES ± --- ± --- | DRAWN BY DATE | TITLE | | |
| | $\nabla F/0$ | 3 PLACES ± --- ± --- | MDEVITO 2012/02/03 | COB LED HOLDER | | |
| | 2 PLACES ± 0.13 ± --- | CHECKED BY DATE | 24.0MM X 20.0MM | | | |
| | 1 PLACE ± 0.25 ± --- | MCOLE 2014/03/05 | RECTANGULAR COB | | | |
| | ANGULAR ± 1/2° | APPROVED BY DATE | MOLEX INCORPORATED | | | |
| | | DMCGOWAN 2012/02/07 | MATERIAL NO. DOCUMENT NO. SHEET NO. | | | |
| | | | SEE CHART | | SD-180330-002 | 1 OF 3 |
| | | | THIS DRAWING CONTAINS INFORMATION THAT IS PROPRIETARY TO MOLEX INCORPORATED AND SHOULD NOT BE USED WITHOUT WRITTEN PERMISSION | | | |

10 9 8 7 6 5 4 3 2 1

WIRE TRAP CAPS ARE REMOVED FROM FRONT VIEW FOR CLARITY



DETAIL A
Scale 4:1

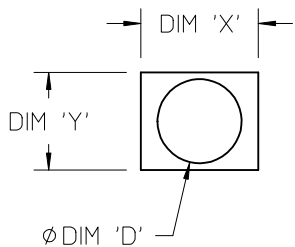
VIEW OF TWO-WAY WIRE TRAP

WIRE TRAPS WILL ACCOMMODATE
EITHER 18, 20, OR 22 GAUGE WIRE

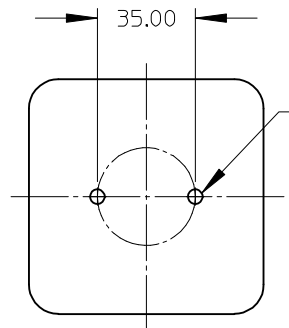
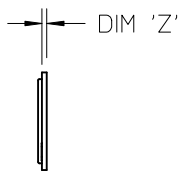
| | | | | | | | |
|--|--|---|--|---|---|----------------------------|--|
| ENTER DESCRIPTION EC NO: SSL2017-0012 DRWNLZABJANOVSKI 2016/08/16 CHKD: APPR:GMEYER 2016/09/21 E2 | QUALITY SYMBOLS $\nabla=0$ $\nabla=0$ $\nabla=0$ | GENERAL TOLERANCES (UNLESS SPECIFIED) mm INCH 4 PLACES \pm --- \pm --- 3 PLACES \pm --- \pm --- 2 PLACES \pm 0.13 \pm --- 1 PLACE \pm 0.25 \pm --- ANGULAR \pm 1/2° | DIMENSION STYLE MM ONLY DRAWN BY DATE MDEVITO 2012/02/03 CHECKED BY DATE MCOLE 2014/03/05 APPROVED BY DATE DMCGOWAN 2012/02/07 MATERIAL NO. | SCALE 2:1 DESIGN UNITS METRIC THIRD ANGLE PROJECTION | TITLE COB LED HOLDER 24.0MM X 20.0MM RECTANGULAR COB MOLEX INCORPORATED DOCUMENT NO. SD-180330-002 | SHEET NO. 2 OF 3 | |
| | DRAFT WHERE APPLICABLE MUST REMAIN WITHIN DIMENSIONS | | SEE CHART | THIS DRAWING CONTAINS INFORMATION THAT IS PROPRIETARY TO MOLEX INCORPORATED AND SHOULD NOT BE USED WITHOUT WRITTEN PERMISSION | | | |
| | | | | | | | |
| | | | | | | | |

9 8 7 6 5 4 3 2 1

| 10 | 9 | 8 | 7 | 6 | 5 | 4 | 3 | 2 | 1 |
|-----------|---------------|----------|----------|----------|----------|---|---|---|---|
| COB MFG. | TYPE | DIM. 'X' | DIM. 'Y' | DIM. 'Z' | DIM. 'D' | | | | |
| SHARP | MEGA ZENIGATA | 24.0 | 20.0 | 1.0 | 17.2 | | | | |
| LUMILEDS | LUXEON 1204 | 24.0 | 20.0 | 1.0 | 15.5 | | | | |
| LUMILEDS | LUXEON 1205 | 24.0 | 20.0 | 1.0 | 15.5 | | | | |
| LUMILEDS | LUXEON 1208 | 24.0 | 20.0 | 1.0 | 17.5 | | | | |
| EVERLIGHT | EAHP2024W** | 24.0 | 20.0 | 1.0 | 17.5 | | | | |



COB LED
SCALE 1:1



M3 OR 4-40 TAPPED HOLES (2)
TORQUE: CERAMIC 0.2 N-M MIN TO 0.4 N-M MAX
ALUMINUM 0.4 N-M MIN TO 0.8 N-M MAX

RECOMMENDED MOUNTING DIMENSIONS (NTS)

| | | | | | | |
|--|-------------------------------|--|--------------------|---|--------------|--|
| ENTER DESCRIPTION EC NO: SSL2017-0012 DRWNL: ZAB.JANOVSKI 2016/08/16 CHKD: APPR: GMEYER 2016/09/21 REV | QUALITY SYMBOLS | GENERAL TOLERANCES (UNLESS SPECIFIED) | DIMENSION STYLE | SCALE | DESIGN UNITS | THIRD ANGLE PROJECTION |
| | $\nabla = 0$ | mm INCH | MM ONLY | 1:1 | METRIC | |
| | $\nabla = 0$ | 4 PLACES \pm --- \pm --- | DRAWN BY DATE | | | TITLE |
| | $\nabla = 0$ | 3 PLACES \pm --- \pm --- | MDEVITO 2012/02/03 | | | COB LED HOLDER 24.0MM X 20.0MM RECTANGULAR COB |
| | 2 PLACES ± 0.13 \pm --- | CHECKED BY DATE | | | | |
| | 1 PLACE ± 0.25 \pm --- | MCOLE 2014/03/05 | | | | |
| | 0 PLACE \pm --- \pm --- | APPROVED BY DATE | | | | |
| | | DMCGOWAN 2012/02/07 | | | | |
| | | ANGULAR $\pm 1/2^\circ$ | MATERIAL NO. | DOCUMENT NO. | | SHEET NO. |
| | | DRAFT WHERE APPLICABLE MUST REMAIN WITHIN DIMENSIONS | SEE CHART | SD-180330-002 | | 3 OF 3 |
| | | | SIZE B | THIS DRAWING CONTAINS INFORMATION THAT IS PROPRIETARY TO MOLEX INCORPORATED AND SHOULD NOT BE USED WITHOUT WRITTEN PERMISSION | | |