



Chipsmall Limited consists of a professional team with an average of over 10 year of expertise in the distribution of electronic components. Based in Hongkong, we have already established firm and mutual-benefit business relationships with customers from,Europe,America and south Asia,supplying obsolete and hard-to-find components to meet their specific needs.

With the principle of "Quality Parts,Customers Priority,Honest Operation,and Considerate Service",our business mainly focus on the distribution of electronic components. Line cards we deal with include Microchip,ALPS,ROHM,Xilinx,Pulse,ON,Everlight and Freescale. Main products comprise IC,Modules,Potentiometer,IC Socket,Relay,Connector.Our parts cover such applications as commercial,industrial, and automotives areas.

We are looking forward to setting up business relationship with you and hope to provide you with the best service and solution. Let us make a better world for our industry!



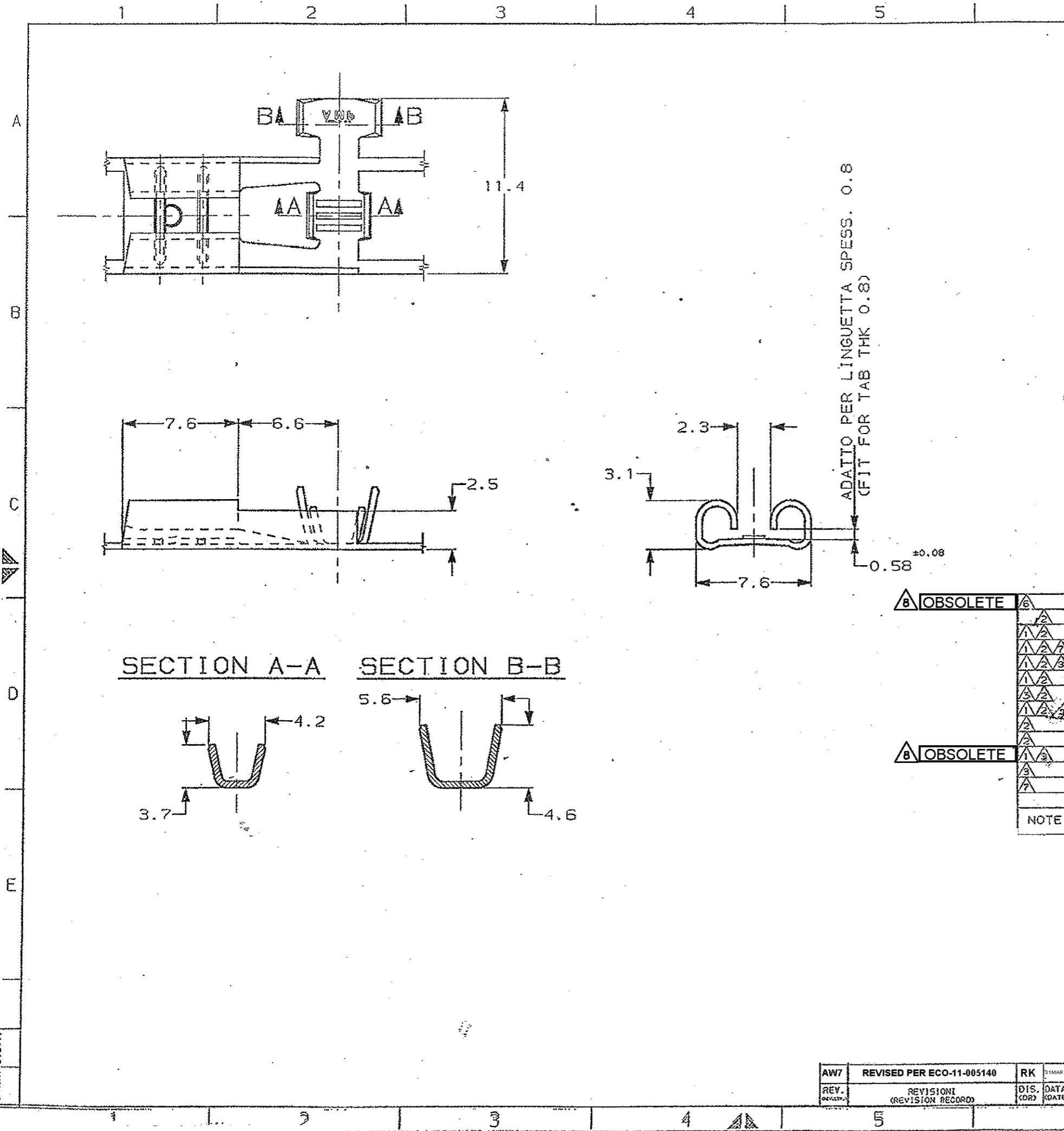
Contact us

Tel: +86-755-8981 8866 Fax: +86-755-8427 6832

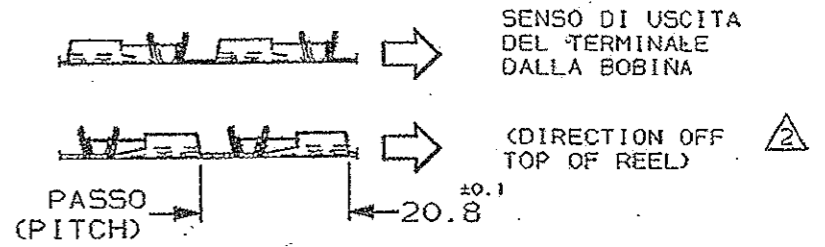
Email & Skype: info@chipsmall.com Web: www.chipsmall.com

Address: A1208, Overseas Decoration Building, #122 Zhenhua RD., Futian, Shenzhen, China





- ⚠ NON DISPONIBILE DALL' AMP ITALIA (NOT AVAILABLE FROM AMP ITALY)
- ⚠ ADATTO PER AMP-0-MATOR (REVERSE REELED FOR MINI APPLICATOR)
- ⚠ BOBINA IN CARTONE CON CARTA INTERPOSTA QUANTITA' PER BOBINA: 3000 (CARTON REEL WITH INTERPOSED PAPER STRIP Q.TY FOR REEL: 3000)
- ⚠ STATO DI FORNITURA SCALA 1:1 (SUPPLYING CONDITION SCALE 1:1)



- ⚠ SPECIFICA DI AGGRAFFATURA 114-20088. (APPLICATION SPEC. 114-20088).
- ⚠ BOBINA IN CARTONE CON CARTA INTERPOSTA QUANTITA' PER BOBINA: 2500 (CARTON REEL WITH INTERPOSED PAPER STRIP Q.TY FOR REEL: 2500)
- ⚠ BOBINATO CON CARTA INTERPOSTA (REELED WITH INTERLEAVE PAPER STRIP)
- ⚠ OBSOLETE PARTS: OBSOLETE CIS STREAMLINING PER D.RENAUD/D.SINISI

⚠ OBSOLETE	⚠	STAGNATO (TIN PLATED)	OTTONE (BRASS)	4-180464-1	AU
	⚠	NUDO (UNPLATED)	BR. F. (PH. BR.)	2-180464-4	AU
	⚠	NUDO (UNPLATED)	OTTONE (BRASS)	2-180464-1	AU
	⚠	STAGNATO (TIN PLATED)	OTTONE (BRASS)	1-180464-2	AW
	⚠	STAGNATO (TIN PLATED)	OTTONE (BRASS)	1-180464-1	O
	⚠	ARGENTATO (SILVER PLATED)	OTTONE (BRASS)	0-180464-9	AU
	⚠	STAGNATO (TIN PLATED)	BR. F. (PH. BR.)	0-180464-5	AU
	⚠	NUDO (UNPLATED)	BR. F. (PH. BR.)	0-180464-4	AU
	⚠	STAGNATO (TIN PLATED)	OTTONE (BRASS)	0-180464-2	AW
	⚠	NUDO (UNPLATED)	OTTONE (BRASS)	0-180464-1	AW
⚠ OBSOLETE	⚠	STAGNATO (TIN PLATED)	OTTONE (BRASS)	1-180397-2	AU
	⚠	STAGNATO (TIN PLATED)	BR. F. (PH. BR.)	0-180397-5	AU
	⚠	STAGNATO (TIN PLATED)	OTTONE (BRASS)	0-180397-2	AU
		NUDO (UNPLATED)	OTTONE (BRASS)	0-180397-1	AU
NOTE		FINITURA (FINISH)	MATERIALE (MATERIAL)	NUMERO (PART NUMBER)	REV

CUSTOMER DWG. FOR REFERENCE ONLY
 DISEGNO PER CLIENTE SOLO PER RIFERIMENTO

THIS DRAWING IS UNPUBLISHED
 RELEASE FOR PUBLICATION 13

TOLLERANZE, SE NON DIVERSAMENTE SPECIFICATO (TOLERANCES, UNLESS OTHERWISE SPECIFIED)	DIAM. ISOLANTE (INS. DIA. RANGE)	RANGO FILO (WIRE RANGE)	SCALA (SCALE)
± 0.3	2.4-3.8	1-2.5	4:1

ANGOLI (ANGLES) ± 2°

STE TE Connectivity

DIS. 28 APR 97 (DR.) A. FROLA
 CONT. 29 APR 97 (CHK) G. TURCO

DESCRIZIONE (DESCRIPTION) FASTON® Connector .250" sr. FLAG REC. CONTACT

AW7	REVISED PER ECO-11-005140	RK	APP. (APP.)	LOC. SIZE	NUMERO (CNSG NO)	REV.	FOLIO (SHEET)
REV. (REV.)	REVISIONI (REVISION RECORD)	DIS. (DR.)	DATA (DATE)	I A3	C-180397	AW7	1 OF 1

DISTRIBUZIONE (PRINT DIST.)